





# FINAL PLAT OF GRAYSTONE ESTATES, PHASE TWO A 56 LOT SUBDIVISION BEING A PORTION OF SECTION 16, TOWNSHIP 1 NORTH, RANGE 31 WEST, ESCAMBA COUNTY, FLORIDA JULY, 2019

**BUILDING SETBACK REQUIREMENTS:**  
FRONT YARD: 25 FEET  
SIDE YARD: 10% OF THE LOT WIDTH  
MINIMUM 5 FEET  
MAXIMUM 15 FEET  
REAR YARD: 25 FEET

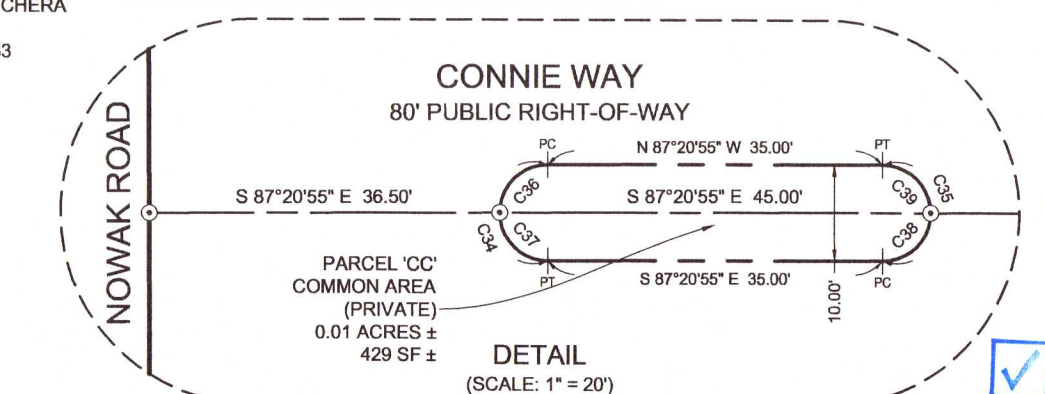
CENTERLINE LINE TABLE		
LINE No.	BEARING	LENGTH
L1	N 47°44'46" E	20.61'
L2	N 42°15'08" W	20.83'

LOT LINE TABLE		
LINE No.	BEARING	LENGTH
L3	N 72°12'50" E	20.00'
L4	N 31°39'08" E	20.00'

BOUNDARY CURVE TABLE				
CURVE No.	RADIUS	LENGTH	DELTA ANGLE	CHORD
C1	50.00'	73.51'	84°14'17"	67.07'
C2	25.00'	21.03'	48°11'23"	20.41'
C3	25.00'	39.27'	90°00'00"	35.36'
C4	25.00'	39.27'	90°00'00"	35.36'
C5	25.00'	39.27'	90°00'00"	35.36'
C6	25.00'	39.27'	90°00'00"	35.36'
C7	25.00'	21.01'	48°08'41"	20.39'
C8	50.00'	32.10'	36°47'04"	31.55'
C9	25.00'	39.27'	90°00'00"	35.36'
C10	25.00'	39.27'	90°00'00"	35.36'

CENTERLINE CURVE TABLE				
CURVE No.	RADIUS	LENGTH	DELTA ANGLE	CHORD
C11	50.00'	78.39'	89°49'58"	70.61'
C12	50.00'	78.69'	90°10'02"	70.81'
C13	50.00'	39.20'	44°54'59"	38.20'
C14	50.00'	39.20'	44°54'59"	38.20'
C15	50.00'	39.34'	45°05'01"	38.34'
C16	50.00'	39.34'	45°05'01"	38.34'

LOT CURVE TABLE				
CURVE No.	RADIUS	LENGTH	DELTA ANGLE	CHORD
C17	25.00'	39.27'	90°00'00"	35.36'
C18	25.00'	39.20'	89°49'58"	35.30'
C19	25.00'	39.34'	90°10'02"	35.41'
C20	25.00'	39.20'	89°49'58"	35.30'
C21	25.00'	39.34'	90°10'02"	35.41'
C22	25.00'	21.03'	48°11'23"	20.41'
C23	50.00'	162.79'	186°32'47"	99.84'
C24	50.00'	162.49'	186°12'17"	99.85'
C25	25.00'	21.03'	48°12'13"	20.42'
C26	25.00'	39.27'	90°00'00"	35.36'
C27	50.00'	15.26'	17°29'02"	15.20'
C28	50.00'	74.02'	84°49'29"	67.45'
C29	50.00'	35.10'	40°13'06"	34.38'
C30	50.00'	35.40'	40°33'41"	34.66'
C31	50.00'	59.90'	68°38'29"	56.38'
C32	25.00'	20.88'	47°23'09"	20.09'
C33	25.00'	0.36'	0°49'04"	0.36'
C34	5.00'	15.71'	180°00'00"	10.00'
C35	5.00'	15.71'	180°00'00"	10.00'
C36	5.00'	7.85'	90°00'00"	7.07'
C37	5.00'	7.85'	90°00'00"	7.07'
C38	5.00'	7.85'	90°00'00"	7.07'
C39	5.00'	7.85'	90°00'00"	7.07'



- LEGEND:**
- SET 4"x4" CONCRETE PRM (No. LB 7916)
  - SET PRM NAIL & DISK (No. LB 7916)
  - SET PCP NAIL & DISK (No. LB 7916)
  - FOUND 4"x4" CONCRETE PRM (No. LB 7916)
  - FOUND 6"x6" CONCRETE MONUMENT (UNNUMBERED)
  - FOUND 1/2" DIA CIR (No. LB 5487)
  - FOUND 1" IRON PIPE (UNNUMBERED)
  - NOTES LINE SHOWN NOT TO SCALE
  - NOTES SECTION NUMBER
  - NOTES DRAINAGE AND ACCESS EASEMENT
  - NOTES DRAINAGE EASEMENT
  - NOTES AND
  - ACOE
  - BSL
  - C1
  - CIR
  - DIA
  - DIA
  - DIA
  - ECUA
  - FT.
  - GPS
  - INC.
  - L1
  - LB
  - ±
  - NR
  - No.
  - O.R.
  - PG
  - PC
  - PI
  - PRC
  - PT
  - PCP
  - PRM
  - (P)
  - RP
  - SF
  - U/E
  - NOTES FEET
  - NOTES GLOBAL POSITIONING SYSTEM
  - NOTES INCORPORATED
  - NOTES LINE NUMBER (SEE LINE TABLE)
  - NOTES LICENSE BUSINESS
  - NOTES MORE OR LESS
  - NOTES NON-RADIAL
  - NOTES NUMBER
  - NOTES OFFICIAL RECORDS BOOK
  - NOTES PAGE
  - NOTES POINT OF CURVATURE
  - NOTES POINT OF INTERSECTION
  - NOTES POINT OF REVERSE CURVATURE
  - NOTES POINT OF TANGENCY
  - NOTES PERMANENT CONTROL POINT
  - NOTES PERMANENT REFERENCE MONUMENT
  - NOTES PLAT INFORMATION
  - NOTES RADIUS POINT
  - NOTES SQUARE FEET
  - NOTES UTILITY EASEMENT

DECLARATION OF RESTRICTIVE COVENANTS,  
OFFICIAL RECORDS BOOK: \_\_\_\_\_, PAGE(S): \_\_\_\_\_  
PLAT BOOK: \_\_\_\_\_, PAGE: \_\_\_\_\_

SHEET 2 OF 2 SHEETS