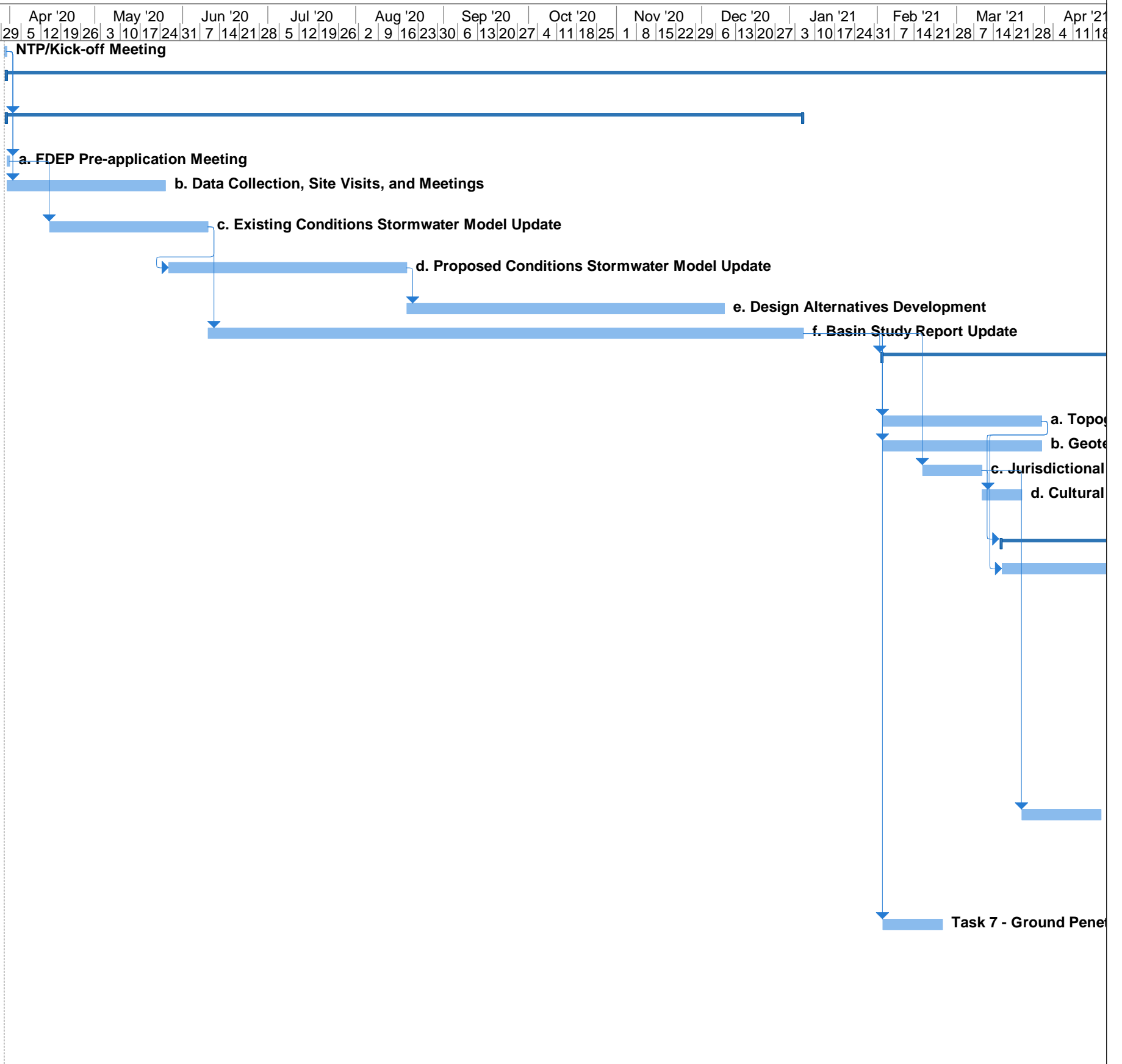


ID	Task Name	Duration	Start	Finish
1	NTP/Kick-off Meeting	1 day	Mon 3/30/20	Mon 3/30/20
2	Phase I - Basin Study Update and Velma Pond Outfall	951 days	Tue 3/31/20	Tue 11/21/23
3	Task 1 - Basin Study Engineering Assessment Update	201 days	Tue 3/31/20	Tue 1/5/21
4	a. FDEP Pre-application Meeting	1 day	Tue 3/31/20	Tue 3/31/20
5	b. Data Collection, Site Visits, and Meetings	40 days	Tue 3/31/20	Mon 5/25/20
6	c. Existing Conditions Stormwater Model Update	40 days	Wed 4/15/20	Tue 6/9/20
7	d. Proposed Conditions Stormwater Model Update	60 days	Wed 5/27/20	Tue 8/18/20
8	e. Design Alternatives Development	80 days	Wed 8/19/20	Tue 12/8/20
9	f. Basin Study Report Update	150 days	Wed 6/10/20	Tue 1/5/21
10	Task 2 - Engineering and Construction Plans (Velma Pond Outfall to Bayou Marcus)	410 days	Wed 2/3/21	Tue 8/30/22
11	a. Topographic Survey	40 days	Wed 2/3/21	Tue 3/30/21
12	b. Geotechnical Exploration	40 days	Wed 2/3/21	Tue 3/30/21
13	c. Jurisdictional Wetland Delineation	15 days	Wed 2/17/21	Tue 3/9/21
14	d. Cultural Resources Consultation	10 days	Wed 3/10/21	Tue 3/23/21
15	e. Structural Engineering	90 days	Wed 6/2/21	Tue 10/5/21
16	f. Construction Plans	145 days	Wed 3/17/21	Tue 10/5/21
17	30% Design and Plans	40 days	Wed 3/17/21	Tue 5/11/21
18	Escambia County 30% Review	15 days	Wed 5/12/21	Tue 6/1/21
19	60% Design and Plans	30 days	Wed 6/2/21	Tue 7/13/21
20	Escambia County 60% Review	15 days	Wed 7/14/21	Tue 8/3/21
21	90% Design and Plans	20 days	Wed 8/4/21	Tue 8/31/21
22	Escambia County 90% Review	15 days	Wed 9/1/21	Tue 9/21/21
23	100% Design and Plans	10 days	Wed 9/22/21	Tue 10/5/21
24	g. Utility Coordination	100 days	Wed 5/12/21	Tue 9/28/21
25	h. Permitting	260 days	Wed 9/1/21	Tue 8/30/22
26	Task 3 - Public Involvement Meeting	95 days	Wed 5/12/21	Tue 9/21/21
27	Task 4 - Phase I Archaeological Survey	20 days	Wed 3/24/21	Tue 4/20/21
28	Task 5 - Bid Support and Limited Construction Observation	300 days	Wed 8/31/22	Tue 10/24/23
29	Task 6 - As-built Certification and Project Close-out	20 days	Wed 10/25/23	Tue 11/21/23
30	Task 7 - Ground Penetrating Radar and Subsurface Utility Exploration	15 days	Wed 2/3/21	Tue 2/23/21
31	Task 8 - Easement Sketch and Descriptions	60 days	Wed 7/14/21	Tue 10/5/21
32	Phase II - Felton/Windham Pond Outfalls to Velma Pond	650 days	Wed 11/22/23	Tue 5/19/26
33	Phase III - Prospect Lane	260 days	Wed 5/20/26	Tue 5/18/27



ID	Task Name	Duration	Start	Finish	21 18/25	May '21 2 9 16/23/30	Jun '21 6 13/20/27	Jul '21 4 11/18/25	Aug '21 1 8 15/22/29	Sep '21 5 12/19/26	Oct '21 3 10/17/24/31	Nov '21 7 14/21/28	Dec '21 5 12/19/26	Jan '22 2 9 16/23/30	Feb '22 6 13/20/27	Mar '22 6 13/20/27	Apr '22 3 10/17/24	May '22 1 8 15/22/29	Jun 5 12	
1	NTP/Kick-off Meeting	1 day	Mon 3/30/20	Mon 3/30/20																
2	Phase I - Basin Study Update and Velma Pond Outfall	951 days	Tue 3/31/20	Tue 11/21/23																
3	Task 1 - Basin Study Engineering Assessment Update	201 days	Tue 3/31/20	Tue 1/5/21																
4	a. FDEP Pre-application Meeting	1 day	Tue 3/31/20	Tue 3/31/20																
5	b. Data Collection, Site Visits, and Meetings	40 days	Tue 3/31/20	Mon 5/25/20																
6	c. Existing Conditions Stormwater Model Update	40 days	Wed 4/15/20	Tue 6/9/20																
7	d. Proposed Conditions Stormwater Model Update	60 days	Wed 5/27/20	Tue 8/18/20																
8	e. Design Alternatives Development	80 days	Wed 8/19/20	Tue 12/8/20																
9	f. Basin Study Report Update	150 days	Wed 6/10/20	Tue 1/5/21																
10	Task 2 - Engineering and Construction Plans (Velma Pond Outfall to Bayou Marcus)	410 days	Wed 2/3/21	Tue 8/30/22																
11	a. Topographic Survey	40 days	Wed 2/3/21	Tue 3/30/21																
12	b. Geotechnical Exploration	40 days	Wed 2/3/21	Tue 3/30/21																
13	c. Jurisdictional Wetland Delineation	15 days	Wed 2/17/21	Tue 3/9/21																
14	d. Cultural Resources Consultation	10 days	Wed 3/10/21	Tue 3/23/21																
15	e. Structural Engineering	90 days	Wed 6/2/21	Tue 10/5/21																
16	f. Construction Plans	145 days	Wed 3/17/21	Tue 10/5/21																
17	30% Design and Plans	40 days	Wed 3/17/21	Tue 5/11/21																
18	Escambia County 30% Review	15 days	Wed 5/12/21	Tue 6/1/21																
19	60% Design and Plans	30 days	Wed 6/2/21	Tue 7/13/21																
20	Escambia County 60% Review	15 days	Wed 7/14/21	Tue 8/3/21																
21	90% Design and Plans	20 days	Wed 8/4/21	Tue 8/31/21																
22	Escambia County 90% Review	15 days	Wed 9/1/21	Tue 9/21/21																
23	100% Design and Plans	10 days	Wed 9/22/21	Tue 10/5/21																
24	g. Utility Coordination	100 days	Wed 5/12/21	Tue 9/28/21																
25	h. Permitting	260 days	Wed 9/1/21	Tue 8/30/22																
26	Task 3 - Public Involvement Meeting	95 days	Wed 5/12/21	Tue 9/21/21																
27	Task 4 - Phase I Archaeological Survey	20 days	Wed 3/24/21	Tue 4/20/21																
28	Task 5 - Bid Support and Limited Construction Observation	300 days	Wed 8/31/22	Tue 10/24/23																
29	Task 6 - As-built Certification and Project Close-out	20 days	Wed 10/25/23	Tue 11/21/23																
30	Task 7 - Ground Penetrating Radar and Subsurface Utility Exploration	15 days	Wed 2/3/21	Tue 2/23/21																
31	Task 8 - Easement Sketch and Descriptions	60 days	Wed 7/14/21	Tue 10/5/21																
32	Phase II - Felton/Windham Pond Outfalls to Velma Pond	650 days	Wed 11/22/23	Tue 5/19/26																
33	Phase III - Prospect Lane	260 days	Wed 5/20/26	Tue 5/18/27																

