



Board of County Commissioners • Escambia County, Florida

Robert M. McCracken P.E.  
Construction Management  
Division Manager  
Engineering Department

**FOR IMMEDIATE RELEASE**  
**ESCAMBIA COUNTY TRAFFIC ADVISORY**

PROJECT: COUNTY ROAD 164 WIDENING IMPROVEMENTS  
LOCATION: CR 164 BETWEEN HWY 97 TO EAST OF PINE BARREN ROAD

DATES: MONDAY AUGUST 19 – SATURDAY AUGUST 24, 2024

Phase A

Panhandle Grading and Paving crews will begin the widening of CR164 between Highway 97 and Green Village Road. This portion of the road will be closed to thru traffic. Local motorists and school bus traffic will be able to access CR164. All thru traffic will detour from Hwy 97, East on Gobbler Rd to Green Village Road, South to CR164.

DATES: MONDAY AUGUST 26 – FRIDAY AUGUST 30, 2024

Phase B

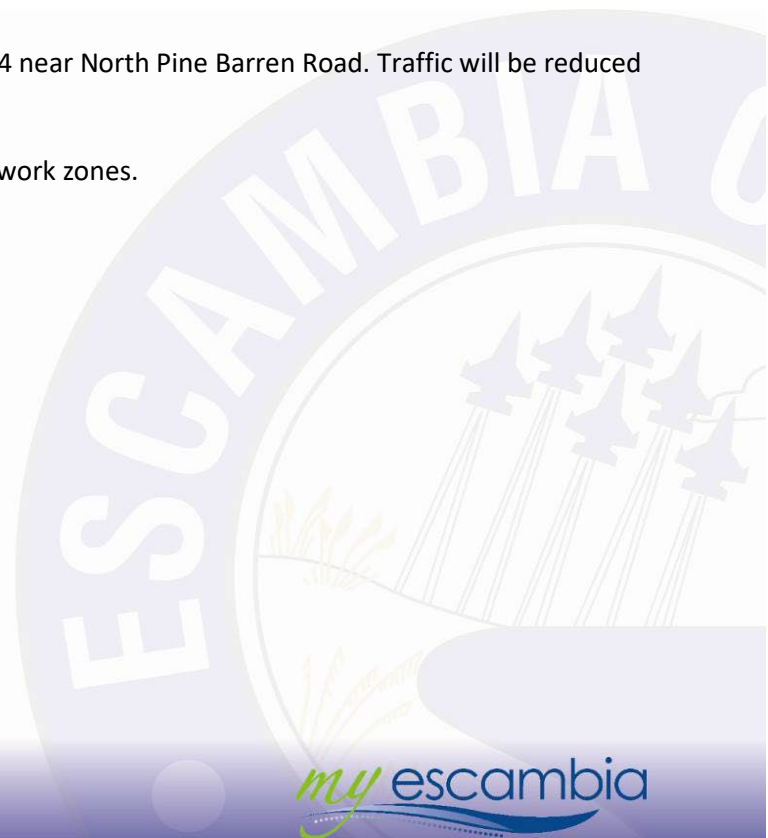
Crews will be widening CR164 from Green Village Road toward CR 99. CR164 will be open to Local Traffic Only. Thru traffic will be detoured North on Green Village Road, East on Gobbler Rd then South on CR99 to CR164.

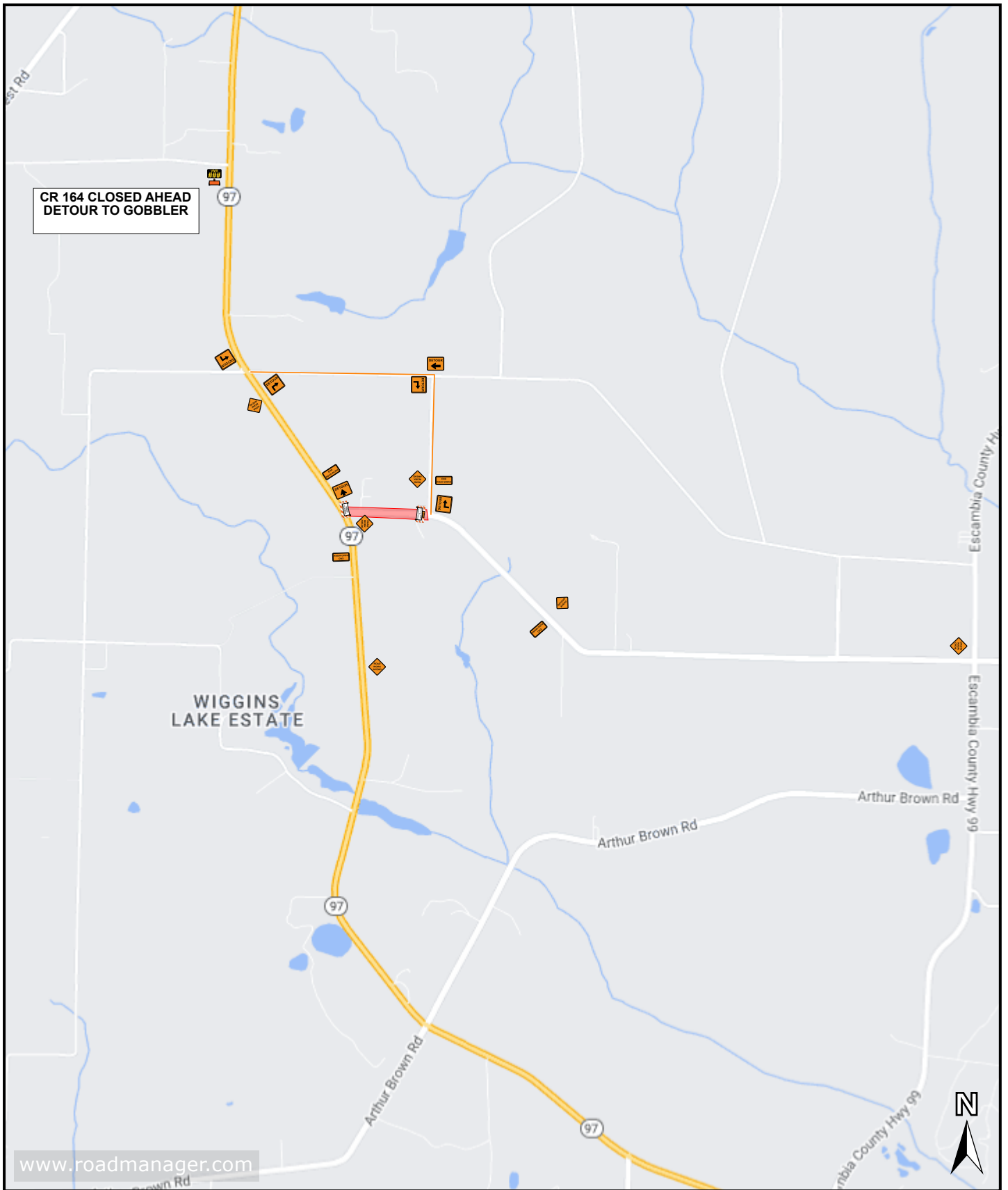
DATES: TUESDAY SEPTEMBER 3 – SEPTEMBER 20, 2024

Phase C North Pine Barren Road

Panhandle Grading and Paving crews will be widening CR164 near North Pine Barren Road. Traffic will be reduced to a single lane controlled by a flagging operation.

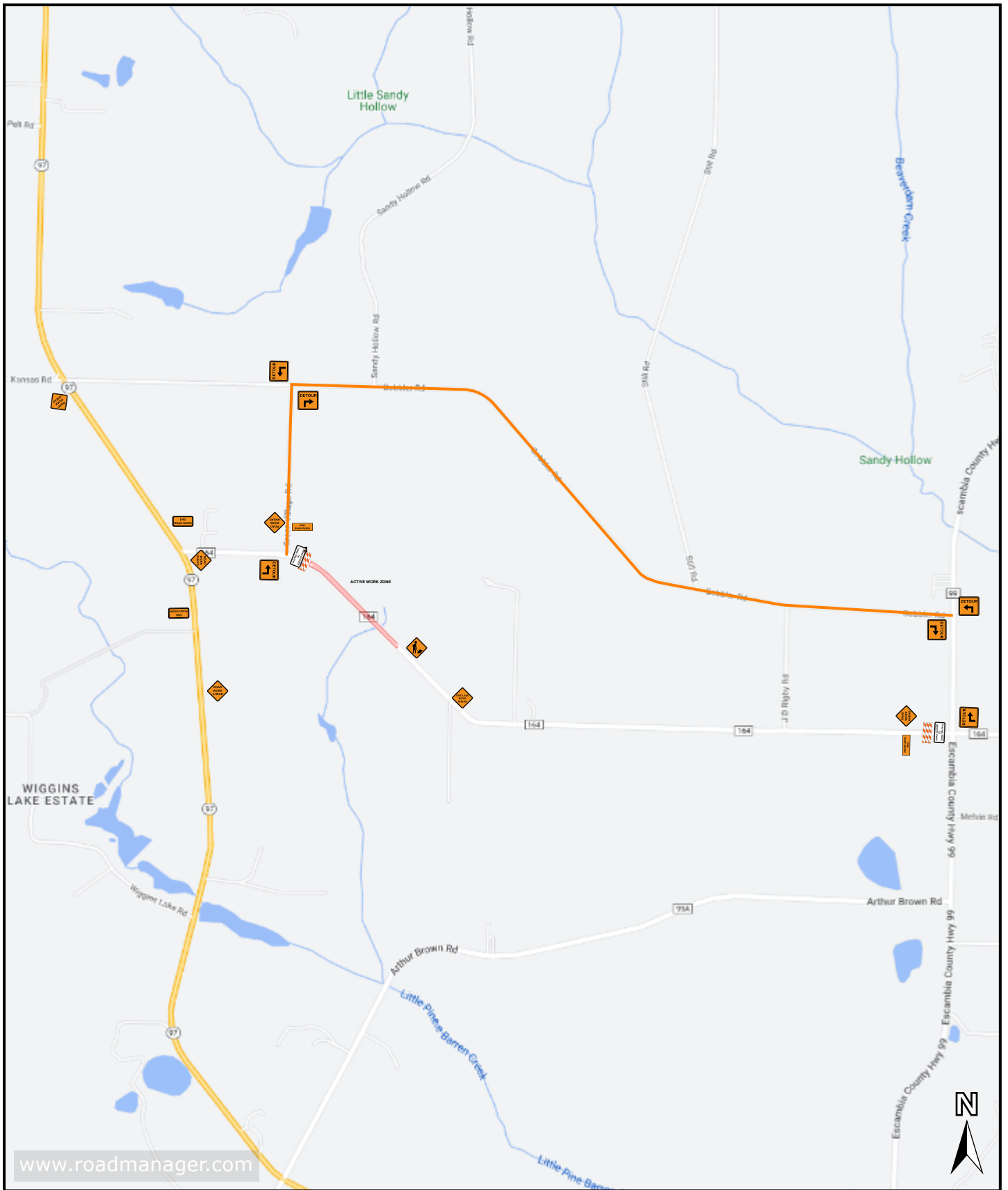
Motorists are urged to use caution when traveling through work zones.





<b>Plan #:</b> 00	<b>Location:</b> CR 164_DETOUTR PHASE A	<b>Title:</b> CR 164 DETOUR ROUTE A
----------------------	--	--

<b>Notes:</b> Road closed only when active construction crews are widening the road. Local traffic is allowed. When work operations are completed for the day, a;; road closure and temporary detour signs will be taken down.				<b>On-Site Contact:</b>		
<b>Posted Speed:</b> 35 MPH		<b>Reduced Speed:</b>	<b>Revision:</b>	<b>Signature:</b>	<b>Date and Time of Project:</b>	



<b>Plan #:</b> 01	<b>Location:</b> Escambia County	<b>Title:</b> CR 164 Detour Route Phase B
----------------------	-------------------------------------	--

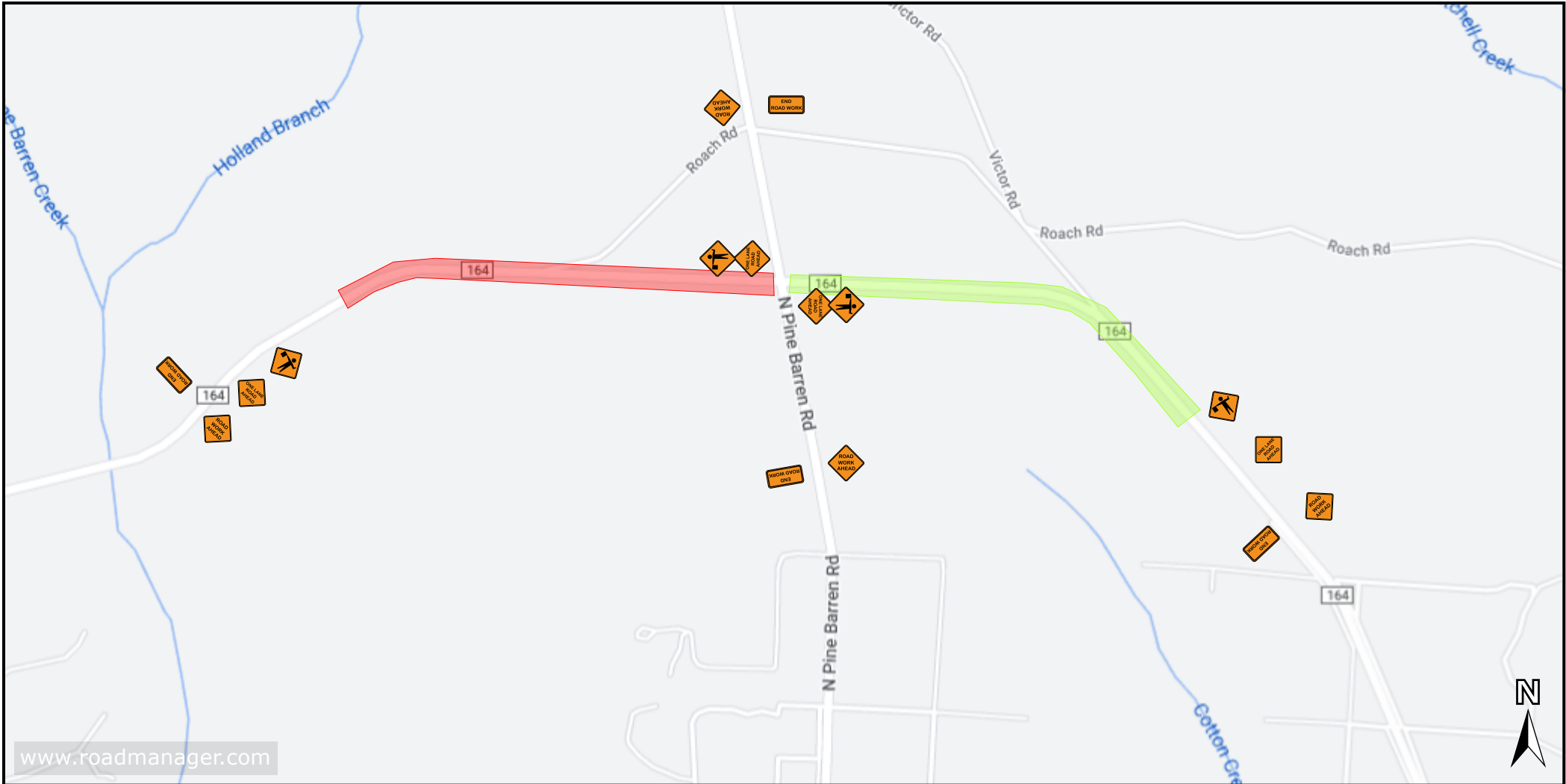
**Notes:**  
Road Closed only when active construction crews are widening the road. Local traffic is allowed. When work operations are completed for the day, all road closure barricades and temporary detour signs will be taken down.

<b>On-Site Contact:</b>	
<b>Site Induction:</b>	<b>Date Drawn:</b>
<b>License #:</b>	<b>Drawn By:</b> Mike Long

0 500 1000 1500 2000ft  
Scale 1:31137

<b>Posted Speed:</b> 35 MPH	<b>Reduced Speed:</b>	<b>Revision:</b>	<b>Signature:</b>
--------------------------------	-----------------------	------------------	-------------------

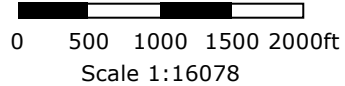
**Date and Time of Project:**



www.roadmanager.com

<b>Plan #:</b> 02	<b>Location:</b> CR 164 @ North Pine Barren Road	<b>Title:</b>
----------------------	---	---------------

<b>Notes:</b> RWA and END CONST signs will be post mounted. All other signs will be temporary stand mount signs and will be taken down at the end of each days production.	<b>On-Site Contact:</b>	
	<b>Site Induction:</b>	<b>Date Drawn:</b>
	<b>License #:</b>	<b>Drawn By:</b> Mike Long



<b>Posted Speed:</b> 45 MPH	<b>Reduced Speed:</b>	<b>Revision:</b>	<b>Signature:</b>	<b>Date and Time of Project:</b>
--------------------------------	-----------------------	------------------	-------------------	----------------------------------