

LAPIT PD19-20.083

FIN#: 438908-3-58-01

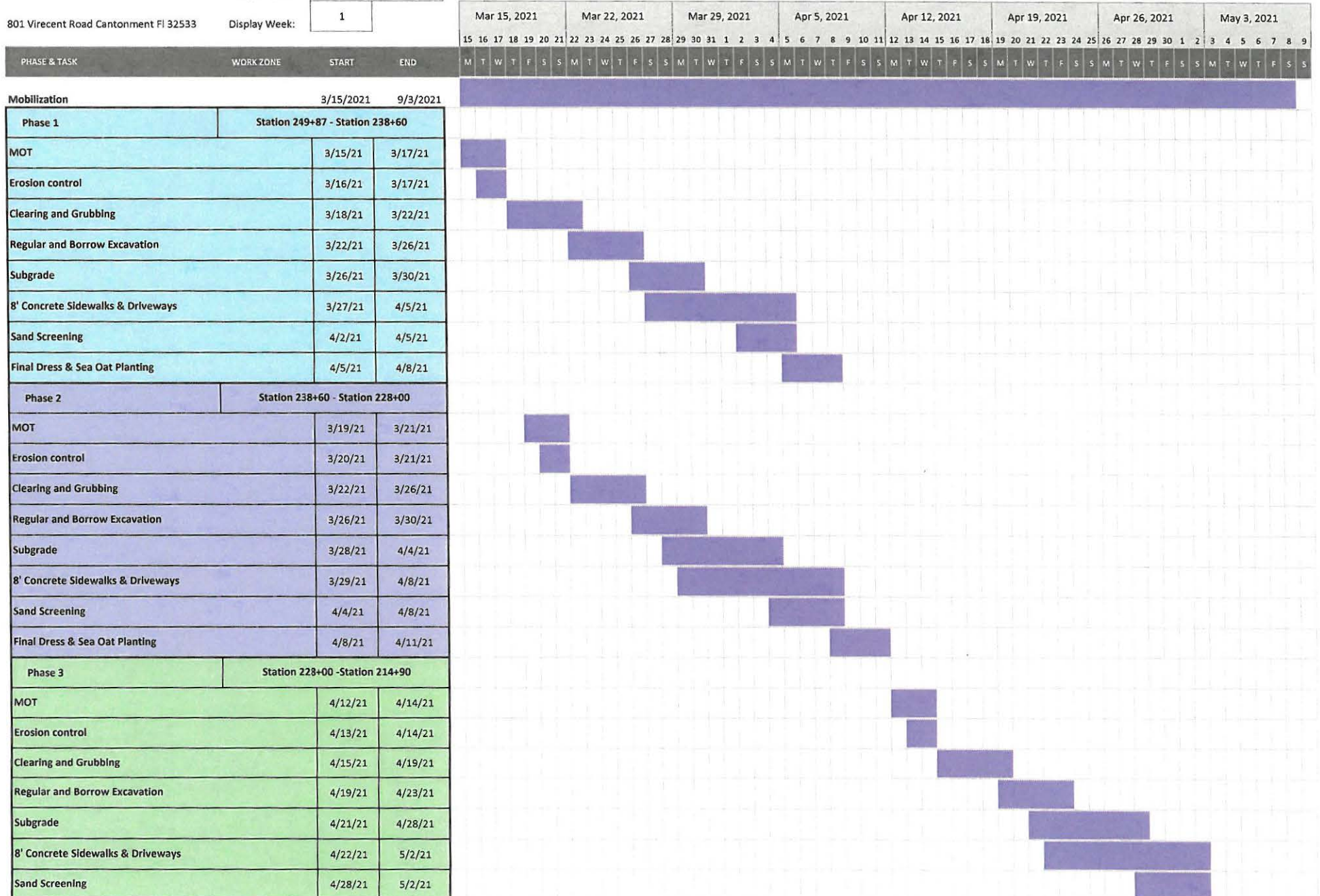
Chavers Constructin
Brett Moylan

FAP #: D320-087-B

Project Start:

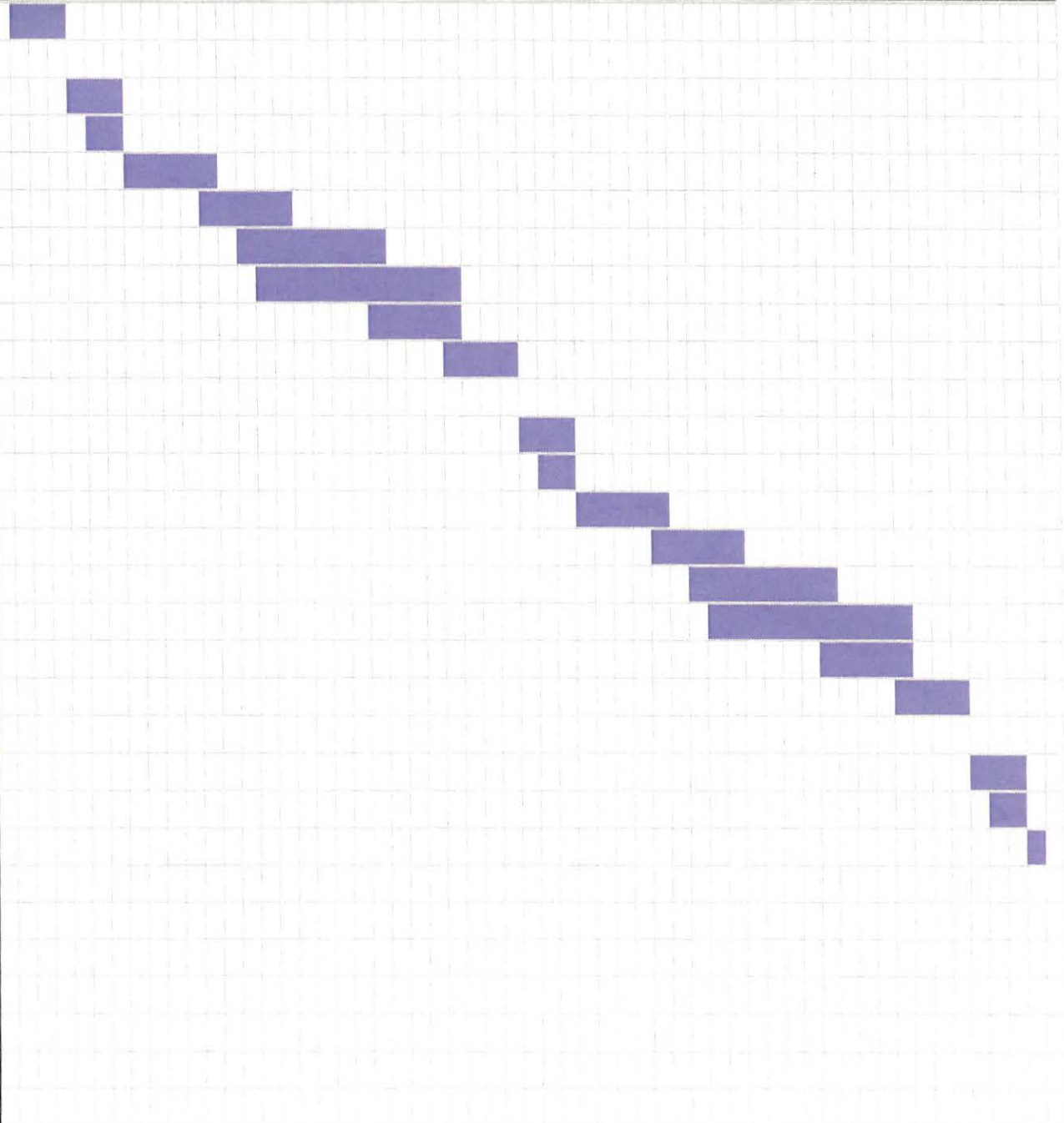
Display Week:

801 Virecent Road Cantonment Fl 32533



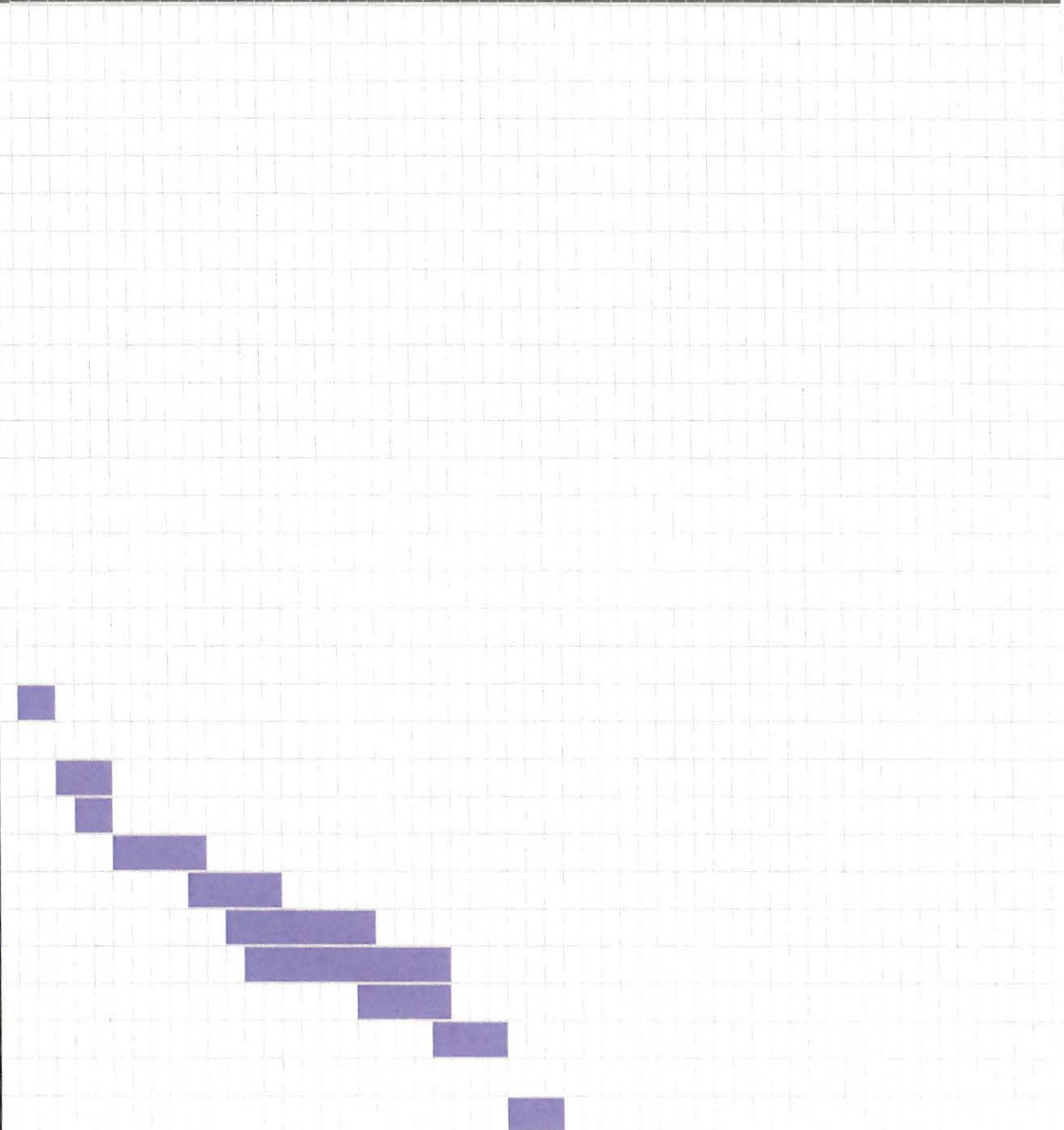
May 3, 2021			May 10, 2021			May 17, 2021			May 24, 2021			May 31, 2021			Jun 7, 2021			Jun 14, 2021			Jun 21, 2021																																		
3	4	5	6	7	8	9	10	11	12	13	14	15	16	17	18	19	20	21	22	23	24	25	26	27	28	29	30	31	1	2	3	4	5	6	7	8	9	10	11	12	13	14	15	16	17	18	19	20	21	22	23	24	25	26	27
M	T	W	T	F	S	S	M	T	W	T	F	S	S	M	T	W	T	F	S	S	M	T	W	T	F	S	S	M	T	W	T	F	S	S	M	T	W	T	F	S	S	M	T	W	T	F	S	S							

PHASE & TASK	WORK ZONE	START	END
Final Dress & Sea Oat Planting		5/2/21	5/5/21
Phase 4	Station 214+90 - Station 203+10		
MOT		5/6/21	5/8/21
Erosion control		5/7/21	5/8/21
Clearing and Grubbing		5/9/21	5/13/21
Regular and Borrow Excavation		5/13/21	5/17/21
Subgrade		5/15/21	5/22/21
8' Concrete Sidewalks & Driveways		5/16/21	5/26/21
Sand Screening		5/22/21	5/26/21
Final Dress & Sea Oat Planting		5/26/21	5/29/21
Phase 5	Station 203+10 - Station 191+20		
MOT		5/30/21	6/1/21
Erosion control		5/31/21	6/1/21
Clearing and Grubbing		6/2/21	6/6/21
Regular and Borrow Excavation		6/6/21	6/10/21
Subgrade		6/8/21	6/15/21
8' Concrete Sidewalks & Driveways		6/9/21	6/19/21
Sand Screening		6/15/21	6/19/21
Final Dress & Sea Oat Planting		6/19/21	6/22/21
Phase 6	Station 191+20 - Station 178+65		
MOT		6/23/21	6/25/21
Erosion control		6/24/21	6/25/21
Clearing and Grubbing		6/26/21	6/30/21
Regular and Borrow Excavation		6/30/21	7/4/21
Subgrade		7/2/21	7/9/21
8' Concrete Sidewalks & Driveways		7/3/21	7/13/21
Sand Screening		7/9/21	7/13/21
Final Dress & Sea Oat Planting		7/13/21	7/16/21
Phase 7	Station 178+65 - Station 159+00		
MOT		7/17/21	7/19/21



Jun 21, 2021					Jun 28, 2021					Jul 5, 2021					Jul 12, 2021					Jul 19, 2021					Jul 26, 2021					Aug 2, 2021					Aug 9, 2021																											
21	22	23	24	25	26	27	28	29	30	1	2	3	4	5	6	7	8	9	10	11	12	13	14	15	16	17	18	19	20	21	22	23	24	25	26	27	28	29	30	31	1	2	3	4	5	6	7	8	9	10	11	12	13	14	15							
M	T	W	T	F	S	S	M	T	W	T	F	S	S	M	T	W	T	F	S	S	M	T	W	T	F	S	S	M	T	W	T	F	S	S	M	T	W	T	F	S	S	M	T	W	T	F	S	S	M	T	W	T	F	S	S	M	T	W	T	F	S	S

PHASE & TASK	WORK ZONE	START	END
Final Dress & Sea Oat Planting		5/2/21	5/5/21
Phase 4	Station 214+90 - Station 203+10		
MOT		5/6/21	5/8/21
Erosion control		5/7/21	5/8/21
Clearing and Grubbing		5/9/21	5/13/21
Regular and Borrow Excavation		5/13/21	5/17/21
Subgrade		5/15/21	5/22/21
8' Concrete Sidewalks & Driveways		5/16/21	5/26/21
Sand Screening		5/22/21	5/26/21
Final Dress & Sea Oat Planting		5/26/21	5/29/21
Phase 5	Station 203+10 - Station 191+20		
MOT		5/30/21	6/1/21
Erosion control		5/31/21	6/1/21
Clearing and Grubbing		6/2/21	6/6/21
Regular and Borrow Excavation		6/6/21	6/10/21
Subgrade		6/8/21	6/15/21
8' Concrete Sidewalks & Driveways		6/9/21	6/19/21
Sand Screening		6/15/21	6/19/21
Final Dress & Sea Oat Planting		6/19/21	6/22/21
Phase 6	Station 191+20 - Station 178+65		
MOT		6/23/21	6/25/21
Erosion control		6/24/21	6/25/21
Clearing and Grubbing		6/26/21	6/30/21
Regular and Borrow Excavation		6/30/21	7/4/21
Subgrade		7/2/21	7/9/21
8' Concrete Sidewalks & Driveways		7/3/21	7/13/21
Sand Screening		7/9/21	7/13/21
Final Dress & Sea Oat Planting		7/13/21	7/16/21
Phase 7	Station 178+65 - Station 159+00		
MOT		7/17/21	7/19/21



Jun 21, 2021					Jun 28, 2021					Jul 5, 2021					Jul 12, 2021					Jul 19, 2021					Jul 26, 2021					Aug 2, 2021					Aug 9, 2021																				
21	22	23	24	25	26	27	28	29	30	1	2	3	4	5	6	7	8	9	10	11	12	13	14	15	16	17	18	19	20	21	22	23	24	25	26	27	28	29	30	31	1	2	3	4	5	6	7	8	9	10	11	12	13	14	15
M	T	W	T	F	S	S	M	T	W	T	F	S	S	M	T	W	T	F	S	S	M	T	W	T	F	S	S	M	T	W	T	F	S	S	M	T	W	T	F	S	S	M	T	W	T	F	S	S	M	T	W	T	F	S	S

PHASE & TASK	WORK ZONE	START	END
Erosion control		7/18/21	7/19/21
Clearing and Grubbing		7/20/21	7/24/21
Regular and Borrow Excavation		7/24/21	7/28/21
Subgrade		7/26/21	8/2/21
8' Concrete Sidewalks & Driveways		7/27/21	7/6/21
Sand Screening		8/2/21	8/6/21
Final Dress & Sea Oat Planting		8/6/21	8/9/21
Phase 8	Station 159+00 - Station 146.04		
MOT		8/10/21	8/12/21
Erosion control		8/11/21	8/12/21
Clearing and Grubbing		8/13/21	8/17/21
Regular and Borrow Excavation		8/17/21	8/21/21
Subgrade		8/19/21	8/26/21
8' Concrete Sidewalks & Driveways		8/20/21	8/30/21
Sand Screening		8/26/21	8/30/21
Final Dress & Sea Oat Planting		8/30/21	9/2/21

Striping		7/12/21	9/2/21
----------	--	---------	--------

Insert new rows ABOVE this one

Aug 9, 2021					Aug 16, 2021					Aug 23, 2021					Aug 30, 2021					Sep 6, 2021					Sep 13, 2021					Sep 20, 2021					Sep 27, 2021																				
9	10	11	12	13	14	15	16	17	18	19	20	21	22	23	24	25	26	27	28	29	30	31	1	2	3	4	5	6	7	8	9	10	11	12	13	14	15	16	17	18	19	20	21	22	23	24	25	26	27	28	29	30	1	2	3
M	T	W	T	F	S	S	M	T	W	T	F	S	S	M	T	W	T	F	S	S	M	T	W	T	F	S	S	M	T	W	T	F	S	S	M	T	W	T	F	S	S	M	T	W	T	F	S	S	M	T	W	T	F	S	

PHASE & TASK	WORK ZONE	START	END																															
Erosion control		7/18/21	7/19/21																															
Clearing and Grubbing		7/20/21	7/24/21																															
Regular and Borrow Excavation		7/24/21	7/28/21																															
Subgrade		7/26/21	8/2/21																															
8' Concrete Sidewalks & Driveways		7/27/21	7/6/21																															
Sand Screening		8/2/21	8/6/21																															
Final Dress & Sea Oat Planting		8/6/21	8/9/21																															
Phase 8	Station 159+00 - Station 146.04																																	
MOT		8/10/21	8/12/21																															
Erosion control		8/11/21	8/12/21																															
Clearing and Grubbing		8/13/21	8/17/21																															
Regular and Borrow Excavation		8/17/21	8/21/21																															
Subgrade		8/19/21	8/26/21																															
8' Concrete Sidewalks & Driveways		8/20/21	8/30/21																															
Sand Screening		8/26/21	8/30/21																															
Final Dress & Sea Oat Planting		8/30/21	9/2/21																															
Striping		7/12/21	9/2/21																															

Insert new rows ABOVE this one