



BOARD OF COUNTY COMMISSIONERS
 ESCAMBIA COUNTY, FLORIDA
 ENGINEERING DEPARTMENT
 CONSTRUCTION MANAGEMENT DIVISION

INDEX OF PLANS

SHEET NO. & DESCRIPTION

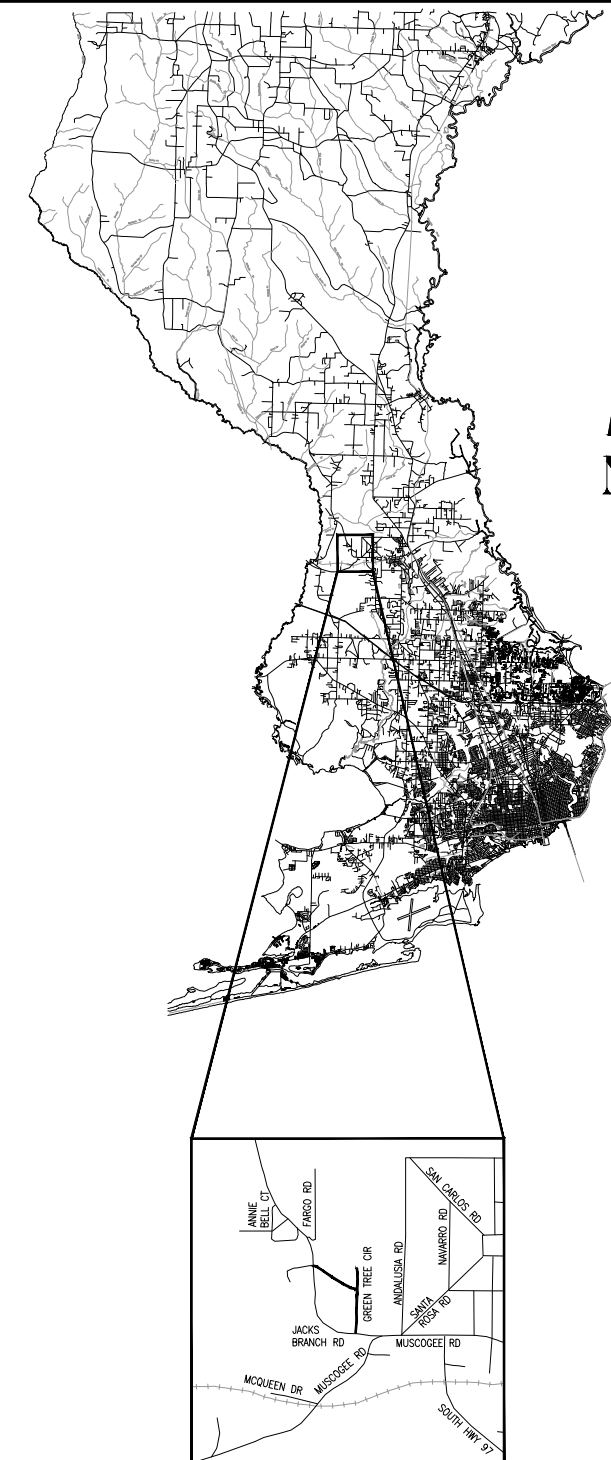
- 1 COVER SHEET
- 2 - 3 EXISTING CONDITIONS PLAN
- 4 - 6 PLAN & PROFILE - GREEN TREE CIR W (1)
- 7 - 10 PLAN & PROFILE - GREEN TREE CIR N (4)

PLANS PROPOSED FOR
**GREEN TREE CIRCLE
 DIRT ROAD PAVING**

FOR PERMITTING
 OCTOBER 2022
 30% SUBMITTAL

COMMISSIONERS

- DISTRICT ONE JEFF BERGOSH, CHAIRMAN
- DISTRICT TWO DOUG UNDERHILL, VICE CHAIRMAN
- DISTRICT THREE LUMON MAY
- DISTRICT FOUR ROBERT BENDER
- DISTRICT FIVE STEVEN BARRY

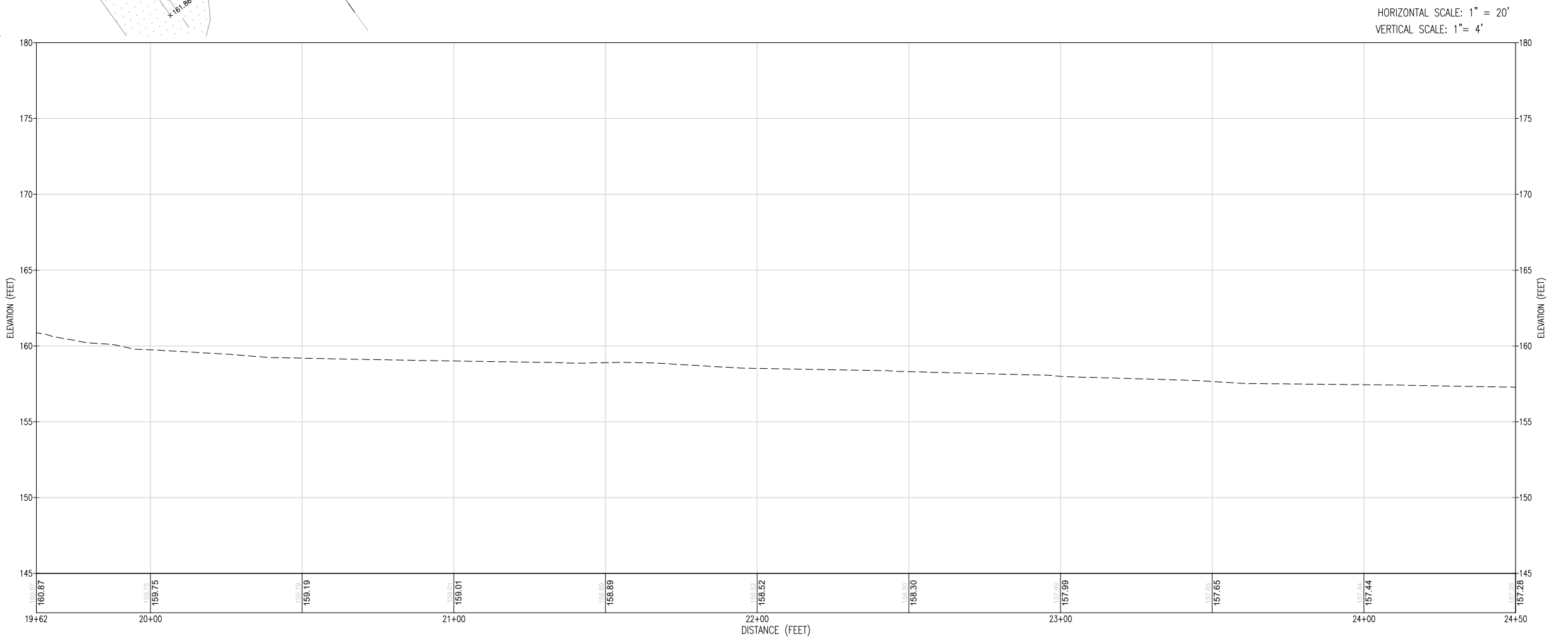
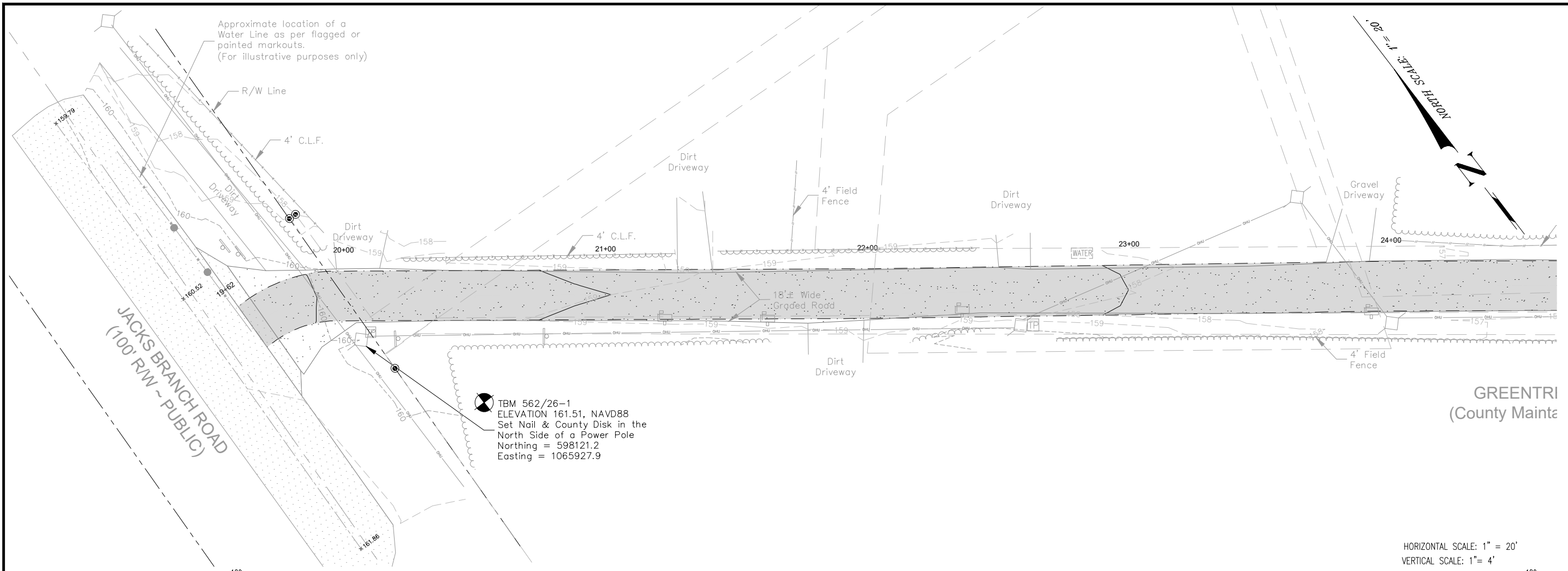


VICINITY MAP
 LENGTH OF PROJECT = 3,492 LF
 0.66 MI

THESE PLANS HAVE BEEN PREPARED IN ACCORDANCE WITH THE LATEST ESCAMBIA COUNTY TECHNICAL SPECIFICATIONS.

ANY REFERENCE TO FDOT STANDARD SPECIFICATIONS FOR ROAD AND BRIDGE CONSTRUCTION, LATEST EDITION, DIVISION 1, GENERAL REQUIREMENTS AND COVENANTS, SHALL BE EXCLUDED AND NOT APPLICABLE TO ANY SPECIFICATION REFERRED HEREIN OR OTHERWISE LISTED IN THESE PLANS OR RELATED DOCUMENTS OR THE ESCAMBIA COUNTY TECHNICAL SPECIFICATIONS.

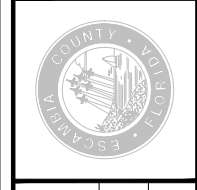
PROJECT MANAGER: DEREK FOX	
SECTION / TOWNSHIP / RANGE: 08 / 1N / 31W	DISTRICT: 5
PROJECT ENGINEER: BRENT SCHNEIDER	REG FLA ENG NO: 70706
SIGNATURE:	DATE: 10/2022



DIRT ROAD PAVING

PLAN & PROFILE - GREEN TREE CIR W (1)

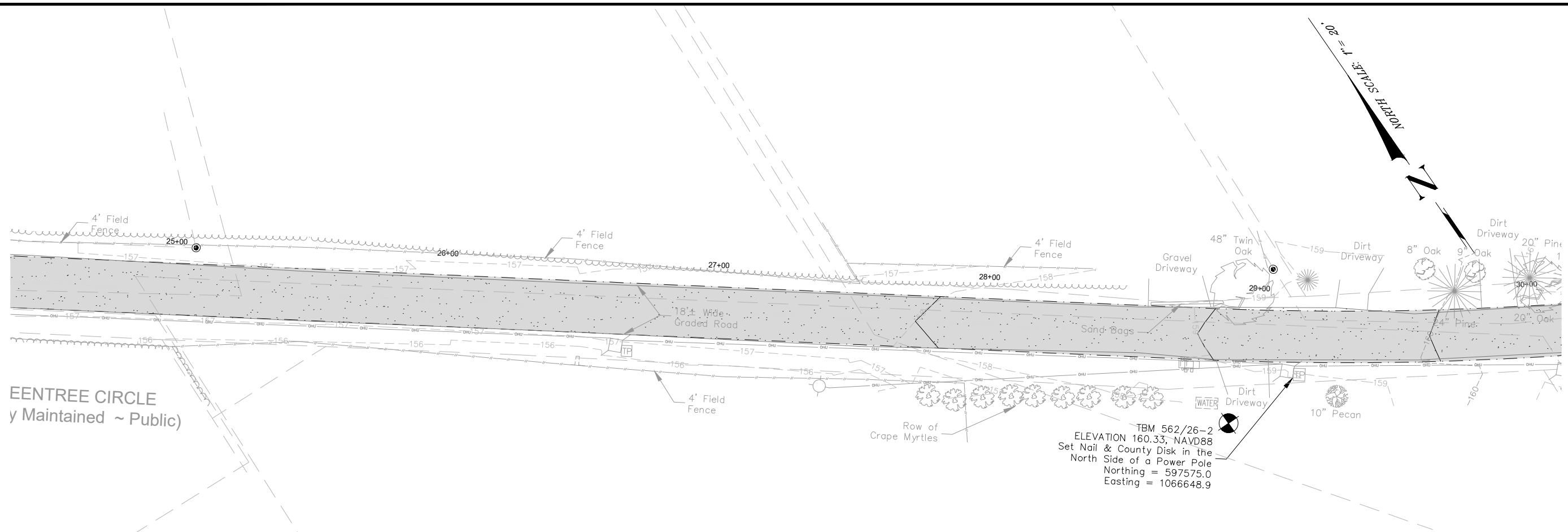
STA. 19+62 TO STA. 24+50



ENGINEERING DIVISION		REG. FLA. ENG. NO.	
ESCAMBIA COUNTY, FLORIDA		76144	
3363 WEST PARK PLACE, PENSACOLA, FLORIDA 32505		SIGNATURE:	
DRAWN BY:	CHECKED BY:	DATE:	SECTION/TOWNSHIP/RANGE:
M. KIRKLAND	J. KING	11/22/2015	08 IN / 31W
PROJECT MANAGER:	DISTRICT:	FIELDBOOK PAGES:	XXXXX
NEK CHAUVIN	5		

NUMBER	REVISIONS	DATE	APPROVED BY

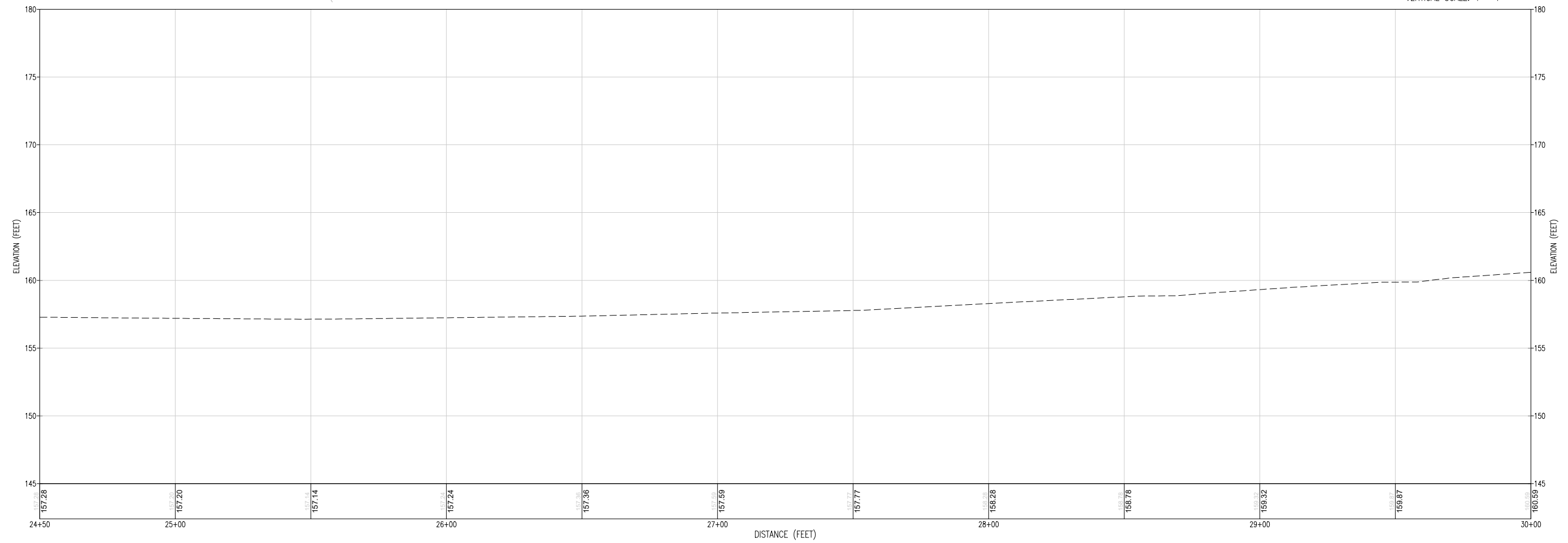
DRAWING NUMBER	XXXXX
PROJECT NUMBER	ENGXXX
SURVEY NUMBER	XXXXXX
SHEET	4 OF XX



EENTREE CIRCLE
y Maintained ~ Public)

TBM 562/26-2
ELEVATION 160.33, NAVD88
Set Nail & County Disk in the
North Side of a Power Pole
Northing = 597575.0
Easting = 1066648.9

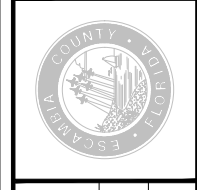
HORIZONTAL SCALE: 1" = 20'
VERTICAL SCALE: 1" = 4'



DIRT ROAD PAVING

PLAN & PROFILE - GREEN TREE CIR W (2)

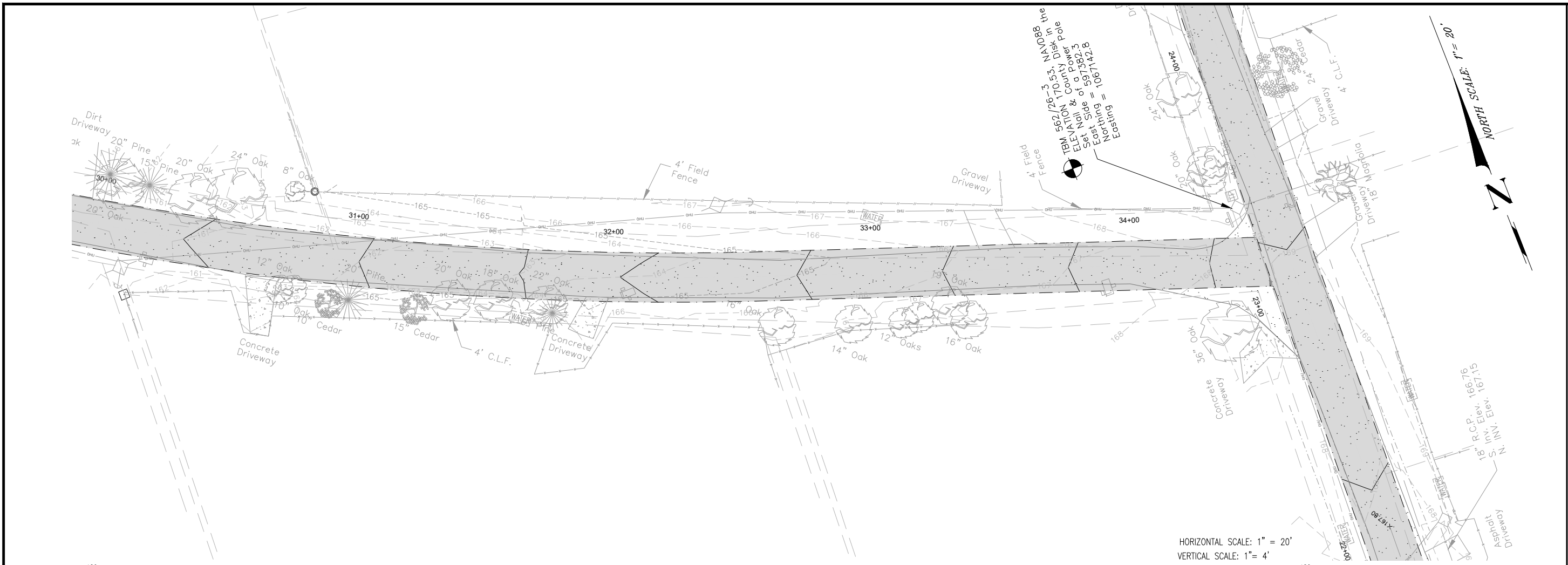
STA. 24+50 TO STA. 30+00



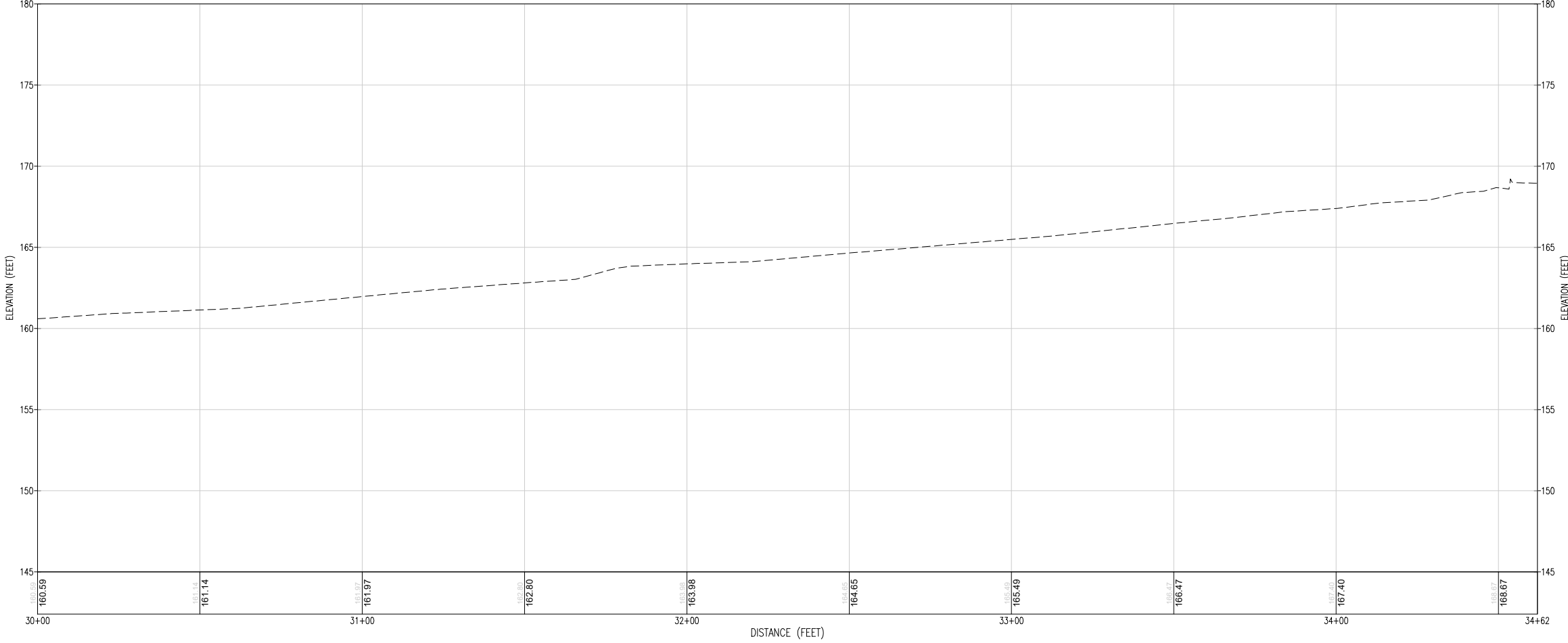
ENGINEERING DIVISION		REG. P.E. ENG. NO.	
ESCAMBIA COUNTY, FLORIDA		76144	
3363 WEST PARK PLACE, PENSACOLA, FLORIDA 32505		SIGNATURE:	
DRAWN BY:	CHECKED BY:	DATE:	SECTION/TOWNSHIP/RANGE:
M. KIRKLAND	J. KING	11/22/2015	08 / IN / 31W
PROJECT MANAGER:	DISTRICT:	FIELDBOOK PAGES:	XXXXX
NECK CHAUVIN	5	XXXXX	

NUMBER	REVISIONS	DATE	APPROVED BY

DRAWING NUMBER	XXXXXX
PROJECT NUMBER	ENGXXXX
SURVEY NUMBER	XXXXXXX
SHEET	5 OF XX



HORIZONTAL SCALE: 1" = 20'
 VERTICAL SCALE: 1" = 4'



DIRT ROAD PAVING

PLAN & PROFILE - GREEN TREE CIR W (3)



ENGINEERING DIVISION
 ESCAMBIA COUNTY, FLORIDA
 3363 WEST PARK PLACE, PENSACOLA, FLORIDA 32505

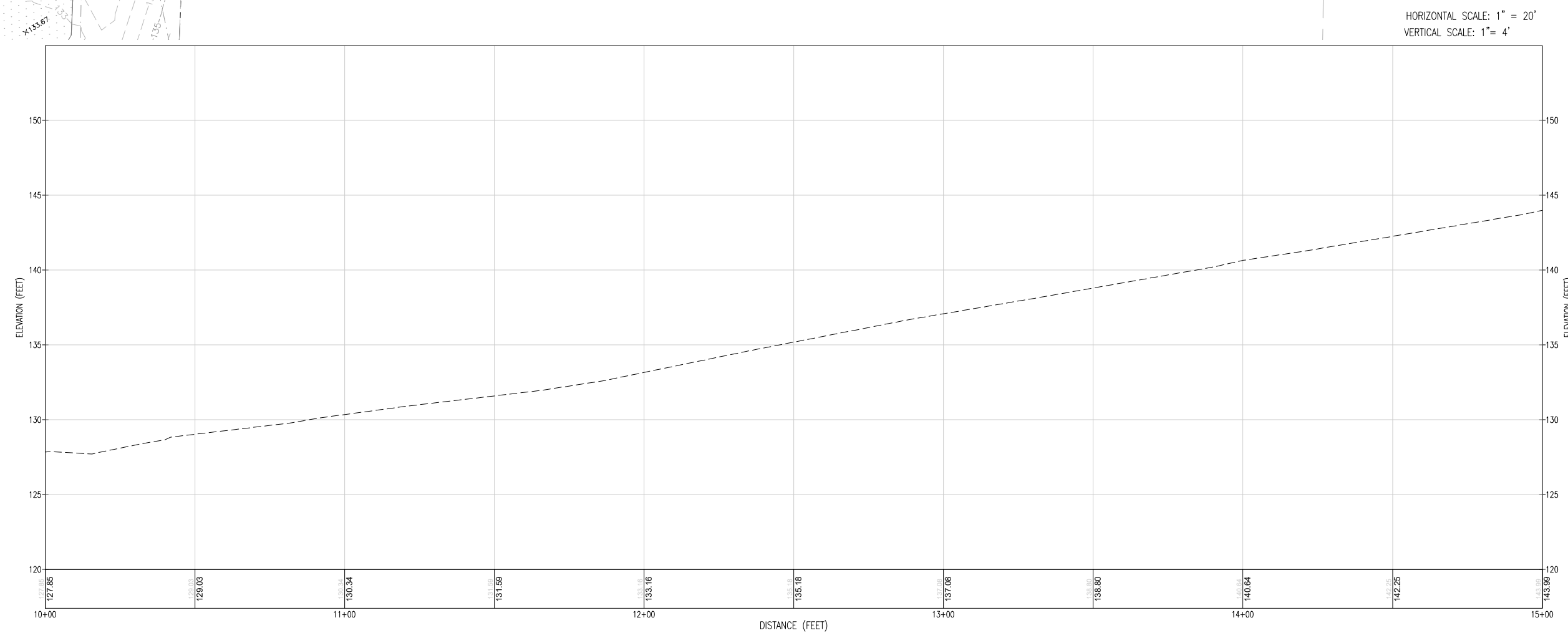
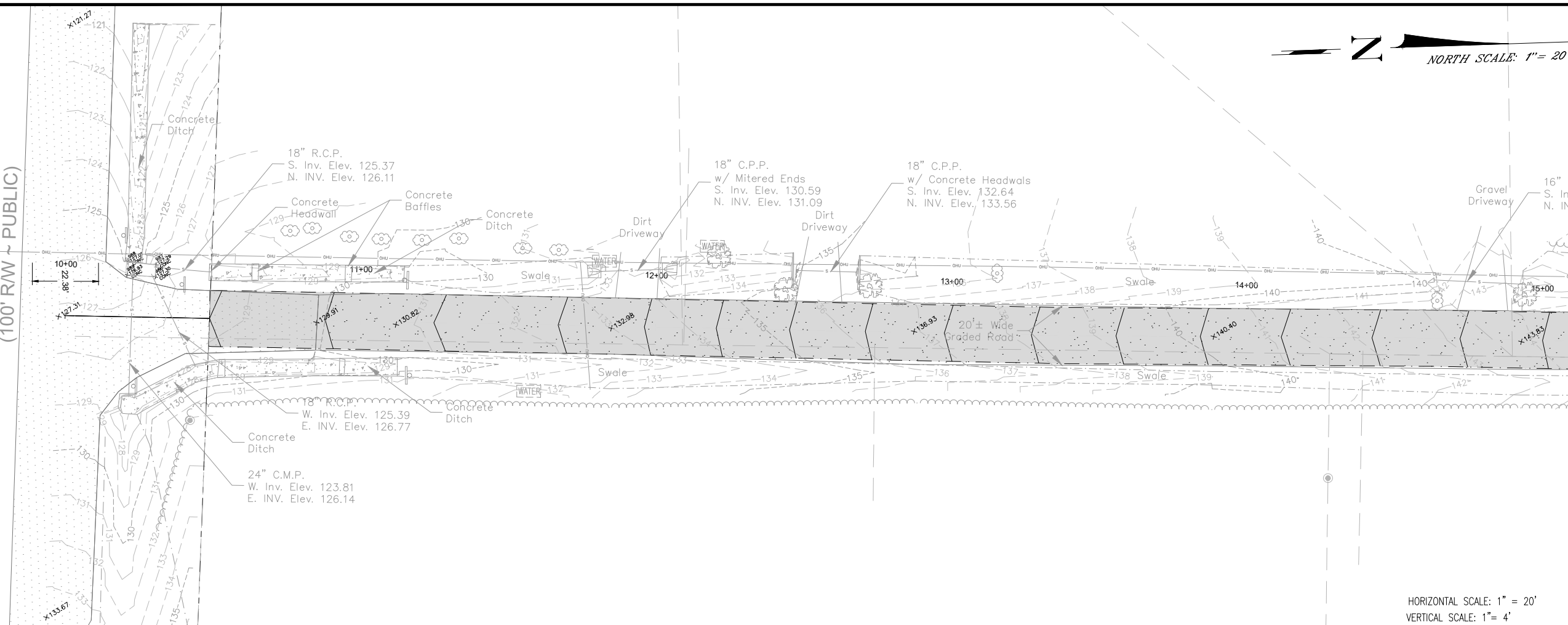
DESIGNED BY: J. KING	CHECKED BY: J. KING	REG. P.E. NO.:	DATE:
PROJECT MANAGER: NEEK CHAUVIN	DISTRICT: 5	76144	7/6/14
FIELDBOOK PAGES: XXXXX		SECTION/TOWNSHIP/RANGE: 08 / IN / 31W	

NUMBER	REVISIONS	DATE	APPROVED BY

DRAWING NUMBER	XXXXX
PROJECT NUMBER	ENGXXX
SURVEY NUMBER	XXXXXX

STA. 30+00 TO STA. 34+62

JACKS BRANCH ROAD
(100' RW - PUBLIC)



**DIRT ROAD PAVING
PLAN & PROFILE - GREEN TREE CIR N (4)**

STA. 10+50 TO STA. 15+00

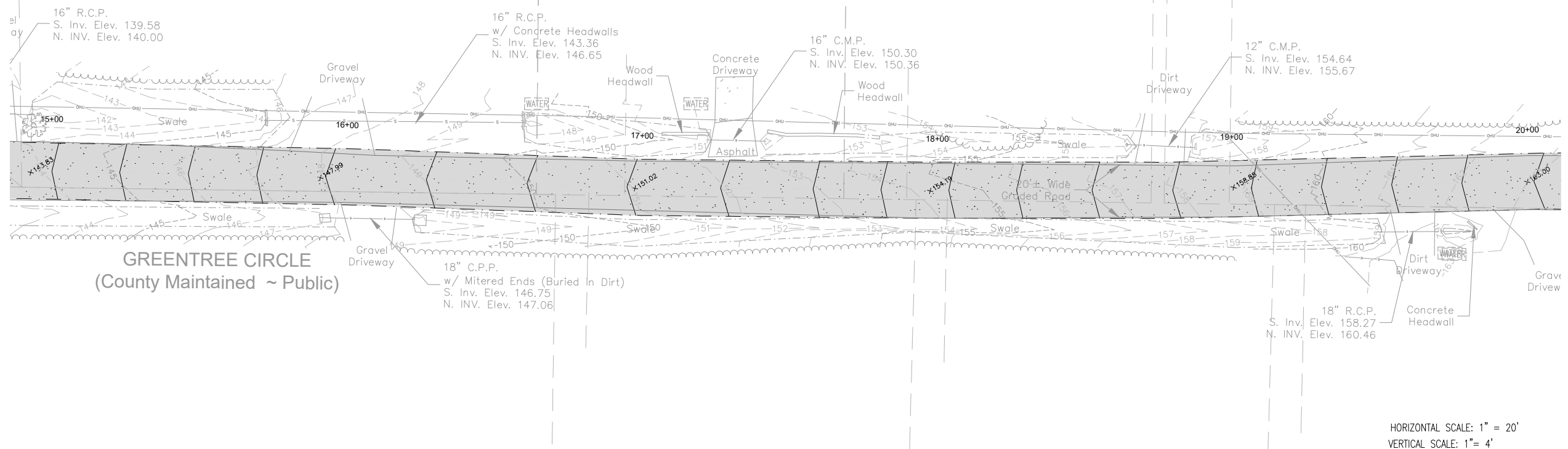


ENGINEERING DIVISION
 ESCAMBIA COUNTY, FLORIDA
 3363 WEST PARK PLACE, PENSACOLA, FLORIDA 32505

DESIGNED BY: J. KING	CHECKED BY: J. KING	REG. P.E. NO.:	DATE:
PROJECT MANAGER: NECK CHAUVIN	DISTRICT:	76144	7/6/14
SECTION/TOWNSHIP/RANGE:	5		
08 / IN / 31W			

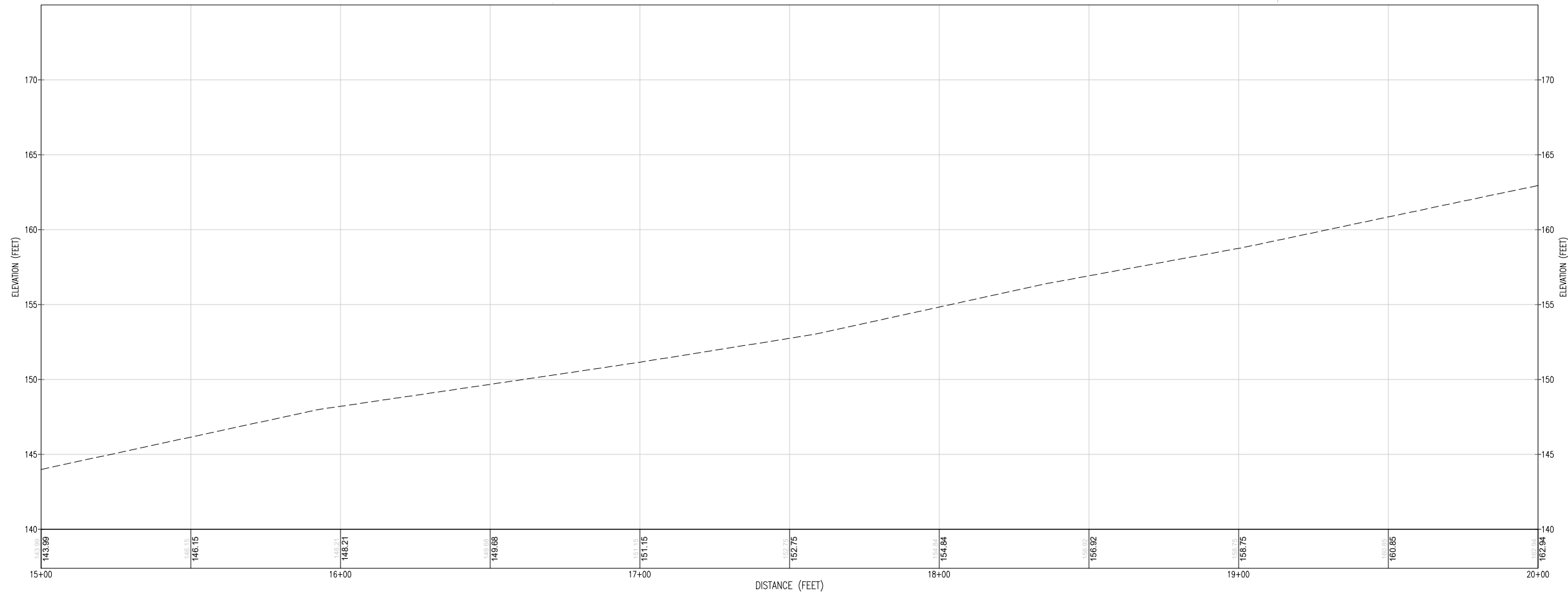
NUMBER	REVISIONS	DATE	APPROVED BY

DRAWING NUMBER	XXXXXX
PROJECT NUMBER	ENGXXXX
SURVEY NUMBER	XXXXXXX
SHEET	7 OF XX



GREENTREE CIRCLE
(County Maintained ~ Public)

HORIZONTAL SCALE: 1" = 20'
VERTICAL SCALE: 1" = 4'



DIRT ROAD PAVING
PLAN & PROFILE - GREEN TREE CIR N (S)

STA. 15+00 TO STA. 20+00



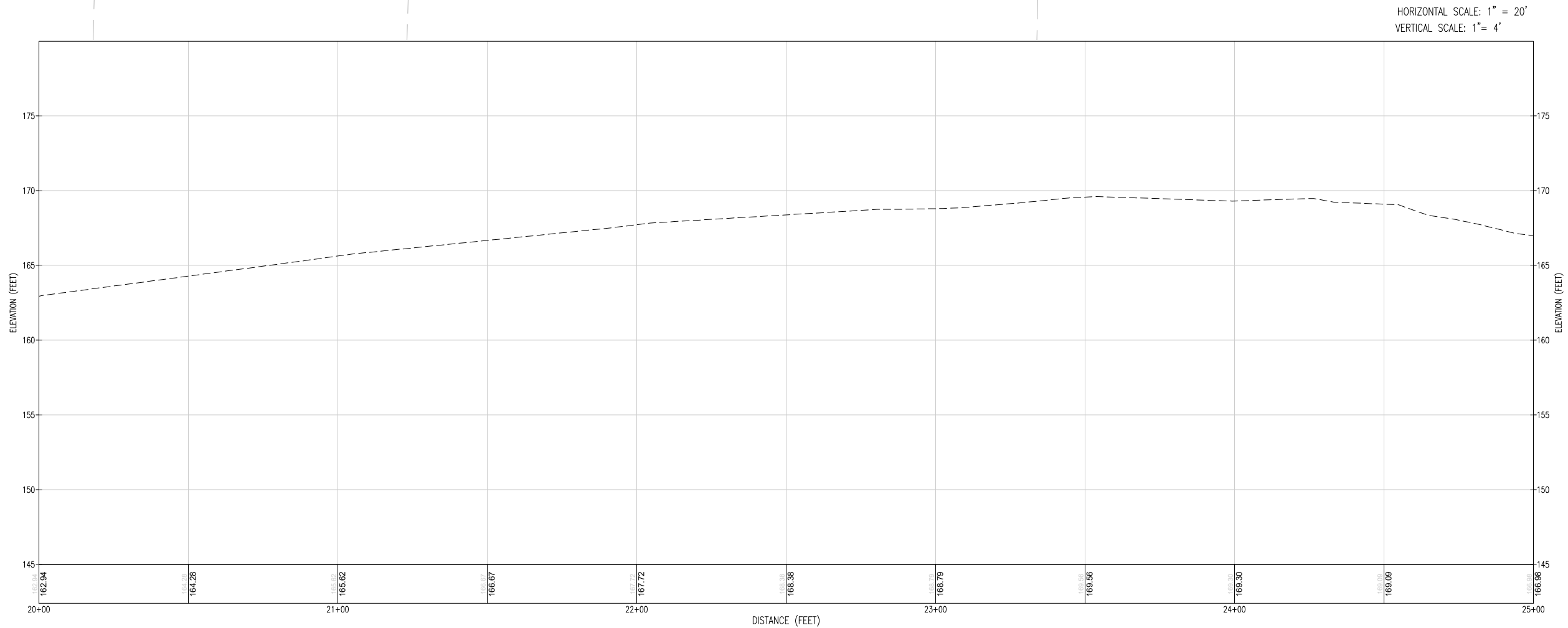
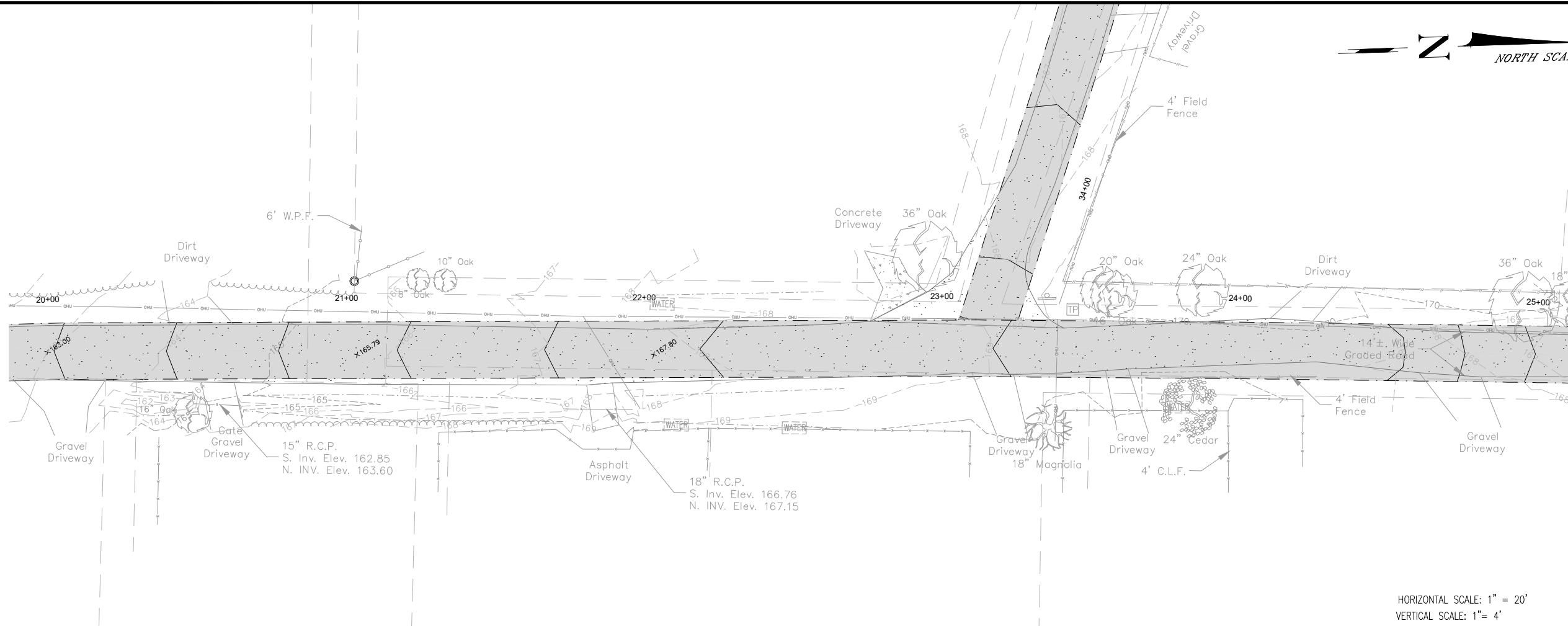
ENGINEERING DIVISION
ESCAMBIA COUNTY, FLORIDA

3363 WEST PARK PLACE, PENSACOLA, FLORIDA 32505

DRAWN BY: M. KIRKLAND	CHECKED BY: J. KING	REG. P.E. LIC. NO. 76144	DATE: 11/22/2015
DESIGNED BY: J. KING	PROJECT MANAGER: NECK CHAUVIN	DISTRICT: 5	SECTION/TOWNSHIP/RANGE: 08 / N / 31W
DATE: 11/22/2015	FIELDBOOK PAGES: XXXXX	SIGNATURE:	XXXXX

NUMBER	REVISIONS	DATE	APPROVED BY

DRAWING NUMBER	XXXXXX
PROJECT NUMBER	ENGXXXX
SURVEY NUMBER	XXXXXXXX
SHEET	8 OF XX



HORIZONTAL SCALE: 1" = 20'
 VERTICAL SCALE: 1" = 4'

DIRT ROAD PAVING PLAN & PROFILE - GREEN TREE CIR N (6)



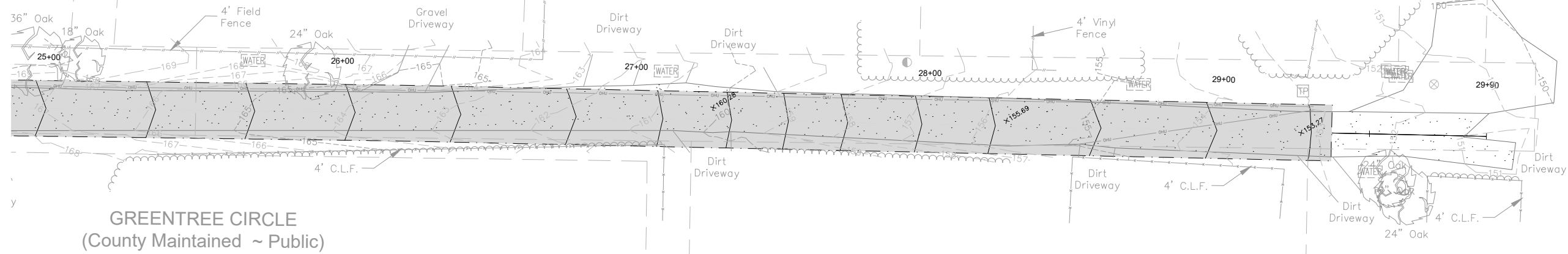
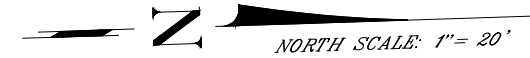
ENGINEERING DIVISION
 ESCAMBIA COUNTY, FLORIDA
 3363 WEST PARK PLACE, PENSACOLA, FLORIDA 32505

DRAWN BY: M. KIRKLAND	DESIGNED BY: J. KING	CHECKED BY: J. KING	REG. P.E. NO. NO. 76144	DATE: 11/22/2015
PROJECT MANAGER: NEK CHAUVIN		DISTRICT: 5		SECTION/TOWNSHIP/RANGE: 08 / N / 31W
FIELDBOOK PAGES: XXXXX				

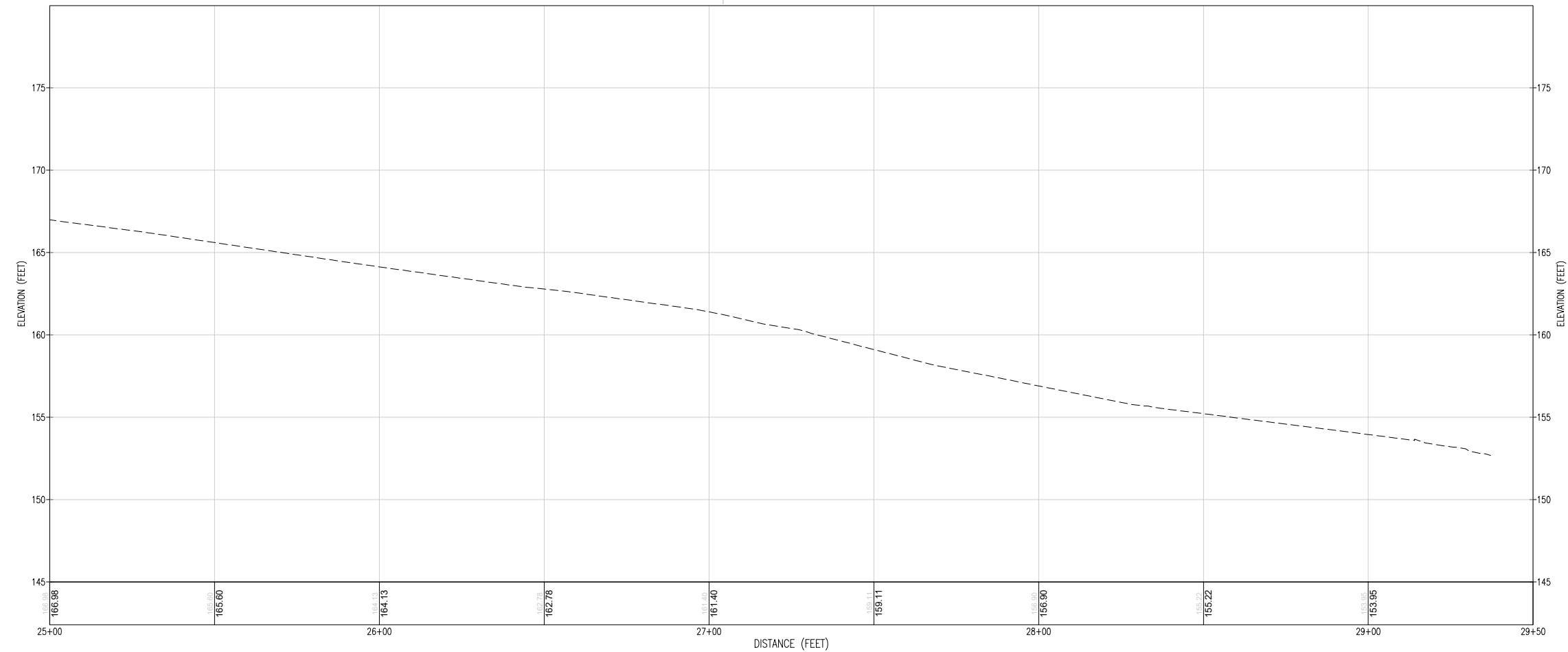
NUMBER	REVISIONS	DATE	APPROVED BY

DRAWING NUMBER	XXXXX
PROJECT NUMBER	ENGXXX
SURVEY NUMBER	XXXXXX
SHEET	9 OF XX

STA. 20+00 TO STA. 25+00



HORIZONTAL SCALE: 1" = 20'
VERTICAL SCALE: 1" = 4'



DIRT ROAD PAVING PLAN & PROFILE - GREEN TREE CIR N (7)

STA. 25+00 TO STA. 29+00



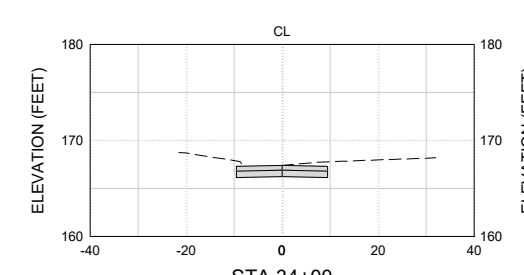
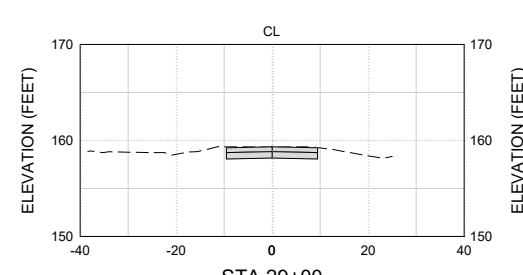
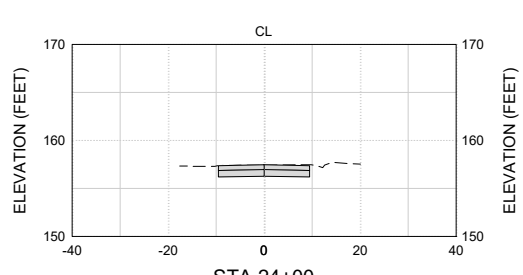
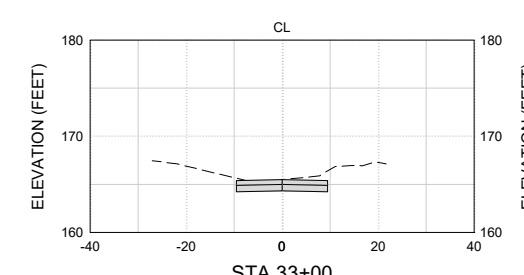
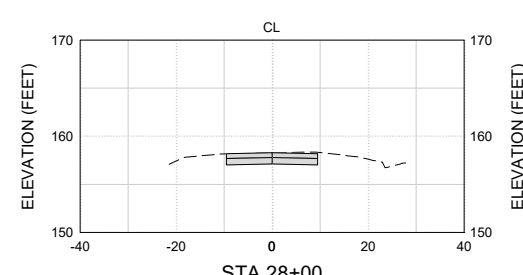
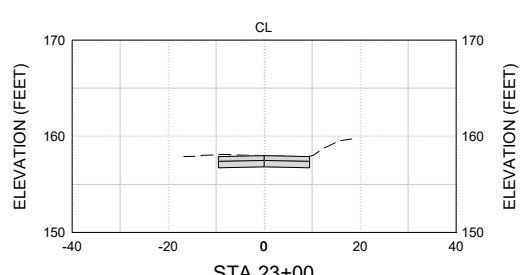
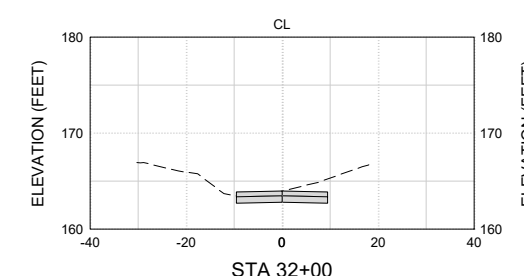
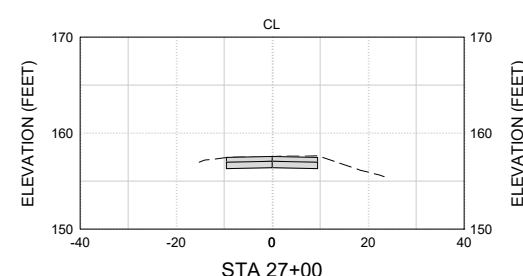
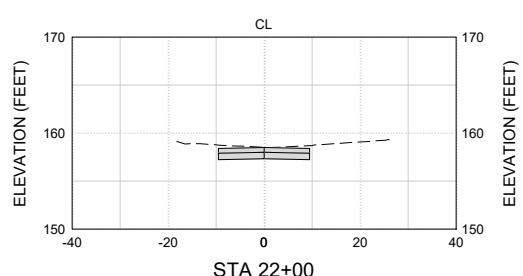
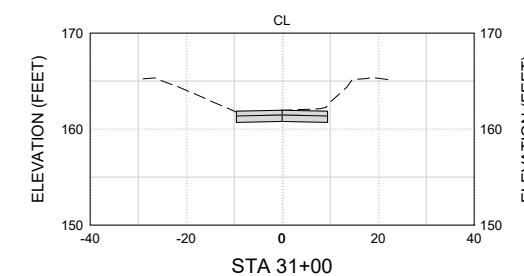
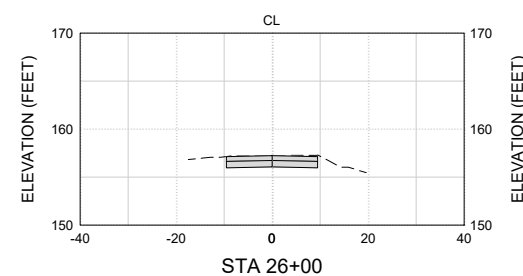
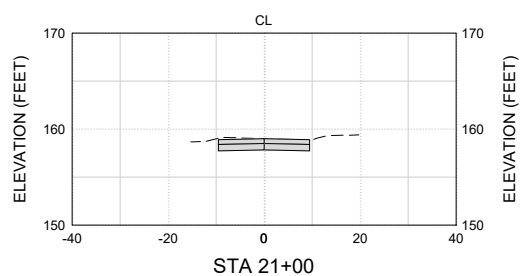
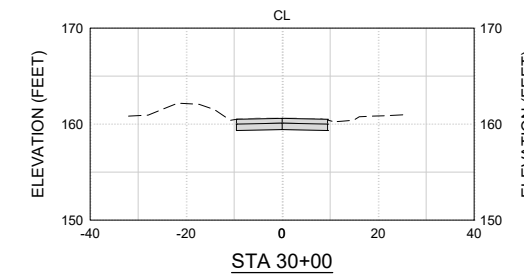
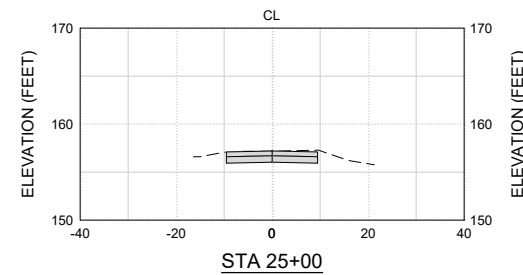
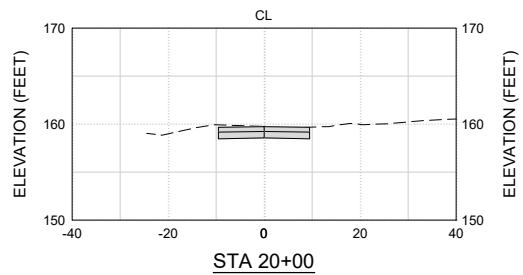
ENGINEERING DIVISION ESCAMBIA COUNTY, FLORIDA

3363 WEST PARK PLACE, PENSACOLA, FLORIDA 32505

DRAWN BY: M. KIRKLAND	CHECKED BY: J. KING	REG. P.E. ENG. NO. 76144	DATE: 11/22/2015
PROJECT MANAGER: NEEK CHAUVIN	DISTRICT: 5	SECTION/TOWNSHIP/RANGE 08 / IN / 31W	SIGNATURE: XXXXXX

NUMBER	REVISIONS	DATE	APPROVED BY

DRAWING NUMBER	XXXXXX
PROJECT NUMBER	ENGXXXX
SURVEY NUMBER	XXXXXXX
SHEET	10 OF XX



DIRT ROAD PAVING
SECTIONS - GREEN TREE CIR W (1)

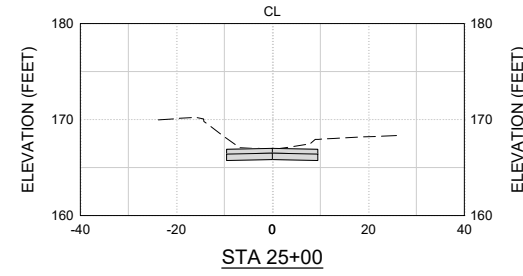
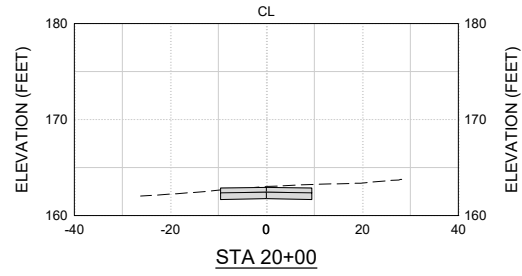
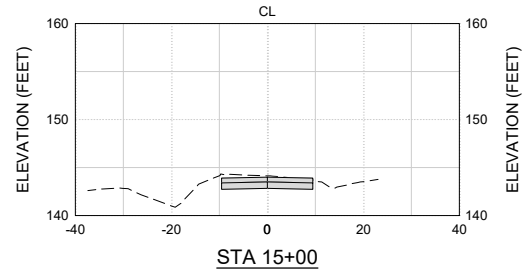
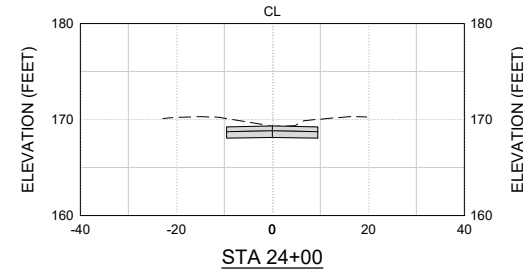
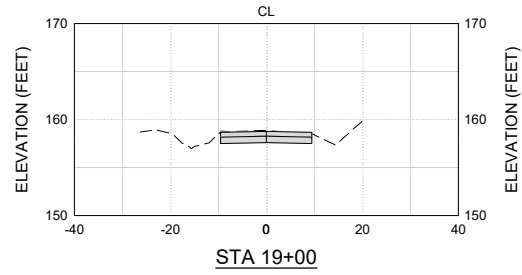
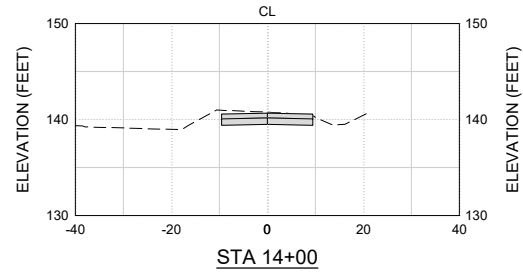
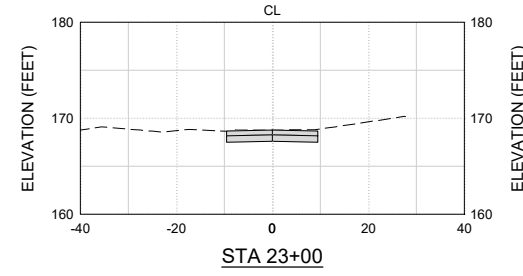
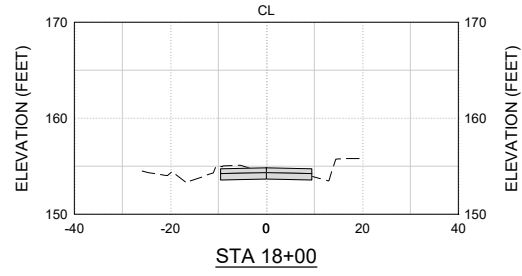
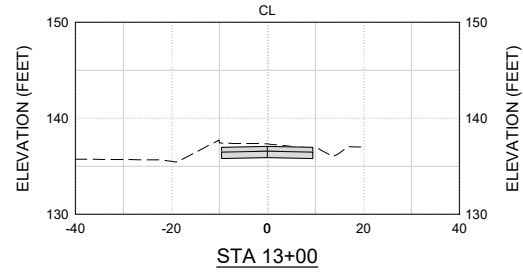
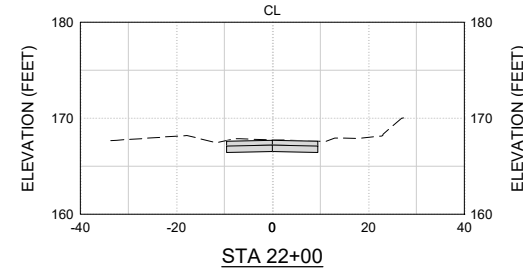
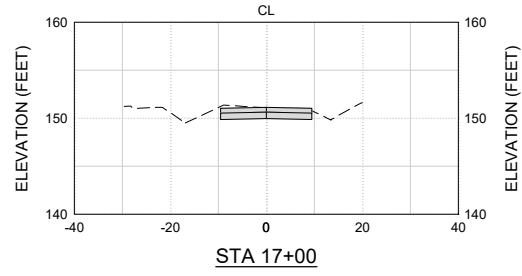
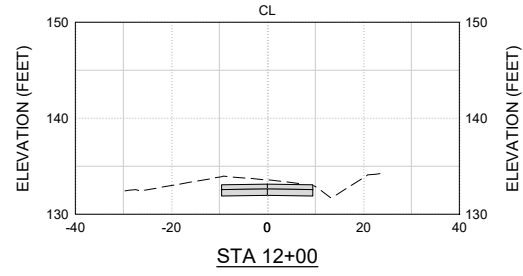
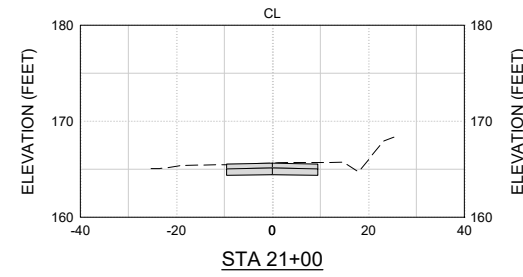
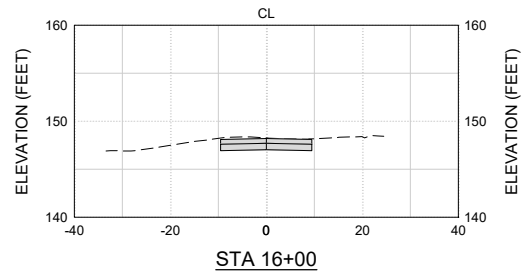
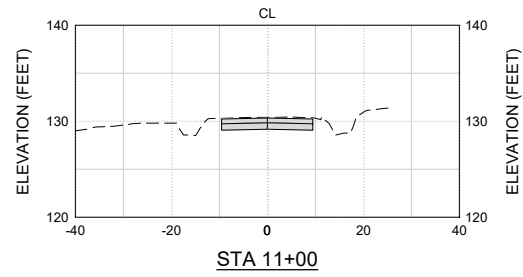


ENGINEERING DIVISION
 ESCAMBIA COUNTY, FLORIDA
 3363 WEST PARK PLACE, PENSACOLA, FLORIDA 32505

DRAWN BY: M. KIRKLAND	CHECKED BY: J. KING	REG. FLA. ENG. NO. 76144	DATE
DATE: 11/22/2015	PROJECT MANAGER: NECK CHAUVIN	DISTRICT: 5	SIGNATURE:
FIELDBOOK PAGES: XXXXX	SECTION/TOWNSHIP/RANGE: 08 / IN / 31W		

NUMBER	REVISIONS	DATE	APPROVED BY

DRAWING NUMBER	ENGXXX
PROJECT NUMBER	XXXXXX
SURVEY NUMBER	XXXXXX
SHEET	OF XX



DIRT ROAD PAVING
SECTIONS - GREEN TREE CIR N (2)



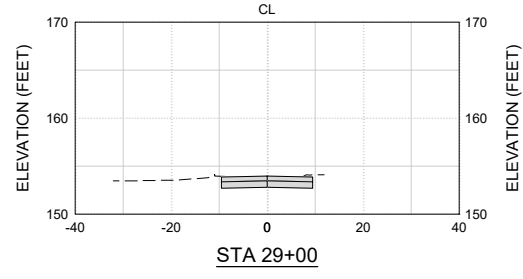
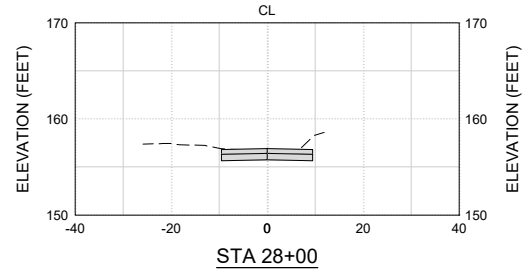
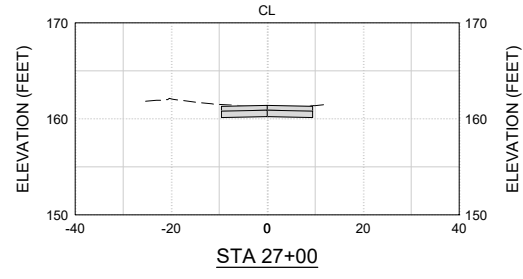
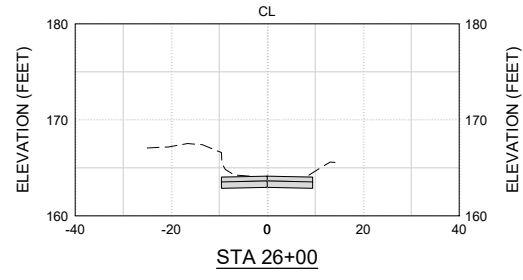
ENGINEERING DIVISION
ESCAMBIA COUNTY, FLORIDA

3363 WEST PARK PLACE, PENSACOLA, FLORIDA 32505

DRAWN BY: M. KIRKLAND	DESIGNED BY: J. KING	CHECKED BY: J. KING	REG. FLA. ENG. NO. 76144	DATE
DATE: 11/22/2015	PROJECT MANAGER: NEEK CHAUVIN	DISTRICT: 5	SIGNATURE:	
FIELDBOOK PAGES: XXXXX			SECTION/TOWNSHIP/RANGE: 08 / IN / 31W	

NUMBER	REVISIONS	DATE	APPROVED BY

DRAWING NUMBER
PROJECT NUMBER: **ENGXXX**
SURVEY NUMBER: **XXXXXX**
SHEET **12** OF **XX**



**DIRT ROAD PAVING
SECTIONS - GREEN TREE CIR N (3)**



ENGINEERING DIVISION
 ESCAMBIA COUNTY, FLORIDA
 3363 WEST PARK PLACE, PENSACOLA, FLORIDA 32505

DRAWN BY: M. KIRKLAND	DESIGNED BY: J. KING	CHECKED BY: J. KING	REG. P.E. ENG. NO. 76144	DATE
DATE: 11/22/2015	PROJECT MANAGER: NEEK CHAUVIN	DISTRICT: 5	SIGNATURE:	
FIELDBOOK PAGES: XXXXX	SECTION/TOWNSHIP/RANGE 08 / N / 31W			

NUMBER	REVISIONS	DATE	APPROVED BY

DRAWING NUMBER
 PROJECT NUMBER: **ENGXXX**
 SURVEY NUMBER: **XXXXXX**
 SHEET **13** OF **XX**