

C:\users\kanecj\appdata\local\bentley\projectwise\jacobs-americas-01\dms40680\00-G-000_D3598100.dwg, Dec 14, 2022 - 9:46:18PM, KANECU



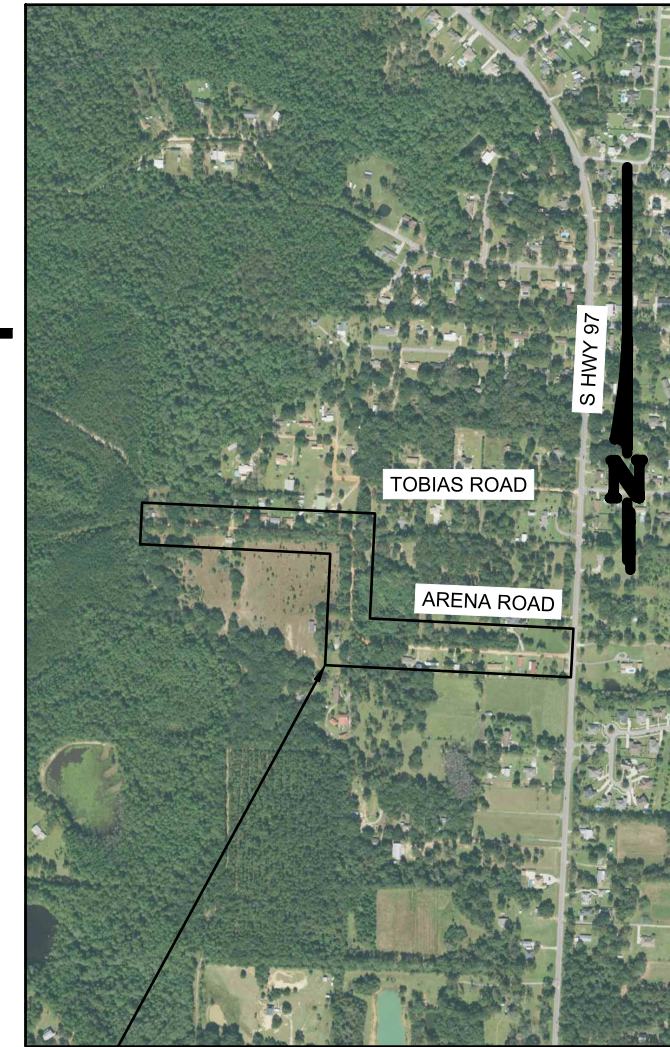
BOARD OF COUNTY COMMISSIONERS
ESCAMBIA COUNTY, FLORIDA
ENGINEERING DEPARTMENT
CONSTRUCTION MANAGEMENT DIVISION

INDEX OF PLANS

SHEET NO. & DESCRIPTION

- 1. COVER SHEET
- 2. OVERALL SITE PLAN
- 3. TYPICAL SECTIONS
- 4. TYPICAL SECTIONS
- 5. PROPOSED PLANS
- 6. PROPOSED PLANS
- 7. PROPOSED PLANS
- 8. PROPOSED PLANS
- 9. PROPOSED PLANS
- 10. PROPOSED PLANS
- 11. PROPOSED PLANS

PLANS PROPOSED FOR
ARENA ROAD
DIRT ROAD PAVING



PROJECT LOCATION

CONCEPTUAL PLANS
DECEMBER 2022

COMMISSIONERS

- DISTRICT ONE JEFF BERGOSH
- DISTRICT TWO MIKE KOHLER
- DISTRICT THREE LUMON MAY, CHAIRMAN
- DISTRICT FOUR ROBERT BENDER
- DISTRICT FIVE STEVEN BARRY, VICE CHAIRMAN

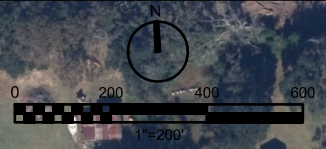
THESE PLANS HAVE BEEN PREPARED IN ACCORDANCE WITH THE LATEST ESCAMBIA COUNTY TECHNICAL SPECIFICATIONS.

ANY REFERENCE TO FDOT STANDARD SPECIFICATIONS FOR ROAD AND BRIDGE CONSTRUCTION, LATEST EDITION, DIVISION 1, GENERAL REQUIREMENTS AND COVENANTS, SHALL BE EXCLUDED AND NOT APPLICABLE TO ANY SPECIFICATION REFERRED HEREIN OR OTHERWISE LISTED IN THESE PLANS OR RELATED DOCUMENTS OR THE ESCAMBIA COUNTY TECHNICAL SPECIFICATIONS.

| | |
|-----------------------------------|--------------------------|
| PROJECT MANAGER: JOHN ROSENAU | |
| SECTION / TOWNSHIP / RANGE: | DISTRICT: 4 |
| PROJECT ENGINEER: MICHAEL GUND | REG FLA ENG NO: 79401 |
| SIGNATURE: | DATE: 12/2022 |

1 2 3 4 5 6

A
B
C
D



CUL-DE-SAC
LOCATION
OPTION A

CUL-DE-SAC
LOCATION
OPTION B



ARENA ROAD DIRT ROAD PAVING
BOARD OF COUNTY COMMISSIONERS
ESCAMBA COUNTY, FLORIDA

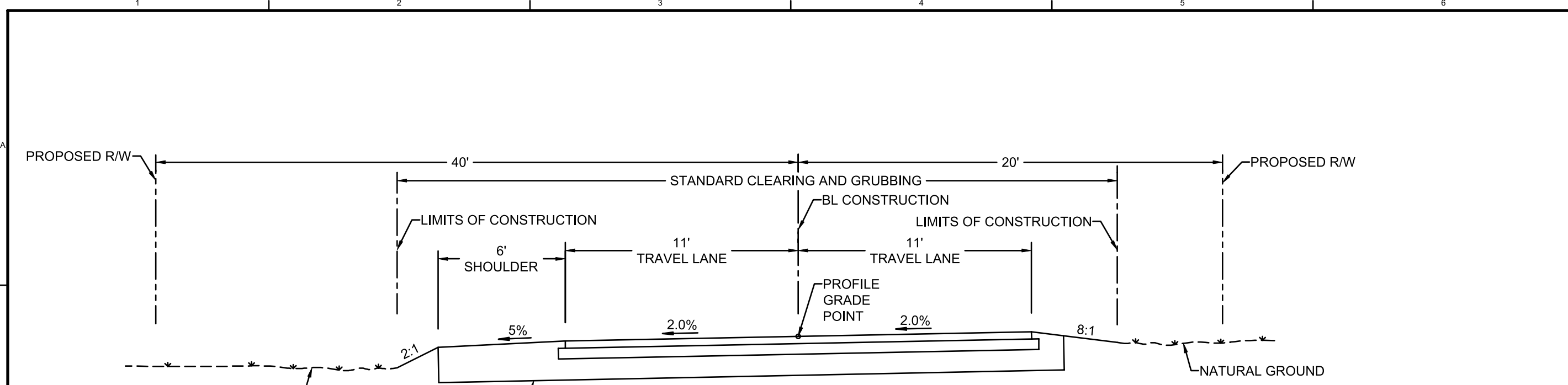


CIVIL
OVERALL SITE PLAN

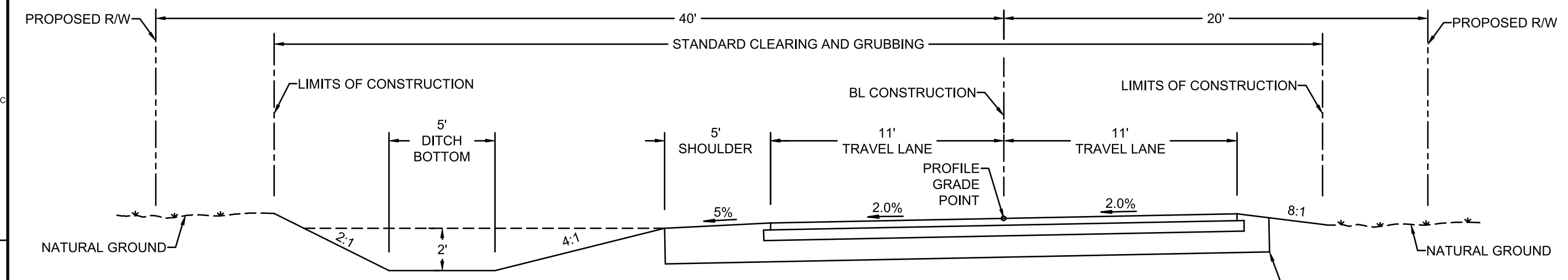
VERIFY SCALE
BAR IS ONE INCH ON
ORIGINAL DRAWING.

| | |
|-------|---------------|
| DATE | DECEMBER 2022 |
| PROJ | D3598100 |
| DWG | 05-C-001 |
| SHEET | 2 of 11 |

| REVISION | |
|----------|------|
| NO. | DATE |
| DR | CHK |
| BY | APVD |
| | |
| | |
| | |
| | |
| | |
| | |
| | |
| | |



TYPICAL SECTION 4
ARENA ROAD
 STA. 116+50 TO STA.122+00
 NEW CONSTRUCTION
 6" GRADED AGGREGATE BASE WITH
 3" THICK COUNTY SPEC 2500 TYPE SP 12.5 ASPHALT



TYPICAL SECTION 5
ARENA ROAD
 STA. 122+00 TO STA. 131+22.90
 NEW CONSTRUCTION
 6" GRADED AGGREGATE BASE WITH
 3" THICK COUNTY SPEC 2500 TYPE SP 12.5 ASPHALT

NOTE:
 PROJECT DESIGN SPEED 15 MPH

| | | | | | |
|--|--|--|--|--|--|
| | | | | | |
| | | | | | |
| | | | | | |
| | | | | | |
| | | | | | |
| | | | | | |
| | | | | | |
| | | | | | |
| | | | | | |
| | | | | | |
| | | | | | |
| | | | | | |

ARENA ROAD DIRT ROAD PAVING
 BOARD OF COUNTY COMMISSIONERS
 ESCAMBIA COUNTY, FLORIDA



| | |
|--------------------------------------|---------------|
| VERIFY SCALE | |
| BAR IS ONE INCH ON ORIGINAL DRAWING. | |
| DATE | DECEMBER 2022 |
| PROJ | D3598100 |
| DWG | 05-C-003 |
| SHEET | 4 of 11 |

30% DESIGN DOCUMENTS
 REUSE OF DOCUMENTS: THIS DOCUMENT, AND THE IDEAS AND DESIGNS INCORPORATED HEREIN, AS AN INSTRUMENT OF PROFESSIONAL SERVICE, IS THE PROPERTY OF JACOBS AND IS NOT TO BE USED, IN WHOLE OR IN PART, FOR ANY OTHER PROJECT WITHOUT THE WRITTEN AUTHORIZATION OF JACOBS.
 © JACOBS 2022. ALL RIGHTS RESERVED.

LEGEND

EXISTING DIRT ROAD

EXIST. PROPERTY LINES (TYP.)

PROP. EDGE OF PAVEMENT

PROP. R/W

BEGIN CURB AND GUTTER

TYPE 1 CURB INLET

BL CONST. ARENA ROAD

4' X 4' X 1.5' RIP RAP PAD

26' - 24" RCP

CS-1
RIM:122.10

CS-2
RIM:122.29

INV IN:119.77 24" RCP

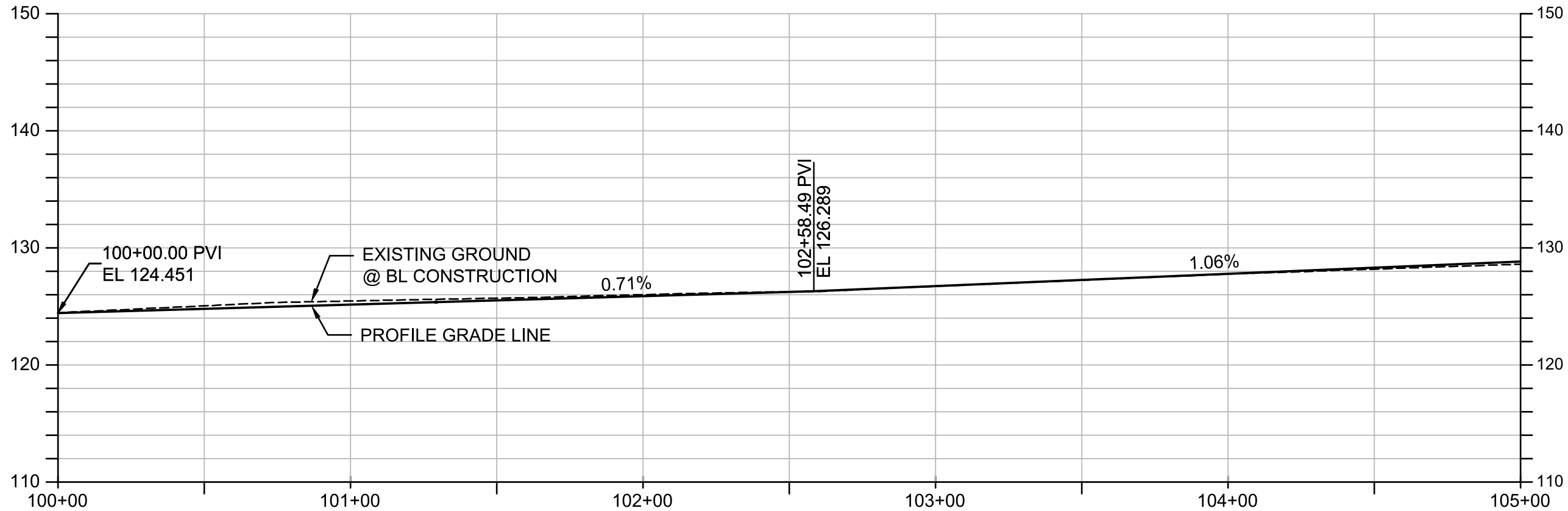
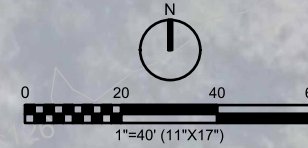
INV OUT:119.96 24" RCP

LIMIT OF CONSTRUCTION

CS-3
RIM:125.82
INV OUT:123.49 24" RCP
13' - 24" RCP

CI-1
RIM:128.81
INV IN:123.63 24" RCP
INV OUT:123.73 24" RCP

SEE DRAWING C-202



| NO. | DATE | DR | REVISION | CHK | BY |
|-----|------|----|----------|-----|----|
| | | | | | |
| | | | | | |
| | | | | | |
| | | | | | |

ARENA ROAD DIRT ROAD PAVING
BOARD OF COUNTY COMMISSIONERS
ESCAMBIA COUNTY, FLORIDA

Jacobs
CIVIL
PLAN AND PROFILE
STA 100+00 TO STA 105+00

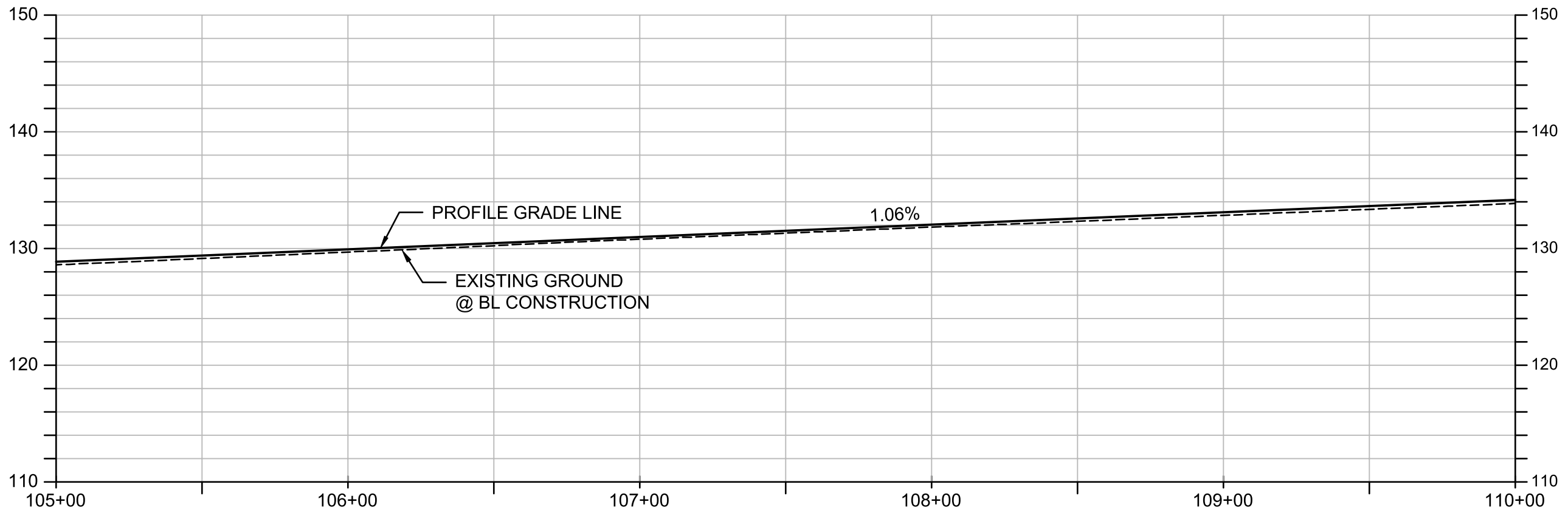
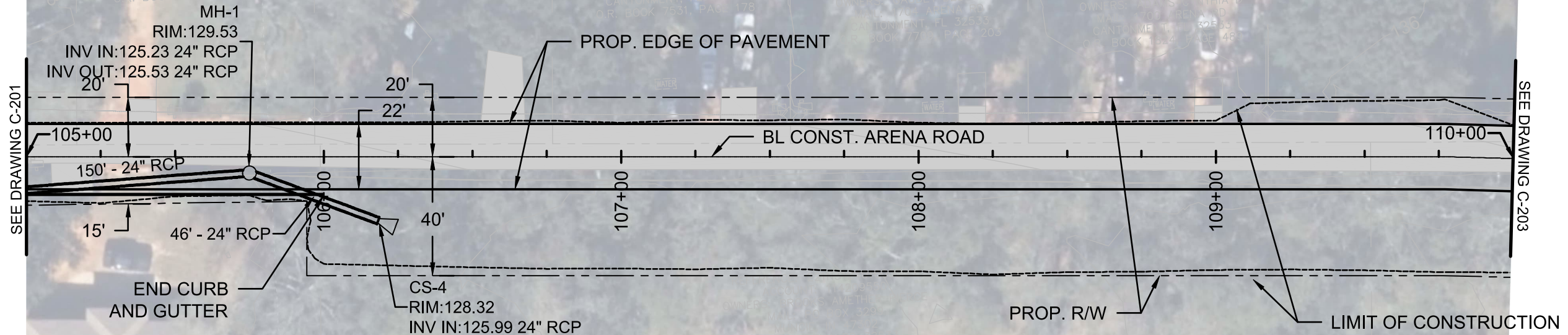
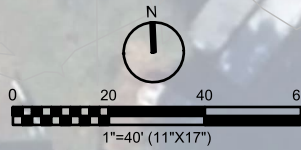
| | |
|--------------|--------------------------------------|
| VERIFY SCALE | BAR IS ONE INCH ON ORIGINAL DRAWING. |
| DATE | DDECEMBER 2022 |
| PROJ | D3598100 |
| DWG | 05-C-201 |
| SHEET | 5 of 11 |

30% DESIGN DOCUMENTS
RE/USE OF DOCUMENTS: THIS DOCUMENT, AND THE IDEAS AND DESIGNS INCORPORATED HEREIN, AS AN INSTRUMENT OF PROFESSIONAL SERVICE, IS THE PROPERTY OF JACOBS AND IS NOT TO BE USED, IN WHOLE OR IN PART, FOR ANY OTHER PROJECT WITHOUT THE WRITTEN AUTHORIZATION OF JACOBS. © JACOBS 2022. ALL RIGHTS RESERVED.

LEGEND

EXISTING DIRT ROAD

EXIST. PROPERTY LINES (TYP.)



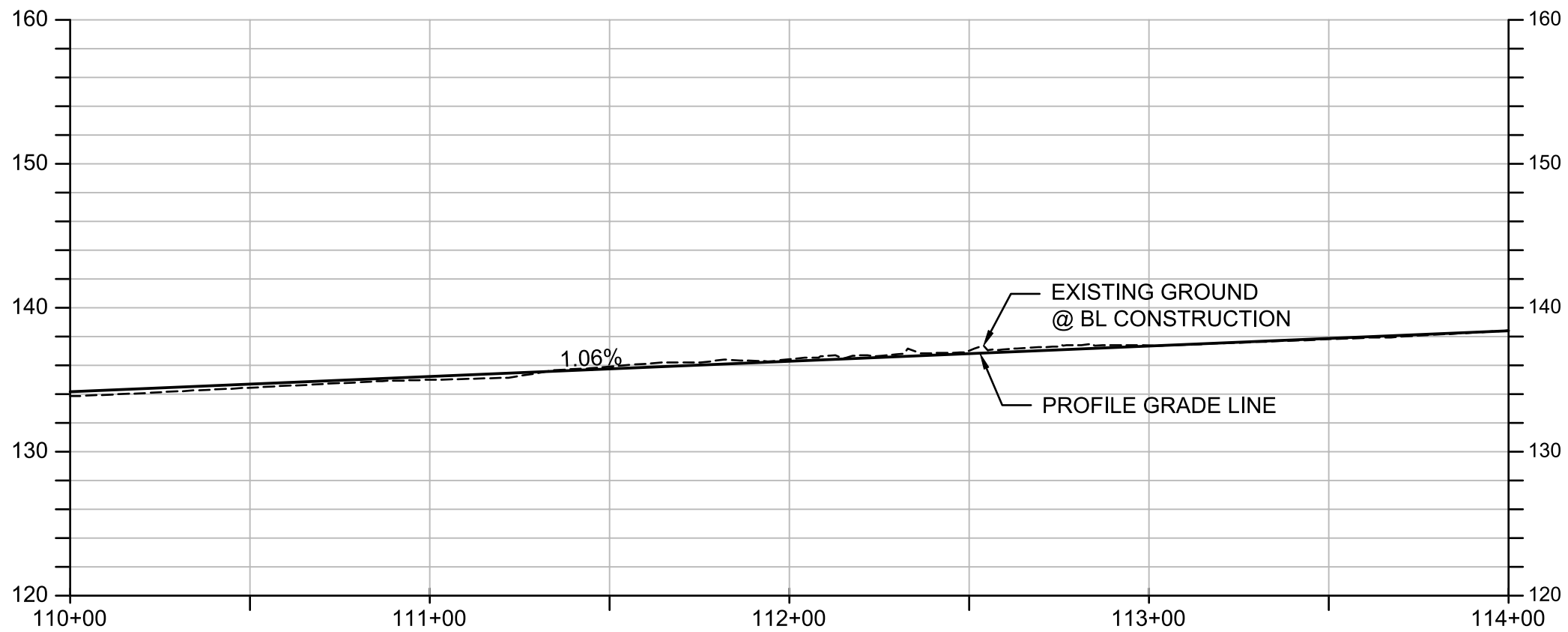
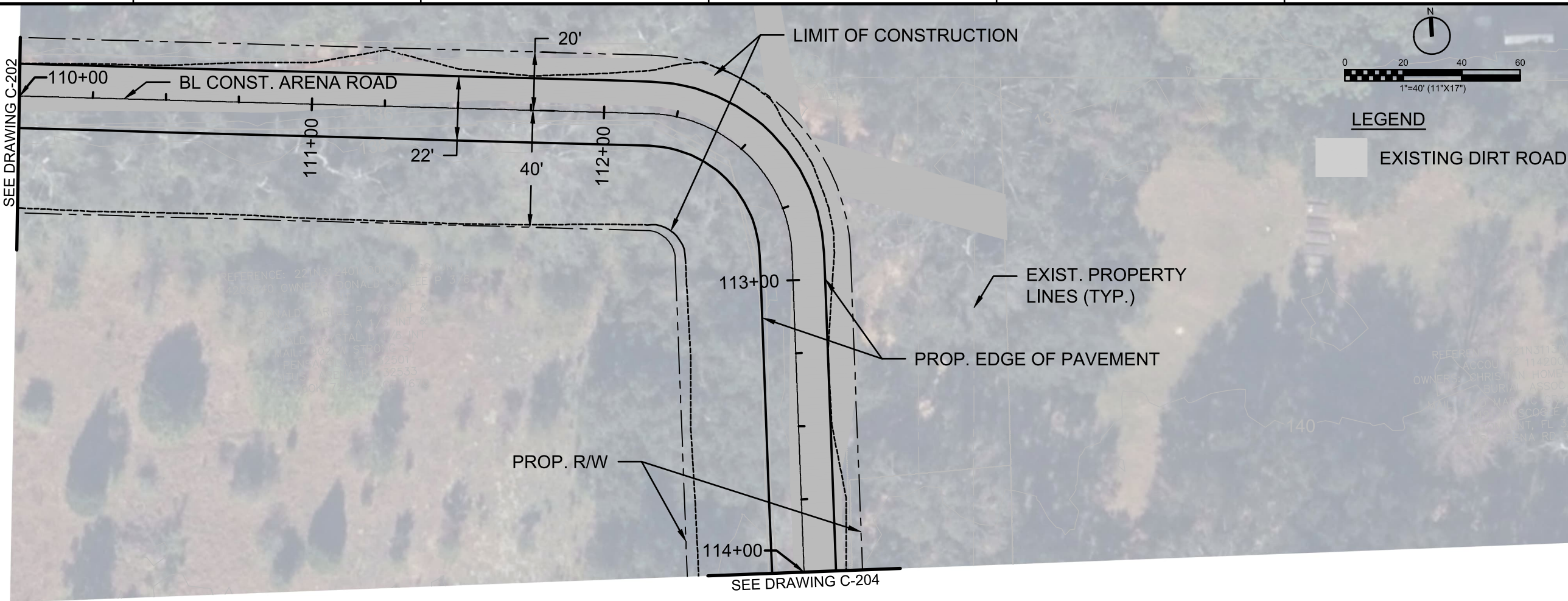
| NO. | DATE | DR | CHK | BY | APVD |
|-----|------|----|-----|----|------|
| | | | | | |
| | | | | | |
| | | | | | |
| | | | | | |
| | | | | | |
| | | | | | |
| | | | | | |
| | | | | | |
| | | | | | |
| | | | | | |
| | | | | | |

ARENA ROAD DIRT ROAD PAVING
BOARD OF COUNTY COMMISSIONERS
ESCAMBIA COUNTY, FLORIDA

Jacobs
CIVIL
PLAN AND PROFILE
STA 105+00 TO STA 110+00

| | |
|--------------------------------------|---------------|
| VERIFY SCALE | |
| BAR IS ONE INCH ON ORIGINAL DRAWING. | |
| DATE | DECEMBER 2022 |
| PROJ | D3598100 |
| DWG | 05-C-202 |
| SHEET | 6 of 11 |

30% DESIGN DOCUMENTS
RE/USE OF DOCUMENTS: THIS DOCUMENT, AND THE IDEAS AND DESIGNS INCORPORATED HEREIN, AS AN INSTRUMENT OF PROFESSIONAL SERVICE, IS THE PROPERTY OF JACOBS AND IS NOT TO BE USED, IN WHOLE OR IN PART, FOR ANY OTHER PROJECT WITHOUT THE WRITTEN AUTHORIZATION OF JACOBS. © JACOBS 2022. ALL RIGHTS RESERVED.



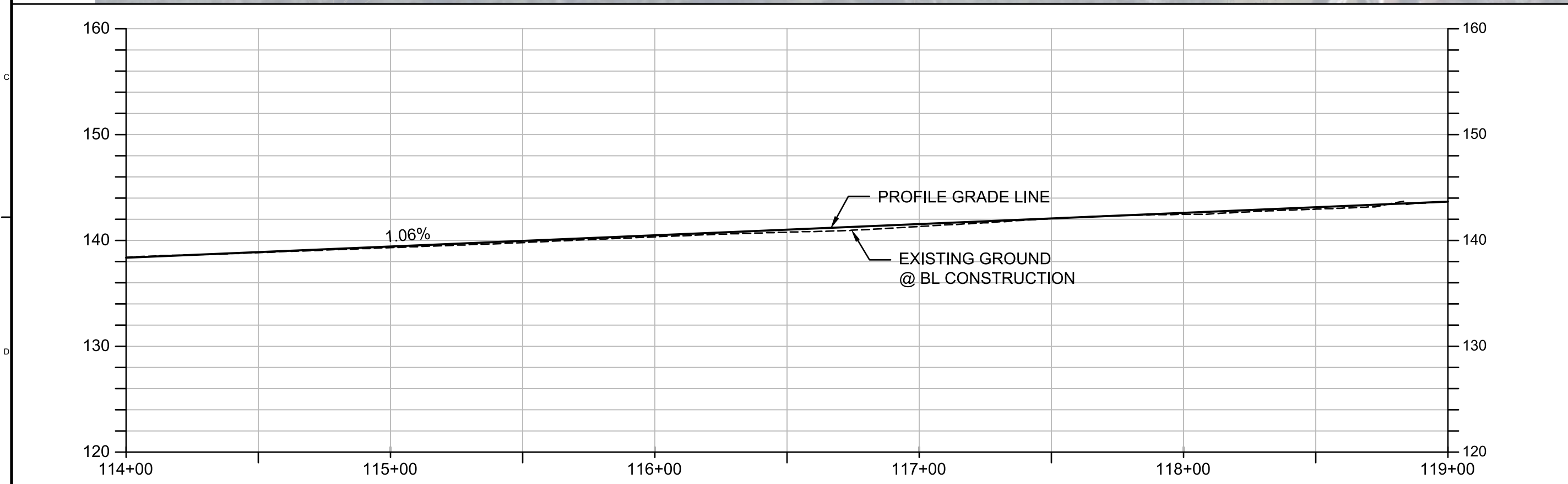
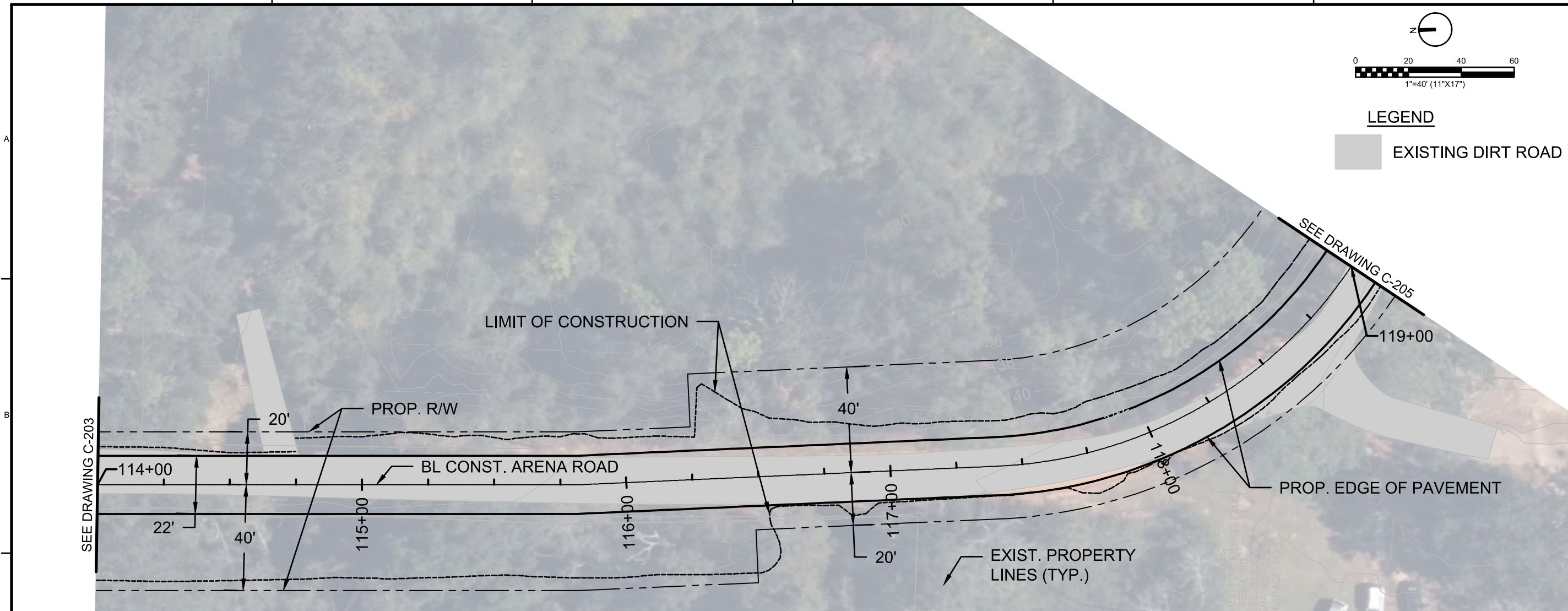
| | | | | | |
|-----|------|----|-----|----|------|
| NO. | DATE | DR | CHK | BY | APVD |
| | | | | | |

ARENA ROAD DIRT ROAD PAVING
 BOARD OF COUNTY COMMISSIONERS
 ESCAMBIA COUNTY, FLORIDA

Jacobs
 CIVIL
 PLAN AND PROFILE
 STA 110+00 TO STA 114+00

| |
|--------------------------------------|
| VERIFY SCALE |
| BAR IS ONE INCH ON ORIGINAL DRAWING. |
| DATE: DECEMBER 2022 |
| PROJ: D3598100 |
| DWG: 05-C-203 |
| SHEET: 7 of 11 |

RE/USE OF DOCUMENTS: THIS DOCUMENT AND THE IDEAS AND DESIGNS INCORPORATED HEREIN, AS AN INSTRUMENT OF PROFESSIONAL SERVICE, IS THE PROPERTY OF JACOBS AND IS NOT TO BE USED, IN WHOLE OR IN PART, FOR ANY OTHER PROJECT WITHOUT THE WRITTEN AUTHORIZATION OF JACOBS.
 © JACOBS 2022. ALL RIGHTS RESERVED.

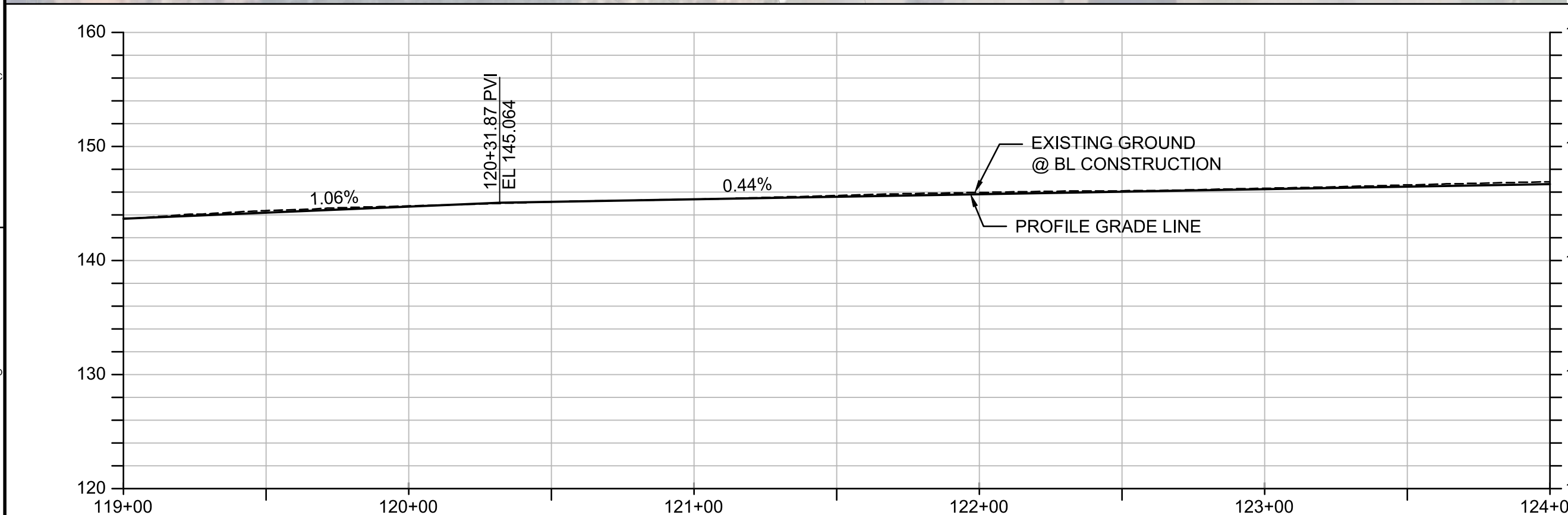
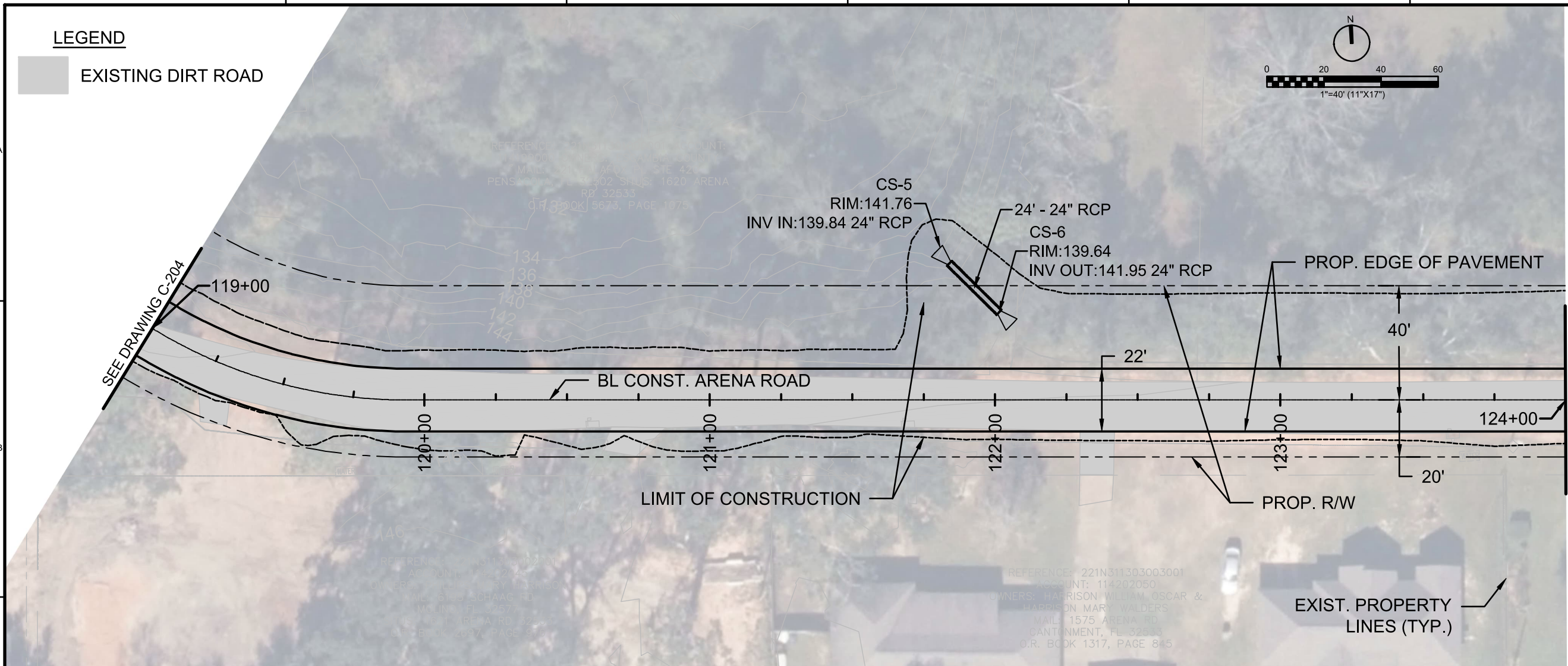
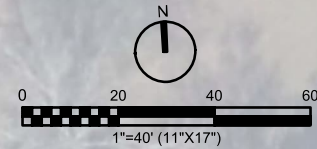


| | | | |
|--|--|--|--|
| | | ARENA ROAD DIRT ROAD PAVING BOARD OF COUNTY COMMISSIONERS ESCAMBIA COUNTY, FLORIDA | |
| CIVIL PLAN AND PROFILE STA 114+00 TO STA 119+00 | | NO. DATE REVISION CHK DR APVD | |
| VERIFY SCALE BAR IS ONE INCH ON ORIGINAL DRAWING. | | DATE DECEMBER 2022 PROJ D3598100 DWG 05-C-204 SHEET 8 of 11 | |

30% DESIGN DOCUMENTS
 REUSE OF DOCUMENTS: THIS DOCUMENT AND THE IDEAS AND DESIGNS INCORPORATED HEREIN, AS AN INSTRUMENT OF PROFESSIONAL SERVICE, IS THE PROPERTY OF JACOBS AND IS NOT TO BE USED, IN WHOLE OR IN PART, FOR ANY OTHER PROJECT WITHOUT THE WRITTEN AUTHORIZATION OF JACOBS. © JACOBS 2022. ALL RIGHTS RESERVED.

LEGEND

EXISTING DIRT ROAD



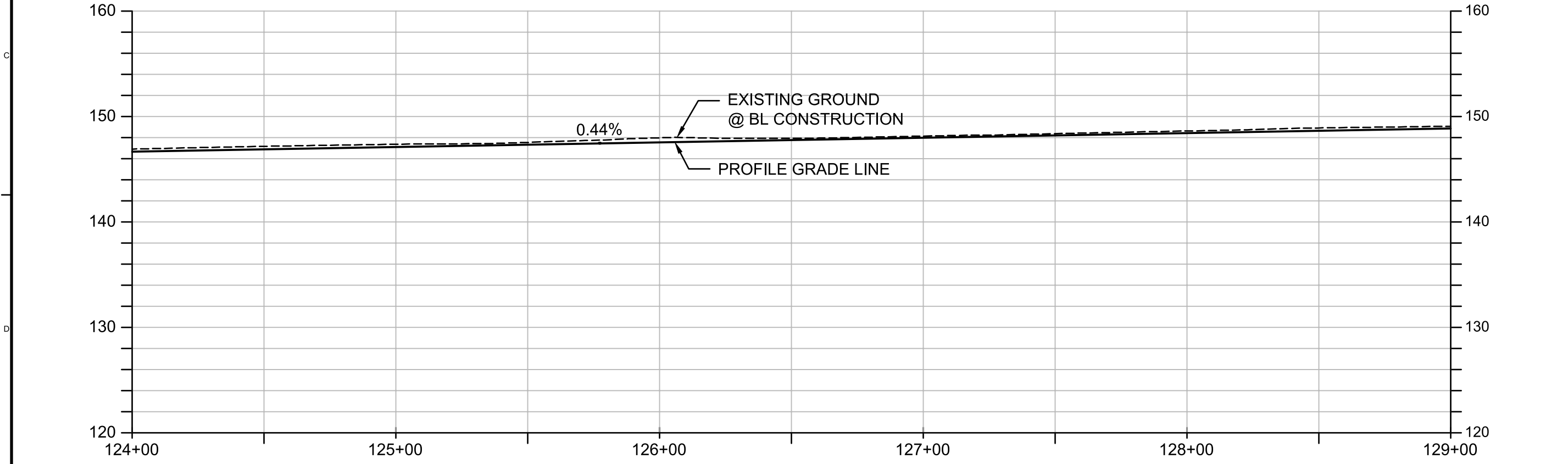
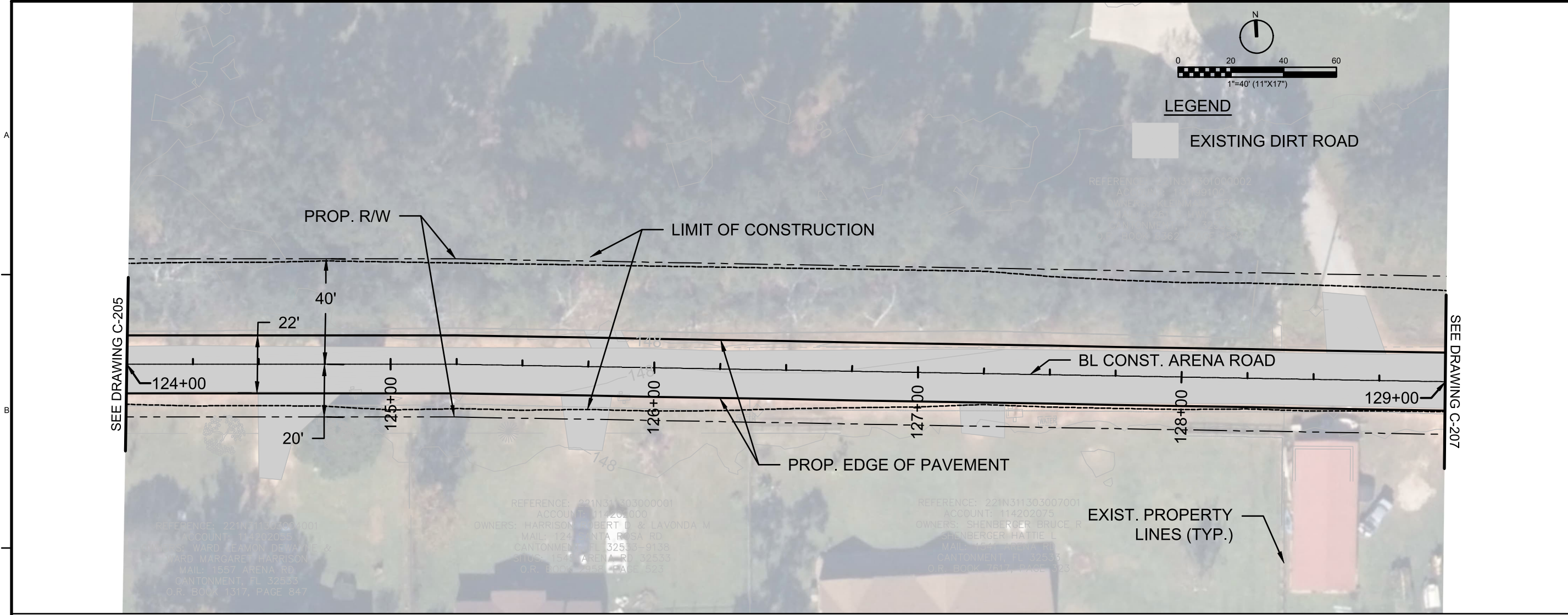
Jacobs
 CIVIL
 ARENA ROAD DIRT ROAD PAVING
 BOARD OF COUNTY COMMISSIONERS
 ESCAMBIA COUNTY, FLORIDA
 PLAN AND PROFILE
 STA 119+00 TO STA 124+00

| | | | | | |
|-----|------|----|-----|----|------|
| NO. | DATE | DR | CHK | BY | APVD |
| | | | | | |

VERIFY SCALE
 BAR IS ONE INCH ON ORIGINAL DRAWING.
 DATE: DECEMBER 2022
 PROJ: D3598100
 DWG: 05-C-205
 SHEET: 9 of 11

REUSE OF DOCUMENTS: THIS DOCUMENT, AND THE IDEAS AND DESIGNS INCORPORATED HEREIN, AS AN INSTRUMENT OF PROFESSIONAL SERVICE, IS THE PROPERTY OF JACOBS AND IS NOT TO BE USED, IN WHOLE OR IN PART, FOR ANY OTHER PROJECT WITHOUT THE WRITTEN AUTHORIZATION OF JACOBS.
 © JACOBS 2022. ALL RIGHTS RESERVED.

30% DESIGN DOCUMENTS



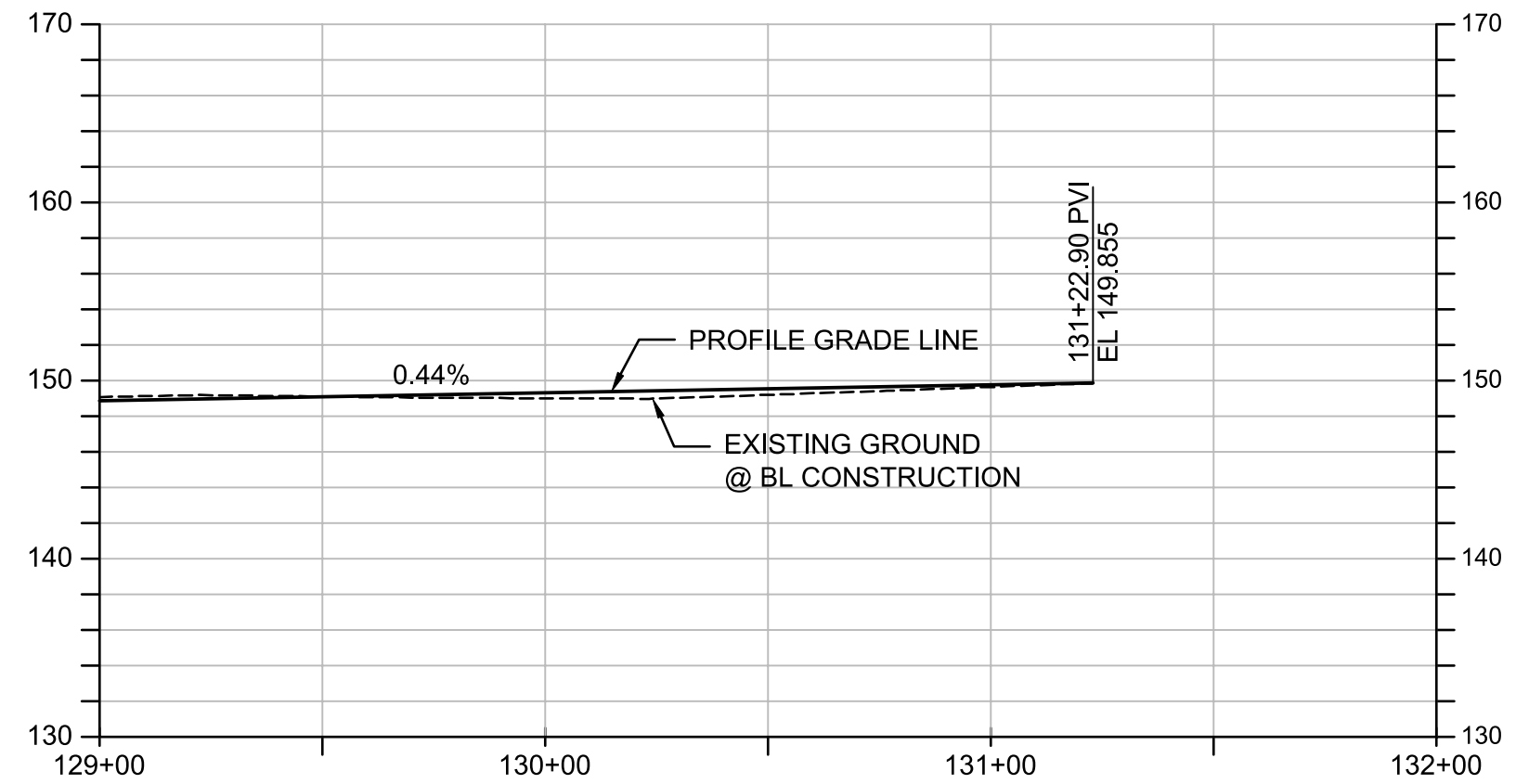
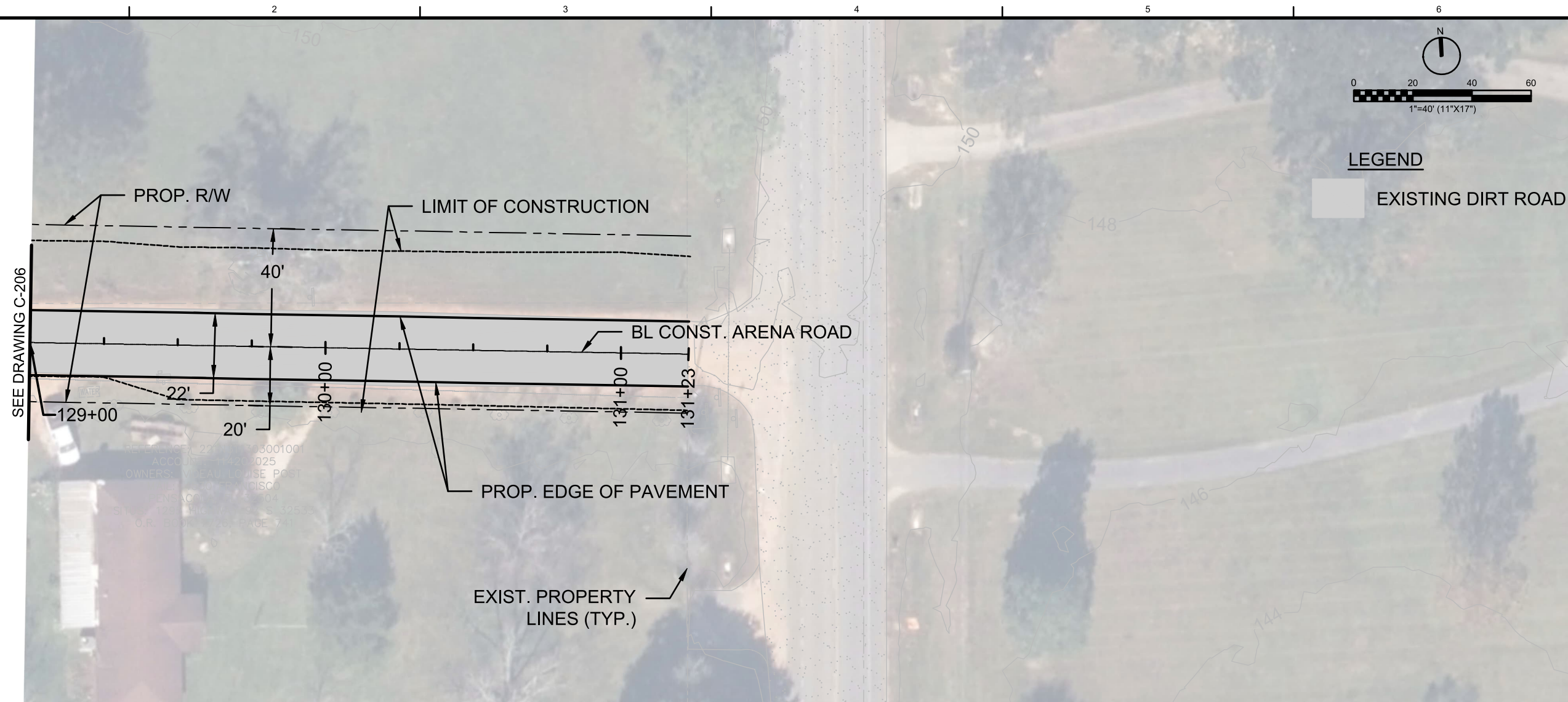
| NO. | DATE | DR | CHK | APVD | BY | APVD |
|-----|------|----|-----|------|----|------|
| | | | | | | |
| | | | | | | |
| | | | | | | |
| | | | | | | |

ARENA ROAD DIRT ROAD PAVING
BOARD OF COUNTY COMMISSIONERS
ESCAMBIA COUNTY, FLORIDA

Jacobs
CIVIL
PLAN AND PROFILE
STA 124+00 TO STA 129+00

| | |
|--------------------------------------|---------------|
| VERIFY SCALE | |
| BAR IS ONE INCH ON ORIGINAL DRAWING. | |
| DATE | DECEMBER 2022 |
| PROJ | D3598100 |
| DWG | 05-C-206 |
| SHEET | 10 of 11 |

30% DESIGN DOCUMENTS
REUSE OF DOCUMENTS: THIS DOCUMENT, AND THE IDEAS AND DESIGNS INCORPORATED HEREIN, AS AN INSTRUMENT OF PROFESSIONAL SERVICE, IS THE PROPERTY OF JACOBS AND IS NOT TO BE USED, IN WHOLE OR IN PART, FOR ANY OTHER PROJECT WITHOUT THE WRITTEN AUTHORIZATION OF JACOBS.
© JACOBS 2022. ALL RIGHTS RESERVED.



| NO. | DATE | REVISION | CHK | DR | BY |
|-----|------|----------|-----|----|----|
| | | | | | |
| | | | | | |
| | | | | | |
| | | | | | |
| | | | | | |
| | | | | | |
| | | | | | |
| | | | | | |
| | | | | | |

ARENA ROAD DIRT ROAD PAVING
 BOARD OF COUNTY COMMISSIONERS
 ESCAMBIA COUNTY, FLORIDA

Jacobs
 CIVIL
 PLAN AND PROFILE
 STA 129+00 TO STA 131+23

| | |
|-------|---------------|
| DATE | DECEMBER 2022 |
| PROJ | D3598100 |
| DWG | 05-C-207 |
| SHEET | 11 of 11 |