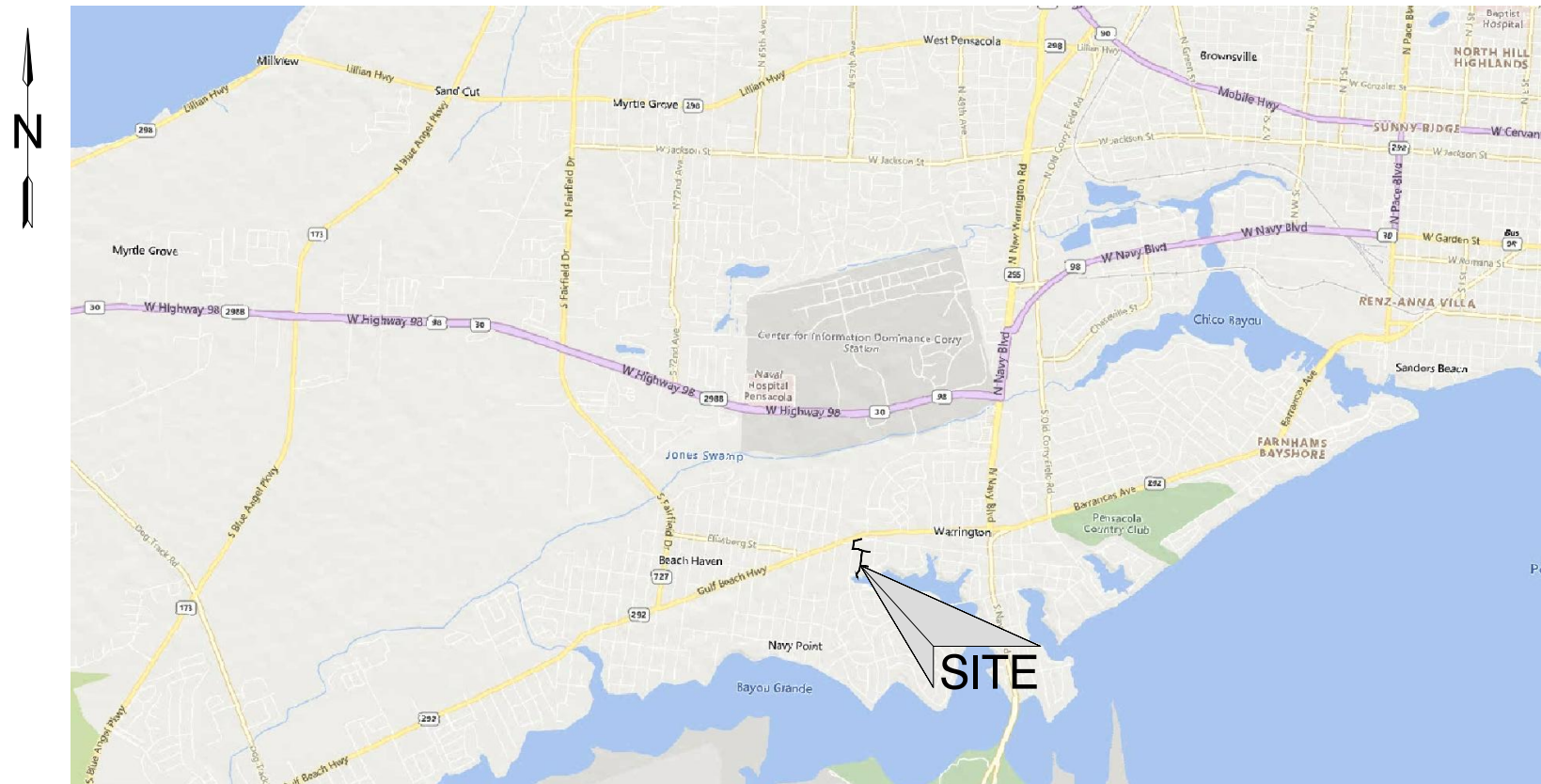


GULF BEACH HIGHWAY DRAINAGE IMPROVEMENTS ESCAMBIA COUNTY

NORTH NAVY POINT



VICINITY MAP
NOT TO SCALE

PROPOSED IMPROVEMENTS

REPLACEMENT OF AN EXISTING STORMWATER OUTFALL

UTILITIES INFORMATION

SEWER/WATER - EMERALD COAST UTILITY AUTHORITY
9255 STURDEVANT ST
PENSACOLA, FL 32514
JACOB KEARLEY
PH: (850) 969-5823

ELECTRIC - FLORIDA POWER & LIGHT
1 ENERGY PLACE
PENSACOLA, FLORIDA 32520
DEREK GILMORE
PH: (850) 777-9476

NATURAL GAS - PENSACOLA ENERGY
222 W. MAIN STREET
PENSACOLA, FL 32502
DIANE MOORE
PH: (850) 474-5319

CABLE - COX COMMUNICATIONS
3405 MCLEMORE ST
PENSACOLA, FL 32514
TROY YOUNG
PH: (850) 232-5044

TELEPHONE - AT&T FLORIDA
5090 N. 9TH AVE.
PENSACOLA, FL 32504
TOM MANNING
PH: (850) 463-5176

CLIENT INFORMATION

ESCAMBIA COUNTY
ENGINEERING DIVISION
3363 WEST PARK PLACE
PENSACOLA, FLORIDA 32505
PHONE: (850) 595-3417

NOTE

USE LATEST ESCAMBIA COUNTY AND/OR
F.D.O.T. TECHNICAL SPECIFICATIONS AND
DETAILS UNLESS OTHERWISE NOTED.

SHEET INDEX

#	SHEET TITLE
G100	COVER SHEET
G101	KEY MAP SHEET
G102	GENERAL NOTES
C100	EROSION CONTROL PLAN SHEET 1
C101	EROSION CONTROL PLAN SHEET 2
C102	PLAN AND PROFILE OPTION 1 SHEET 1
C103	PLAN AND PROFILE OPTION 1 SHEET 2
C104	PLAN AND PROFILE OPTION 1 SHEET 3
C105	PLAN AND PROFILE OPTION 1 SHEET 4
C106	DETAILS

DUTY TO INDEMNIFY

THE CONTRACTOR SHALL DEFEND, INDEMNIFY, KEEP AND SAVE HARMLESS THE OWNER AND ENGINEER AND THEIR RESPECTIVE MEMBERS, REPRESENTATIVES, AGENTS AND EMPLOYEES, IN BOTH INDIVIDUAL AND OFFICIAL CAPACITIES, AGAINST ALL SUITS, CLAIMS, DAMAGES, LOSSES AND EXPENSES, INCLUDING ATTORNEY'S FEES, CAUSED BY, GROWING OUT OF, OR INCIDENTAL TO THE PERFORMANCE OF THE WORK UNDER THE CONTRACT BY THE CONTRACTOR OR ITS SUBCONTRACTORS TO THE FULL EXTENT AS ALLOWED BY THE LAWS OF THE STATE OF FLORIDA AND NOT BEYOND ANY EXTENT WHICH WOULD RENDER THESE PROVISIONS VOID OR UNENFORCEABLE. IN THE EVENT OF ANY SUCH INJURY (INCLUDING DEATH) OR LOSS OR DAMAGE, OR CLAIMS THEREFORE, THE CONTRACTOR SHALL GIVE PROMPT NOTICE TO THE OWNER.

NO.	DATE	DESCRIPTION	BY			
				BRM	BRM	SM
DESIGNED BY	BRM					
DRAWN BY	BRM					
CHECKED BY	SM					
APPROVED BY	SM					

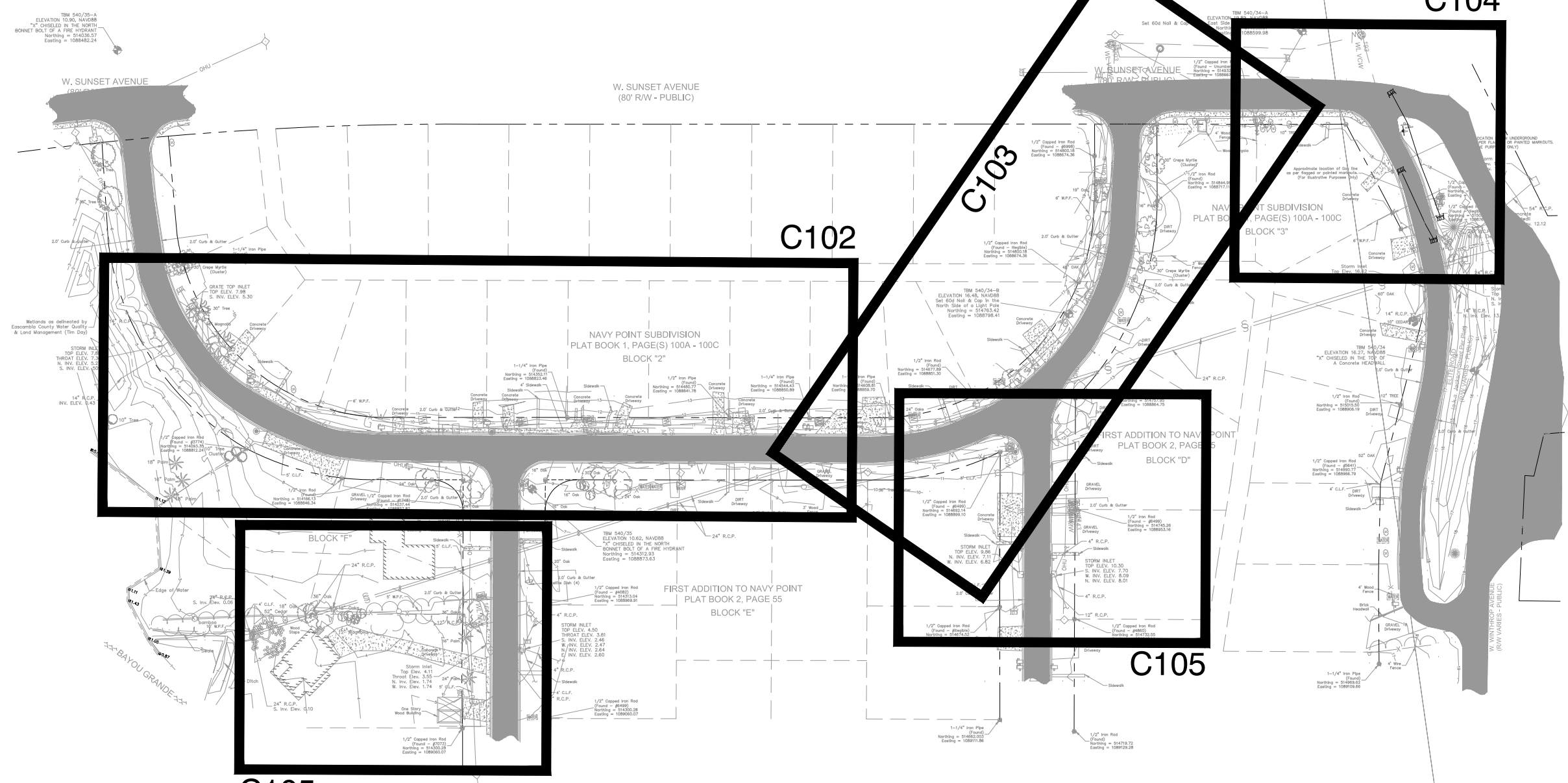
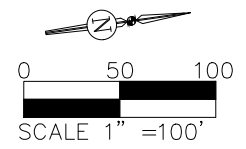
COVER SHEET

GULF BEACH HIGHWAY
DRAINAGE OUTFALL
NAVY POINT FIRST ADDITION
WARRINGTON, FL 32507

DO NOT SCALE THIS DRAWING - DIMENSIONS AND NOTES TAKE PREFERENCE



Florida Engineer # 88721
PROJECT NO.: 21-0659.000
SCALE:
DATE: 05/02/22
DRAWING: G100



C105

C105

C102

C103

C104

REVISIONS	
NO.	DESCRIPTION

DESIGNED BY	BRM
DRAWN BY	BRM
CHECKED BY	SM
APPROVED BY	SM

KEY MAP SHEET

GULF BEACH HIGHWAY
DRAINAGE OUTFALL
NAVY POINT FIRST ADDITION
WARRINGTON, FL 32507

DO NOT SCALE THIS DRAWING - DIMENSIONS AND NOTES TAKE PREFERENCE

DRMP
ENGINEERS • SURVEYORS • PLANNERS • SCIENTISTS

Certificate of Authorization No. 2648
700 SOUTH PALM AVE, SUITE 160
PENSACOLA, FL 32502
Phone: 850.469.9077 WWW.DRMP.COM

Florida Engineer # 88721
PROJECT NO.: 21-0659.000
SCALE:
DATE: 05/02/22
DRAWING: G101

GENERAL NOTES:

1. ALL CONDITIONS AND STIPULATIONS OF THE CONSTRUCTION PERMITS AND THE APPROVALS ISSUED BY THE ESCAMBIA COUNTY ENGINEER SHALL BE COMPLIED WITH IN EVERY DETAIL.
2. ALL ROADS DAMAGED BY CONSTRUCTION OPERATIONS ARE TO BE PATCHED OR RECONSTRUCTED AS DIRECTED BY THE COUNTY ENGINEER OR DESIGNEE.
3. THE CONTRACTOR SHALL TAKE STEPS NECESSARY TO PREVENT EROSION AND ANY OFF SITE SEDIMENT TRANSPORT RESULTING FROM INCREASED RUNOFF DURING CONSTRUCTION BY PROVIDING SILT FENCE AND/OR STAKED HAY BALES AS REQUIRED BY FDOT, THE FLORIDA STORMWATER, EROSION, AND SEDIMENT CONTROL INSPECTOR'S MANUAL, 2000 EDITION, OR AS INDICATED ON THE PLANS. ALL EROSION CONTROL MEASURES SHALL REMAIN IN PLACE UNTIL ASSOCIATED DISTURBED AREAS ARE STABILIZED AS TO REDUCE SEDIMENT RUNOFF, UNLESS OTHERWISE DIRECTED BY THE ENGINEER OR DESIGNEE.
4. COMPLIANCE OF NECESSARY PERMITS WILL BE THE RESPONSIBILITY OF THE CONTRACTOR.
5. THE CONTRACTOR IS CAUTIONED TO VISIT THE SITE AND FAMILIARIZE THEMSELVES WITH THE PROJECT PRIOR TO BIDDING AND/OR CONSTRUCTION.
6. IT SHALL BE THE CONTRACTORS RESPONSIBILITY TO PRESERVE OR RELOCATE ALL BENCHMARKS (VERTICAL CONTROL) AS NEEDED DURING CONSTRUCTION. ALL PUBLIC OR PRIVATE CORNER MONUMENTATION SHALL BE PROTECTED. IF A PUBLIC OR PRIVATE CORNER MONUMENTATION IS IN DANGER OF BEING DESTROYED AND HAS NOT BEEN PROPERLY REFERENCED, THE CONTRACTOR SHALL NOTIFY THE ENGINEER OR DESIGNEE IMMEDIATELY. ANY ESCAMBIA COUNTY HARN/GPS NETWORK MONUMENTS OR BUREAU OF SURVEY AND MAPPING GPS NETWORK MONUMENTS WITHIN THE LIMITS OF CONSTRUCTION SHALL BE PROTECTED. IF A HARN/GPS NETWORK MONUMENTS OR BUREAU OF SURVEY AND MAPPING GPS NETWORK MONUMENTS ARE DISTURBED OR DESTROYED THE CONTRACTOR SHALL BE RESPONSIBLE FOR RELACEMENT OF THE MONUMENTS AND HAVE THE MONUMENTS POSITION DETERMINED BY A FLORIDA LICENSED PROFESSIONAL SURVEYOR AND MAPPER USING GUIDELINES AS ESTABLISHED BY NATIONAL GEODETIC SURVEY FOR BLUE BOOKING AND APPROVAL.
7. EXISTING DRAINAGE FEATURES WITHIN CONSTRUCTION LIMITS SHALL REMAIN UNLESS OTHERWISE NOTED.
8. THE CONTRACTOR SHALL MATCH EXISTING CONDITIONS AT THE BEGINNING AND END OF CONSTRUCTION AS DIRECTED BY THE COUNTY ENGINEER OR DESIGNEE.
9. EXISTING STREETS AND DRIVES SHALL BE MAINTAINED TO LOCAL TRAFFIC AND PROPERTY OWNERS.
10. ALL ROADWAY CONSTRUCTION SHALL COMPLY WITH THE ESCAMBIA COUNTY TECHNICAL SPECIFICATIONS, LATEST EDITION.
11. ALL MATERIALS, TESTING AND CONSTRUCTION METHODS SHALL CONFORM TO THE ESCAMBIA COUNTY TECHNICAL SPECIFICATIONS, LATEST EDITION.
12. ANY REFERENCE TO FDOT STANDARD SPECIFICATIONS FOR ROAD AND BRIDGE CONSTRUCTION, LATEST EDITION, DIVISION 1, GENERAL REQUIREMENTS AND COVENANTS, SHALL BE EXCLUDED AND NOT APPLICABLE TO ANY SPECIFICATION REFERRED HEREIN OR OTHERWISE LISTED IN THESE PLANS OR RELATED DOCUMENTS OR THE ESCAMBIA COUNTY TECHNICAL SPECIFICATIONS.
13. EXISTING STREET AND ROAD NAME SIGNS ON THE PROJECT SHALL BE KEPT VISIBLE AT ALL TIMES FOR THE FACILITATION OF ACCESS BY EMERGENCY VEHICLES. ALL OTHER EXISTING SIGNS THAT CONFLICT WITH CONSTRUCTION OPERATIONS SHALL BE TAKEN DOWN AND STOCKPILED WITHIN THE R/W LIMITS BY THE CONTRACTOR AS DIRECTED BY THE COUNTY ENGINEER OR DESIGNEE. ANY EXISTING SIGNS THAT ARE TO BE RELOCATED AND ARE DAMAGED BEYOND USE BY THE CONTRACTOR SHALL BE REPLACED BY THE CONTRACTOR AT HIS EXPENSE.
14. THE CONTRACTOR SHALL MAINTAIN AT LEAST ONE 10' OPEN LANE AT ALL TIMES. NO OPEN EXCAVATION SHALL REMAIN OVER NIGHT. CONTRACTOR SHALL RESTORE ROAD TO TWO LANES OF TRAFFIC AT THE END OF EACH WORK DAY.
15. CONTRACTOR SHALL COMPLY WITH ALL LOCAL, STATE, AND FEDERAL REQUIREMENTS.
16. ONLY ACCESS TO THE ROAD R/W AS SHOWN IS GUARANTEED BY THE COUNTY. PRIVATE R/W REQUIRED BY THE CONTRACTOR TO FACILITATE CONSTRUCTION SHALL BE ACQUIRED BY THE CONTRACTOR WITH NO ADDITIONAL COMPENSATION OR ASSISTANCE FROM THE COUNTY.
17. VEGETATION ON R/W AND EASEMENTS SHALL BE RESTORED TO ORIGINAL CONDITION UNLESS OTHERWISE NOTED ON THE PLAN SHEETS. COST OF SAID RESTORATION SHALL BE CONSIDERED INCIDENTAL TO OTHER PAY ITEMS.
18. GRADED AGGREGATE BASE SHALL BE REQUIRED FOR ROADWAYS UNLESS OTHERWISE SHOWN.
19. ALL TREES WITHIN LIMITS OF CONSTRUCTION SHALL REMAIN UNLESS OTHERWISE NOTED IN PLANS. REMOVAL OF ANY TREES OR SHRUBS SHALL BE COORDINATED WITH HOME OWNER PRIOR TO REMOVAL. ALL PROPOSED SOD SHALL MATCH EXISTING TYPE.
20. ALL COMPACTED FILL SHALL BE PLACED IN LAYERS OR LIFTS NOT MORE THAN 12" IN LOOSE DEPTH FOR MATERIAL COMPACTED BY HEAVY COMPACTION EQUIPMENT, AND NOT MORE THAN 8" IN LOOSE DEPTH FOR MATERIAL COMPACTED BY HAND-OPERATED TAMPERS.
21. MAINTENANCE OF TRAFFIC AS PER FDOT.
22. ALL SPEED BUMPS THAT ARE DISTURBED DURING CONSTRUCTION SHALL BE REPLACED TO THE LATEST ESCAMBIA COUNTY DESIGN SPECIFICATIONS. ALL COSTS FOR REPLACEMENT OF SAID SPEED BUMPS SHALL BE INCIDENTAL TO OTHER ITEMS AND NO ADDITIONAL COMPENSATION SHALL BE CONSIDERED.
23. ALL EXISTING MAILBOXES SHALL BE REPLACED BY THE CONTRACTOR IN ACCORDANCE WITH POSTAL REQUIREMENTS AND IN ACCORDANCE WITH ESCAMBIA COUNTY TECHNICAL SPECIFICATION. FDOT DESIGN STANDARDS AND UNITED POSTAL REQUIREMENTS. ALL EXISTING BRICK MAILBOXES WITHIN LIMITS OF CONSTRUCTION OR COUNTY RIGHT OF WAY SHALL BE CAREFULLY REMOVED AND PRESERVED PRIOR TO CONSTRUCTION AND REPLACED IN ORIGINAL LOCATION AFTER CONSTRUCTION IS COMPLETE.
24. THE CONTRACTOR SHALL, AT A MINIMUM, MATCH EXISTING SIGNING AND PAVEMENT MARKINGS. ALL SIGNING AND PAVEMENT MARKINGS SHALL BE PLACED IN ACCORDANCE WITH THE LATEST FDOT DESIGN STANDARDS. THE CONTRACTOR SHALL CONTACT THE COUNTY TRAFFIC DEPARTMENT PRIOR TO INSTALLATION OF ANY SIGNING AND PAVEMENT MARKINGS.
25. WHERE UNSUITABLE MATERIAL, AS DEFINED BY THE COUNTY SPECIFICATIONS SECTION 02300, 1.3(I), IS ENCOUNTERED IN THE AREAS PROPOSED FOR PAVING, THE CONTRACTOR SHALL IMMEDIATELY NOTIFY THE COUNTY ENGINEER OR DESIGNEE PRIOR TO ANY EXCAVATION.
26. PIPE LENGTHS SHOWN IN THE PLANS DO NOT INCLUDE THE LENGTH OF PIPE THAT MUST BE INSTALLED WITH THE MITERED END SECTION. THEREFORE, ALL PIPES LENGTHS ASSOCIATED WITH MITERED END SECTIONS SHALL BE PAID FOR IN THE UNIT COST OF THE MITERED END SECTION.
27. IF ARCHAEOLOGICAL MATERIAL/PREHISTORIC ARTIFACTS SUCH AS POTTERY OR CERAMICS, STONE TOOLS OR METAL IMPLEMENTS, OR ANY OTHER PHYSICAL REMAINS THAT COULD BE ASSOCIATED WITH NATIVE AMERICAN CULTURES, OR EARLY COLONIAL OR AMERICAN SETTLEMENT ARE ENCOUNTERED AT ANY TIME, THE PROJECT SHOULD CEASE ALL ACTIVITIES INVOLVING SUBSURFACE DISTURBANCE IN THE IMMEDIATE VICINITY OF SUCH DISCOVERIES. THE APPLICANT/RECIPIENT, OR OTHER DESIGNEE, SHOULD CONTACT THE FLORIDA DEPARTMENT OF STATE, DIVISION OF HISTORICAL RESOURCES, THE STATE HISTORIC PRESERVATION OFFICER (SHPO) AND THE DSH/FEMA REGION IV ENVIRONMENTAL OFFICER AND FDEM STATE ENVIRONMENTAL LIAISON OFFICER FOR FURTHER GUIDANCE. PROJECT ACTIVITIES SHOULD NOT RESUME WITHOUT VERBAL AND/OR WRITTEN AUTHORIZATION FROM THE DIVISION OF HISTORICAL RESOURCES.
28. IN THE EVENT THAT UNMARKED HUMAN REMAINS ARE ENCOUNTERED DURING PERMITTED ACTIVITIES, ALL WORK MUST STOP IMMEDIATELY AND THE PROPER AUTHORITIES NOTIFIED IN ACCORDANCE WITH F.S. 872.05.
29. CONTRACTOR SHALL MAINTAIN RECORD DRAWINGS DURING CONSTRUCTION WHICH SHOW "AS-BUILT" CONDITIONS OF ALL WORK INCLUDING PIPING, DRAINAGE STRUCTURES, TOPO OF POND(S), OUTLET STRUCTURES, DIMENSIONS, ELEVATIONS, GRADING, ETC. RECORD DRAWINGS SHALL BE PROVIDED TO THE ENGINEER OF RECORD PRIOR TO REQUESTING FINAL INSPECTION.
30. CONTRACTOR SHALL OBTAIN COUNTY APPROVED CHANGE ORDER PRIOR TO PERFORMING ANY ADDITIONAL WORK.
31. ANY DAMAGE TO EXISTING ROADS DURING CONSTRUCTION WILL BE REPAIRED BY THE DEVELOPER PRIOR TO FINAL "AS-BUILT" SIGN OFF FROM THE COUNTY.
32. THE PROJECT ENGINEER (ENGINEER OF RECORD) SHALL PROVIDE TO ESCAMBIA COUNTY (DRC) "AS-BUILT" RECORD DRAWINGS FOR VERIFICATION AND APPROVAL BY ESCAMBIA COUNTY ONE WEEK PRIOR TO REQUESTING A FINAL INSPECTION AND ACCEPTANCE, OR PROVIDE "AS-BUILT" CERTIFICATION THAT THE PROJECT CONSTRUCTION ADHERES TO THE PERMITTED PLANS AND SPECIFICATIONS. THE "AS-BUILT" CERTIFICATION OR THE "AS-BUILT" RECORD DRAWINGS MUST BE SIGNED, SEALED AND DATED BY A REGISTERED FLORIDA PROFESSIONAL ENGINEER.
33. ALL SIDEWALKS, SHARED PATH WALKWAYS, AND CURB RAMPS ARE TO BE BUILT TO ADA STANDARDS USING THE LATEST EDITION OF THE DESIGN STANDARDS PARK ADA REQUIREMENTS AND PUBLIC RIGHTS OF WAY ACCESSIBILITY GUIDELINES (PROWAG).
34. THE OWNER OR HIS AGENT SHALL ARRANGE/SCHEDULE WITH THE COUNTY A FINAL INSPECTION OF THE DEVELOPMENT UPON COMPLETION AND ANY INTERMEDIATE INSPECTIONS AT (850)595-3472. AS-BUILT CERTIFICATION IS REQUIRED PRIOR TO REQUEST FOR FINAL INSPECTION/ APPROVAL.
35. CONTRACTOR TO MAINTAIN ONE LANE OF TRAFFIC AT ALL TIMES PER FDOT STANDARD PLANS LETEST EDITION, OR AS DIRECTED BY THE PROJECT ENGINEER.

UTILITY NOTES:

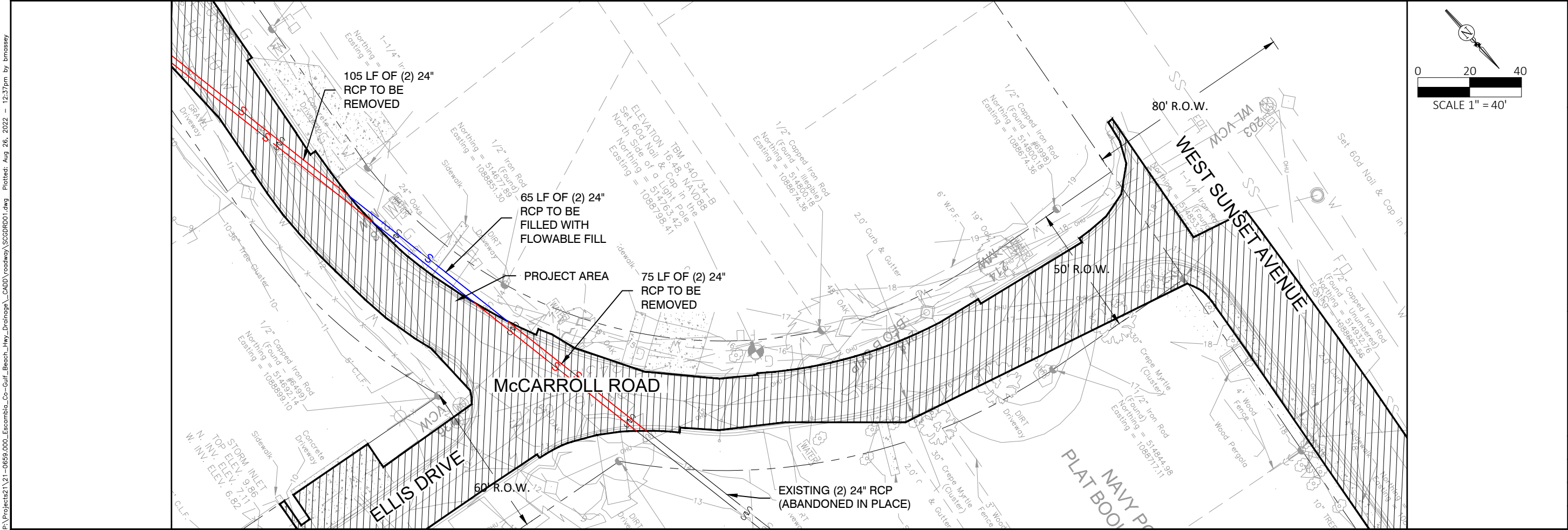
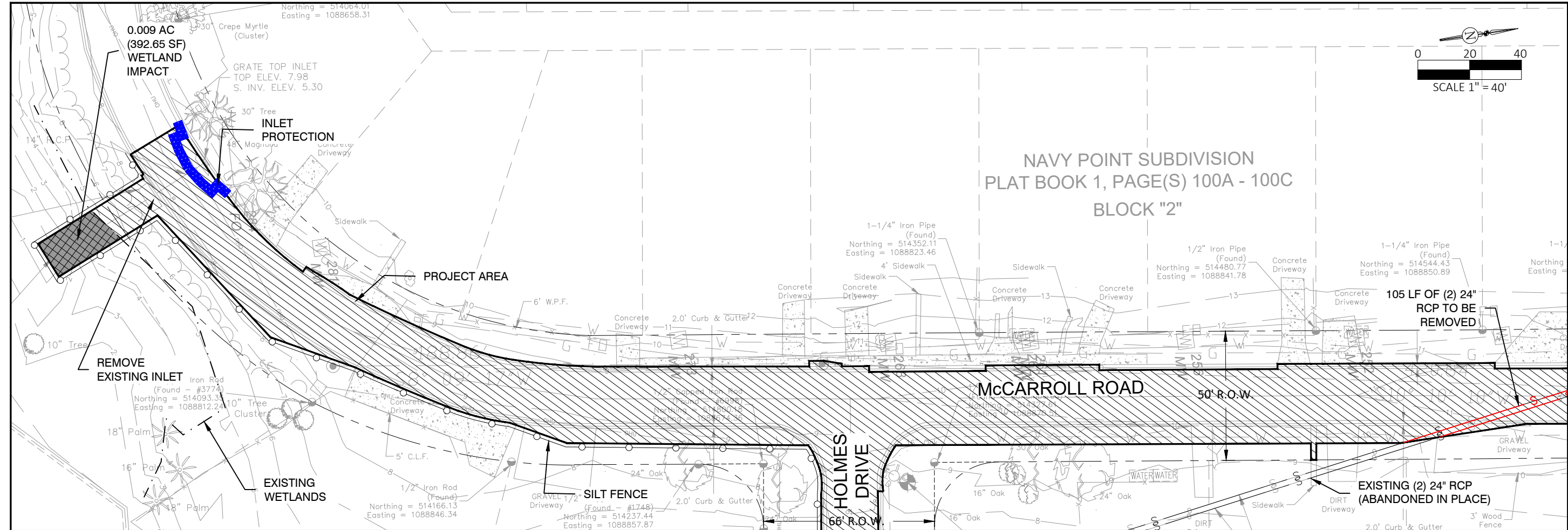
1. THE LOCATION SHOWN FOR EXISTING UNDERGROUND UTILITIES IS APPROXIMATE. THE CONTRACTOR SHALL DETERMINE THE EXACT LOCATION OF ALL EXISTING UTILITIES BEFORE COMMENCING WORK IN EACH AREA. THE CONTRACTOR AGREES TO BE COMPLETELY RESPONSIBLE FOR ALL DAMAGES WHICH MIGHT OCCUR BY HIS FAILURE TO EXACTLY LOCATE AND PRESERVE ALL UTILITIES.
2. UTILITY OWNERS SHALL BE NOTIFIED AT LEAST 48 HOURS PRIOR TO ANY CONSTRUCTION SO THAT THE UTILITY OWNER CAN SPOT VERIFY AND/OR EXPOSE THEIR UTILITIES. KNOWN UTILITIES OWNERS INCLUDE:

SEWER/WATER - EMERALD COAST UTILITY AUTHORITY 9255 STURDEVANT ST PENSACOLA, FL 32514 JACOB KEARLEY PH: (850) 969-5823	ELECTRIC - FLORIDA POWER & LIGHT 1 ENERGY PLACE PENSACOLA, FLORIDA, 32520 DEREK GILMORE PH: (850) 777-9476
NATURAL GAS - PENSACOLA ENERGY 222 W. MAIN STREET PENSACOLA, FL. 32502 DIANE MOORE PH: (850) 474-5319	CABLE - COX COMMUNICATIONS 3405 MCLEMURE ST PENSACOLA, FL. 32514 TROY YOUNG PH: (850) 232-5044
TELEPHONE - AT&T FLORIDA 5090 N. 9TH AVE. PENSACOLA, FL. 32504 TOM MANNING PH: (850) 463-5176	SUNSHINE STATE ONE-CALL 7200 LAKE ELLENOR DRIVE, SUITE 200 ORLANDO, FL. 32809 PH: (800) 432-4770
TRAFFIC DEPARTMENT - ESCAMBIA COUNTY PUBLIC WORKS 3363 WEST PARK PLACE PENSACOLA, FL. 32505 PH:(850) 595-3404	
3. AT&T FLORIDA WILL COMPLETE ALL WORK DURING THE HOURS OF 7:30 AM - 4:30 PM, MONDAY THRU FRIDAY. NO NIGHT OR WEEKEND WORKWORK.
4. ALL CABLE DAMAGE MUST BE REPORTED TO THE ATT FLORIDA REPAIR SERVICE DEPARTMENT AT 611 FROM A LAND LINE OR 877-737-2478 IF USING A CELL PHONE.
5. ALL LOOP DETECTOR INSTALLATION SHALL BE DONE AS PER FDOT INDEX 17781.
6. CONTRACTOR IS TO USE CAUTION WHEN WORKING IN OR AROUND AREAS OF OVERHEAD TRANSMISSION LINES AND UNDERGROUND UTILITIES.
7. UTILITIES TO REMAIN AND BE PROTECTED DURING CONSTRUCTION. NECESSARY REPAIRS SHALL BE CONSIDERED INCIDENTAL TO OTHER PAY ITEMS AND SHALL BE TO THE SATISFACTION OF UTILITY OWNERS.
8. MOST IF NOT ALL OF ECUA'S WATER METERS, VALVE BOXES, AND SEWER MANHOLES ARE DEPICTED ON PLANS.
9. CONTRACTOR SHALL CALL SSOFCO FOR LOCATES (DIG TICKET). PLACE IN NOTES SECTION OF LOCATE REQUEST THAT LOCATES ARE FOR A SIDEWALK PROJECT AND THAT ONLY WATER METERS, VALVES, AND MANHOLES ALONG THE APPROXIMATE PATH OF PROPOSED SIDEWALK REQUIRE LOCATES.
10. AT LEAST 1 WEEK PRIOR TO SIDEWALK CONSTRUCTION, CONTRACTOR SHALL CONTACT ECUA'S REGIONAL SUPERVISOR MIKE LAMBERT (698-4613) TO COMMUNICATE THE NUMBER AND LOCATION OF METERSREQUIRING RELOCATION AND VALVE BOXES REQUIRING ADJUSTMENT. IF MANHOLES REQUIRE ADJUSTMENT, CONTRACTOR SHALL ALSO CONTACT ECUA'S MANHOLE COORDINATOR, EDDIE CARTER (698-9272) TO COMMUNICATE THE NUMBER AND LOCATION OF MANHOLES REQUIRING ADJUSTMENT.
11. ON METER RELOCATIONS, CTS COUPLINGS WITH INSERTS CAN BE USED ON WATER SERVICE TUBING UNDER SIDEWALKS AND GRASS, BUT NOT UNDER PAVEMENT. CONTRACTOR SHALL DISCUSS ANY ADDITIONAL TECHNICAL REQUIREMENTS OF THE REQUIRED WORK ON ECUA FACILITIES WITH THE APPROPRIATE PERSONS LISTED IN NOTE 3.
12. UPON COMPLETION OF ALL WORK ON ECUA FACILITIES, CONTRACTOR SHALL CONTACT ECUA PERSONNEL IN NOTE 3 AND INQUIRE FROM THE ECUA PERSONNEL ABOUT POTENTIAL INSPECTIONS OF THE RELOCATIONS AND/OR ADJUSTMENTS AND SHALL CORRECT ANY DEFICIENCIES AS NOTED DURING INSPECTIONS WITHIN ONE WEEK OF INSPECTIONS.

STORMWATER NOTES:

1. NO DEVIATIONS OR REVISIONS FROM THESE PLANS BY THE CONTRACTOR SHALL BE ALLOWED WITHOUT PRIOR APPROVAL FROM THE ESCAMBIA COUNTY. ANY DEVIATIONS MAY RESULT IN DELAYS IN OBTAINING A CERTIFICATE OF OCCUPANCY.
2. RETENTION/DETENTION AREAS SHALL BE SUBSTANTIALLY COMPLETE PRIOR TO ANY CONSTRUCTION ACTIVITIES THAT MAY INCREASE STORMWATER RUNOFF RATES. THE CONTRACTOR SHALL CONTROL STORMWATER DURING ALL PHASES OF CONSTRUCTION AND TAKE ADEQUATE MEASURES TO PREVENT THE EXCAVATED POND FROM BLINDING DUE TO SEDIMENTS.
3. ALL DISTURBED AREAS WHICH ARE NOT PAVED SHALL BE STABILIZED WITH SEEDING, FERTILIZER AND MULCH, HYDROSEED AND/OR SOD.
4. DEVELOPER/CONTRACTOR SHALL RESHAPE PER PLAN SPECIFICATIONS, CLEAN OUT ACCUMULATED SILT, AND STABILIZE RETENTION/DETENTION POND AT THE END OF CONSTRUCTION WHEN ALL DISTURBED AREAS HAVE BEEN STABILIZED AND PRIOR TO REQUEST FOR INSPECTION.
5. ALL ASPECTS OF THE STORMWATER/DRAINAGE COMPONENTS AND/OR TRANSPORTATION COMPONENTS SHALL BE COMPLETED PRIOR TO CONSTRUCTION.

R E V I S I O N S	BY								
GENERAL NOTES									
GULF BEACH HIGHWAY DRAINAGE OUTFALL NAVY POINT FIRST ADDITION WARRINGTON, FL 32507 DO NOT SCALE THIS DRAWING - DIMENSIONS AND NOTES TAKE PREFERENCE									
DRMP ENGINEERS • SURVEYORS • PLANNERS • SCIENTISTS Certificate of Authorization No. 2648 700 SOUTH PAL AFOX STREET, SUITE 160 PENSACOLA, FL 32502 Phone: 850.469.9077 WWW.DRMP.COM									
Florida Engineer # 88721 PROJECT NO.: 21-0659.000 SCALE: DATE: 05/02/22 DRAWING: G102									



NO.	DATE	DESCRIPTION	BY

DESIGNED BY	DRAWN BY	CHECKED BY	APPROVED BY
BRM	BRM	SM	SM

EROSION CONTROL PLAN SHEET 1

GULF BEACH HIGHWAY DRAINAGE OUTFALL

NAVY POINT FIRST ADDITION
WARRINGTON, FL 32507

DO NOT SCALE THIS DRAWING - DIMENSIONS AND NOTES TAKE PREFERENCE

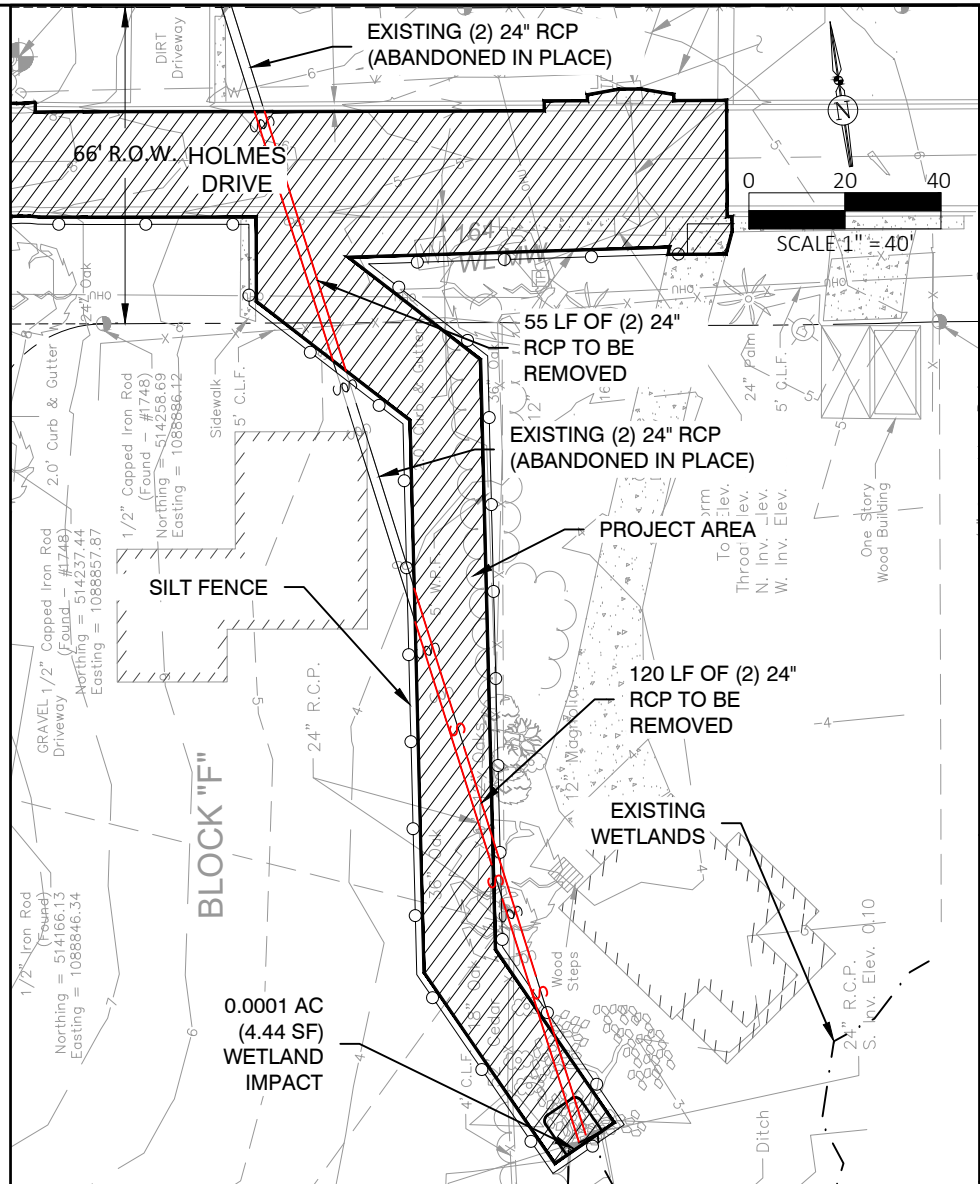
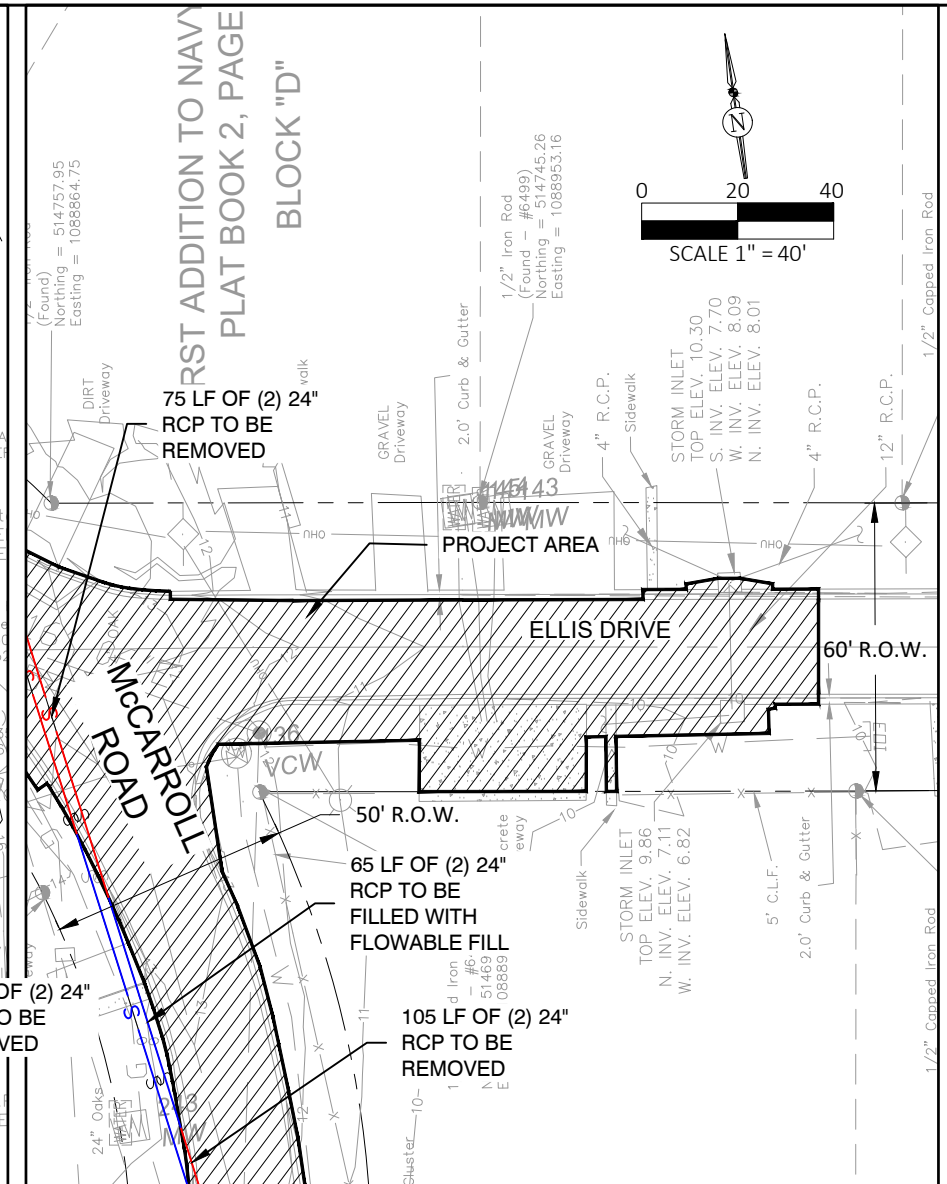
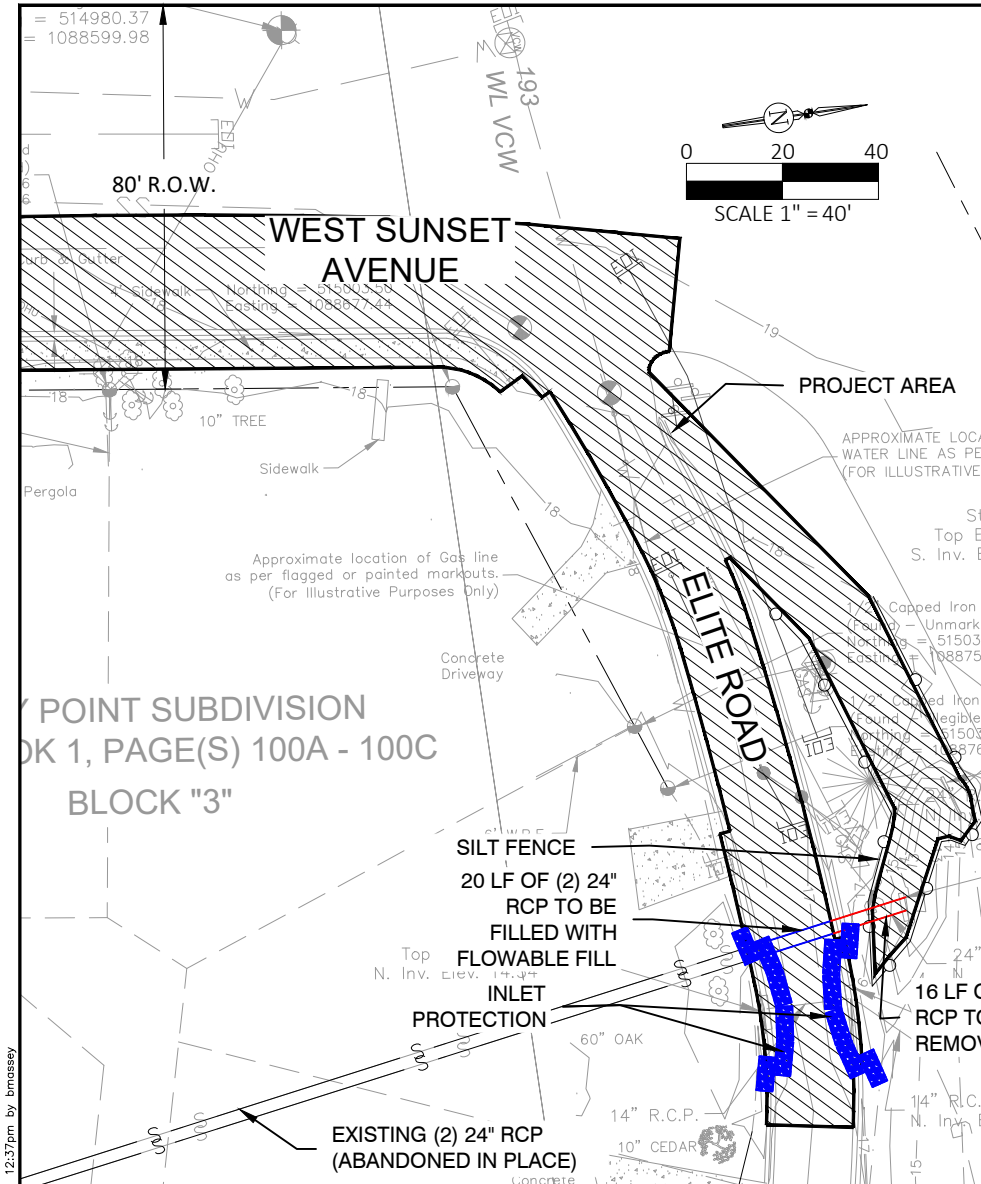


DRMP
ENGINEERS • SURVEYORS • PLANNERS • SCIENTISTS

Florida Engineer No. 2648
700 SOUTH PALM AVE, SUITE 160
PENSACOLA, FL 32502
Phone: 850.468.9077 WWW.DRMP.COM

Florida Engineer # 88721
PROJECT NO.: 21-0659.000
SCALE:
DATE: 05/02/22
DRAWING: C100

P:\Projects\21-0659.000_Escambi_Co-Gulf_Beach_Hwy_Drainage\CADD\ roadway\SCDPRD01.dwg Plotted: Aug 26, 2022 - 12:37pm by bmassey



DESIGNED BY		DRAWN BY		CHECKED BY		APPROVED BY	
BRM	BRM	SM	SM	SM	SM	SM	SM

**EROSION CONTROL PLAN
SHEET 2**

**GULF BEACH HIGHWAY
DRAINAGE OUTFALL**

NAVY POINT FIRST ADDITION
WARRINGTON, FL 32507

DO NOT SCALE THIS DRAWING - DIMENSIONS AND NOTES TAKE PREFERENCE

P:\Projects\21-0659-000_Escambia_Co-Gulf_Beach_Hwy_Drainage_CADD_Vooradway_SCCBDR01.dwg Plotted: Aug 26, 2022 - 12:37pm by bmassey

DRMP
ENGINEERS • SURVEYORS • PLANNERS • SCIENTISTS

Florida Engineer # 2618
700 SOUTH PALM AVE. STREET SUITE 160
PENSACOLA, FL 32502
Phone: 850.469.9077 WWW.DRMP.COM

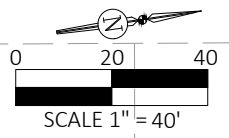
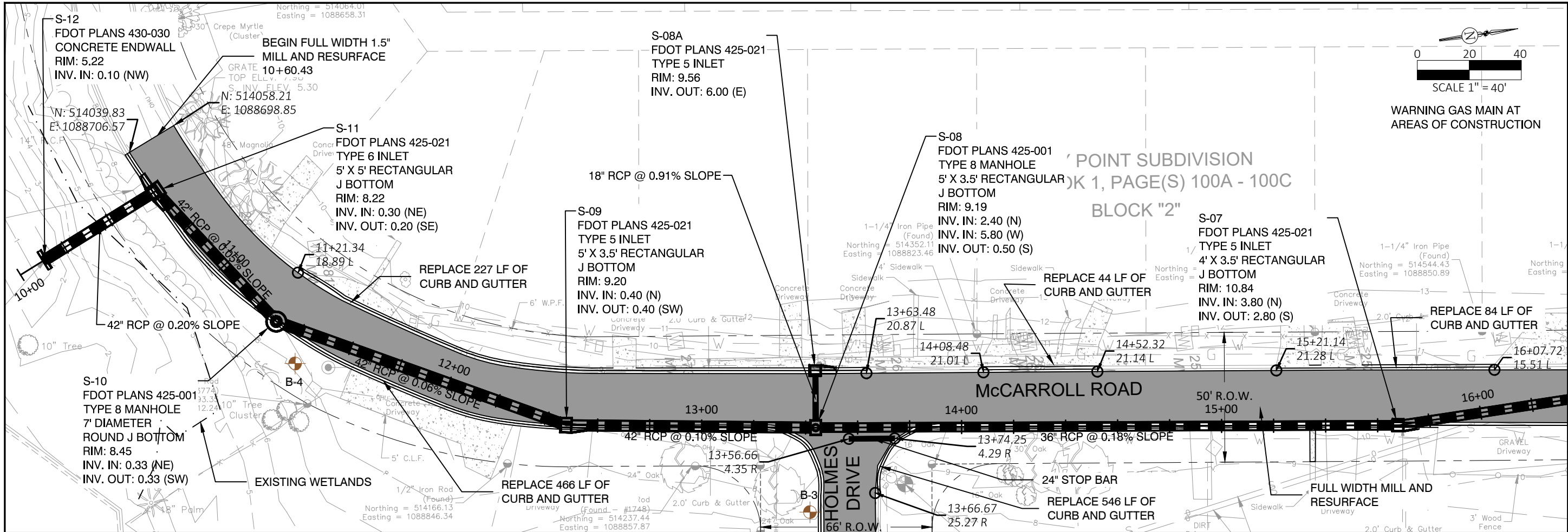
Florida Engineer # 88721

PROJECT NO.:
21-0659.000

SCALE:

DATE:
05/02/22

DRAWING:
C101



WARNING GAS MAIN AT AREAS OF CONSTRUCTION

'POINT SUBDIVISION
K 1, PAGE(S) 100A - 100C
BLOCK "2"

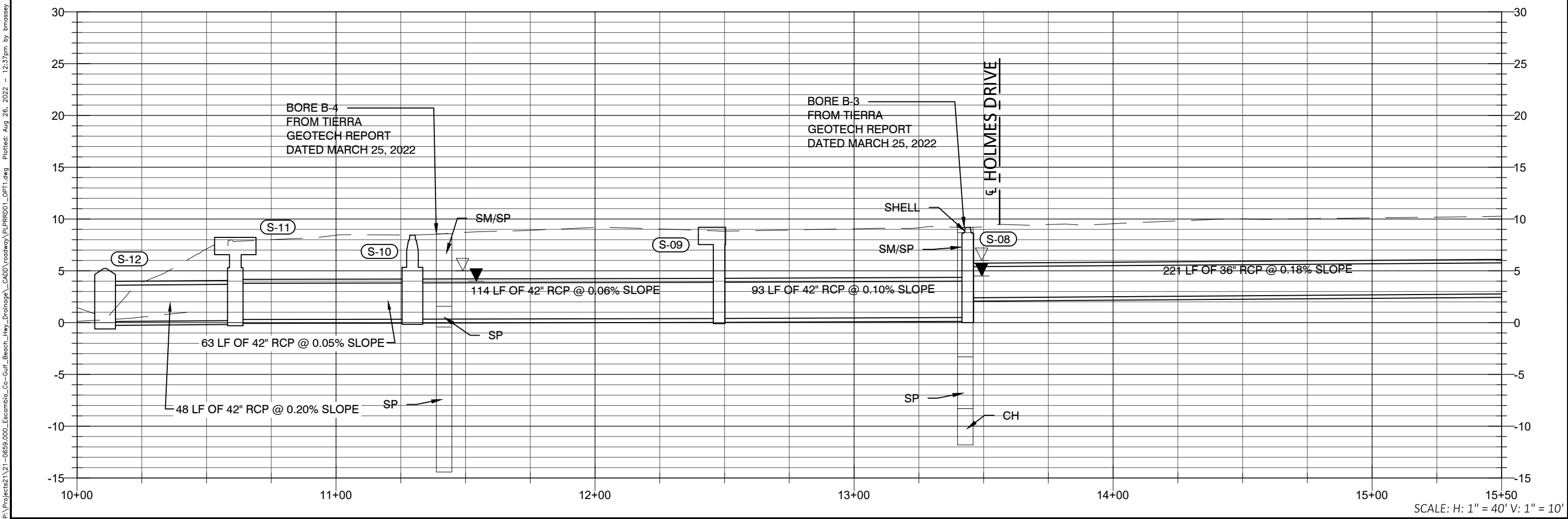
DESIGNED BY	BRM	DATE	DESCRIPTION	BY
DRAWN BY	BRM			
CHECKED BY	SM			
APPROVED BY	SM			

**PLAN AND PROFILE
OPTION 1 SHEET 1**

**GULF BEACH HIGHWAY
DRAINAGE OUTFALL**
NAVY POINT FIRST ADDITION
WARRINGTON, FL 32507

DO NOT SCALE THIS DRAWING - DIMENSIONS AND NOTES TAKE PREFERENCE

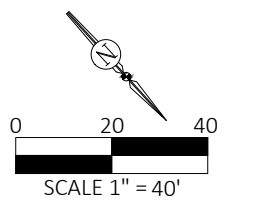
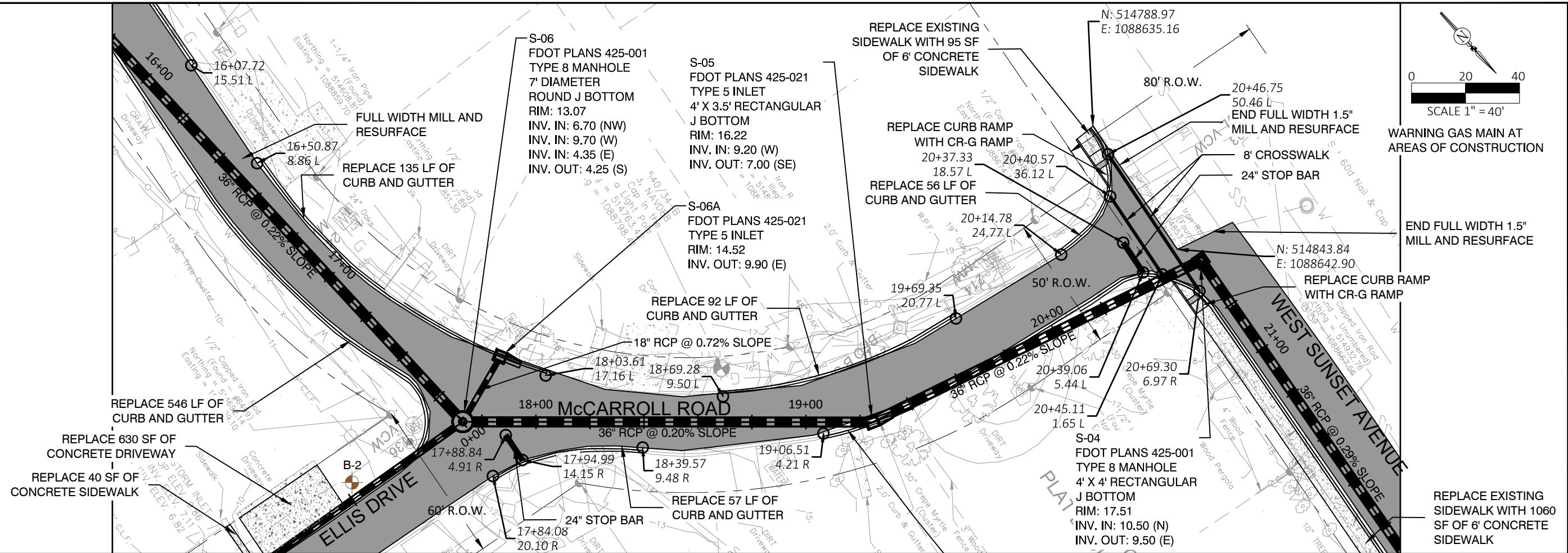
Florida Engineer # 88721
PROJECT NO.: 21-0659.000
SCALE:
DATE: 05/02/22
DRAWING: C102



SCALE: H: 1" = 40' V: 1" = 10'

P:\Projects\21-0659.000_Escambia_Co-Gulf_Beach_Hwy_Drainage_CADD\ roadway\PLRRD01_OPT1.dwg Plotted: Aug 26, 2022 - 12:37pm by bmassey

P:\Projects\21-0659-000_Escambia_Co-Gulf_Beach_Hwy_Drainage\CADD\ roadway_PLRR001_OPT1.dwg Plotted: Aug 26, 2022 - 12:37pm by bmassey



WARNING GAS MAIN AT AREAS OF CONSTRUCTION

END FULL WIDTH 1.5\"/>

DESIGNED BY		DRAWN BY		CHECKED BY		APPROVED BY	
BRM	SM	BRM	SM	BRM	SM	BRM	SM

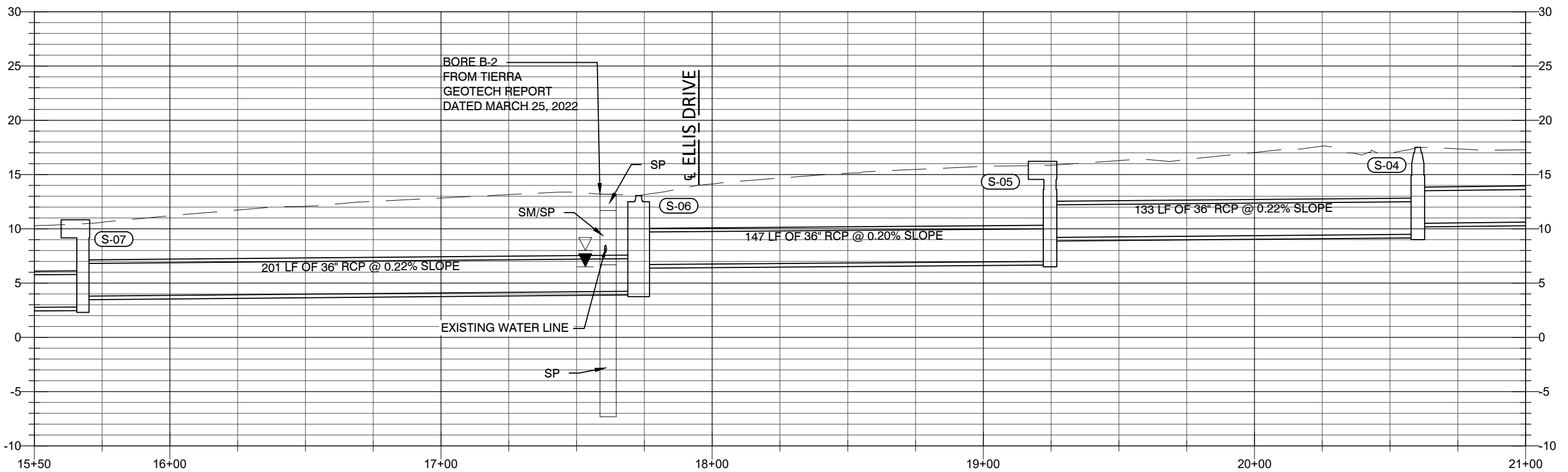
**PLAN AND PROFILE
OPTION 1 SHEET 2**

**GULF BEACH HIGHWAY
DRAINAGE OUTFALL**
NAVY POINT FIRST ADDITION
WARRINGTON, FL 32507

DO NOT SCALE THIS DRAWING - DIMENSIONS AND NOTES TAKE PREFERENCE

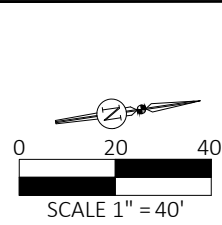
DRMP
ENGINEERS • SURVIVORS • PLANNERS • SCIENTISTS
Certificate of Authorization No. 2648
700 SOUTH PALM AVE, SUITE 160
PENSACOLA, FL 32502
Phone: 850.468.9077 WWW.DRMP.COM

Florida Engineer # 88721
PROJECT NO.: 21-0659.000
SCALE:
DATE: 05/02/22
DRAWING: C103



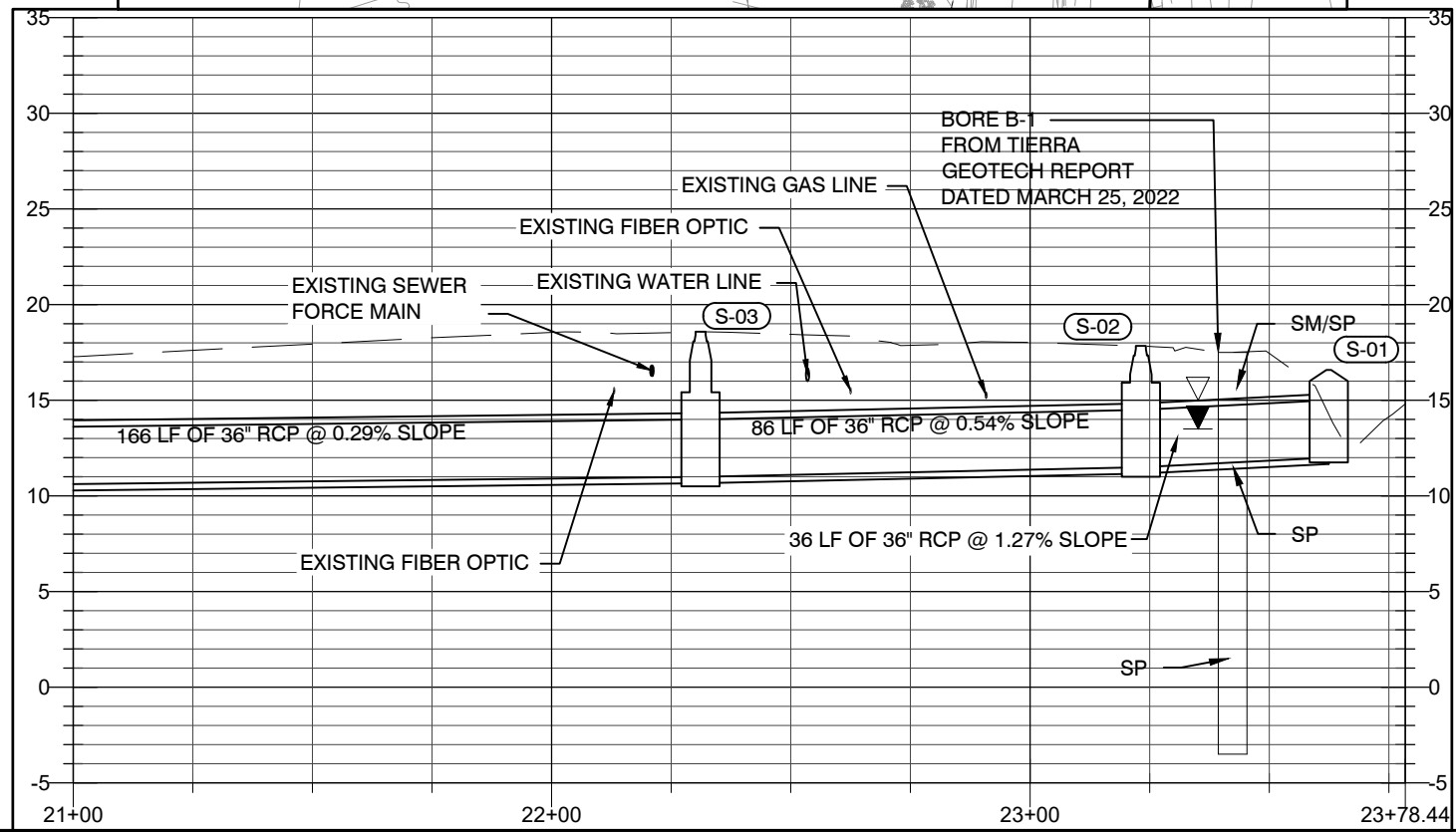
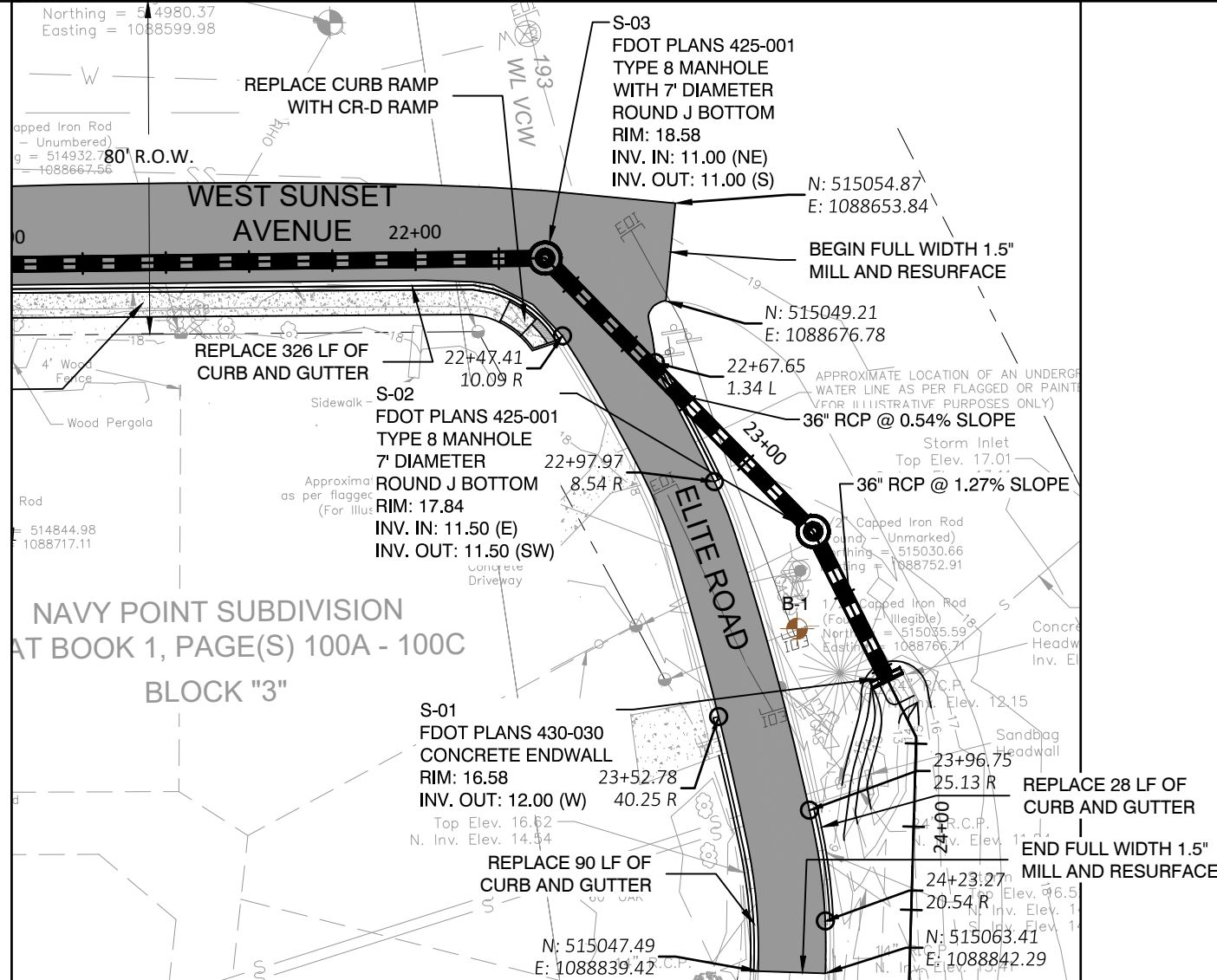
SCALE:
H: 1" = 40'
V: 1" = 10'

P:\Projects\21-0659\000_Escambia_Co-Gulf_Beach_Hwy_Drainage\CADD\Roadway\PLRRRD01_OPT1.dwg Plotted: Aug 26, 2022 - 12:38pm by bmassey



WARNING GAS MAIN AT AREAS OF CONSTRUCTION

REPLACE EXISTING SIDEWALK WITH 1060 SF OF 6' CONCRETE SIDEWALK



SCALE:
 H: 1" = 40'
 V: 1" = 10'

NO.	DATE	DESCRIPTION	BY

DESIGNED BY	BRM
DRAWN BY	BRM
CHECKED BY	SM
APPROVED BY	SM

**PLAN AND PROFILE
 OPTION 1 SHEET 3**

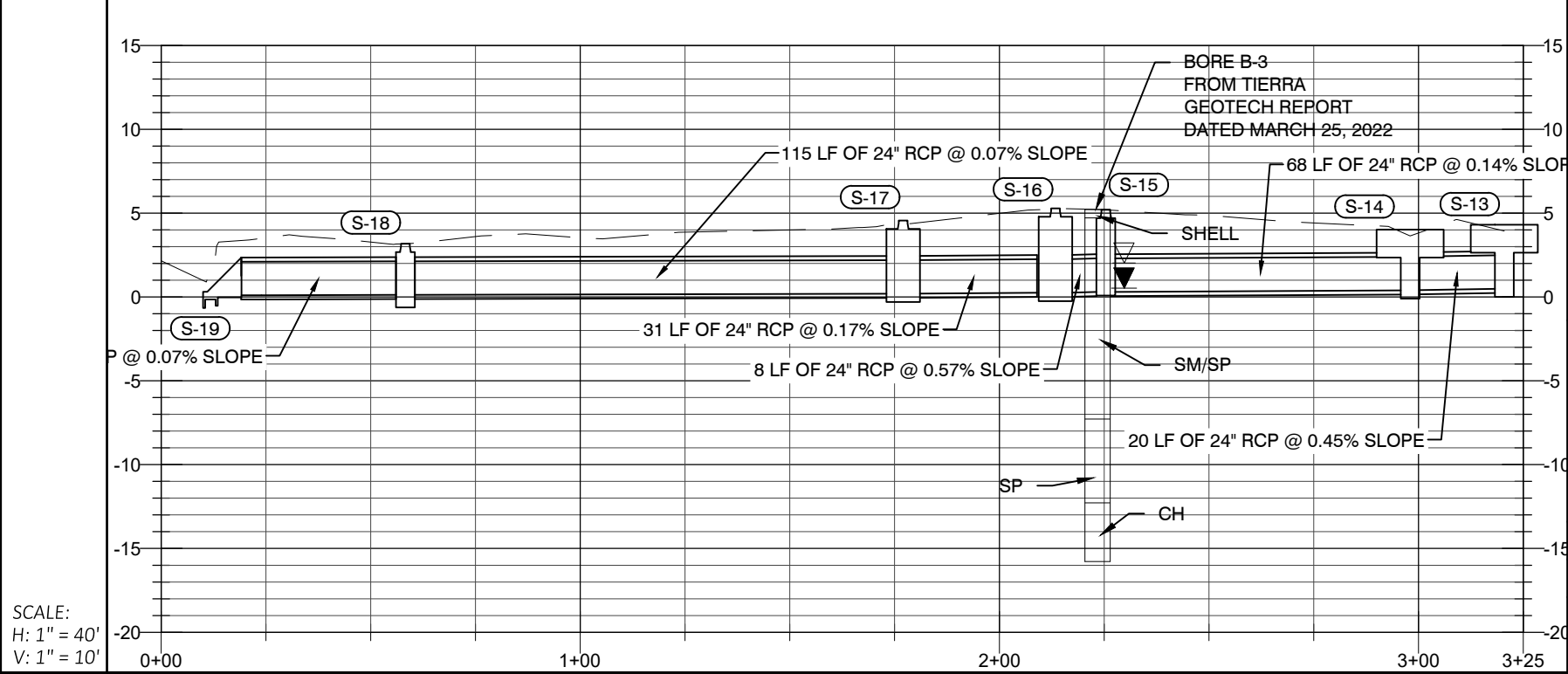
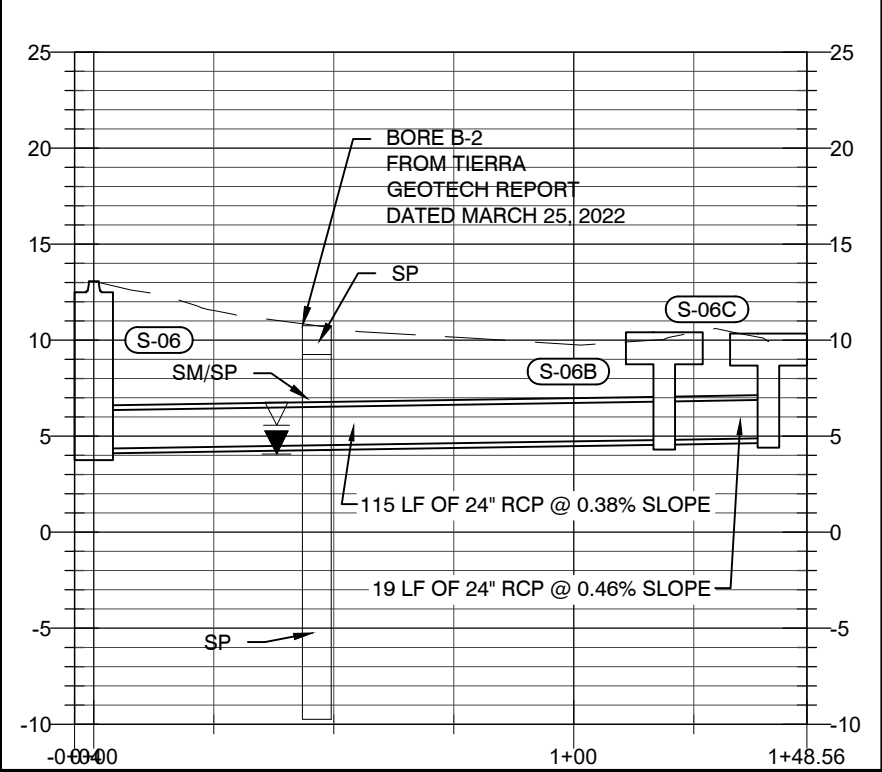
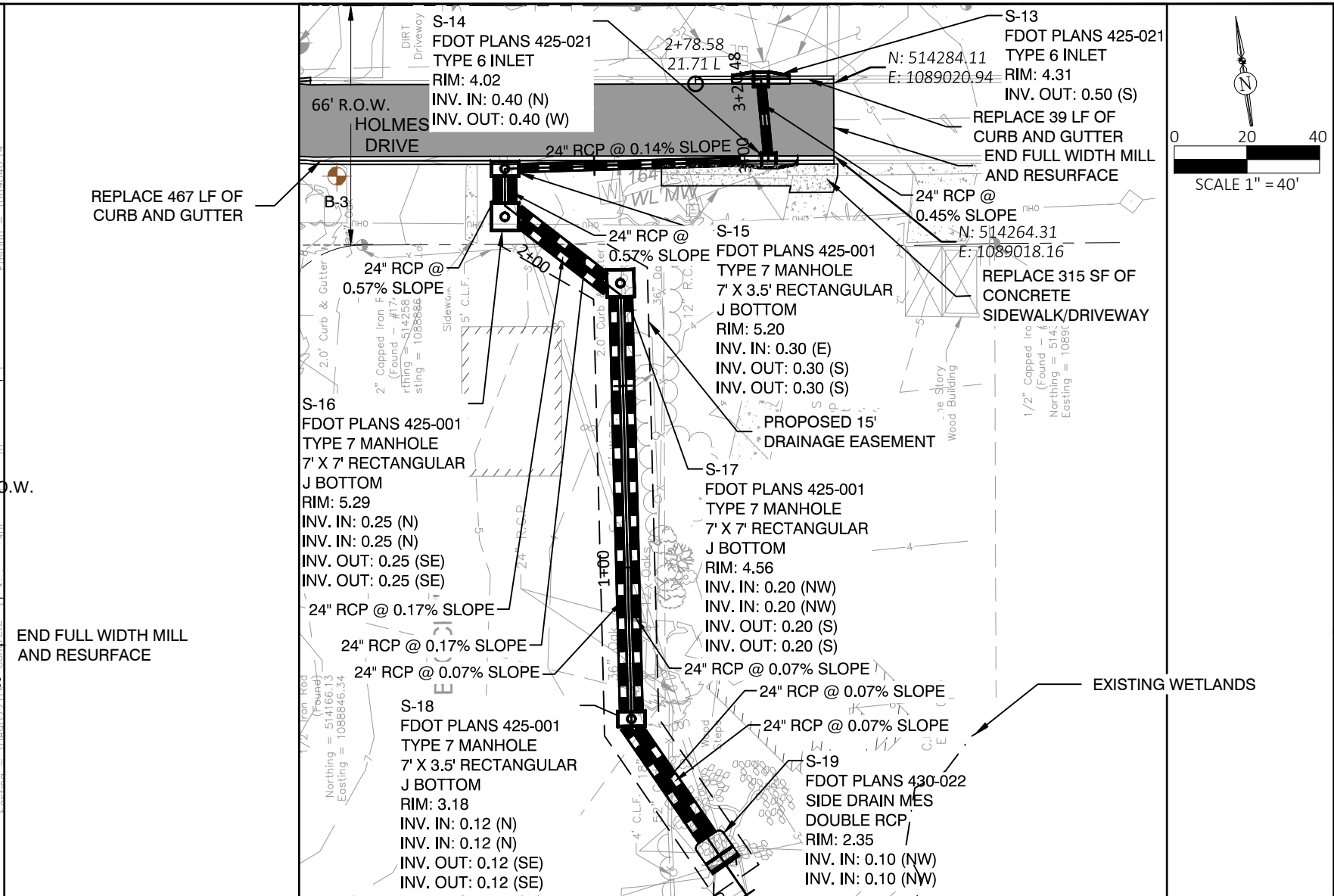
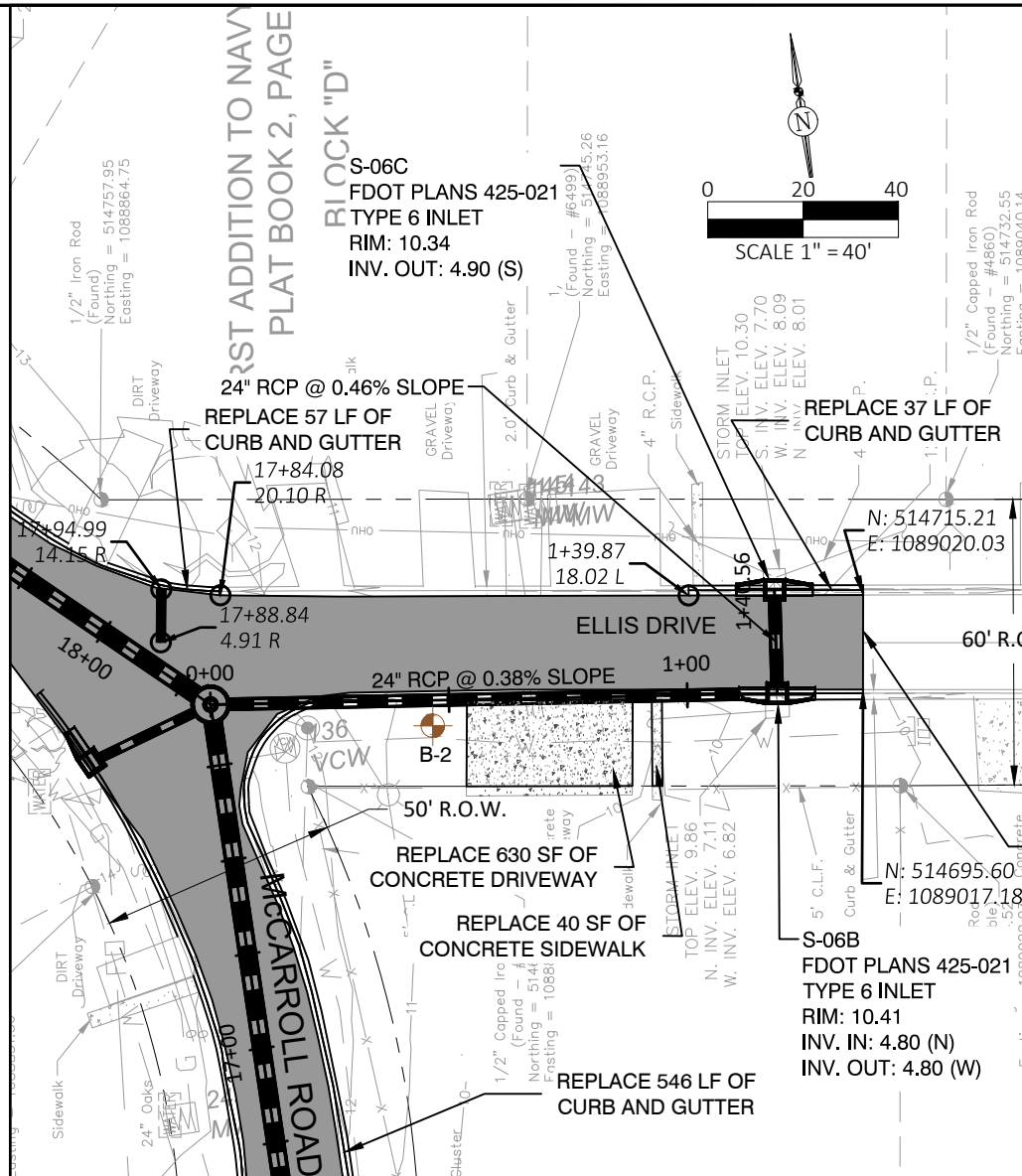
**GULF BEACH HIGHWAY
 DRAINAGE OUTFALL**
 NAVY POINT FIRST ADDITION
 WARRINGTON, FL 32507

DO NOT SCALE THIS DRAWING - DIMENSIONS AND NOTES TAKE PREFERENCE



Florida Engineer # 88721
PROJECT NO.: 21-0659.000
SCALE:
DATE: 05/02/22
DRAWING: C104

P:\Projects\21-0659-000_Escambia_Co-Curf_Beach_Hwy_Drainage\CADD\ roadway\PLRRD01_OPT1.dwg Plotted: Aug 26, 2022 - 12:38pm by bmassey



DESIGNED BY		BRM	SM
DRAWN BY		BRM	SM
CHECKED BY			
APPROVED BY			

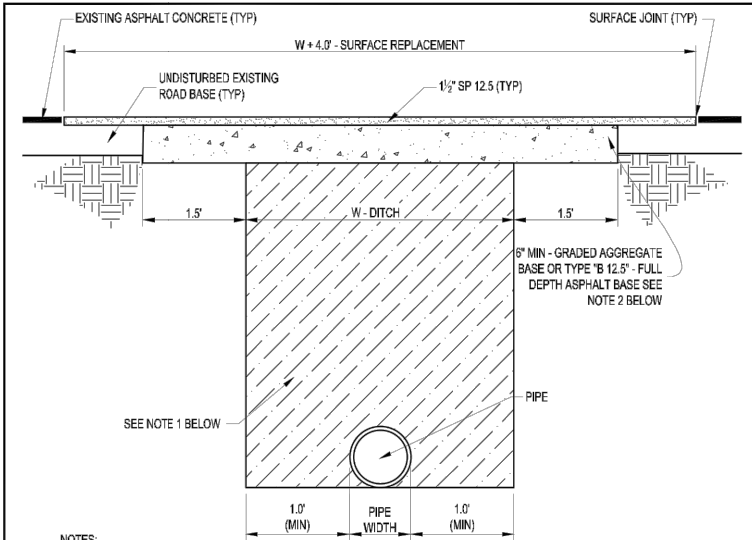
PLAN AND PROFILE OPTION 1 SHEET 4

GULF BEACH HIGHWAY DRAINAGE OUTFALL
NAVY POINT FIRST ADDITION
WARRINGTON, FL 32507

DO NOT SCALE THIS DRAWING - DIMENSIONS AND NOTES TAKE PREFERENCE

DRMP
ENGINEERS • SURVEYORS • PLANNERS • SCIENTISTS
Certificate of Authorization No. 2648
700 SOUTH PALM AVE. STREET, SUITE 160
PENSACOLA, FL 32502
Phone: 850.469.9077 WWW.DRMP.COM

Florida Engineer # 88721
PROJECT NO.: 21-0659.000
SCALE:
DATE: 05/02/22
DRAWING: C105



- NOTES:**
- ROAD PATCH WORK BACKFILL (SUBBASE) MATERIAL SHALL BE PLACED IN NOT MORE THAN 8" LIFTS. EACH LAYER TO BE TAMPED TO A MINIMUM OF 40 LBR AND A MINIMUM OF 98% OF MODIFIED PROCTOR.
 - GRADED AGGREGATE BASE SHALL BE A MINIMUM OF 100LBR AND COMPACTED TO A MINIMUM OF 98% MODIFIED PROCTOR. CONCRETE SHALL BE A MINIMUM 3000 PSI.
 - ROAD CUTS SHALL BE MECHANICALLY SAW CUT TO FORM A SURFACE PAVEMENT JOINT AND TACK COATED ALONG THE FACE OF CUT JOINTS PRIOR TO ASPHALT PLACEMENT.
 - LONGITUDINAL ROAD CUTS OF LESS THAN ONE-HALF PAVEMENT WIDTH TO BE PATCHED SAME AS LATERAL PATCH. LONGITUDINAL ROAD CUTS ONE-HALF OR GREATER TO BE PATCHED WITH SAME BASE MATERIAL AND ENTIRE ROAD WIDTH RESURFACED.
 - TOP WIDTH OF DITCH (W-DITCH) IS TO BE DETERMINED BY OSHA LAYBACK SLOPE REQUIREMENTS FOR DEPTH OF CUT.

PAVED ROAD (LARGE PATCH) DETAIL
(FOR PATCHES 24" WIDE OR GREATER)
(ALL NOTES APPLY, SEE ABOVE)
(NEIGHBORHOOD ROADS ONLY)
NOT TO SCALE

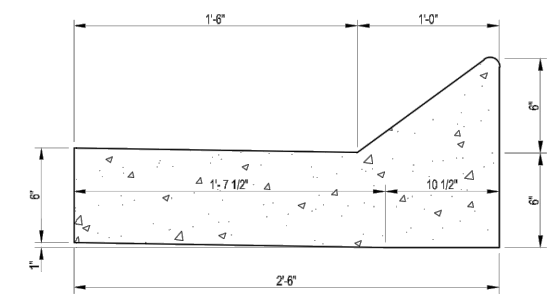
L:\2018 Details Library\Roadway Construction\Road-15.dwg, Aug 13, 2021 - 8:56:26AM, dimovey

NO.	DATE	BY
XX	XXXXXX	XXXXXXXX

ENGINEERING DIVISION
HICAMBA COUNTY, FLORIDA, CENTRAL OFFICE COMPLEX
3863 WEST PARK PLACE
PENSACOLA, FLORIDA 32505

COUNTY DETAILS
ROADWAY CONSTRUCTION

TYPICAL UTILITY PATCH DETAIL



- NOTES:**
- ALL CURBS TO HAVE CONTROL JOINT AT 10' ON CENTER. MINIMUM DEPTH OF JOINT TO BE 2".
 - EXPANSION JOINTS ARE TO BE 60' ON CENTER, TYPICAL FOR ALL CURB.
 - CONCRETE TO BE 3000 PSI.

COUNTY TYPE "B" CURB & GUTTER
NOT TO SCALE

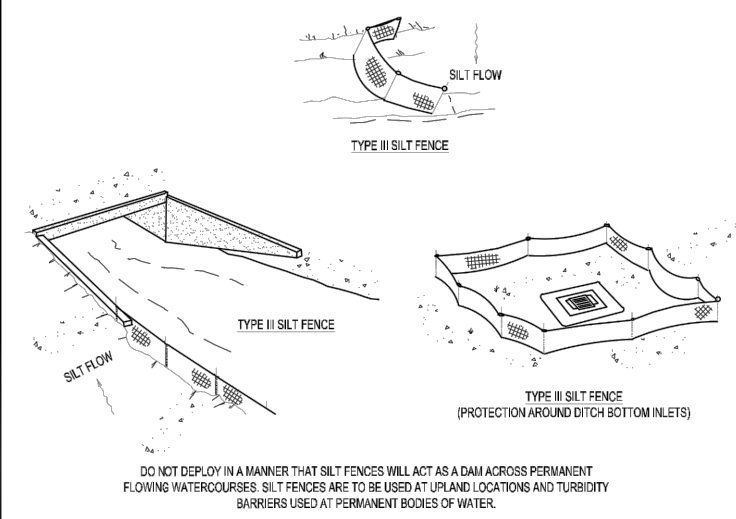
L:\2018 Details Library\Roadway Construction\Road-22.dwg, Aug 13, 2021 - 8:57:00AM, dimovey

NO.	DATE	BY
XX	XXXXXX	XXXXXXXX

ENGINEERING DIVISION
HICAMBA COUNTY, FLORIDA, CENTRAL OFFICE COMPLEX
3863 WEST PARK PLACE
PENSACOLA, FLORIDA 32505

COUNTY DETAILS
ROADWAY CONSTRUCTION

COUNTY TYPE "B" CURB & GUTTER



SILT FENCE APPLICATIONS
NOT TO SCALE

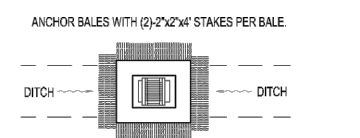
L:\2018 Details Library\Stormwater Prevention\Erosion-3.dwg, Aug 13, 2021 - 9:00:51AM, dimovey

NO.	DATE	BY
XX	XXXXXX	XXXXXXXX

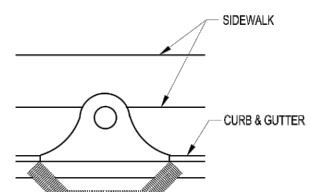
ENGINEERING DIVISION
HICAMBA COUNTY, FLORIDA, CENTRAL OFFICE COMPLEX
3863 WEST PARK PLACE
PENSACOLA, FLORIDA 32505

COUNTY DETAILS
STORMWATER PREVENTION DETAILS

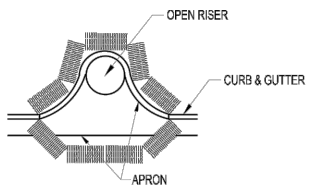
SILT FENCE APPLICATIONS



DITCH BOTTOM INLET



COMPLETED INLET



PARTIAL INLET

**PROTECTION AROUND INLETS
OR SIMILAR STRUCTURES**
NOT TO SCALE

L:\2018 Details Library\Stormwater Prevention\Erosion-9.dwg, Aug 13, 2021 - 9:01:21AM, dimovey

NO.	DATE	BY
XX	XXXXXX	XXXXXXXX

ENGINEERING DIVISION
HICAMBA COUNTY, FLORIDA, CENTRAL OFFICE COMPLEX
3863 WEST PARK PLACE
PENSACOLA, FLORIDA 32505

COUNTY DETAILS
STORMWATER PREVENTION DETAILS

PROTECTION AROUND INLETS

DESIGNED BY	BRM
DRAWN BY	BRM
CHECKED BY	SM
APPROVED BY	SM

NO.	DATE	DESCRIPTION	BY

DETAILS

**GULF BEACH HIGHWAY
DRAINAGE OUTFALL**
NAVY POINT FIRST ADDITION
WARRINGTON, FL 32507

DO NOT SCALE THIS DRAWING - DIMENSIONS AND NOTES TAKE PREFERENCE

DRMP
ENGINEERS • SURVEYORS • PLANNERS • SCIENTISTS

Certificate of Authorization No. 2648
700 SOUTH PALM AVE. STREET, SUITE 160
PENSACOLA, FL 32502
Phone: 850.469.9077 WWW.DRMP.COM

Florida Engineer #	88721
PROJECT NO.:	21-0659.000
SCALE:	
DATE:	05/02/22
DRAWING:	C106