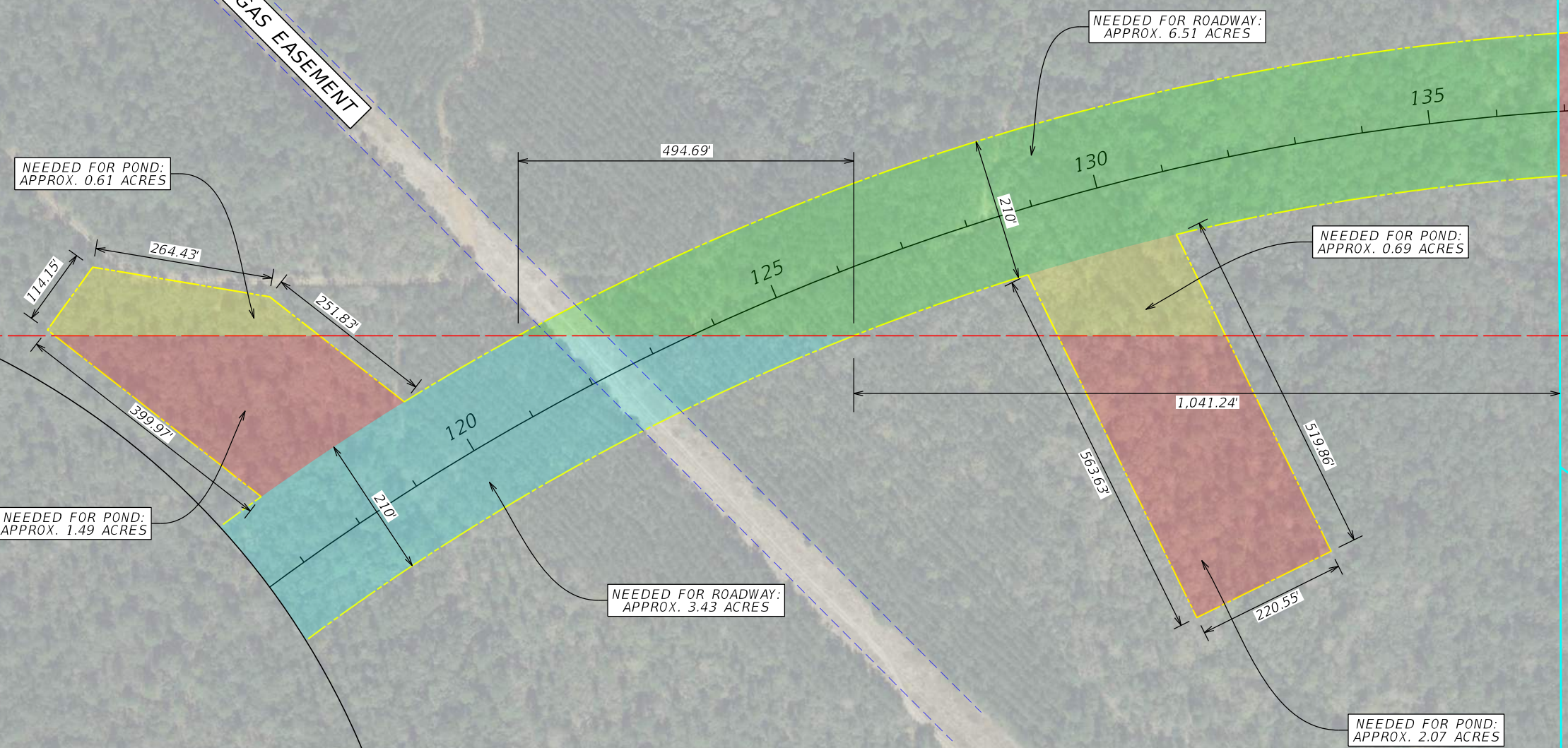


EXIT ONE DEVELOPMENT GROUP LLC
PROPERTY NO. 211N311101000001

GULF SOUTH GAS EASEMENT



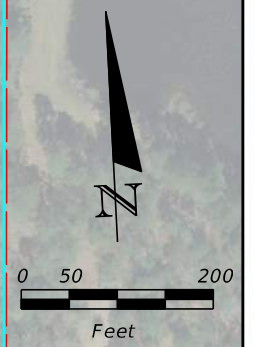
EXIT ONE DEVELOPMENT GROUP LLC
PROPERTY NO. 311N311101000000

REVISIONS				THOMAS A. MCLENDON, P.E. P.E. LICENSE NUMBER 71749 MOTT MACDONALD FLORIDA, LLC 220 WEST GARDEN STREET, SUITE 700 PENSACOLA, FL 32502 CERTIFICATE OF AUTHORIZATION #155	BOARD OF COUNTY COMMISSIONERS ESCAMBIA COUNTY, FLORIDA			RIGHT-OF-WAY REQUIREMENTS	SHEET NO.
DATE	DESCRIPTION	DATE	DESCRIPTION		ROAD NO.	COUNTY	FINANCIAL PROJECT ID		
					KINGSFIELD	ESCAMBIA			

THE OFFICIAL RECORD OF THIS SHEET IS THE ELECTRONIC FILE DIGITALLY SIGNED AND SEALED UNDER RULE 61G15-23.004, F.A.C.

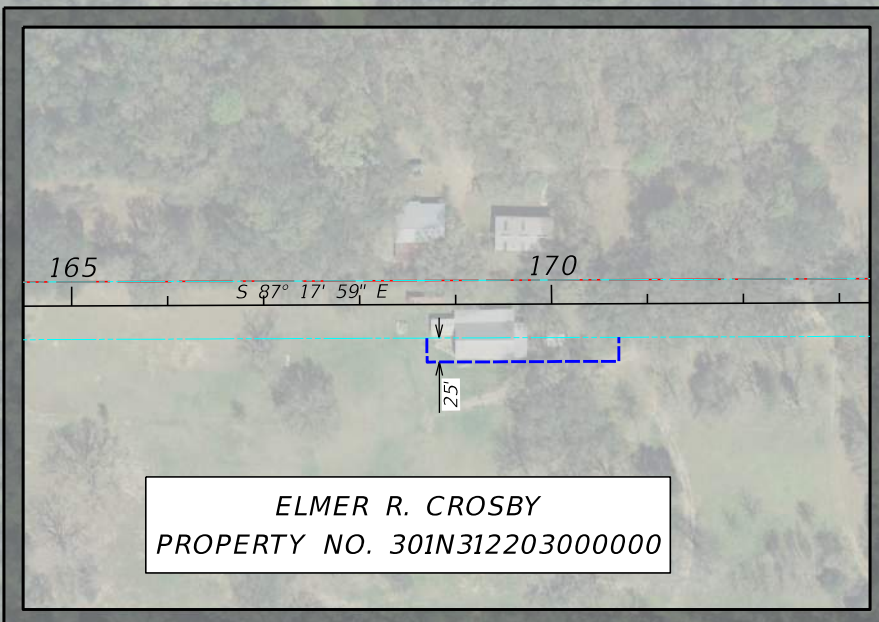
EXIT ONE DEVELOPMENT GROUP LLC
PROPERTY NO. 211N314301001001

INSET DETAIL



NEEDED FOR POND:
APPROX. 5.41 ACRES

NEEDED FOR POND:
APPROX. 2.21 ACRES



ELMER R. CROSBY
PROPERTY NO. 301N312203000000

FRANK AND BETH WESTMARK
PROPERTY NO. 211N314301000000

NEEDED FOR ROADWAY:
APPROX. 4.63 ACRES

NEEDED FOR ROADWAY:
APPROX. 3.98 ACRES

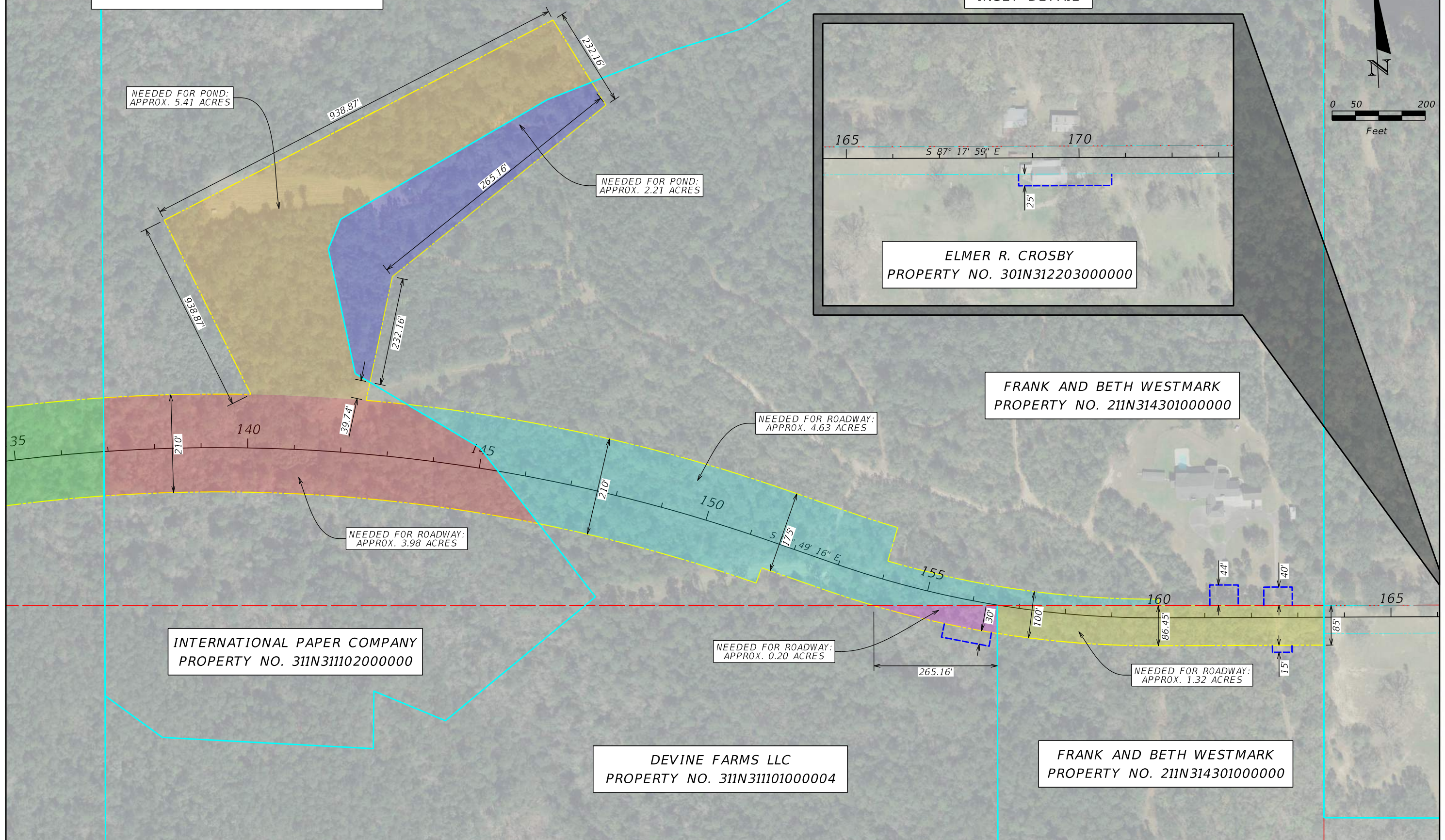
NEEDED FOR ROADWAY:
APPROX. 0.20 ACRES

NEEDED FOR ROADWAY:
APPROX. 1.32 ACRES

INTERNATIONAL PAPER COMPANY
PROPERTY NO. 311N311102000000

DEVINE FARMS LLC
PROPERTY NO. 311N311101000004

FRANK AND BETH WESTMARK
PROPERTY NO. 211N314301000000



REVISIONS			
DATE	DESCRIPTION	DATE	DESCRIPTION

THOMAS A. MCLENDON, P.E.
P.E. LICENSE NUMBER 71749
MOTT MACDONALD FLORIDA, LLC
220 WEST GARDEN STREET, SUITE 700
PENSACOLA, FL 32502
CERTIFICATE OF AUTHORIZATION #155

BOARD OF COUNTY COMMISSIONERS ESCAMBIA COUNTY, FLORIDA		
ROAD NO.	COUNTY	FINANCIAL PROJECT ID
KINGSFIELD	ESCAMBIA	

**RIGHT-OF-WAY
REQUIREMENTS**

SHEET NO.

THE OFFICIAL RECORD OF THIS SHEET IS THE ELECTRONIC FILE DIGITALLY SIGNED AND SEALED UNDER RULE 61G15-23.004, F.A.C.