



May 20, 2015

Timothy Day
Escambia County
3363 West Park Place
Pensacola, FL 32505

***Re: Task Order – PD 02-03.79.62.2.CED
Impacts of Lighting on Nesting Marine Turtles – Perdido Key
WSI Project #2014-466***

Dear Mr. Day,

Per the task order issued by Escambia County, Wetland Sciences, Inc. has completed our evaluation of the impact of lighting on nesting marine turtles on gulf front beaches within the jurisdiction of Escambia County and within the physical boundaries of Perdido Key. This letter report summarizes our findings and enumerates the deliverables.

From March 29 to May 03, 2015, scientists with Wetland Sciences, Inc. surveyed the beach of Perdido Key from the Florida/Alabama State line to Perdido Key State Park, then Perdido Key State Park to the Gulf Islands National Seashore Johnson's Beach Gate. Surveys were initially conducted during the night between the hours of 8PM-Midnight. During the night surveys staff scientists identified those light sources directly or indirectly visible from the nesting beach. Lights identified during the survey included all exterior lighting directly or indirectly visible from the bathing beach, including lights within open structures such as overhangs, pavilions, etc. and lighted devices such as drink machines, viewing screens, signs, and advertising. The night survey was followed by a daytime inspection to gather additional daytime photographs. Each identified light source was characterized as follows:

- Light source type (e.g. pole, exterior porch light, up-light, sign lighting, etc.
- Lamp type (HPS, LPS, fluorescent, halogen, metal halide, compact fluorescent, incandescent, etc.)
- GPS coordinates
- Mounting height and type
- Apparent condition
- Apparent function
- Safety concerns and performance
- Address
- Location of light, both on structure or in landscape (balcony, porch, garage, patio, deck, roadway, parking lot, walkway etc.) and relative to the beach (north, south, east, or west side of structure)

- Photographs of each light source (night from beach, day from beach and relative close up.)

The findings of the survey are detailed in an overall spreadsheet (Exhibit A) which provides the detailed characterization of each light source identified, individual spreadsheets of each light source identified along with day and night photographs (Exhibit B), and an aerial base map depicting the location of each identified visible light cross referenced to an a unique record number associated with each light source recorded during the surveys (Exhibit C).

Within the master spreadsheet we provide a general recommendation for a replacement fixture or solution to remedy the problematic light source as well as a replacement cost for each. The recommendation and cost estimate should be considered approximate and subject to verification. Also, there were instances where we could not identify the number of fixtures associated with each record. For example, parking garages located beneath gated condos where we could not inspect the garage without physically trespassing. Additionally, there were several interior light sources that were identified during our survey. Solutions to interior lights may include reduction of the intensity of the interior lights, tinting glass to reduce light transmission, or utilization of window screens. In these instances we were not able to provide an estimation of cost.

This concludes our report. I have attached a statement of our firm which will be submitted in accordance with the policy and procedures outlined in the referenced task order. If you have any question or require any modifications, please let me know.

Respectfully,
WETLAND SCIENCES, INC.



Keith Johnson
Environmental Scientist

Enclosures: As indicated

Exhibit A

Master Spreadsheet

Record #	Lat/Long	Address	Fixture type	Lamp Type	Mounting Height	Beach visible?	Light on?	Fixture Location description	Shielding type	Barriers from beach	Replacement Recommendation	Approximate Recommendation Cost
1a	30.281056, 87.517851	17401 Perdido Key Dr	2 cobrahead on single pole	HPS	30'	Yes	Yes	E side of Florabama parking lot	None	None	Replace with Viper type III amber LED with full 360 degree shield	\$2,800.00
1b	30.280997 -87.517715	17401 Perdido Key Dr	Shoebox on single pole	Halide	25'	Yes	No	SE corner of Florabama parkinglot	Box	None	Replace each fixture with Shoebox type III 30W amber LED	\$600.00
1c	30.281486 -87.517946	17401 Perdido Key Dr	2 Box fixtures on single pole	Halogen	25'	Yes	No	SE corner Florabama by entry	Box	None	Replace with WRDS amber LED fixture and sign lights off during nesting season	\$1,200.00
1d	30.281793 -87.517931	17401 Perdido Key Dr	3 Shoebox fixtures on single pole	HPS	25'	Yes	Yes	NE corner of Florabama parking lot	Box	None	Replace each fixture with Shoebox type III 30W amber LED or	\$1,800.00
1e	30.281332 -87.517487	17401 Perdido Key Dr	2 shoebox on single pole mount	HPS	30'	Yes	Yes	E side of Florabama parking lot, W side of Mediterra Condos	Box	None	Replace each fixture with Shoebox type III 30W amber LED	\$1,200.00
1f	30.281658 -87.517506	17401 Perdido Key Dr	1 shoebox mounted on single pole	HPS	30'	Yes	Yes	E side of Florabama parking lot, S side of ROW	Box	None	Replace each fixture with Shoebox type III 30W amber LED	\$600.00
2	30.281967 -87.517753	17395 Perdido Key Dr	Illuminated sign	Fluorescent	15'	Yes	Yes	N side of ROW S elevation of building	None	None	Illuminate sign with fully shielded WRDS amber LED fixture & remove fluorescent bulbs	\$600.00
3a	30.282533 -87.517506	17395 Perdido Key Dr	Shoebox on pole mount	Metal Halide	25'	Yes	Yes	E side Florabama lotto, W of Waffle House parking lot	None	None	Replace each fixture with Shoebox type III 30W amber LED	\$600.00
3b	30.282533 -87.517506	17395 Perdido Key Dr	1 cobrahead, 1 shoebox on 1 pole mount	HPS	25'	Yes	Yes	SW corner of Waffle House	None	Buildings	Replace with Viper type III amber LED with full 360 degree shield	\$2,000.00
3c	30.282206 -87.517445	17395 Perdido Key Dr	2 shoebox on rooftop	Halide	15'	Yes	Yes	NW corner of Waffle House rooftop	None	Buildings	Replace each fixture with Shoebox type III 30W amber LED	\$1,200.00
3d	30.282543 -87.517504	17350 Perdido Key Dr	2 Shoebox fixtures pole mounted	Halide & HPS	30'	Yes	Yes	Near NW corner of Waffle House property	None	Buildings	Replace each fixture with Shoebox type III 30W amber LED	\$1,200.00
3e	30.282444 -87.517188	17395 Perdido Key Dr	2 pole mounted shoebox fixtures	Halide	20'	Yes	Yes	Near NE corner of parking lot	None	None	Replace each fixture with Shoebox type III 30W amber LED	\$1,200.00
3f	30.282936 -87.517444	17350 Perdido Key Dr	1 shoebox mounted on single pole	Halide	25'	Yes	Yes	NW corner of Yacht Club building; east of anner sign	None	None	Replace each fixture with Shoebox type III 30W amber LED	\$600.00
3g	30.282298 -87.517946	17395 Perdido Key Dr	2 Shoebox on 1 pole	HPS	25'	Yes	Yes	Parking lot landscape island NW corner of site	None	None	Replace each fixture with Shoebox type III 30W amber LED	\$1,200.00
3h	30.282208 87.517140	17395 Perdido Key Dr	2 Shoebox fixtures on alluminum poles	Halide	20'	Yes	Yes	SE corner of parking lot, just S of landscape island	None	None	Replace each fixture with Shoebox type III 30W amber LED	\$1,200.00
3i	30.282249 -87.517192	17395 Perdido Key Dr	2 Shoebox fixtures on alluminum poles	Halide	20'	Yes	Yes	Center of E property line, just W of wooden fence	None	None	Replace each fixture with Shoebox type III 30W amber LED	\$1,200.00
3j	30.283129 -87.517124	17350 Perdido Key Dr	1 pole mounted shoebox	Halide	30'	Yes	Yes	NE corner of Yacht Bulb building	None	None	Replace each fixture with Shoebox type III 30W amber LED	\$600.00
3k	30.282921 -87.517620	17350 Perdido Key Dr	1 pole mounted shoebox	Halide	25'	Yes	Yes	NW coner of Yacht Club property, W of banner sign	None	None	Replace each fixture with Shoebox type III 30W amber LED	\$600.00
3l	30.281962 -87.517174	17395 Perdido Key Dr	1 pole mounted shoebox	HPS	25'	Yes	Yes	SE corner of Waffle House property, just S of ROW	None	None	Replace each fixture with Shoebox type III 30W amber LED	\$600.00

4a	30.282257 -87.517176	17348 Perdido Key Dr	1 cobrahead, 1 shoebox on 1 pole mount	HPS	25'	Yes	Yes	Center of W property line of Rib Shack	None	None	Replace existing shoebox with Shoebox type III 30W amber LED and cobrahead with viper type III amber LED with 360 shield	\$2,000.00
4b	30.282145 -87.516889	17348 Perdido Key Dr	1 Pole mounted cobrahead	HPS	20'	Yes	Yes	SE corner of Rib Shack building	None	None	Replace with Viper type III amber LED with full 360 degree shield	\$1,400.00
13	30.281211 -87.517421	17359 Perdido Key Drive	4 Balcony wall mounts per floor * 10 floors	Incandescent or fluorescent	8' above floor	Yes	Only on 4th & 10th floors	W side of building	Can	None	Replace bulb with low watt amber LED	\$800.00
14	30.281167 -87.516983	17359 Perdido Key Drive	Interior pool deck lighting	Fluorescent	10'	Yes	No	Inside glass enclosure	None	Glass in building	Tint glass to reduce light transmission or lower intensity of lighting	Unknown
15	30.281101 -87.517030	17359 Perdido Key Drive	Balcony lights	Incandescent or fluorescent	8' above floor	Yes	Yes-On 2,3,6 floors	SE corner of building	Can	None	Replace bulb with 5 watt amber LED	\$200.00
16	30.281156 -87.516901	17359 Perdido Key Drive	Balcony lights	Incandescent or fluorescent	8' above floor	Yes	Yes-only 1	SE corner of building on 3rd floor 2nd balcony	Can	None	Replace bulb with 5 watt amber LED	\$200.00
17	30.281548 -87.516649	17357 Perdido Key Drive	Ceiling mount	Incandescent	12'	Yes	Yes	Under white parking canopy	None	Vegetation	Replace with Hydrel 4762 Wildlife Series ceiling mount amber LEDs with beach-side shield.	Unknown
19	30.281314 -87.516413	17357 Perdido Key Drive	Wall mount pool deck lights	Amber incandescent	8'	Yes	Yes	Wall mount S side of building	Can	None	Replace bulb with 5 watt amber LED	\$20.00
20	30.281601 -87.516812	17359 Perdido Key Drive	Ceiling mount	White fluorescent	10'-12'	Yes	Yes	Ceiling of parking canopy immediately N of builing	None	Vegetation	Hydrel 4762 Wildlife Series ceiling mount amber LEDs with beach-side shield.	
21	30.281675 -87.515124	17287 Perdido Key Drive	Pool deck lights	HPS & Halide	15'	Yes	Yes	10 fixtures around perimeter of pool	Box	Primary Dune	Replace each fixture with Shoebox type III 30W amber LED	\$6,000.00
22	30.282511 -87.514702	17324 Perdido Key Drive	Pole mount street light	HPS	30'	Yes	Yes	Edge of ROW	None	Vegetation/ building	Replace with Viper type III amber LED with full 360 degree shield	\$1,400.00
23	30.281913 -87.513151	17253 Perdido Key Drive	Wall mount balcony lights	HPS	8'	Yes	Yes	3rd unit from E balcony	Can	None	Replace bulb with low watt amber LED	\$20.00
24	30.282367 -87.510745	17575 Perdido Key Dr	Ceiling mounts around pool	White incandescent or fluorescent	10'	Yes	Yes	Inside glass enclosed pool area	None	Vegetation, hedge, dune	Tint glass to reduce light transmission or lower intensity of lighting	Unknown
25	30.283027 -87.510726	7075 Perdido Key I	Several pole mounted shoebox fixtures (approx 9 fixtures)	Metal Halide	12'-15'	Yes	Yes	Around perimter of parking lot	None	Yes	Replace each fixture with Shoebox type III 30W amber LED	\$5,400.00
26	30.282519 -87.509947	17131 Perdido Key Dr	6 ceiling mounts	Incandescent, 1 amber	10'-12'	Yes	Yes	3 ceiling mount 1st floor, 2 under gazebo, 2 5th floor balcony	None	None	Replace with amber shielded LED	\$360.00
27	30.283861 -87.507723	7002 Perdido Key I	Street light pole mount	HPS	25'	Yes	Yes	N side of ROW, SE corner of Playa de rio	None	Buildings	Replace with Viper type III amber LED with full 360 degree shield	\$1,400.00
28	30.283062 -87.507236	16787 Perdido Key Dr	Balcony wall mount	Incandescent	8'	Yes	Yes	W side unit, S sude balcony	None	None	Replace bulb with low watt amber LED	\$20.00
29	30.283126 -87.506867	16787 Perdido Key Dr	Balcony wall mount	Incandescent	8'	Yes	Yes	Eastern townhome S side balcony	None	None	Replace bulb with low watt amber LED	\$20.00
30	30.284256 -87.506192	16786a Perdido Key Dt	Ceiling mounts under canopy	White LED	20'	Yes	Yes	Under canopy, over gas pump islands	None	Buildings	Replace with amber shielded LED	Unknown
31	30.283682 -87.504299	16777 Perdido Key Dr	Wall mount by entry way	HPS	8'	Yes	Yes	E tower, under canopy office	None	Vegetation, Dune	Replace bulb with low watt amber LED	\$60.00
32	30.283388 -87.504358	16777 Perdido Key Dr	Multiple- dune walkover lights	Incandescent, amber	2'	Yes	Yes	On dune walkover	Can	None	Remove	\$0.00
33	30.283721 -87.503867	16775 Perdido Key Dr	Balcony wall mount	Incandescent	7'	Yes	Yes	3rd floor, 2nd column of unit from E balcony	None	None	Replace bulb with low watt amber LED	\$20.00
34	30.283867 -87.503288	5799 Perdido Key I	Wall mount scone balcony	Incandescent	5'	Yes	Yes	S side of building, on either side of balcony	None	None	Replace bulb with low watt amber LED	\$40.00

35	30.284198 -87.501329	16605 Perdido Key Dr	6- Pool deck ceiling mount	Incandescent or white LED	10'-12'	Yes	Yes	S side of building pool deck	None	None	Replace with WRDS amber LED fixture	\$300.00
36	30.284507 -87.499501	16551 Perdido Key Dr	Interior eiling mount	Fluorescent	10'	Yes	Yes	Interior pool area	Glass of windows	None	Tint glass to reduce light transmission or lower intensity of lighting	Unknown
37	30.284538 -87.499151	16549 Perdido Key Dr	Ceiling mounts	Fluorescent	10'	Yes	Yes	SW corner of W tower, 1st floor	None	Vegetation, Dune	Replace with WRDS amber LED fixture	\$600.00
38	30.284569 -87.498677	16549 Perdido Key Dr	Breeze way wall mount	Incandescent or white LED	10'	Yes	Yes	E side of building breeze way	None	Vegetation	Replace bulb with low watt amber LED	\$420.00
39	30.285002 -87.498461	16549 Perdido Key Dr	Ceiling mount	White fluorescent	10'-12'	Yes	Yes	E building, 1st floor covered parking	None	Buildings	Replace with Hydrel 4762 Wildlife Series ceiling mount amber LEDs with house-side shield.	Unknown
40	30.284671 -87.498365	16549 Perdido Key Dr	Ceiling mount	Flood light	10'	Yes	Yes	under 1st floor balcony on E side of builing by dumpster & entry way	None	None	Replace with WRDS amber LED fixture	\$60.00
41	30.285409 -87.497898	16495 Perdido Key Dr	Sign	Red Fluorescent	20'	Yes	Yes	NE side building	None	Dunes, grass	Illuminate sign with fully shielded low watt amber LED, remove fluorescent bulbs	\$600.00
42	30.285808 -87.497088	16470 Perdido Key Dr	Open bottom shoebox & cobrahead mounted on 1 pole	HPS	30'	Yes	Yes	N side of road in parking lot	None	Dunes, grass	Replace with Viper type III amber LED with full 360 degree shield or Shoebox type III 30W amber LED	\$2,000.00
43	30.284962 -87.496581	16470 Perdido Key Dr	Wall mount	Incandescent	8'	Yes	Yes	S side of condo, W stairwell	None	None	Replace with WRDS amber LED fixture	\$180.00
44	30.285020 -87.495307	16335 Perdido Key Dr	Wall mount	Incandescent	8'	Yes	Yes	West stairwell	None	None	Replace with WRDS amber LED fixture	\$240.00
45	30.285155 -87.49472	16335 Perdido Key Dr	Pole mount	CFS	8'	Yes	Yes	Lights on pole mount	None	None	Replace with WRDS amber LED fixture	\$7,200.00
46	30.285423 -87.494047	16335 Perdido Key Dr	Pole mount	HPS	30'	Yes	Yes	In East parking lot	None	None	Replace with Viper type III amber LED with full 360 degree shield	\$1,400.00
47	30.28553 -87.493282	16325 Perdido Key Dr	20 lights, ceiling and wall mounts	Incandescent	12'	Yes	Yes	Multiple light on S side of building	None	None	Replace with WRDS amber LED fixture	\$1,200.00
48	30.285530 -87.493282	16325 Perdido Key Dr	Wall Mount	Box Halogen	12'	No	No	N side of house to illuminate driveway	None	None	Remove	\$0.00
49	30.286001 -87.491298	16311 Perdido Key Dr	Wall mount	Halogen	30'	Yes	Yes	Stairway lights, W side of house	None	None	Replace with WRDS amber LED fixture	\$60.00
51	30.28667 -87.487875	16287 Perdido Key Dr	West building, wall mounts & interior lights	Incandescent	8'	Yes	Yes	W building-S side of building: pool, balconies, interior lights	None	None	Replace with WRDS amber LED fixture , tint glass to reduce light transmission or reduce interior light intensity	\$7,200.00
52	30.286825 -87.487005	16287 Perdido Key Dr	East building, wall mounts & interior lights	Incandescent	8'	Yes	Yes	E building-S side of building: pool, balconies, interior lights	None	None	Replace with WRDS amber LED fixture , tint glass to reduce light transmission or reduce interior light intensity	\$6,000.00
53	30.2872914 -87.485417	16281 Perdido Key Dr	Balcony & interior lights	Incandescent	10'	Yes	Yes	Ceiling on S side balconies	None	None	Replace with WRDS amber LED fixture , tint glass to reduce light transmission or reduce interior light intensity	Unknown
54	30.28789 -87.484049	16265 Perdido Key Dr	Pole mount cobrahead	HPS	30'	Yes	Yes	W side of property by driveway	None	None	Replace with Viper type III amber LED with full 360 degree shield	\$1,400.00
55	30.288503 -87.482610	16255 Perdido Key Dr	Pole mount	HPS	30'	Yes	Yes	Along driveway and road	None	None	Replace with Viper type III amber LED with full 360 degree shield	\$1,400.00
56	30.288881 -87.4804485	16015 Perdido Key Dr	Pole mount	Halide	30'	Yes	Yes	Parking lot next to ROW	None	None	Replace each fixture with Shoebox type III 30W amber LED	\$600.00
57	30.288578 -87.480428	16015 Perdido Key Dr	Wall mount	Incandescent	8'	Yes	Yes	SW corner porch	None	None	Replace with amber shielded LED	\$120.00

58	30.295015 -87.452509	14700 River Road	Balcony lights	Incandescent	10'	Yes	Yes	Balconies on S elevatin of Building	None	Vegetation	Replace with WRDS amber LED fixture	\$3,780.00
59	30.293564 -87.451079	14765 Perdido Key Dr	Ceiling mounts	Incandescent	10'	Yes	Yes	Ceiling lights above garage and balcony	None	Vegetation	Replace with WRDS amber LED fixture	\$120.00
60	30.294737 -87.44969	14600 Perdido Key Dr	Sign	Fluorescent	25'	Yes	Yes	In front of building	None	Vegetation	Illuminate sign with fully shielded low watt amber LED, remove fluorescent bulbs	\$600.00
60a	30.294737 -87.44969	14600 Perdido Key Dr	Pole mounted cobrahead	Fluorescent	30'	Yes	Yes	SW corner of parking lot	None	Vegetation	Replace with Viper type III amber LED with full 360 degree shield	\$1,400.00
61	30.293887 -87.449176	14709 Perdido Key Dr	Wall/ceiling light	Incandescent	8'-10'	Yes	Yes	Garage & balconies	None	None	Replace wall mount with WRDS amber LED fixture; ceiling garage mount with Hydrel 4762 WildlifeSeries ceiling mount amber LEDs with beach side shields	120+fixture
62	30.294189 -87.447823	14623 Perdido Key Dr	Shoebox pole mount	HPS	25'	Yes	Yes	Throughout parking lot	None	None	Replace each fixture with Shoebox type III 30W amber LED	\$3,600.00
63	30.294560 -87.445497	14511 Perdido Key Dr	Pole mount	Halide	35'	Yes	Yes	Parking deck on E & W sides	None	Vegetation	Replace each fixture with Shoebox type III 30W amber LED	\$6,000.00
64	30.295095 -87.445436	14514 Perdido Key Dr	Pole mounted sign and halides	Fluorescent	20'-30'	Yes	Yes	Throughout parking lot, signs S side of property and on building	None	None	Illuminate sign with fully shielded low watt amber LED, remove fluorescent bulbs, and replace each fixture with Shoebox type III 30W amber LED	\$4,800.00
65	30.294693 -87.445070	14511 Perdido Key Dr	Ceiling mount	Yellow incandescent or fluorescent	10'	Yes	Yes	Parking decks by garage	None	None	Replace with WRDS amber LED fixture	Unknown
66	30.294438 -87.444240	14455 Perdido Key Dr	Ceiling mount	LPS	10'	Yes	Yes	Ceiling of covered parking area	None	None	Replace with WRDS amber LED fixture	Unknown
67	30.294449 -87.44449	14455 Perdido Key Dr	Wall mount	Incandescent	8'	Yes	Yes	Entry lights on S side of building	None	None	Replace with WRDS amber LED fixture	\$60.00
68	30.294873 -87.441399	14405 Perdido Key Dr	Ceiling and wall mount	Incandescent	10'	Yes	Yes	Stairwell on S side of building on E and W side	None	None	Replace with WRDS amber LED fixture	\$360.00
69	30.295884 -87.441271	14250 Perdido Key Dr	Multiple Pole and wall mounted	HPS, fluorescent, incandescent	10'-30'	Yes	Yes	S elevation of building nad perimeter of parking lot	None	None	Illuminate sign with fully shielded low watt amber LED, remove fluorescent bulbs, and replace each fixture with Shoebox type III 30W amber LED	\$4,400.00
70	30.294935 -87.440975	14237 Perdido Key Dr	Wall and pole mounts	Incandescent	8'	Yes	Yes	West building-SW side of E access, and by pool	None	None	Replace each pole mount with Shoebox type III 30W amber LED, and wall mount with appropriate amber LED	\$6,000.00
71	30.295033 -87.440236	14237 Perdido Key Dr	Wall, ceiling, and pole mounts	Incandescent, HPS	10'-20'	Yes	Yes	S side of E building, around pool, spa, and gym	None	None	Replace each pole mount with Shoebox type III 30W amber LED, and wall mount with WRDS amber LED fixture	\$3,600.00
72	30.294998 -87.440508	14239 Perdido Key Dr	Ceiling lights	Interior chandelier	10'	Yes	Yes	Interior ceiling	None	None	Tint glass to reduce light transmission	Unknown
73	30.295085 -87.439762	14237 Perdido Key Dr	Ceiling, wall, and pole mounts	Various types	10'-30'	Yes	Yes	Along S side of building by spa, gym, and pool	None	None	Replace each pole mount with Shoebox type III 30W amber LED, and wall mount with WRDS amber LED fixture	\$4,200.00
74	30.295940 -87.435469	13937 Perdido Key Dr	Pole mount	HPS	15'	Yes	Yes	W parking lot	None	None	Replace with WRDS amber LED fixture	\$6,000.00

75	30.295740 -87.435071	13937 Perdido Key Dr	Ceiling mount	Incandescent	15'	Yes	Yes	Pool ceiling	None	None	Replace with WRDS amber LED fixture	\$360.00
76	30.295701 -87.434720	13937 Perdido Key Dr	Pole mount	HPS	4'-20'	Yes	Yes	E side of building in parking lot next to gazebo	None	None	Replace each fixture with Shoebox type III 30W amber LED	\$600.00
77	30.296814 -87.433873	13886 Perdido Key Dr	Front sign	Fluorescent	30'	Yes	Yes	In front of building	None	None	Illuminate sign with fully shielded low watt amber LED, remove fluorescent bulbs	\$600.00
78	30.295968 -87.432917	14623 Perdido Key Dr	Pole and wall mounts	Fluorescent, incandescent, halide	10'-30'	Yes	Yes	Parking lot and balcony	None	None	Replace each pole mount with Shoebox type III 30W amber LED, and wall mount with WRDS amber LED fixture	\$660.00
79	30.296040 -87.432397	14623 Perdido Key Dr	Wall mount	Fluorescent	8'	Yes	Yes	Pool deck S side of building	None	None	Replace with WRDS amber LED fixture	\$120.00
80	30.297336 -87.431989	13700 Perdido Key Dr	Wall and pole mounts	Fluorescent and HPS	8'-30'	Yes	Yes	Parking lot and exterior of buildings	None	None	Replace each pole mount with Shoebox type III 30W amber LED, and wall mount with appropriate amber LED	\$6,780.00
81	30.296186 -87.431673	13753 Perdido Key Dr	Wall mount and interior lights	Fluorescent	10'	Yes	Yes	Around pool on S side of building	None	None	Tint glass to reduce light transmission	Unknown
82	30.296420 -87.430868	13661 Perdido Key Dr	Wall mount	Fluorescent	10'	Yes	Yes	Pool and balcony lights S side of building	None	None	Replace bulb with low watt amber LED	\$40.00
83	30.296776 -87.430736	13661 Perdido Key Dr	Pole mount	Metal Halide	25'	Yes	Yes	Parking lot on E side of building	None	None	Replace with Viper type III amber LED with full 360 degree shield	\$1,400.00
84	30.296695 -87.428503	13599 Perdido Key Dr	Interior lights	Fluorescent	12'	Yes	Yes	Indoor pool lights on W and center building	None	None	Tint glass to reduce light transmission	Unknown
85	30.297306 -87.427973	13599 Perdido Key Dr	Pole mounts	HPS	25'	Yes	Yes	Parking lot between E and center building	None	None	Replace with Viper type III amber LED with full 360 degree shield	\$2,800.00
86	30.297367 -87.427346	13599 Perdido Key Dr	Wall mount	Fluorescent	12'	Yes	Yes	E entry to pool deck	None	None	Replace bulb with low watt amber LED	\$20.00
87	30.297448 -87.427255	W of 13555 Sandy Key Dr	Open bottom ; pole mount	Metal Halide	30'	Yes	Yes	Public beach access	None	None	Replace with Viper type III amber LED with full 360 degree shield	\$1,400.00
88	30.297002 -87.426850	13555 Sandy Key Dr	Interior lights	Fluorescent	12'	Yes	Yes	Indoor pool lights	None	None	Tint glass to reduce light transmission	Unknown
89	30.297234 -87.426352	W of 13575 Sandy Key Dr	Multiple pole mounts and interior lights	Fluorescent and metal halide	12'-30'	Yes	Yes	In parking lot and surrounding interior pool	None	None	Replace each pole mount with Shoebox type III 30W amber LED and tint glass to reduce light transmission	\$600.00
91	30.297362 -87.425512	13575 Sandy Key Dr	Ceiling mount	Incandescent	30'	Yes	Yes	Balcony on E side of W building	None	None	Replace bulb with low watt amber LED	\$20.00
92	30.297228 -87.425050	13575 Sandy Key Dr	Interior lights	Fluorescent	12'	Yes	Yes	Center tower interior pool and access	None	None	Tint glass to reduce light transmission	Unknown
95	30.297515 -87.423851	13575 Sandy Key Dr	Pole mounts	Metal Halide	30'	Yes	Yes	W and E corner of E parking lot	None	None	Replace each pole mount with Shoebox type III 30W amber LED	\$1,200.00
98	30.298218 -87.420857	13335 Johnson Beach Rd	Pole and wall mounts	HPS, LED	10'-20'	Yes	Yes	E surface parking lot, wall mounts on parking garage (NW, NE, SE, SW corners of 2nd story)	None	None	Replace with WRDS amber LED fixture	\$7,200.00
99	30.298218 -87.420857	13335 Johnson Beach Rd	Ceiling mounts	Fluorescent and box LED	15'	Yes	Yes	On ceiling of parking garage	None	None	Replace with Hydrel 4762 Wildlife Series ceiling mount amber LEDs with house-side shield.	Unknown
100	30.298218 -87.420857	13335 Johnson Beach Rd	Ceiling mount	CFC	15'	Yes	Yes	On ceiling of breeze way	None	None	Replace with WRDS amber LED fixture	\$480.00
101	30.298218 -87.420857	13335 Johnson Beach Rd	2 cobrahead pole mounts, 1 wall mount	LED	15'-30'	Yes	Yes	N side entrance	None	None	Replace with WRDS amber LED fixture	\$1,200.00

102	30.288073 -87.483137	16257 Perdido Key Dr	Open bottom pole mount	HPS	20'	Yes	Yes	NW corner of residence	None	None	Replace with Viper type III amber LED with full 360 degree shield	\$1,400.00
103	30.288345 -87.481839	16101 Perdido Key Dr	Open bottom pole mount	HPS	20'	Yes	No	NW corner of residence on gravel parking area	None	None	Replace with Viper type III amber LED with full 360 degree shield	\$1,400.00
104	30.294217 -87.451740	Intersection of River Rd & Perdido Key Dr	Cobrahead pole mount	HPS	25'	Yes	Yes	NW corner of River Rd & Perdido Key Dr	Full 360 metal shield	None	Replace with Viper type III amber LED with full 360 degree shield	\$1,400.00
105	30.294096 -87.450862	14765 Perdido Key Dr	Open bottom pole mount	HPS	25'	Yes	Yes	NW corner of site byt fenced Sunpster pad	180 metal shield	Buildings	Replace with Viper type III amber LED with full 360 degree shield	\$1,400.00
106	30.294379 -87.448737	Between 14623 & 14709 Perdido Key Dr	Open bottom pole mount	HPS	25'	Yes	Yes	S side of ROW, just N of fire hydrant	180 metal shield	None	Replace with Viper type III amber LED with full 360 degree shield	\$1,400.00
107	30.294623 -87.448774	Between 14580 & 14590 Perdido Key Dr	Open bottom pole mount	HPS	25'	Yes	Yes	N side of ROW just W of drive connection to condo	180 metal shield	None	Replace with Viper type III amber LED with full 360 degree shield	\$1,400.00
108	30.294924 -87.446468	14530 Perdido Key Dr	Shoebox pole mount	HPS	25'	Yes	Yes	SW corner of site	None	None	Repalce with Shoebox type III 30W amber LED	\$600.00

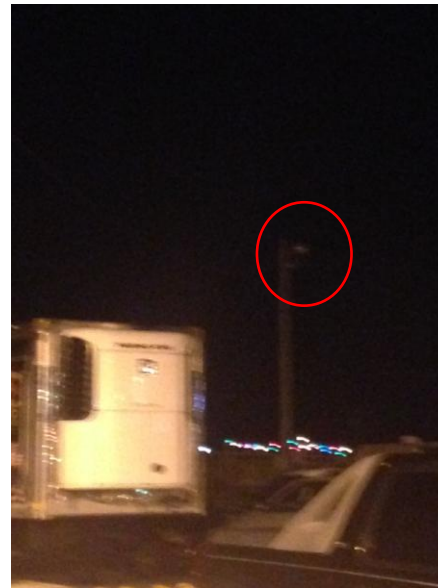
Exhibit B

Individual Records

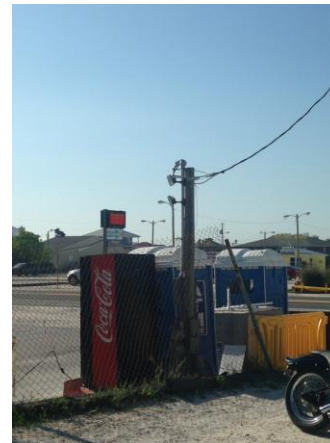
Location	30.281056, -87.517851
Record Number	PK-01a
Date	3/29/2015
Time	8:10PM
Team Member Name	KDJ
Address	17401 Perdido Key Drive
Fixture Function Type	Two Cobrahead on Single Pole to illuminate parking lot
Lame Type	Sodium Vapor (HPS)
Location on Structure	Pole Mount
Apparent Condition	Good
Mounting Height	Approx. 30'
On Conservation Lands	No
Light Visible from Beach	Yes
Was light on?	Yes
Fixture Location Description	East side of Flora Bama
Shielding Type	No shield
Light Barriers from Beach	No
Recommendations	Replace with Viper type 3 amber LED with full 360 degree shield



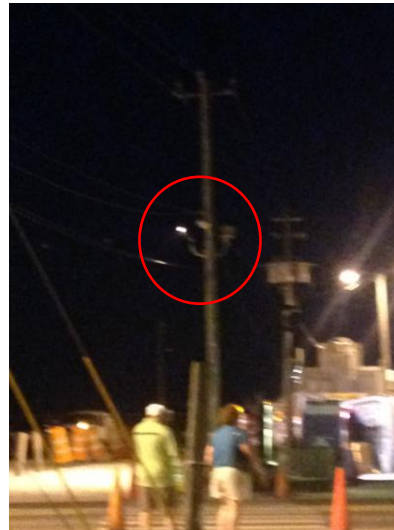
Location	30.280997, -87.517715
Record Number	PK-01b
Date	3/29/15
Time	8:10PM
Team Member Name	KDJ
Address	17401 Perdido Key Drive
Fixture Function Type	Shoebox on single pole to illuminate parking lot
Lame Type	Halide
Location on Structure	Pole Mount
Apparent Condition	Good
Mounting Height	Approx. 25'
On Conservation Lands	No
Light Visible from Beach	Yes
Was light on?	No
Fixture Location Description	SE corner of Flora-Bama
Shielding Type	Box
Light Barriers from Beach	No
Recommendations	Replace each fixture with Shoebox Type-III 30W amber LED



Location	30.281486, -87.517946
Record Number	PK-01c
Date	3/29/15
Time	8:10PM
Team Member Name	KDJ
Address	17401 Perdido Key Drive
Fixture Function Type	2 Box fixtures on single pole to illuminate entry
Lame Type	Halogen
Location on Structure	Pole Mount
Apparent Condition	Good
Mounting Height	Approx. 25'
On Conservation Lands	No
Light Visible from Beach	Yes
Was light on?	No
Fixture Location Description	SE corner of Flora-Bama
Shielding Type	Box
Light Barriers from Beach	No
Recommendations	Remove

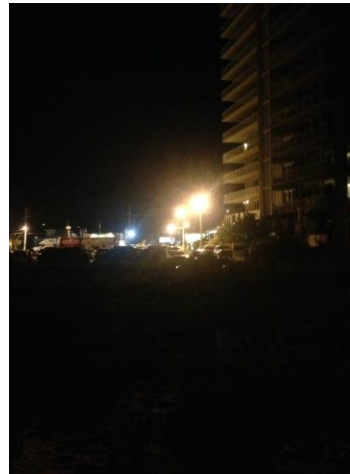


Location	30.281793 -87.517931
Record Number	PK-01d
Date	3/29/15
Time	8:12 PM
Team Member Name	KDJ
Address	17401 Perdido Key Drive
Fixture Function Type	3 Shoebox fixtures on single pole used to illuminate parking lot
Lame Type	HPS
Location on Structure	Pole Mount
Apparent Condition	Good
Mounting Height	Approx. 25'
On Conservation Lands	No
Light Visible from Beach	Yes
Was light on?	Yes
Fixture Location Description	NE corner of Flora-Bama
Shielding Type	Box
Light Barriers from Beach	No
Recommendations	Replace each fixture with Shoebox Type-III 30W amber LED



From Beach

Location	30.281332, -87.517487
Record Number	PK-01e
Date	3/29/15
Time	8:21PM
Team Member Name	KDJ
Address	17401 Perdido Key Drive
Fixture Function Type	Two Box Mounted on Single Pole to Illuminate Parking Lot
Lame Type	HPS
Location on Structure	Pole Mount
Apparent Condition	Good
Mounting Height	Approx. 30'
On Conservation Lands	No
Light Visible from Beach	Yes
Was light on?	Yes
Fixture Location Description	West side of Mediterra Condos, E Side of Flora-Bama Parking Lot
Shielding Type	Box
Light Barriers from Beach	No
Recommendations	Replace each fixture with Shoebox Type-III 30W amber LED



Location	30.281658, -87.517506
Record Number	PK-01f
Date	3/29/15
Time	8:21PM
Team Member Name	KDJ
Address	17401 Perdido Key Drive
Fixture Function Type	One Box Mounted on Single Pole to Illuminate Parking Lot
Lame Type	HPS
Location on Structure	Pole Mount
Apparent Condition	Good
Mounting Height	Approx. 30'
On Conservation Lands	No
Light Visible from Beach	Yes
Was light on?	Yes
Fixture Location Description	West side of Mediterra Condos, E Side of Flora-Bama Parking Lot, along S side of ROW
Shielding Type	Box
Light Barriers from Beach	No
Recommendations	Replace each fixture with Shoebox Type-III 30W amber LED



From Beach

Location	30.281967 -87.517753
Record Number	PK-2
Date	3/29/2015
Time	8:14 PM
Team Member Name	KDJ
Address	17395 Perdido Key Drive
Fixture Function Type	Illuminated Sign
Lame Type	Fluorescent
Location on Structure	South Elevation of Building
Apparent Condition	Good
Mounting Height	15'
On Conservation Lands	No
Light Visible from Beach	Yes
Was light on?	Yes
Fixture Location Description	North Side of PK Blvd on South Elevation of Bldg
Shielding Type	No Shield
Light Barriers from Beach	No
Recommendations	Illuminate sign with fully shield low wattage amber led fixtures and remove fluorescent bulbs



Location	30.282533 -87.517506
Record Number	PK-3a
Date	3/29/15
Time	8:14 PM
Team Member Name	KDJ
Address	17395 Perdido Key Drive
Fixture Function Type	Shoebox to illuminate parking lot
Lame Type	Metal Hale
Location on Structure	Pole Mount
Apparent Condition	Good
Mounting Height	Approx. 25'
On Conservation Lands	No
Light Visible from Beach	Yes
Was light on?	Yes
Fixture Location Description	E of Flora-bama lotto, W of Waffle House
Shielding Type	No Shield
Light Barriers from Beach	No
Recommendations	Replace each fixture with Shoebox Type-III 30W amber LED



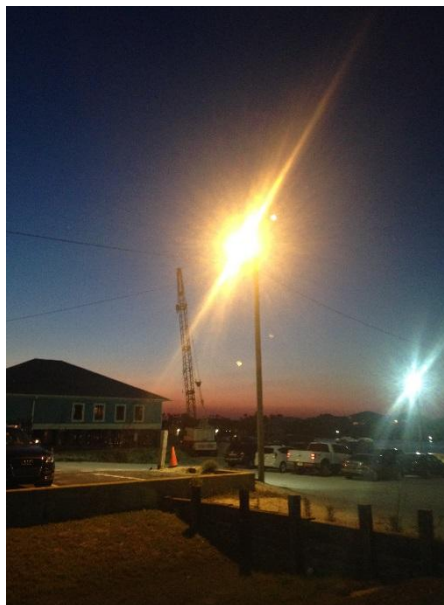
Location	30.282533 -87.517506
Record Number	PK-3b
Date	3/29/15
Time	8:25 PM
Team Member Name	KDJ
Address	17395 Perdido Key Dr
Fixture Function Type	2 Fixtures; One Cobrahead to illuminate ROW and One Shobox to illuminate parking of Liquor Store
Lame Type	HPS
Location on Structure	Pole Mount
Apparent Condition	Good
Mounting Height	Approx. 25'
On Conservation Lands	No
Light Visible from Beach	Yes
Was light on?	Yes
Fixture Location Description	Pole near SW Corner of Waffle House
Shielding Type	No Shield
Light Barriers from Beach	Yes, Buildings
Recommendations	Replace cobrahead with Viper type 3 amber LED and shoebox with Shoebox Type-III 30W amber LED



Location	30.282206, -87.517445
Record Number	PK-3c
Date	3/29/15
Time	8:25 PM
Team Member Name	KDJ
Address	17395 Perdido Key Dr
Fixture Function Type	2 ShoeBox Fixtures Mounted on NW corner of building illuminating rear parking lot area
Lame Type	Halide
Location on Structure	On Rooftop of building
Apparent Condition	Good
Mounting Height	15'
On Conservation Lands	No
Light Visible from Beach	Yes
Was light on?	Yes
Fixture Location Description	On rooftop of building at NW corner
Shielding Type	No Shield
Light Barriers from Beach	Yes, Buildings
Recommendations	Replace each fixture with Shoebox Type-III 30W amber LED



Location	30.282543, -87.517504
Record Number	PK-3d
Date	3/29/15
Time	8:25 PM
Team Member Name	KDJ
Address	17350 Perdido Key Dr (Flora-Bama Yacht Club)
Fixture Function Type	2 ShoeBox Fixtures Mounted on pole to illuminate parking lot area
Lame Type	1 Halide and 1HPS
Location on Structure	Pole Mount
Apparent Condition	Good
Mounting Height	30'
On Conservation Lands	No
Light Visible from Beach	Yes
Was light on?	Yes
Fixture Location Description	Near NW corner of Waffle House Property
Shielding Type	No Shield
Light Barriers from Beach	Yes, Buildings
Recommendations	Replace each fixture with Shoebox Type-III 30W amber LED



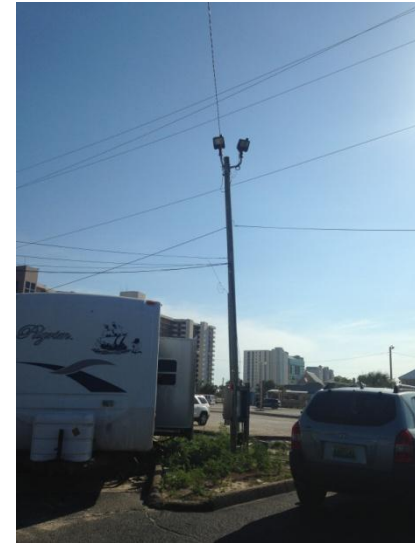
Location	30.282444, -87.517188
Record Number	PK-3e
Date	3/29/2015
Time	8:25 PM
Team Member Name	KDJ
Address	17395 Perdido Key Dr
Fixture Function Type	2 ShoeBox Fixtures Mounted on Aluminum Pole illuminating rear parking lot area
Lame Type	Halide
Location on Structure	Near NE corner of parking lot
Apparent Condition	Good
Mounting Height	20'
On Conservation Lands	No
Light Visible from Beach	Yes
Was light on?	Yes
Fixture Location Description	Near NE corner of parking lot
Shielding Type	No Shield
Light Barriers from Beach	No
Recommendations	Replace each fixture with Shoebox Type-III 30W amber LED



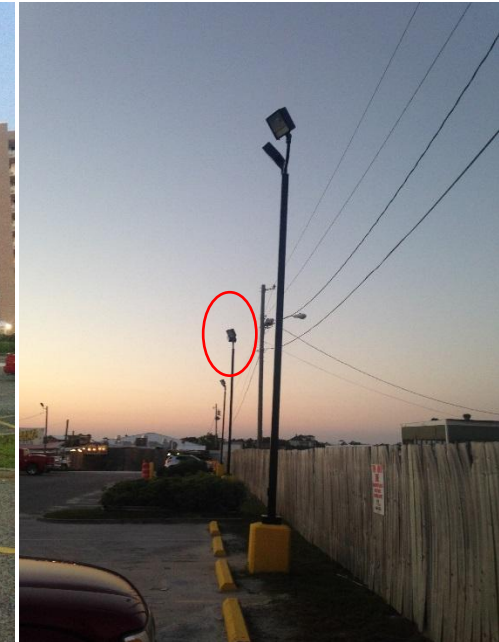
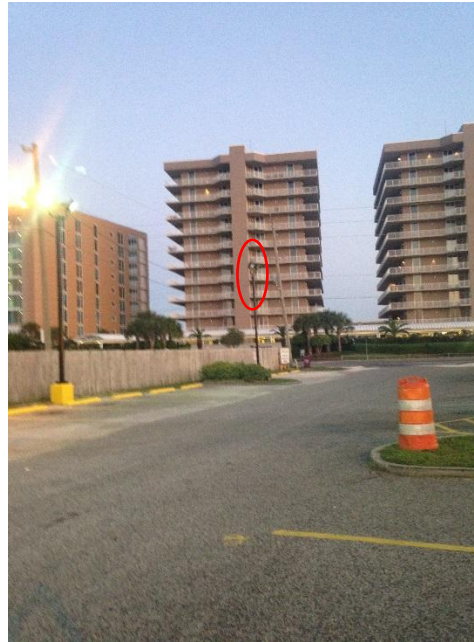
Location	30.282936, -87.517444
Record Number	PK-3f
Date	3/29/2015
Time	8:25 PM
Team Member Name	KDJ
Address	17350 Perdido Key Dr
Fixture Function Type	1 Shoe Box Fixture Mounted on Pole illuminating parking lot area
Lame Type	Halide
Location on Structure	At NW corner of the Yacht Club Bldg
Apparent Condition	Good
Mounting Height	25'
On Conservation Lands	No
Light Visible from Beach	Yes
Was light on?	Yes
Fixture Location Description	At NW corner of the Yacht Club Bldg; east of banner sign
Shielding Type	No Shield
Light Barriers from Beach	No
Recommendations	Replace each fixture with Shoebox Type-III 30W amber LED



Location	30.282298, -87.517946
Record Number	PK-3g
Date	3/29/2015
Time	8:25 PM
Team Member Name	KDJ
Address	17395 Perdido Key Dr
Fixture Function Type	2 Shoe Box Fixture Mounted on Pole illuminating parking lot area
Lame Type	HPS
Location on Structure	Near NW corner of Flora-Bama Liquor Store site
Apparent Condition	Good
Mounting Height	25'
On Conservation Lands	No
Light Visible from Beach	Yes
Was light on?	Yes
Fixture Location Description	In Landscape Island in Parking lot near NW corner of site
Shielding Type	No Shield
Light Barriers from Beach	No
Recommendations	Replace each fixture with Shoebox Type-III 30W amber LED



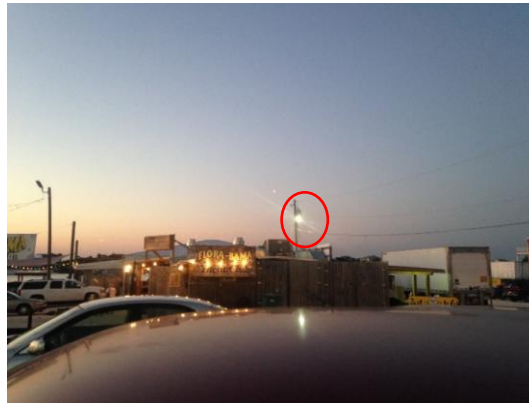
cation	30.282208, -87.517140
Record Number	PK-3H
Date	3/29/2015
Time	8:25 PM
Team Member Name	KDJ
Address	17395 Perdido Key Dr
Fixture Function Type	2 Shoe Box Fixtures Mounted on Aluminum Pole illuminating parking lot area
Lame Type	Halide
Location on Structure	Near SE corner of parking lot
Apparent Condition	Good
Mounting Height	20'
On Conservation Lands	No
Light Visible from Beach	Yes
Was light on?	Yes
Fixture Location Description	Near SE corner of parking lot, Just south of Landscape Island
Shielding Type	No Shield
Light Barriers from Beach	No
Recommendations	Replace each fixture with Shoebox Type-III 30W amber LED



Location	30.282249, -87.517192
Record Number	PK-3i
Date	3/29/2015
Time	8:25 PM
Team Member Name	KDJ
Address	17395 Perdido Key Dr
Fixture Function Type	2 Shoe Box Fixtures Mounted on Aluminum Pole illuminating parking lot area
Lame Type	Halide
Location on Structure	Near Center of Eastern Property Line
Apparent Condition	Good
Mounting Height	20'
On Conservation Lands	No
Light Visible from Beach	Yes
Was light on?	Yes
Fixture Location Description	Center of Eastern Property Line just West of wooden fence
Shielding Type	No Shield
Light Barriers from Beach	No
Recommendations	Replace each fixture with Shoebox Type-III 30W amber LED



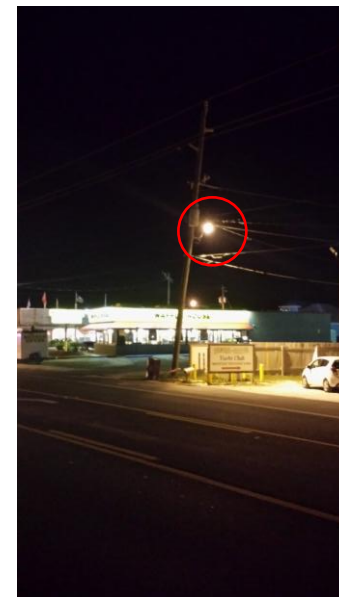
Location	30.283129, -87.517124
Record Number	PK-3J
Date	3/29/2015
Time	8:25 PM
Team Member Name	KDJ
Address	17350 Perdido Key Dr
Fixture Function Type	1 Shoe Box Fixture Mounted on Pole illuminating parking lot area
Lame Type	Halide
Location on Structure	At NE corner of the Yacht Club Bldg
Apparent Condition	Good
Mounting Height	30'
On Conservation Lands	No
Light Visible from Beach	Yes
Was light on?	Yes
Fixture Location Description	At NE corner of the Yacht Club Bldg;
Shielding Type	No Shield
Light Barriers from Beach	No
Recommendations	Replace each fixture with Shoebox Type-III 30W amber LED



Location	30.282921, -87.517620
Record Number	PK-3K
Date	3/29/2015
Time	8:25 PM
Team Member Name	KDJ
Address	17350 Perdido Key Dr
Fixture Function Type	1 Shoe Box Fixture Mounted on Pole illuminating parking lot area
Lame Type	Halide
Location on Structure	Near NW corner of site
Apparent Condition	Good
Mounting Height	25'
On Conservation Lands	No
Light Visible from Beach	Yes
Was light on?	Yes
Fixture Location Description	Near NW corner of the Yacht Club Property; west of banner sign
Shielding Type	No Shield
Light Barriers from Beach	No
Recommendations	Replace each fixture with Shoebox Type-III 30W amber LED



Location	30.281962, -87.517174
Record Number	PK-3L
Date	3/29/2015
Time	8:25 PM
Team Member Name	KDJ
Address	17395 Perdido Key Dr
Fixture Function Type	1 Shoe Box Fixture Mounted on Pole illuminating parking lot area
Lame Type	HPS
Location on Structure	SE Corner of Waffle House Property
Apparent Condition	Good
Mounting Height	25'
On Conservation Lands	No
Light Visible from Beach	Yes
Was light on?	Yes
Fixture Location Description	SE corner of Waffle House just South of ROW
Shielding Type	No Shield
Light Barriers from Beach	No
Recommendations	Replace each fixture with Shoebox Type-III 30W amber LED



Location	30.282257, -87.517176
Record Number	PK-04a
Date	3/29/2015
Time	8:25 PM
Team Member Name	KDJ
Address	17348 Perdido Key Dr
Fixture Function Type	1 Cobra Head and 1 Shoe box Fixture Mounted on Pole illuminating lot area
Lame Type	HPS
	Center of Western Property line of Rib
Location on Structure	Shack
Apparent Condition	Good
Mounting Height	25'
On Conservation Lands	No
Light Visible from Beach	Yes
Was light on?	Yes
Fixture Location Description	Center of Western Property line of Rib Shack
Shielding Type	No Shield
Light Barriers from Beach	No
Recommendations	Replace existing shoe box with Shoebox Type-III 30W amber LED and cobrahead with Viper Type III Amber LED with 360 shield



Location	30.282145, -87.516889
Record Number	PK-04b
Date	3/29/2015
Time	8:25 PM
Team Member Name	KDJ
Address	17348 Perdido Key Dr
Fixture Function Type	1 Cobra Head Fixture Mounted on Pole illuminating lot area
Lame Type	HPS
Location on Structure	Just to the southeast of Rib Shack Building
Apparent Condition	Good
Mounting Height	20'
On Conservation Lands	No
Light Visible from Beach	Yes
Was light on?	Yes
Fixture Location Description	SE of Rib Shack Building
Shielding Type	No Shield
Light Barriers from Beach	No
Recommendations	Replace with Viper Type III Amber LED with 360 shield



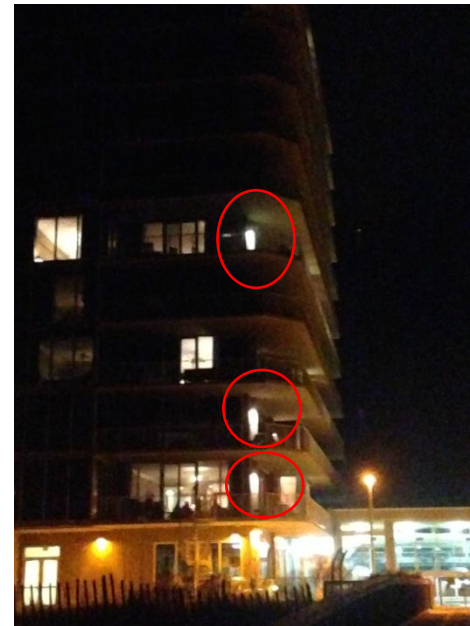
PK13	
Location	30.281211 -87.517421
Record Number	PK #13
Date	03/29/15
Time	8:34
Team Member Name	Keith Johnson
Address	17359 Perdido Key Dr (W of Mediterranean Condo)
Fixture Function Type	Illuminate balcony
Lamp Type	Incandescent or florescent white can
Location on Structure	Wall mount, W side of building
Apparent Condition	Good
Mounting Height	8' above each floor; 10 floors, 2/floor
On Conservation Lands?	No
Light Visible from beach?	Yes
Was light on?	Only on 4 th and 10 th floor
Fixture Location Description	On W side of building
Shielding Type	Can lights
Light Barriers from Beach	Yes
Recommendations	Replace bulb with low watt amber LED



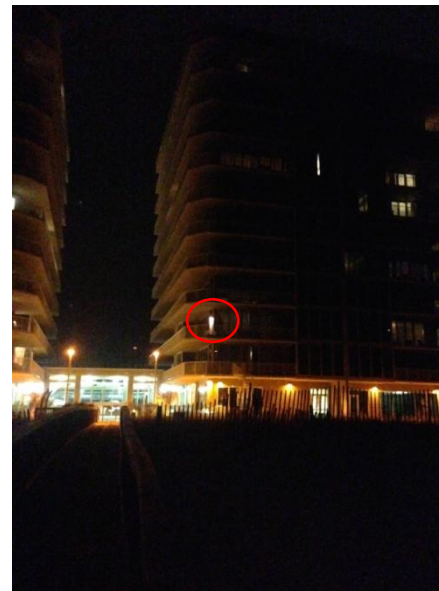
PK14	
Location	30.281167 -87.516983
Record Number	PK #14
Date	03/29/15
Time	8:47
Team Member Name	Keith Johnson
Address	17359 Perdido Key Dr (Glass enclosure between two towers)
Fixture Function Type	Interior pool deck lighting
Lamp Type	Fluorescent
Location on Structure	Above pool between buildings
Apparent Condition	Good
Mounting Height	10'
On Conservation Lands?	No
Light Visible from beach?	Yes
Was light on?	Yes
Fixture Location Description	Inside glass enclosure
Shielding Type	No
Light Barriers from Beach	Glass in building
Recommendations	Tint glass to reduce light transmission



PK15	
Location	30.281101 -87.517030
Record Number	PK #15
Date	03/29/15
Time	8:45
Team Member Name	Keith Johnson
Address	17359 Perdido Key Dr (Mediterranean Condos)
Fixture Function Type	Illuminate balcony
Lamp Type	Incandescent or fluorescent white can
Location on Structure	SE corner of building & on every floor
Apparent Condition	Good
Mounting Height	8' above floor
On Conservation Lands?	No
Light Visible from beach?	Yes
Was light on?	Floors 2,3,6 were on
Fixture Location Description	SE corner of building
Shielding Type	Can
Light Barriers from Beach	No
Recommendations	Replace bulb with 5 watt amber LED



PK16	
Location	30.281156 -87.516901
Record Number	PK #16
Date	03/29/15
Time	8:49
Team Member Name	Keith Johnson
Address	17359 Perdido Key Dr (Mediterranean Condos)
Fixture Function Type	Illuminate balcony
Lamp Type	Incandescent or fluorescent white can
Location on Structure	SE corner of building on all 10 floors, but only 1 light on
Apparent Condition	Good
Mounting Height	8' above floor
On Conservation Lands?	No
Light Visible from beach?	Yes
Was light on?	Yes but only one
Fixture Location Description	SE corner of building on 3 rd floor 2 nd balcony
Shielding Type	Can
Light Barriers from Beach	No
Recommendations	Replace bulb with 5 watt amber LED



PK17	
Location	30.281548 -87.516649
Record Number	PK #17
Date	03/29/15
Time	8:54
Team Member Name	Keith Johnson
Address	17357 Perdido Key Dr (Mediterranean Condos)
Fixture Function Type	Illuminate covered parking area
Lamp Type	Incandescent
Location on Structure	Ceiling mount under arch canopy, 2 fixtures
Apparent Condition	Good
Mounting Height	12'
On Conservation Lands?	No
Light Visible from beach?	Yes
Was light on?	Yes
Fixture Location Description	Under arch (white canopy)
Shielding Type	No
Light Barriers from Beach	Vegetation
Recommendations	Replace fixture with appropriate low watt amber LED



PK19	
Location	30.281314 -87.516413
Record Number	PK #19
Date	03/29/15
Time	9:00
Team Member Name	Keith Johnson
Address	17357 Perdido Key Drive
Fixture Function Type	Illuminate pool deck
Lamp Type	Amber, incandescent
Location on Structure	On S side of building 1 st floor
Apparent Condition	Good
Mounting Height	8'
On Conservation Lands?	No
Light Visible from beach?	Yes
Was light on?	Yes
Fixture Location Description	Can mount on S side of building
Shielding Type	No
Light Barriers from Beach	No
Recommendations	Replace with 5 watt amber LED



PK20	
Location	30.281601 -87.516812
Record Number	PK #20
Date	03/29/15
Time	9:03
Team Member Name	Keith Johnson
Address	17359 Perdido Key Drive
Fixture Function Type	Illuminate covered parking area
Lamp Type	White, fluorescent
Location on Structure	On ceiling of parking canopy immediately N of building
Apparent Condition	Good
Mounting Height	10'-12'
On Conservation Lands?	No
Light Visible from beach?	Yes
Was light on?	Yes
Fixture Location Description	1 st floor, NE corner
Shielding Type	No
Light Barriers from Beach	Yes, vegetation
Recommendations	Replace with appropriate low watt amber LED fixture



View from beach

PK21	
Location	30.281675 -87.515124
Record Number	PK #21
Date	03/29/15
Time	9:10
Team Member Name	Keith Johnson
Address	17287 Perdido Key Drive (Spanish Key)
Fixture Function Type	Illuminate pool deck
Lamp Type	HPS & halide
Location on Structure	Surrounding pool deck
Apparent Condition	Good
Mounting Height	15'
On Conservation Lands?	No
Light Visible from beach?	Yes
Was light on?	Yes
Fixture Location Description	10 fixtures around perimeter of pool deck
Shielding Type	Box
Light Barriers from Beach	Primary Dune
Recommendation Notes	Some lights are sodium vapor or either metal halide. All are shielded. Lights reflect off pool and illuminate entire south elevation of building casting a glow on the beach. Replace each fixture with Shoebox Type-III 30W amber LED



PK22	
Location	30.282511 -87.514702
Record Number	PK #22
Date	03/29/15
Time	9:16
Team Member Name	Keith Johnson
Address	17324 Perdido Key Drive
Fixture Function Type	Pole mount street light; illuminate right of way
Lamp Type	Sodium vapor
Location on Structure	N/A
Apparent Condition	Good
Mounting Height	~30'
On Conservation Lands?	No
Light Visible from beach?	Yes
Was light on?	Yes
Fixture Location Description	Pole mount sign on edge of right of way
Shielding Type	No
Light Barriers from Beach	Vegetation/Building
Recommendation	Replace with Viper type amber LED with 360 shield

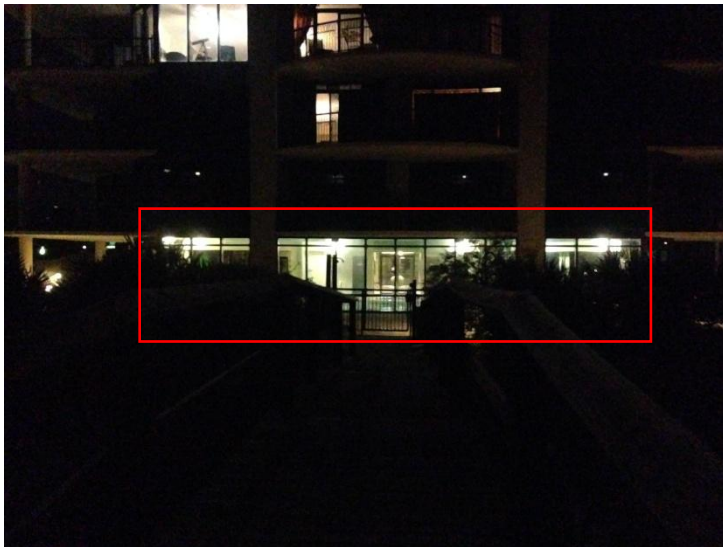


View from beach

PK23	
Location	30.281913 -87.513151
Record Number	PK #23
Date	03/29/15
Time	9:23
Team Member Name	Keith Johnson
Address	17253 Perdido Key Drive
Fixture Function Type	Wall mount can to illuminate balcony
Lamp Type	Sodium vapor
Location on Structure	Balcony
Apparent Condition	Good
Mounting Height	~8' above floor
On Conservation Lands?	No
Light Visible from beach?	Yes
Was light on?	Yes
Fixture Location Description	3 rd unit from east
Shielding Type	Can
Light Barriers from Beach	No
Recommendation	Replace bulb with low watt amber LED



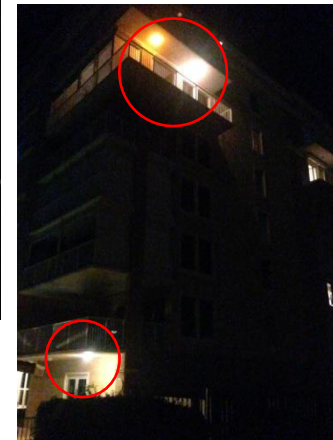
PK24	
Location	30.282367 -87.510745
Record Number	PK #24
Date	03/29/15
Time	9:28
Team Member Name	Keith Johnson
Address	17575 Perdido Key Drive (San Perdido Condo)
Fixture Function Type	6 ceiling mount; illuminate inside pool deck
Lamp Type	White, incandescent or fluorescent
Location on Structure	Pool deck ceiling
Apparent Condition	Good
Mounting Height	~10'
On Conservation Lands?	No
Light Visible from beach?	Yes
Was light on?	Yes
Fixture Location Description	Inside pool area, glass enclosed
Shielding Type	No
Light Barriers from Beach	Vegetation/hedge & dune
Recommendation	Tint windows to reduce light transmission



PK25	
Location	30.283027 -87.510726
Record Number	PK #25
Date	03/29/15
Time	9:30
Team Member Name	Keith Johnson
Address	17075 Perdido Key Drive (San Perdido Condo)
Fixture Function Type	Several shoe box fixtures mounted on single pole; illuminate parking lot & sign
Lamp Type	Metal halide
Location on Structure	Around perimeter of parking lot
Apparent Condition	Good
Mounting Height	~12'-15'
On Conservation Lands?	No
Light Visible from beach?	Yes
Was light on?	Yes
Fixture Location Description	On landscape island, E of drive connection
Shielding Type	No Shield
Light Barriers from Beach	Yes
Recommendation Notes	There are several shielded sodium vapor light and 1 bright metal halide fixture being used to illuminate San Perdido sign, Replace each fixture with Shoebox Type-III 30W amber LED



PK26	
Location	30.282519 -87.509947
Record Number	PK #26
Date	03/29/15
Time	9:38
Team Member Name	Keith Johnson
Address	17131 Perdido Key Drive (Club Cabana)
Fixture Function Type	3 Ceiling mount fixtures on 1 st floor, 2 under gazebo, 2 5 th floor balcony, illuminates pool deck & gazebo
Lamp Type	Incandescent, 1 amber light 5 th floor balcony
Location on Structure	2 under balcony of 1 st floor & 2 under gazebo, 2 5 th floor
Apparent Condition	Good
Mounting Height	~10' under gazebo, 12' under balconies
On Conservation Lands?	No
Light Visible from beach?	Yes
Was light on?	Yes
Fixture Location Description	S side of building
Shielding Type	No Shield
Light Barriers from Beach	No
Recommendation	Replace with amber shielded LED



PK27	
Location	30.283861 -87.507723
Record Number	PK #27
Date	03/29/15
Time	9:49
Team Member Name	Keith Johnson
Address	17002 Perdido Key Drive
Fixture Function Type	Pole Mount, illuminate ROW
Lamp Type	HPS
Location on Structure	N/A- on ROW
Apparent Condition	Good
Mounting Height	~25'
On Conservation Lands?	No
Light Visible from beach?	Yes
Was light on?	Yes
Fixture Location Description	Pole mounted street light N side of ROW @ SE corner of Playa de rio
Shielding Type	No
Light Barriers from Beach	Buildings
Recommendation	Replace with Viper type 3 amber LED with full 360 degree shield



View from beach

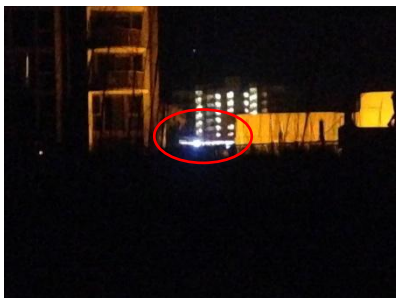
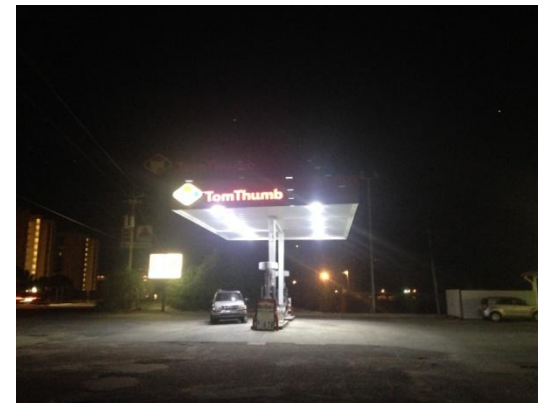
PK28	
Location	30.283062 -87.507236
Record Number	PK #28
Date	03/29/15
Time	9:53
Team Member Name	Keith Johnson
Address	16787 Perdido Key Drive (Shipwatch Condo Associates, westernmost townhome)
Fixture Function Type	Wall mount to illuminate balcony
Lamp Type	Incandescent
Location on Structure	3 rd floor, 2 nd living balcony
Apparent Condition	Good
Mounting Height	~8' above floor
On Conservation Lands?	No
Light Visible from beach?	Yes
Was light on?	Yes
Fixture Location Description	W side unit, S side, balcony,
Shielding Type	No
Light Barriers from Beach	No
Recommendation	Replace bulb with low watt amber LED



PK29	
Location	30.283126 -87.506867
Record Number	PK #29
Date	03/29/15
Time	9:57
Team Member Name	Keith Johnson
Address	16787 Perdido Key Drive (Shipwatch Condo Associates, eastern townhome)
Fixture Function Type	Wall mount to illuminate balcony
Lamp Type	Incandescent
Location on Structure	3 rd floor, 2 nd living balcony
Apparent Condition	Good
Mounting Height	~8' above floor
On Conservation Lands?	No
Light Visible from beach?	Yes
Was light on?	Yes on west unit, east unit off
Fixture Location Description	S side of building, balcony
Shielding Type	No
Light Barriers from Beach	No
Recommendation	Replace bulb with low watt amber LED



PK30	
Location	30.284256 -87.506192
Record Number	PK #30
Date	03/29/15
Time	10:02
Team Member Name	Keith Johnson
Address	16786a Perdido Key Drive (Tom Thumb)
Fixture Function Type	8- Ceiling mounted canopy lights illuminating dispenser island
Lamp Type	White LED
Location on Structure	Ceiling of canopy
Apparent Condition	Good
Mounting Height	~20'
On Conservation Lands?	No
Light Visible from beach?	Yes
Was light on?	Yes
Fixture Location Description	Under canopy, over gas pump islands
Shielding Type	No
Light Barriers from Beach	Buildings/vegetation
Recommendation	Replace with shielded amber LED

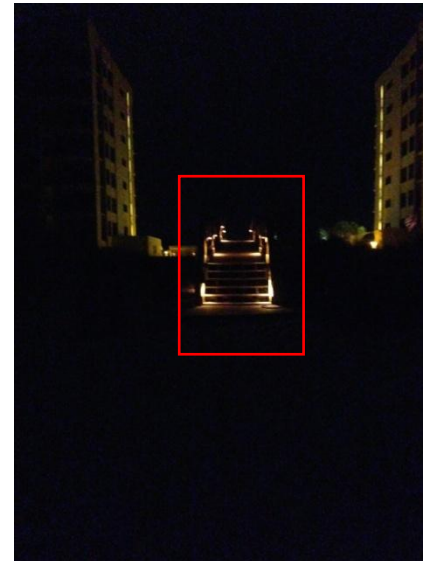


Taken from beach

PK31	
Location	30.283682 -87.504299
Record Number	PK #31
Date	03/29/15
Time	10:05
Team Member Name	Keith Johnson
Address	16777 Perdido Key Drive (Windward Condos)
Fixture Function Type	Wall mount to illuminate entry way
Lamp Type	HPS
Location on Structure	East tower of the Windward Condos, under green canopy office
Apparent Condition	Good
Mounting Height	~8'
On Conservation Lands?	No
Light Visible from beach?	Yes
Was light on?	Yes
Fixture Location Description	East tower of the Windward Condos, under green canopy office
Shielding Type	No
Light Barriers from Beach	Dune/vegetation
Recommendation	Replace bulb with low watt amber LED



PK32	
Location	30.283388 -87.504358
Record Number	PK #32
Date	03/29/15
Time	10:09
Team Member Name	Keith Johnson
Address	16777 Perdido Key Drive (Windward Condos)
Fixture Function Type	Shielded pathway lights to illuminate dune walkover
Lamp Type	Incandescent, amber
Location on Structure	Dune walkover
Apparent Condition	Good
Mounting Height	~2'
On Conservation Lands?	No
Light Visible from beach?	Yes
Was light on?	Yes
Fixture Location Description	On walkover, multiple fixtures
Shielding Type	No
Light Barriers from Beach	No
Recommendation	While fixtures are turtle friendly, they are directly over primary dune. They should be removed.



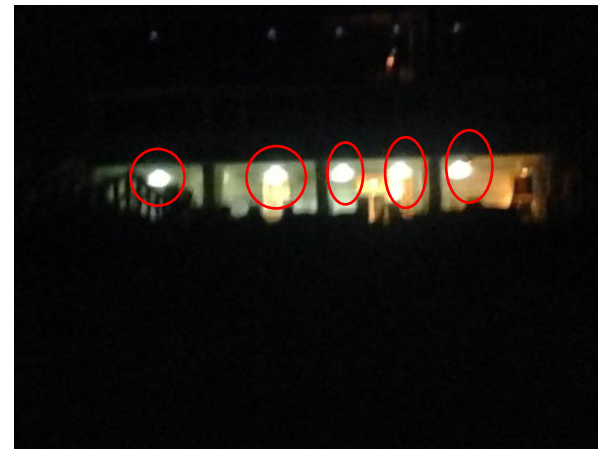
PK33	
Location	30.283721 -87.503867
Record Number	PK #33
Date	03/29/15
Time	10:13
Team Member Name	Keith Johnson
Address	16775 Perdido Key Drive (Windward Condos E tower)
Fixture Function Type	Wall mount to illuminate balcony
Lamp Type	Incandescent
Location on Structure	Balcony, 3 rd floor, 2 nd column of unit from the east
Apparent Condition	Good
Mounting Height	~7'
On Conservation Lands?	No
Light Visible from beach?	Yes
Was light on?	Yes
Fixture Location Description	Balcony, east of sliding door
Shielding Type	No
Light Barriers from Beach	No
Recommendation	Replace bulb with low watt amber LED



PK34	
Location	30.283867 -87.503288
Record Number	PK #34
Date	03/29/15
Time	10:17
Team Member Name	Keith Johnson
Address	16799 Perdido Key Drive (Seaside Villas)
Fixture Function Type	Wall mount sconce, 2 fixtures to illuminate balcony
Lamp Type	Incandescent
Location on Structure	1 st floor living balcony
Apparent Condition	Good
Mounting Height	~5'
On Conservation Lands?	No
Light Visible from beach?	Yes
Was light on?	Yes
Fixture Location Description	S side of building, on both sides of balcony
Shielding Type	No
Light Barriers from Beach	No
Recommendation	Replace bulb with low watt amber LED



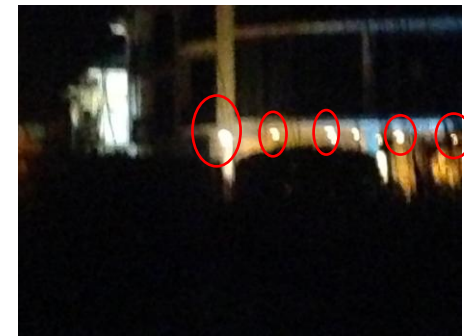
PK35	
Location	30.284198 -87.501329
Record Number	PK #35
Date	03/29/15
Time	10:22
Team Member Name	Keith Johnson
Address	16605 Perdido Key Drive (Seawatch)
Fixture Function Type	Ceiling mount to illuminate pool deck
Lamp Type	Incandescent or white LED
Location on Structure	On pool deck
Apparent Condition	Good
Mounting Height	~10'-12'
On Conservation Lands?	No
Light Visible from beach?	Yes
Was light on?	Yes
Fixture Location Description	6 fixtures on S side of building, pool deck
Shielding Type	No
Light Barriers from Beach	No
Recommendation	Replace fixtures with low watt amber LED fully shielded



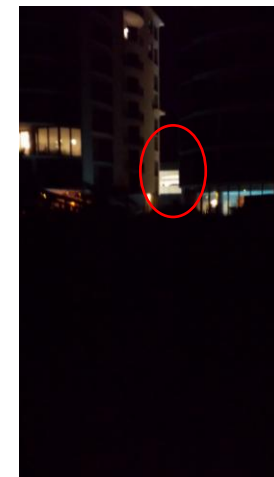
PK36	
Location	30.284507 -87.499501
Record Number	PK #36
Date	03/29/15
Time	10:30
Team Member Name	Keith Johnson
Address	16551 Perdido Key Drive
Fixture Function Type	Ceiling mount to illuminate pool deck located inside
Lamp Type	Fluorescent
Location on Structure	Interior pool deck
Apparent Condition	Good
Mounting Height	~10'
On Conservation Lands?	No
Light Visible from beach?	Yes
Was light on?	Yes
Fixture Location Description	Interior pool area
Shielding Type	Yes, glass of windows of building
Light Barriers from Beach	Glass windows
Recommendation	Tint glass to reduce transmission



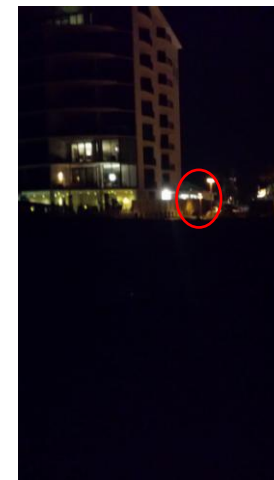
PK37	
Location	30.284538 -87.499151
Record Number	PK #37
Date	03/29/15
Time	10:32
Team Member Name	Keith Johnson
Address	16549 Perdido Key Drive (Marseilles, W Tower)
Fixture Function Type	Ceiling mounted to illuminate
Lamp Type	Fluorescent
Location on Structure	SW corner 1 st floor
Apparent Condition	Good
Mounting Height	~10'
On Conservation Lands?	No
Light Visible from beach?	Yes
Was light on?	Yes
Fixture Location Description	SW corner of W tower 1 st floor
Shielding Type	No
Light Barriers from Beach	Vegetation/Dune
Recommendation	Replace bulb with low watt amber LED



PK38	
Location	30.284569 -87.498677
Record Number	PK #38
Date	03/29/15
Time	10:36
Team Member Name	Keith Johnson
Address	16549 Perdido Key Drive (Marseilles, Middle Tower)
Fixture Function Type	Wall mount to illuminate breeze way
Lamp Type	Incandescent or white LED
Location on Structure	On back wall, on E side of building
Apparent Condition	Good
Mounting Height	~10'
On Conservation Lands?	No
Light Visible from beach?	Yes
Was light on?	Yes
Fixture Location Description	On back wall, on E side of building ground floor
Shielding Type	No
Light Barriers from Beach	Vegetation
Recommendation	Replace bulb with low watt amber LED



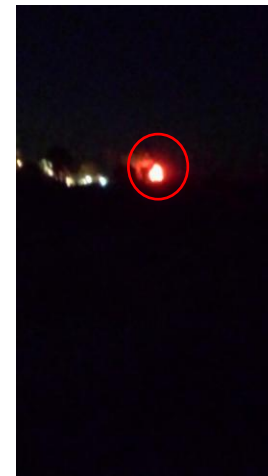
PK39	
Location	30.285002 -87.498461
Record Number	PK #39
Date	03/29/15
Time	10:40
Team Member Name	Keith Johnson
Address	16549 Perdido Key Drive (Marseilles, E Tower)
Fixture Function Type	Ceiling mount to illuminate covered parking area
Lamp Type	White florescent
Location on Structure	Ceiling of 1 st floor parking
Apparent Condition	Good
Mounting Height	~10'-12'
On Conservation Lands?	No
Light Visible from beach?	Yes
Was light on?	Yes
Fixture Location Description	Ceiling of 1 st floor parking, E building
Shielding Type	No
Light Barriers from Beach	Buildings
Recommendation	Replace fixtures with appropriate low watt amber LED



PK40	
Location	30.284671 -87.498365
Record Number	PK #40
Date	03/29/15
Time	10:43
Team Member Name	Keith Johnson
Address	16549 Perdido Key Drive (Marseilles, E Tower)
Fixture Function Type	Ceiling mount to illuminate entry way and dumpster area
Lamp Type	White incandescent, flood light
Location on Structure	Under 1 st floor balcony facing east on E side of building
Apparent Condition	Good
Mounting Height	~10'
On Conservation Lands?	No
Light Visible from beach?	Yes
Was light on?	Yes
Fixture Location Description	E side of E tower facing Crab Trap parking lot
Shielding Type	No
Light Barriers from Beach	No
Recommendation	Replace fixture with appropriate low watt amber LED

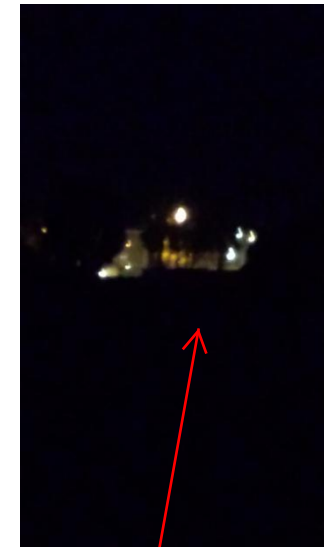


PK41	
Location	30.285409 -87.497898
Record Number	PK #41
Date	04/02/2015
Time	8:15
Team Member Name	Craig Martin
Address	16495 Perdido Key Drive (The Crab Trap)
Fixture Function Type	Sign
Lamp Type	Red Fluorescent sign
Location on Structure	N side of 292
Apparent Condition	Good
Mounting Height	~20'
On Conservation Lands?	No
Light Visible from beach?	Yes
Was light on?	Yes
Fixture Location Description	E side Building
Shielding Type	No
Light Barriers from Beach	Dunes/grass
Recommendation	



View from beach

PK42	
Location	30.285808 -87.497088
Record Number	PK #42
Date	04/02/2015
Time	8:05
Team Member Name	Craig Martin
Address	16470 Perdido Key Drive (Sundown Condos)
Fixture Function Type	Open bottom, shoebox, & cobra head mounted on poles to illuminate ROW
Lamp Type	Sodium vapor
Location on Structure	N side of 292
Apparent Condition	Functional
Mounting Height	~30'
On Conservation Lands?	No
Light Visible from beach?	Yes
Was light on?	Yes
Fixture Location Description	N side of road in parking lot
Shielding Type	No
Light Barriers from Beach	Dunes
Recommendation	Replace with Viper type 3 amber LED with full 360 degree shield and Shoebox Type-III 30W amber LED



View from beach

PK43	
Location	30.284962 -87.496581
Record Number	PK #43
Date	04/02/2015
Time	8:15
Team Member Name	Craig Martin
Address	16470 Perdido Key Drive (Sundown Condos)
Fixture Function Type	Wall mount
Lamp Type	Incandescent
Location on Structure	Stairwell
Apparent Condition	Okay
Mounting Height	~8'
On Conservation Lands?	No
Light Visible from beach?	Yes
Was light on?	Yes
Fixture Location Description	S side of condo, W stairwell
Shielding Type	No
Light Barriers from Beach	No
Recommendation	Replace with appropriate low watt amber LED fixtures



View from beach

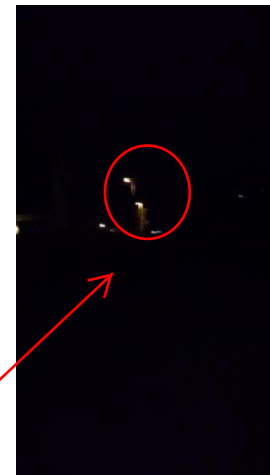
PK44	
Location	30.285020 -87.495307
Record Number	PK #44
Date	04/02/2015
Time	8:15
Team Member Name	Craig Martin
Address	16335 Perdido Key Drive (Mariner Condos)
Fixture Function Type	Wall mount to illuminate stairwell (14 lights)
Lamp Type	Incandescent
Location on Structure	W building, S side of building
Apparent Condition	Functional
Mounting Height	~8'
On Conservation Lands?	No
Light Visible from beach?	Yes
Was light on?	Yes
Fixture Location Description	W stairwell
Shielding Type	No
Light Barriers from Beach	No
Recommendation	Replace with appropriate low watt amber LED fixtures



PK45	
Location	30.285155 -87.49472
Record Number	PK #45
Date	04/02/2015
Time	8:30
Team Member Name	Craig Martin
Address	16335 Perdido Key Drive (Mariner Condos)
Fixture Function Type	Pole mount to illuminate pool deck
Lamp Type	Incandescent
Location on Structure	12 lights around pool deck
Apparent Condition	Functional
Mounting Height	~8'
On Conservation Lands?	No
Light Visible from beach?	Yes
Was light on?	Yes
Fixture Location Description	Lights on pool deck
Shielding Type	No
Light Barriers from Beach	No
Recommendation	Replace with appropriate low watt amber LED fixtures



PK46	
Location	30.285423 -87.494047
Record Number	PK #46
Date	04/02/2015
Time	9:00
Team Member Name	Craig Martin
Address	16335 Perdido Key Drive (Mariner Condos)
Fixture Function Type	Pole mount to illuminate E parking lot
Lamp Type	Sodium vapor
Location on Structure	E side of building in parking lot
Apparent Condition	Functional
Mounting Height	~30'
On Conservation Lands?	No
Light Visible from beach?	Yes
Was light on?	Yes
Fixture Location Description	In E parking lot
Shielding Type	No
Light Barriers from Beach	No
Recommendation	Replace with Viper type 3 amber LED with full 360 degree shield



View from beach

PK47	
Location	30.285530 -87.493282
Record Number	PK #47
Date	04/02/2015
Time	9:00
Team Member Name	Craig Martin
Address	16325 Perdido Key Drive
Fixture Function Type	Over 20 lights to illuminate parking & porch
Lamp Type	Incandescent
Location on Structure	Under S side of house facing the deck
Apparent Condition	Functional
Mounting Height	~12'
On Conservation Lands?	No
Light Visible from beach?	Yes
Was light on?	Yes
Fixture Location Description	Multiple lights S side of house
Shielding Type	No
Light Barriers from Beach	No
Recommendation	Replace with appropriate low watt amber LED fixtures

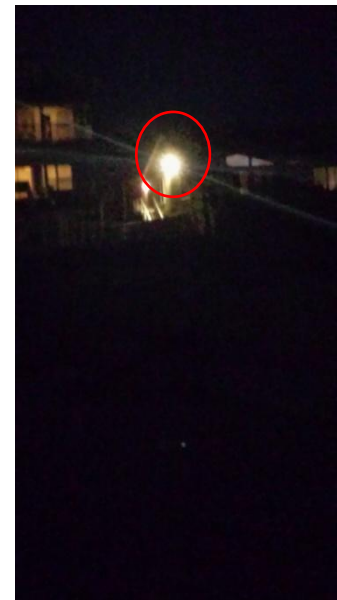


PKSP48	
Location	30.285530 -87.493282
Record Number	PK #48
Date	04/02/2015
Time	9:00
Team Member Name	Craig Martin
Address	16325 Perdido Key Drive
Fixture Function Type	Wall mount
Lamp Type	Box halogen
Location on Structure	N side of house
Apparent Condition	Functional
Mounting Height	~12'
On Conservation Lands?	No
Light Visible from beach?	No
Was light on?	No
Fixture Location Description	N side of house
Shielding Type	No
Light Barriers from Beach	No
Recommendation	Remove

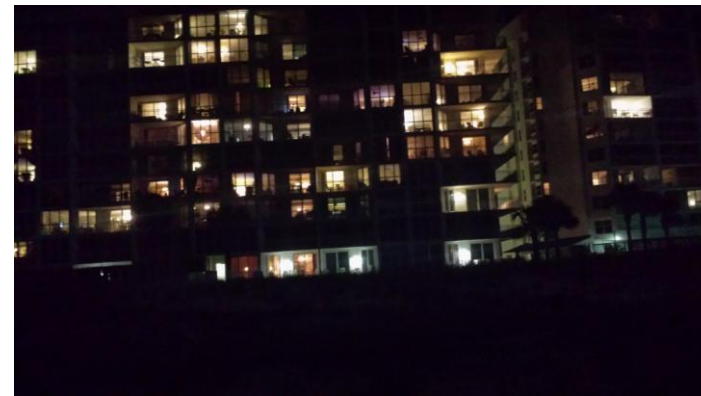
- No night picture. Light was off.



PK49	
Location	30.286001 -87.491298
Record Number	PK #49
Date	04/02/2015
Time	9:05 pm
Team Member Name	Craig Martin
Address	16311 Perdido Key Drive
Fixture Function Type	Wall mount to illuminate stairway
Lamp Type	Halogen/incandescent
Location on Structure	W side of house
Apparent Condition	Functional
Mounting Height	~30'
On Conservation Lands?	No
Light Visible from beach?	Yes
Was light on?	Yes
Fixture Location Description	Stairway lights
Shielding Type	No
Light Barriers from Beach	No
Recommendation	Replace fixture with appropriate low watt amber LED



PK51	
Location	30.286677 -87.487875
Record Number	PK #51
Date	04/02/2015
Time	9:10 pm
Team Member Name	Craig Martin
Address	16287 Perdido Key Drive (Sea Spray Condos)
Fixture Function Type	Wall mount to illuminate balconies & pool, and interior lights
Lamp Type	Incandescent
Location on Structure	W building, S balconies
Apparent Condition	Functional
Mounting Height	~8'
On Conservation Lands?	No
Light Visible from beach?	Yes
Was light on?	Yes
Fixture Location Description	S side, multiple lights & locations
Shielding Type	No
Light Barriers from Beach	No
Recommendation	Tint glass to reduce light transmission, and replace fixtures with appropriate low watt amber LED



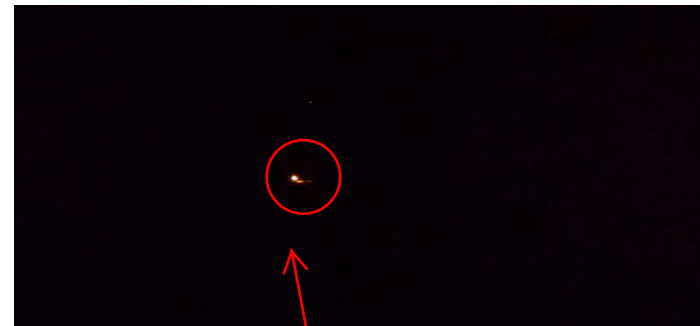
PK52	
Location	30.286825 -87.487005
Record Number	PK #52
Date	04/02/2015
Time	9:15 pm
Team Member Name	Craig Martin
Address	16287 Perdido Key Drive (Sea Spray Condos)
Fixture Function Type	Wall mount to illuminate balconies, pool, garage, and interior lights
Lamp Type	Incandescent
Location on Structure	E building, S balconies
Apparent Condition	Functional
Mounting Height	~8'-10'
On Conservation Lands?	No
Light Visible from beach?	Yes
Was light on?	Yes
Fixture Location Description	S side, multiple lights & locations
Shielding Type	No
Light Barriers from Beach	No
Recommendation	Tint glass to reduce light transmission, and replace fixtures with appropriate low watt amber LED



PK53	
Location	30.287291 -87.485417
Record Number	PK #53
Date	04/02/2015
Time	9:15 pm
Team Member Name	Craig Martin
Address	16281 Perdido Key Drive (Eden Condos)
Fixture Function Type	Balcony lights, and interior lights
Lamp Type	Incandescent
Location on Structure	Exterior
Apparent Condition	Functional
Mounting Height	~10'
On Conservation Lands?	No
Light Visible from beach?	Yes
Was light on?	Yes
Fixture Location Description	Ceiling on S side balconies
Shielding Type	No
Light Barriers from Beach	No
Recommendation	Tint glass to reduce light transmission, and replace fixtures with appropriate low watt amber LED



PK54	
Location	30.287890 -87.484049
Record Number	PK #54
Date	04/02/2015
Time	9:20 pm
Team Member Name	Craig Martin
Address	16265 Perdido Key Drive (House E of Eden Condos)
Fixture Function Type	Pole mount to illuminate driveway
Lamp Type	HPS
Location on Structure	Driveway
Apparent Condition	Functional
Mounting Height	~30'
On Conservation Lands?	No
Light Visible from beach?	Yes
Was light on?	Yes
Fixture Location Description	W side of property, Gulf front
Shielding Type	No
Light Barriers from Beach	No
Recommendation	Replace with Viper type 3 amber LED with full 360 degree shield



View from beach

PK55	
Location	30.288503 -87.482610
Record Number	PK #55
Date	04/02/2015
Time	9:30 pm
Team Member Name	Craig Martin
Address	16255 Perdido Key Drive (3 rd house E of Eden Condos)
Fixture Function Type	Pole mount to illuminate driveway
Lamp Type	HPS
Location on Structure	Along driveway & road
Apparent Condition	Good
Mounting Height	~30'
On Conservation Lands?	No
Light Visible from beach?	Yes
Was light on?	Yes
Fixture Location Description	Pole Mount
Shielding Type	No
Light Barriers from Beach	No
Recommendation	Replace with Viper type 3 amber LED with full 360 degree shield

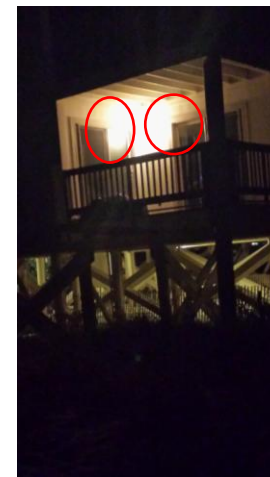


View from beach

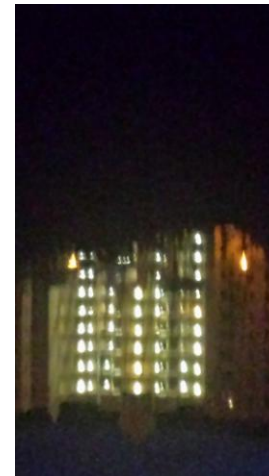
PK56	
Location	30.288881 -87.4804485
Record Number	PK #56
Date	04/02/2015
Time	9:15 pm
Team Member Name	Craig Martin
Address	16015 Perdido Key Drive
Fixture Function Type	Pole mount to illuminate parking lot
Lamp Type	Halide
Location on Structure	Pole mount
Apparent Condition	Good
Mounting Height	~30'
On Conservation Lands?	No
Light Visible from beach?	Yes
Was light on?	Yes
Fixture Location Description	In parking lot next to SR-292
Shielding Type	No
Light Barriers from Beach	No
Recommendation	Replace each fixture with Shoebox Type-III 30W amber LED



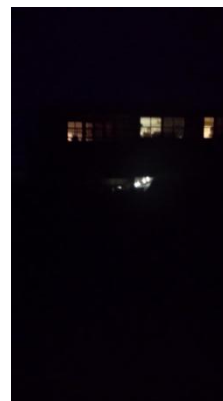
PK57	
Location	30.288578 -87.480428
Record Number	PK #57
Date	04/02/2015
Time	9:16 pm
Team Member Name	Craig Martin
Address	16015 Perdido Key Drive
Fixture Function Type	Wall mount to illuminate porch
Lamp Type	Incandescent
Location on Structure	SW side porch
Apparent Condition	Good
Mounting Height	~8'
On Conservation Lands?	No
Light Visible from beach?	Yes
Was light on?	Yes
Fixture Location Description	SW corner porch
Shielding Type	No
Light Barriers from Beach	No
Recommendation	Replace bulb with low watt amber LED



PK58	30.295015, -87.452509
Location	Florenca
Record Number	PK #58
Date	04/20/2015
Time	10:45 pm
Team Member Name	Craig Martin
Address	14700 River Road
Fixture Function Type	Front lighting to illuminate balconies
Lamp Type	Incandescent
Location on Structure	7 lights on every floor (9 floors)
Apparent Condition	Good
Mounting Height	~10'
On Conservation Lands?	No-directly across from it
Light Visible from beach?	Yes
Was light on?	Yes
Fixture Location Description	Balconies on S elevation of building
Shielding Type	None
Light Barriers from Beach	Vegetation
Recommendation	Replace fixtures with appropriate low watt amber LED



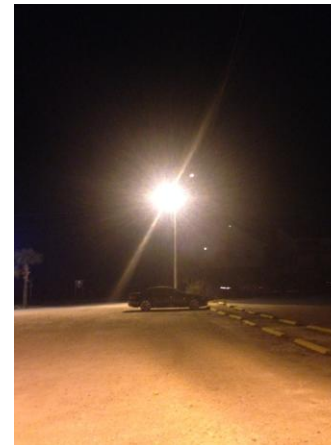
PK59	30.293564, -87.451079
Location	Spinnaker Condos
Record Number	PK #59
Date	04/20/2015
Time	10:46 pm
Team Member Name	Craig Martin
Address	14765 Perdido Key Drive
Fixture Function Type	Ceiling light to illuminate balcony & garage
Lamp Type	Incandescent
Location on Structure	5 garage lights
Apparent Condition	Good
Mounting Height	~10'
On Conservation Lands?	No
Light Visible from beach?	Yes
Was light on?	Yes
Fixture Location Description	Ceiling light to illuminate balcony & garage
Shielding Type	None
Light Barriers from Beach	Vegetation
Recommendation	Replace fixtures with appropriate low watt amber LED



PK60	30.294737, -87.44969
Location	Shrimp Basket
Record Number	PK #60
Date	04/20/2015
Time	10:54 pm
Team Member Name	Craig Martin
Address	14600 Perdido Key Drive
Fixture Function Type	Sign light
Lamp Type	Fluorescent
Location on Structure	Sign in front of building
Apparent Condition	Good
Mounting Height	25'
On Conservation Lands?	No
Light Visible from beach?	Yes
Was light on?	Yes
Fixture Location Description	In front of building
Shielding Type	None
Light Barriers from Beach	Vegetation
Recommendation	Illuminate sign with fully shield low wattage amber led fixtures and remove fluorescent bulbs



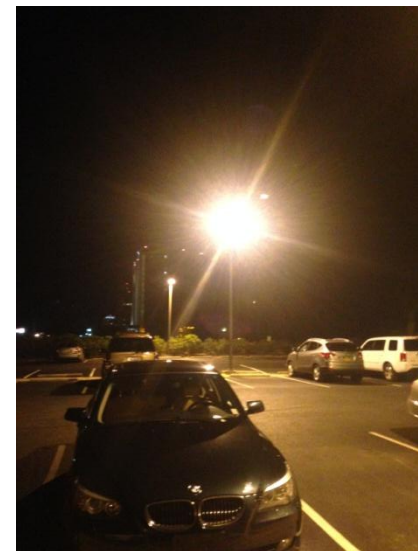
PK60a	
Location	Shrimp Basket
Record Number	PK #60a
Date	04/20/2015
Time	10:54 pm
Team Member Name	Craig Martin
Address	14600 Perdido Key Drive
Fixture Function Type	Pole mounted cobra head to illuminate parking lot
Lamp Type	Fluorescent
Location on Structure	SW corner of parking lot
Apparent Condition	Good
Mounting Height	~30'
On Conservation Lands?	No
Light Visible from beach?	Yes
Was light on?	Yes
Fixture Location Description	SW corner of parking lot
Shielding Type	None
Light Barriers from Beach	Vegetation
Recommendation	Replace with Viper type 3 amber LED with full 360 degree shield



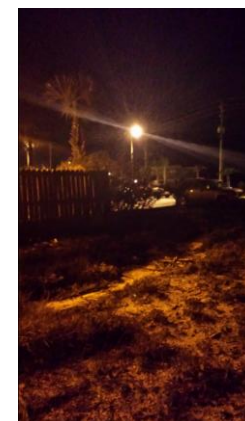
PK61	30.293887, -87.449176
Location	Condos SE of Shrimp Basket
Record Number	PK #61
Date	04/20/2015
Time	10:50 pm
Team Member Name	Craig Martin
Address	14709 Perdido Key Drive
Fixture Function Type	Wall/ceiling light
Lamp Type	Incandescent
Location on Structure	Balcony/Garage lights
Apparent Condition	Good
Mounting Height	8' on balcony/10' garage
On Conservation Lands?	No
Light Visible from beach?	Yes
Was light on?	Yes
Fixture Location Description	Ceiling wall mount
Shielding Type	None
Light Barriers from Beach	No
Recommendation	Replace fixtures with appropriate low watt amber LED



PK62	30.294189, -87.447823
Location	Ocean Breeze West
Record Number	PK #62
Date	04/20/2015
Time	10:54 pm
Team Member Name	Craig Martin
Address	14623 Perdido Key Drive
Fixture Function Type	Parking lot lights
Lamp Type	HPS, shoebox
Location on Structure	Parking lot
Apparent Condition	Good
Mounting Height	25' parking lot
On Conservation Lands?	No
Light Visible from beach?	Yes
Was light on?	Yes
Fixture Location Description	Parking lot
Shielding Type	None
Light Barriers from Beach	None
Recommendation	Replace each fixture with Shoebox Type-III 30W amber LED



PK63	30.294560, -87.445497
Location	Windemere Condominiums
Record Number	PK #63
Date	04/20/2015
Time	11:00 pm
Team Member Name	Craig Martin
Address	14511 Perdido Key Drive
Fixture Function Type	Pole Mount to illuminate parking lot
Lamp Type	Halide
Location on Structure	E & W sides of parking lot
Apparent Condition	Good
Mounting Height	35'
On Conservation Lands?	No
Light Visible from beach?	Yes
Was light on?	Yes
Fixture Location Description	Parking deck
Shielding Type	None
Light Barriers from Beach	Vegetation
Recommendation	Replace each fixture with Shoebox Type-III 30W amber LED



PK64	30.295095, -87.445436
Location	Lillian's Pizza
Record Number	PK #64
Date	04/20/2015
Time	11:05 pm
Team Member Name	Craig Martin
Address	14514 Perdido Key Drive
Fixture Function Type	Pole and wall mounted signs to illuminate parking lot
Lamp Type	Fluorescent
Location on Structure	2 signs- 1 on front of building 1 next to road; 6 pole mount halides parking lot
Apparent Condition	Good
Mounting Height	20'+, parking lot lights 30'
On Conservation Lands?	No
Light Visible from beach?	Yes
Was light on?	Yes
Fixture Location Description	Two signs: one on front of building, one next to road. Pole Mounts in parking lot next to building and NE of front sign
Shielding Type	None
Light Barriers from Beach	No
Recommendation	Illuminate sign with fully shield low wattage amber led fixtures and remove fluorescent bulbs, and replace each fixture with Shoebox Type III 30W amber LED



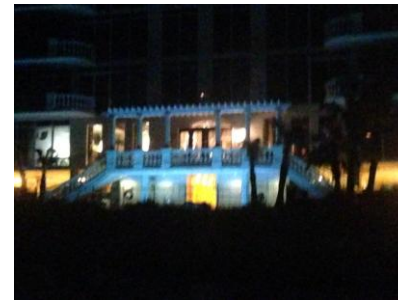
PK65	30.294693, -87.445070
Location	Windemere Condominium
Record Number	PK #65
Date	04/20/2015
Time	11:00 pm
Team Member Name	Craig Martin
Address	14511 Perdido Key Drive
Fixture Function Type	Ceiling mount to illuminate parking lot deck
Lamp Type	Yellow incandescent or fluorescent
Location on Structure	Parking lot deck ceiling mount lights
Apparent Condition	Good
Mounting Height	10+
On Conservation Lands?	No
Light Visible from beach?	Yes
Was light on?	Yes
Fixture Location Description	Parking decks by garage
Shielding Type	None
Light Barriers from Beach	No
Recommendation	Replace with appropriate low watt amber LED fixtures



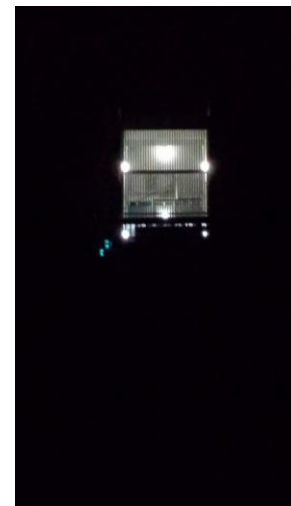
PK66	30.294438, -87.444240
Location	Palms of Perdido Condominiums
Record Number	PK #66
Date	04/20/2015
Time	11:05 pm
Team Member Name	Craig Martin
Address	14455 Perdido Key Drive
Fixture Function Type	Ceiling mount to illuminate covered parking lot
Lamp Type	LPS
Location on Structure	Garage
Apparent Condition	Good
Mounting Height	10'
On Conservation Lands?	No
Light Visible from beach?	Yes
Was light on?	Yes
Fixture Location Description	Garage
Shielding Type	No
Light Barriers from Beach	No
Recommendation	Replace fixtures with appropriate low watt amber LED



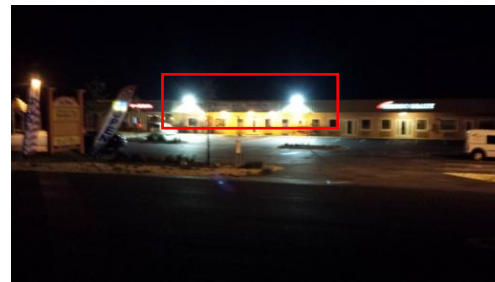
PK67	30.294449, -87.44449
Location	Palms of Perdido Condominiums
Record Number	PK #67
Date	04/20/2015
Time	11:07 pm
Team Member Name	Craig Martin
Address	14455 Perdido Key Drive
Fixture Function Type	Wall mount to illuminate entry & pool
Lamp Type	Incandescent
Location on Structure	Entry lights on S side of building
Apparent Condition	Good
Mounting Height	8'
On Conservation Lands?	No
Light Visible from beach?	Yes
Was light on?	Yes
Fixture Location Description	Wall mount on S side of building by entrance
Shielding Type	No
Light Barriers from Beach	No
Recommendation	Replace fixtures with appropriate low watt amber LED (fully shielded)



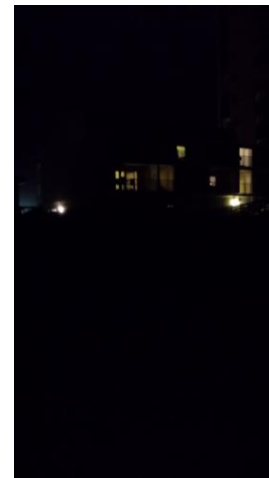
PK68	30.294873, -87.441399
Location	Moorings of Perdido Key Condominiums
Record Number	PK #68
Date	04/20/2015
Time	11:07 pm
Team Member Name	Craig Martin
Address	14405 Perdido Key Drive
Fixture Function Type	Ceiling and wall mount to illuminate stairs
Lamp Type	Incandescent
Location on Structure	Stairwell on S side, 2 nd & 3 rd floor
Apparent Condition	Good
Mounting Height	10'
On Conservation Lands?	No
Light Visible from beach?	Yes
Was light on?	Yes
Fixture Location Description	Stairwell on S side of building, lights on E & W side of stairwell
Shielding Type	No
Light Barriers from Beach	No
Recommendation	Replace fixtures with appropriate low watt amber LED (fully shielded)



PK69	30.295884 -87.441271
Location	Bella Luna Strip Mall
Record Number	PK #69
Date	04/20/2015
Time	11:09 pm
Team Member Name	Craig Martin
Address	14250 Perdido Key Drive
Fixture Function Type	Multiple lights to illuminate parking lot & building
Lamp Type	Sodium vapor shielded lights on either side of Perdido Key Trading sign. Florescent Incandescent
Location on Structure	Wall and pole mount
Apparent Condition	Good
Mounting Height	10'-30'
On Conservation Lands?	No
Light Visible from beach?	Yes
Was light on?	Yes
Fixture Location Description	S elevation of building and perimeter of parking lot
Shielding Type	No
Light Barriers from Beach	No
Recommendation	Illuminate sign with fully shield low wattage amber led fixtures and remove fluorescent bulbs, replace fixtures with Shoebox Type III 30W amber LED or Viper Type 3amber LED with full 360 degree shield



PKSP70	30.294935 -87.440975
Location	La Riva Condominiums (Western Tower)
Record Number	PK #70
Date	04/20/2015
Time	11:10 pm
Team Member Name	Craig Martin
Address	14237 Perdido Key Drive
Fixture Function Type	Wall & pole mounts to illuminate pool & E access area
Lamp Type	Incandescent
Location on Structure	SW side of eastern access
Apparent Condition	Good
Mounting Height	8'
On Conservation Lands?	No
Light Visible from beach?	Yes
Was light on?	Yes
Fixture Location Description	SW side of eastern access
Shielding Type	No
Light Barriers from Beach	No
Recommendation	Replace each pole mount fixture with Shoebox Type-III 30W amber LED, and wall mounts with appropriate amber LED



PK71	30.295033 -87.440236
Location	La Riva Condominiums East & West Tower
Record Number	PK #71
Date	04/20/2015
Time	11:10 pm
Team Member Name	Craig Martin
Address	14237 Perdido Key Drive
Fixture Function Type	Wall, ceiling & pole mount
Lamp Type	Multiple lights-incandescent, HPS
Location on Structure	S of buildings around pool, spa, & gym
Apparent Condition	Good
Mounting Height	10'-20'
On Conservation Lands?	No
Light Visible from beach?	Yes
Was light on?	Yes
Fixture Location Description	Along S side of building
Shielding Type	No
Light Barriers from Beach	No
Recommendation	Replace each pole mount fixture with Shoebox Type-III 30W amber LED, and wall mounts with appropriate amber LED



PK72	30.294998 -87.440508
Location	La Riva Condominiums Central Tower
Record Number	PK #72
Date	04/20/2015
Time	11:10 pm
Team Member Name	Craig Martin
Address	14239 Perdido Key Drive
Fixture Function Type	Interior lights
Lamp Type	Chandelier- interior
Location on Structure	Interior ceiling
Apparent Condition	Good
Mounting Height	10'
On Conservation Lands?	No
Light Visible from beach?	Yes
Was light on?	Yes
Fixture Location Description	Interior ceiling
Shielding Type	No
Light Barriers from Beach	No
Recommendation	Tint glass to reduce light transmission



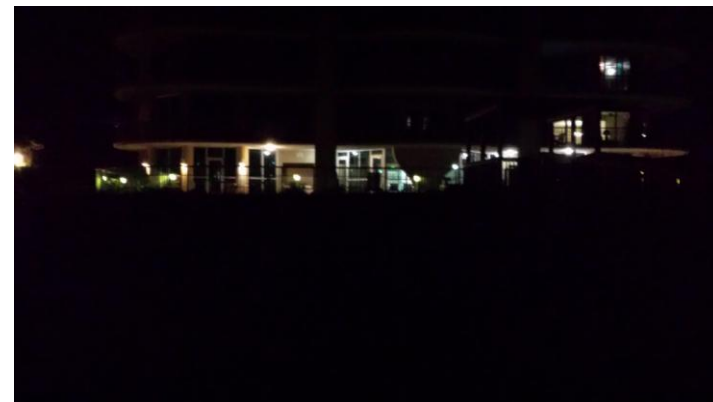
PK73	30.295085 -87.439762
Location	La Riva Condominiums East Tower
Record Number	PK #73
Date	04/20/2015
Time	11:10 pm
Team Member Name	Craig Martin
Address	14237 Perdido Key Drive
Fixture Function Type	Ceiling, wall & pole mounts to illuminate balconies & pool
Lamp Type	Various lights
Location on Structure	Multiple lights on S side of structure
Apparent Condition	Good
Mounting Height	10'-30'
On Conservation Lands?	No
Light Visible from beach?	Yes
Was light on?	Yes
Fixture Location Description	Along S side of building by spa/pool/gym
Shielding Type	No
Light Barriers from Beach	No
Recommendation	Replace each pole mount fixture with Shoebox Type-III 30W amber LED, and wall mounts with appropriate amber LED



PK74	30.295940 -87.435469
Location	Mirabella Condominiums
Record Number	PK #74
Date	04/21/2015
Time	9:15 pm
Team Member Name	Craig Martin
Address	13937 Perdido Key Drive
Fixture Function Type	Numerous pole mount to illuminate parking lot
Lamp Type	Sodium halide pole lights
Location on Structure	In W surface parking lot
Apparent Condition	Good
Mounting Height	15'
On Conservation Lands?	No
Light Visible from beach?	Yes
Was light on?	Yes
Fixture Location Description	W parking lot
Shielding Type	No
Light Barriers from Beach	No
Recommendation	Replace



PK75	30.295740 -87.435071
Location	Mirabella Condominiums
Record Number	PK #75
Date	04/21/2015
Time	9:46 pm
Team Member Name	Craig Martin
Address	13937 Perdido Key Drive
Fixture Function Type	Ceiling mount to illuminate pool
Lamp Type	Incandescent
Location on Structure	Ceiling of pool deck
Apparent Condition	Good
Mounting Height	15'
On Conservation Lands?	No
Light Visible from beach?	Yes
Was light on?	Yes
Fixture Location Description	Pool ceiling
Shielding Type	No
Light Barriers from Beach	No
Recommendation	Replace fixtures with appropriate low watt amber LED



PK76	30.295701, -87.434720
Location	Mirabella Condominiums
Record Number	PK #76
Date	04/21/2015
Time	9:46 pm
Team Member Name	Craig Martin
Address	13937 Perdido Key Drive
Fixture Function Type	Pole Mount to illuminate gazebo, pool
Lamp Type	HPS
Location on Structure	East side of building in parking lot next to gazebo
Apparent Condition	Good
Mounting Height	4'-20'
On Conservation Lands?	No
Light Visible from beach?	Yes
Was light on?	Yes
Fixture Location Description	East side of building in parking lot next to gazebo
Shielding Type	No
Light Barriers from Beach	No
Recommendation	Replace each pole mount fixture with Shoebox Type-III 30W amber LED



PK77	30.296814 -87.433873
Location	Décor Furniture & Accessories
Record Number	PK #77
Date	04/21/2015
Time	9:50 pm
Team Member Name	Craig Martin
Address	13886 Perdido Key Drive
Fixture Function Type	Front sign
Lamp Type	Fluorescent
Location on Structure	Sign in front of building
Apparent Condition	Good
Mounting Height	30'
On Conservation Lands?	No
Light Visible from beach?	Yes
Was light on?	Yes
Fixture Location Description	In front of building
Shielding Type	No
Light Barriers from Beach	No
Recommendation	Illuminate sign with fully shield low wattage amber led fixtures and remove fluorescent bulbs



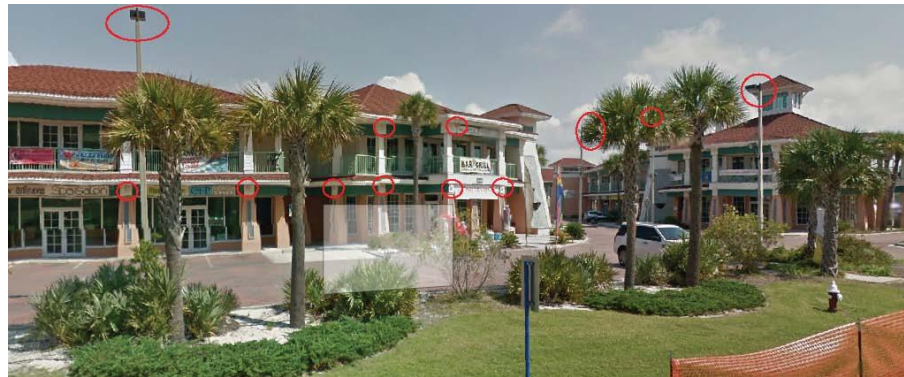
PK78	30.295968 -87.432917
Location	Ocean Breeze West Condos
Record Number	PK #78
Date	04/21/2015
Time	9:40 pm
Team Member Name	Craig Martin
Address	14623 Perdido Key Drive
Fixture Function Type	Pole/wall mounts to illuminate pool, parking, & balcony
Lamp Type	Fluorescent, incandescent, and halide
Location on Structure	Parking lot and balcony
Apparent Condition	Good
Mounting Height	30'-10'
On Conservation Lands?	No
Light Visible from beach?	Yes
Was light on?	Yes
Fixture Location Description	Parking lot and balcony
Shielding Type	No
Light Barriers from Beach	No
Recommendation	Replace each pole mount fixture with Shoebox Type-III 30W amber LED, and wall mounts with appropriate amber LED



PK79	30.296040 -87.432397
Location	Perdido Skye Condos
Record Number	PK #79
Date	04/21/2015
Time	9:40 pm
Team Member Name	Craig Martin
Address	14623 Perdido Key Drive
Fixture Function Type	Wall mount to illuminate pool, parking, & balcony
Lamp Type	Fluorescent
Location on Structure	Pool deck S of building
Apparent Condition	Good
Mounting Height	8'
On Conservation Lands?	No
Light Visible from beach?	Yes
Was light on?	Yes
Fixture Location Description	Pool deck S of building
Shielding Type	No
Light Barriers from Beach	No
Recommendation	Replace fixtures with appropriate low watt amber LED fully shielded



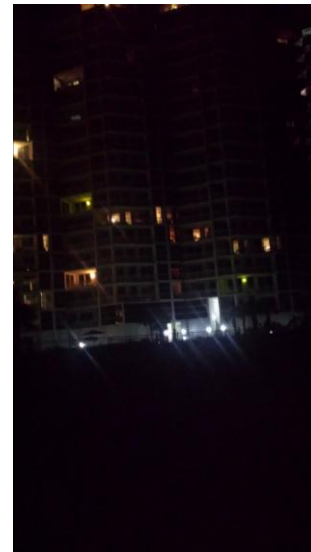
PK80	30.297336 -87.431989
Location	Villagio Condominiums
Record Number	PK #80
Date	04/21/2015
Time	9:50 pm
Team Member Name	Craig Martin
Address	13700 Perdido Key Drive
Fixture Function Type	Wall and pole mount
Lamp Type	Florescent and sodium vapor
Location on Structure	Parking lot and exterior of buildings
Apparent Condition	Good
Mounting Height	8'-30'
On Conservation Lands?	No
Light Visible from beach?	Yes
Was light on?	Yes
Fixture Location Description	Parking lot and exterior of buildings
Shielding Type	No
Light Barriers from Beach	No
Recommendation	Replace each pole mount fixture with Shoebox Type-III 30W amber LED, and wall mounts with appropriate amber LED



PK81	30.296186 -87.431673
Location	Perdido Sun Condominiums
Record Number	PK #81
Date	04/21/2015
Time	9:55 pm
Team Member Name	Craig Martin
Address	13753 Perdido Key Drive
Fixture Function Type	Wall Mount & interior lighting to illuminate pool, balconies
Lamp Type	Fluorescent
Location on Structure	Indoor Pool lights
Apparent Condition	Good
Mounting Height	10'
On Conservation Lands?	No
Light Visible from beach?	Yes
Was light on?	Yes
Fixture Location Description	
Shielding Type	No
Light Barriers from Beach	No
Recommendation	Tint glass to reduce light transmission



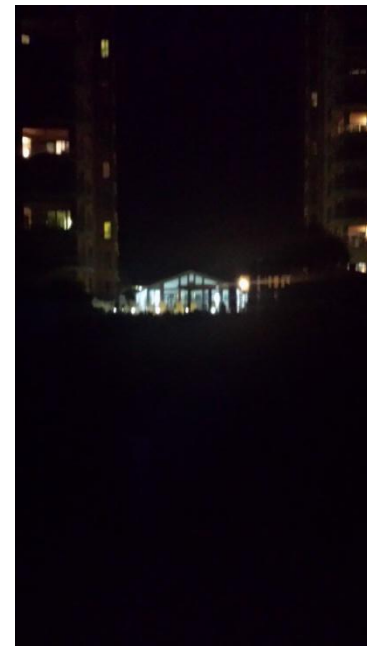
PK82	30.296420 -87.430868
Location	Palacio at Perdido Condominium
Record Number	PK #82
Date	04/21/2015
Time	10:00 pm
Team Member Name	Craig Martin
Address	13661 Perdido Key Drive
Fixture Function Type	Wall Mount to illuminate pool
Lamp Type	Fluorescent
Location on Structure	Pool lights on S side of buildings and on balconies
Apparent Condition	Good
Mounting Height	10'
On Conservation Lands?	No
Light Visible from beach?	Yes
Was light on?	Yes
Fixture Location Description	Pool lights on S side of buildings and on balconies
Shielding Type	No
Light Barriers from Beach	No
Recommendation	Replace with low watt amber LED



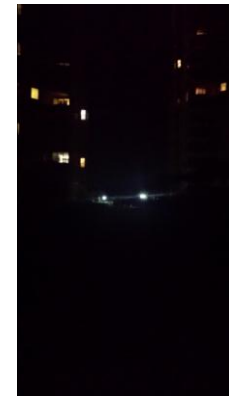
PK83	30.296776 -87.430736
Location	Palacio at Perdido Condominium
Record Number	PK #83
Date	04/21/2015
Time	10:00 pm
Team Member Name	Craig Martin
Address	13661 Perdido Key Drive
Fixture Function Type	Pole Mount
Lamp Type	Metal Halide
Location on Structure	Parking lot on E side of building
Apparent Condition	Good
Mounting Height	25'
On Conservation Lands?	No
Light Visible from beach?	Yes
Was light on?	Yes
Fixture Location Description	Parking lot on E side of building
Shielding Type	No
Light Barriers from Beach	No
Recommendation	Replace with type 3 viper amber LED



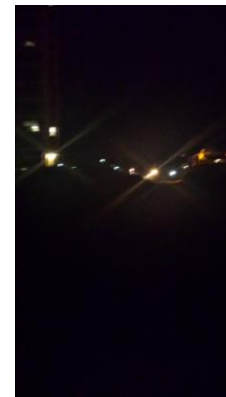
PK84	30.296695 -87.428503
Location	Beach Colony Condo
Record Number	PK #84
Date	04/21/2015
Time	10:02 pm
Team Member Name	Craig Martin
Address	13599 Perdido Key Drive
Fixture Function Type	Interior lights
Lamp Type	Fluorescent
Location on Structure	Indoor pool lights on west and center building
Apparent Condition	Good
Mounting Height	12'
On Conservation Lands?	No
Light Visible from beach?	Yes
Was light on?	Yes
Fixture Location Description	Interior lights
Shielding Type	No
Light Barriers from Beach	No
Recommendation	Tint glass to reduce light transmission



PK85	30.297306 -87.427973
Location	Beach Colony Condo
Record Number	PK #85
Date	04/21/2015
Time	10:02 pm
Team Member Name	Craig Martin
Address	13599 Perdido Key Drive
Fixture Function Type	Parking lot lights
Lamp Type	HPS
Location on Structure	Parking lot between east and center buildings
Apparent Condition	Good
Mounting Height	25'
On Conservation Lands?	No
Light Visible from beach?	Yes
Was light on?	Yes
Fixture Location Description	Parking lot between E and center buildings
Shielding Type	No
Light Barriers from Beach	No
Recommendation	Replace with type 3 viper amber LED



PK86	30.297367 -87.427346
Location	Beach Colony Condo East Building
Record Number	PK #86
Date	04/21/2015
Time	10:02 pm
Team Member Name	Craig Martin
Address	13599 Perdido Key Drive
Fixture Function Type	Wall mount
Lamp Type	Fluorescent
Location on Structure	E pool entry deck
Apparent Condition	Good
Mounting Height	12'
On Conservation Lands?	No
Light Visible from beach?	Yes
Was light on?	Yes
Fixture Location Description	E entry pool deck
Shielding Type	No
Light Barriers from Beach	No
Recommendation	Replace bulb with low wattage amber LED



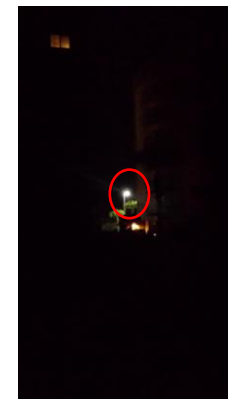
PK87	30.297448 -87.427255
Location	Sandy Key Public Access
Record Number	PK #87
Date	04/21/2015
Time	10:05 pm
Team Member Name	Craig Martin
Address	West of 13555 Sandy Key Drive
Fixture Function Type	Open bottom; Pole mount to illuminate beach access parking
Lamp Type	Metal Halide
Location on Structure	Pole mounted lights on either side of public access to beach on Sandy Key Drive
Apparent Condition	Good
Mounting Height	30'
On Conservation Lands?	No
Light Visible from beach?	Yes
Was light on?	Yes
Fixture Location Description	Public Access
Shielding Type	No
Light Barriers from Beach	No
Recommendation	Replace with type 3 viper amber LED



PK88	30.297002 -87.426850
Location	La Playa Condominiums
Record Number	PK #88
Date	04/21/2015
Time	10:07 pm
Team Member Name	Craig Martin
Address	13555 Sandy Key Drive
Fixture Function Type	Interior lights
Lamp Type	Fluorescent
Location on Structure	Indoor pool
Apparent Condition	Good
Mounting Height	12'
On Conservation Lands?	No
Light Visible from beach?	Yes
Was light on?	Yes
Fixture Location Description	Interior
Shielding Type	No
Light Barriers from Beach	No
Recommendation	Tint glass to reduce light transmission



PK89	30.2907059 -87.426280
Location	Sandy Key Condominiums
Record Number	PK #89
Date	04/21/2015
Time	10:10 pm
Team Member Name	Craig Martin
Address	West of 13575 Sandy Key Drive
Fixture Function Type	Multiple pole mounted and interior lights
Lamp Type	Metal halide and fluorescent
Location on Structure	In parking lot and surrounding interior pool
Apparent Condition	Good
Mounting Height	30'-12'
On Conservation Lands?	No
Light Visible from beach?	Yes
Was light on?	Yes
Fixture Location Description	In parking lot and surrounding interior pool
Shielding Type	No
Light Barriers from Beach	No
Recommendation	Tine glass to reduce light transmission, and replace pole mounts with amber LED



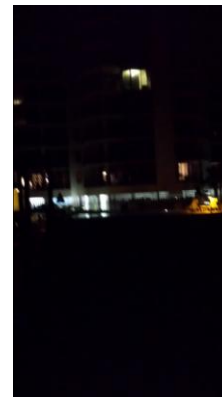
PK91	30.297362-87.425512
Location	Sandy Key Condominiums
Record Number	PK #91
Date	04/21/2015
Time	10:12 pm
Team Member Name	Craig Martin
Address	13575 Sandy Key Drive
Fixture Function Type	Ceiling mount to illuminate balcony
Lamp Type	Incandescent
Location on Structure	Balcony on E side of west building
Apparent Condition	Good
Mounting Height	30'
On Conservation Lands?	No
Light Visible from beach?	Yes
Was light on?	Yes
Fixture Location Description	Balcony on E side of west building
Shielding Type	No
Light Barriers from Beach	No
Recommendation	Replace bulb with low watt amber LED



PK92	30.297228 -87.425050
Location	Sandy Key Condominiums
Record Number	PK #92
Date	04/21/2015
Time	10:12 pm
Team Member Name	Craig Martin
Address	13575 Sandy Key Drive
Fixture Function Type	Interior lights
Lamp Type	Fluorescent
Location on Structure	Center tower pool access
Apparent Condition	Good
Mounting Height	~12'
On Conservation Lands?	No
Light Visible from beach?	Yes
Was light on?	Yes
Fixture Location Description	Center tower pool access
Shielding Type	No
Light Barriers from Beach	No
Recommendation	Tint glass to reduce light transmission



PK95	30.297515 -87.423851
Location	Sandy Key Condominiums
Record Number	PK #95
Date	04/21/2015
Time	10:17 pm
Team Member Name	Craig Martin
Address	13575 Sandy Key Drive
Fixture Function Type	Pole Mounted to illuminate parking lot
Lamp Type	Metal Halide
Location on Structure	W and E corner of eastern parking lot
Apparent Condition	Good
Mounting Height	~30'
On Conservation Lands?	No
Light Visible from beach?	Yes
Was light on?	Yes
Fixture Location Description	W and E corner of eastern parking lot
Shielding Type	No
Light Barriers from Beach	No
Recommendation	Replace with appropriate amber LED fixture



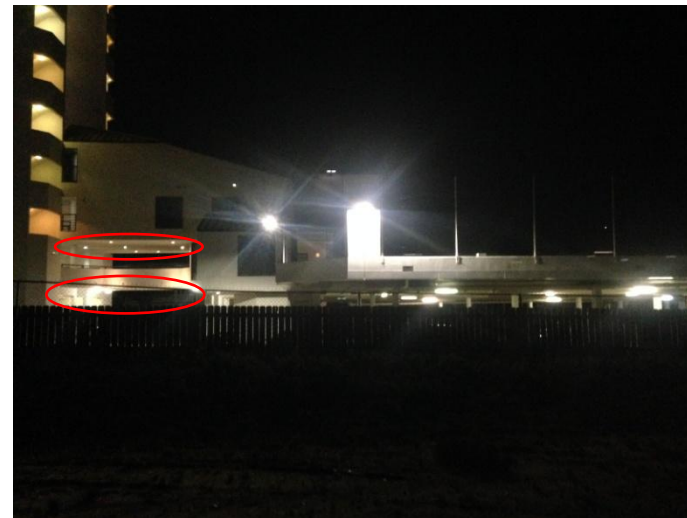
PK98	30.298218, -87.420857
Location	Land's End Condominiums
Record Number	PK #98
Date	04/21/2015
Time	10:25 pm
Team Member Name	Craig Martin
Address	13335 Johnson Beach Road
Fixture Function Type	Pole mounted to illuminate parking lot, wall mount to illuminate parking garage
Lamp Type	HPS< wall mount LED
Location on Structure	Parking lot, parking garage exterior lights
Apparent Condition	Good
Mounting Height	10'-20'
On Conservation Lands?	No
Light Visible from beach?	Yes
Was light on?	Yes
Fixture Location Description	East side surface parking lot, and exterior wall mounts on parking garage (NW, NE, SE, SW corners of 2 nd story parking deck)
Shielding Type	No
Light Barriers from Beach	No
Recommendation	Replace with appropriate amber LED fixture



PK99	30.298218, -87.420857
Location	Land's End Condominiums
Record Number	PK #99
Date	04/21/2015
Time	10:25 pm
Team Member Name	Craig Martin
Address	13335 Johnson Beach Road
Fixture Function Type	Ceiling mounted to illuminate parking garages
Lamp Type	Fluorescent & Box LED
Location on Structure	Parking garage
Apparent Condition	Good
Mounting Height	15'
On Conservation Lands?	No
Light Visible from beach?	Yes
Was light on?	Yes
Fixture Location Description	On ceiling of parking garage
Shielding Type	No
Light Barriers from Beach	No
Recommendation	Replace with appropriate amber LED fixture



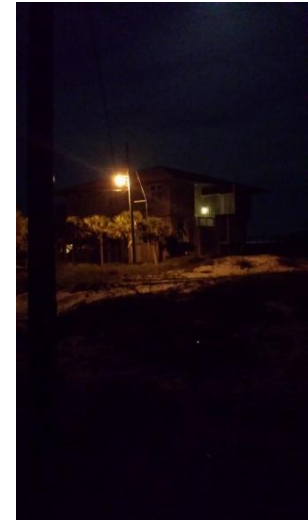
PK100	30.298218, -87.420857
Location	Land's End Condominiums
Record Number	PK #100
Date	04/21/2015
Time	10:25 pm
Team Member Name	Craig Martin
Address	13335 Johnson Beach Road
Fixture Function Type	Breeze way
Lamp Type	CFC Ceiling mount
Location on Structure	Parking garage
Apparent Condition	Good
Mounting Height	15'
On Conservation Lands?	No
Light Visible from beach?	Yes
Was light on?	Yes
Fixture Location Description	On ceiling of parking garage
Shielding Type	No
Light Barriers from Beach	No
Recommendation	Replace with appropriate amber LED fixture



PK101	30.298218, -87.420857
Location	Land's End Condominiums
Record Number	PK #101
Date	04/21/2015
Time	10:25 pm
Team Member Name	Craig Martin
Address	13335 Johnson Beach Road
Fixture Function Type	2- pole mounts to illuminate entrance on N side of building, 1-wall mount LED
Lamp Type	Cobra head pole mounted LED, LED wall mount
Location on Structure	Main entrance on front side of building
Apparent Condition	Good
Mounting Height	15'-30'
On Conservation Lands?	No
Light Visible from beach?	Yes
Was light on?	Yes
Fixture Location Description	North side entrance
Shielding Type	No
Light Barriers from Beach	No
Recommendation	Replace with appropriate amber LED fixture



PK102	
Location	30.288073 -87.483137
Record Number	PK #102
Date	05/03/2015
Time	9:00
Team Member Name	Keith Johnson
Address	16257 Perdido Key Drive (Brown cedar house)
Fixture Function Type	Pole mount to illuminate driveway and side yard
Lamp Type	HPS open bottom
Location on Structure	Near NW corner of residence
Apparent Condition	Good
Mounting Height	~20'
On Conservation Lands?	No
Light Visible from beach?	Yes
Was light on?	Yes
Fixture Location Description	NW corner of residence
Shielding Type	No
Light Barriers from Beach	No
Recommendation	Replace with Viper type 3 amber LED with full 360 degree shield



PK103	
Location	30.288345 -87.481839
Record Number	PK #103
Date	05/03/2015
Time	9:05
Team Member Name	Keith Johnson
Address	16101 Perdido Key Drive (Our Beach House)
Fixture Function Type	Pole mount to illuminate driveway and side yard
Lamp Type	HPS open bottom
Location on Structure	Near NW corner of residence
Apparent Condition	Good
Mounting Height	~20'
On Conservation Lands?	No
Light Visible from beach?	Yes
Was light on?	No
Fixture Location Description	NW corner of residence on gravel parking area
Shielding Type	No
Light Barriers from Beach	No
Recommendation	Replace with Viper type 3 amber LED with full 360 degree shield

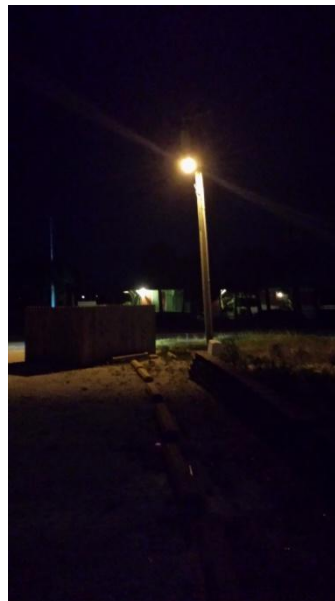
- Light was off at night. No night picture.



PK104	
Location	30.294217 -87.451740
Record Number	PK #104
Date	05/03/2015
Time	9:15
Team Member Name	Keith Johnson
Address	Intersection of River Road and Perdido Key Drive
Fixture Function Type	Pole mount street light
Lamp Type	Cobrahead HPS
Location on Structure	NW corner of River Road & Perdido Key Drive
Apparent Condition	Good
Mounting Height	~25'
On Conservation Lands?	No
Light Visible from beach?	Yes
Was light on?	Yes
Fixture Location Description	NW corner River Road and Perdido Key Drive
Shielding Type	Full 360 degree metal shield
Light Barriers from Beach	No
Recommendation	Replace with Viper type 3 amber LED with full 360 degree shield



PK105	Spinnaker Condos
Location	30.294096 -87.450862
Record Number	PK #105
Date	05/03/2015
Time	9:20
Team Member Name	Keith Johnson
Address	14765 Perdido Key Drive
Fixture Function Type	Pole mount to illuminate street
Lamp Type	HPS open bottom
Location on Structure	NE corner of site on NE side of Fenced Dumpster pad
Apparent Condition	Good
Mounting Height	~25'
On Conservation Lands?	No
Light Visible from beach?	Yes
Was light on?	Yes
Fixture Location Description	NE corner of site on NE side of Fenced Dumpster pad
Shielding Type	180 degree metal shield
Light Barriers from Beach	Buildings
Recommendation	Replace with Viper type 3 amber LED with full 360 degree shield



PK106	
Location	30.294379 -87.448737
Record Number	PK #106
Date	05/03/2015
Time	9:25
Team Member Name	Keith Johnson
Address	Between 14623 & 14709 Perdido Key Drive
Fixture Function Type	Pole mount to illuminate street
Lamp Type	HPS open bottom
Location on Structure	S side of ROW
Apparent Condition	Good
Mounting Height	~25'
On Conservation Lands?	No
Light Visible from beach?	Yes
Was light on?	Yes
Fixture Location Description	S side of ROW just N of fire hydrant
Shielding Type	180 degree metal shield
Light Barriers from Beach	No
Recommendation	Replace with Viper type 3 amber LED with full 360 degree shield

- Light was off during night survey. No night picture.



PK107	
Location	30.294623 -87.448774
Record Number	PK #107
Date	05/03/2015
Time	9:30
Team Member Name	Keith Johnson
Address	Between 14580 & 14590 Perdido Key Drive
Fixture Function Type	Pole mount to illuminate street
Lamp Type	HPS open bottom
Location on Structure	N side of ROW
Apparent Condition	Good
Mounting Height	~25'
On Conservation Lands?	No
Light Visible from beach?	Yes
Was light on?	Yes
Fixture Location Description	N side of ROW just W of drive connection to condo
Shielding Type	180 degree metal shield
Light Barriers from Beach	No
Recommendation	Replace with Viper type 3 amber LED with full 360 degree shield



PK108	
Location	30.294924 -87.446468
Record Number	PK #108
Date	05/03/2015
Time	9:30
Team Member Name	Keith Johnson
Address	14530 Perdido Key Drive
Fixture Function Type	Pole mount to illuminate street
Lamp Type	Shoebox HPS pole mount
Location on Structure	SW corner of site
Apparent Condition	Good
Mounting Height	~25'
On Conservation Lands?	No
Light Visible from beach?	Yes
Was light on?	Yes
Fixture Location Description	SW corner of site
Shielding Type	No
Light Barriers from Beach	No
Recommendation	Replace with Shoe box III 30 W amber LED



Exhibit C

Aerial Base Map



ENVIRONMENTAL CONSULTANTS

3308 GULF BEACH HWY
PENSACOLA, FLORIDA 32507
TEL: 850.453.4700
KEITH@WETLANDSCIENCES.COM

PROJECT NAME: PK Lighting Survey

Map Index

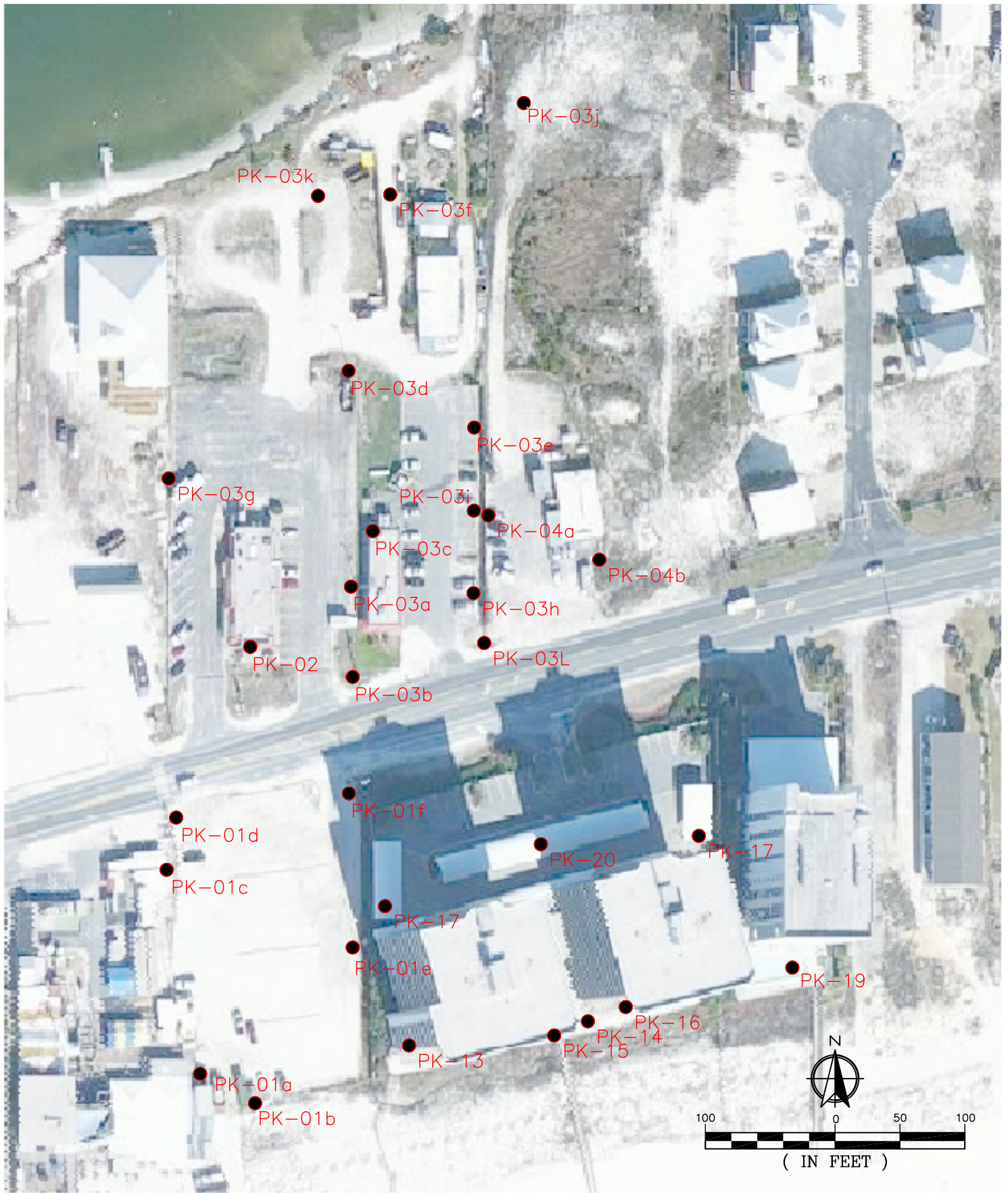
PROJECT NO.: 2014-466

DRAWN BY: KDJ

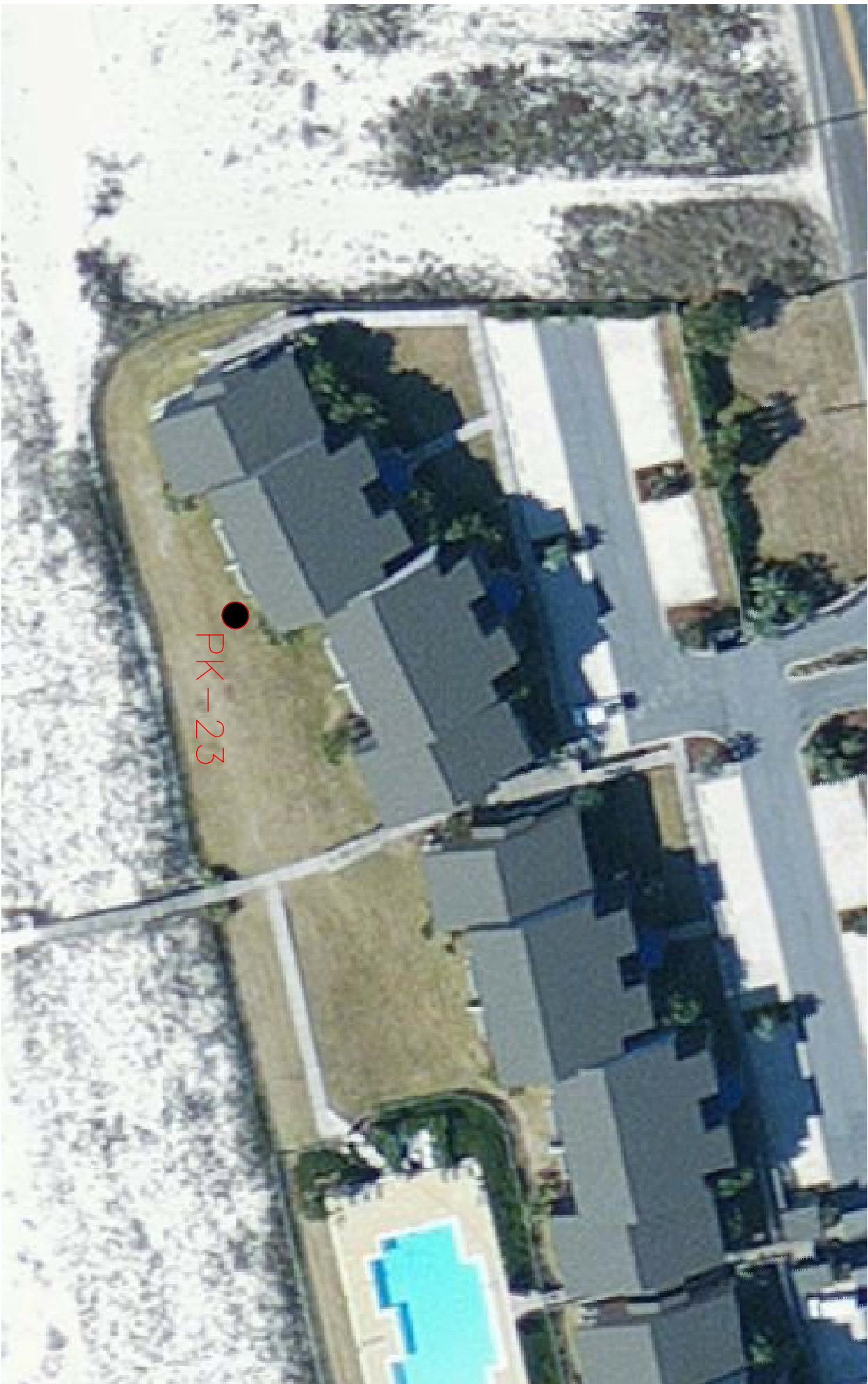
DATE: 05/05/15

SHEET: 1 OF 31









ENVIRONMENTAL CONSULTANTS

3308 GULF BEACH HWY
PENSACOLA, FLORIDA 32507
TEL: 850.453.4700
KEITH@WETLANDSCIENCES.COM

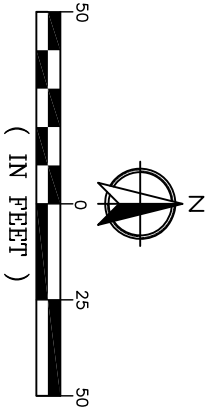
PROJECT NAME: PK Lighting Survey

Index #3

PROJECT NO.: 2014-466

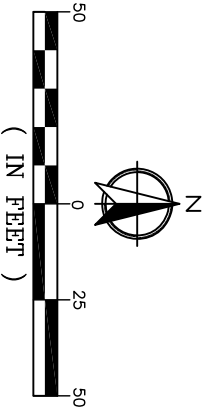
DRAWN BY: KDJ DATE: 05/04/15

SHEET: 4 OF 31





PROJECT NAME: PK Lighting Survey	
Insert #4	
PROJECT NO.:	2014-466
DRAWN BY: KDJ	DATE: 05/04/15
SHEET: 5 OF 32	





ENVIRONMENTAL CONSULTANTS

3308 GULF BEACH HWY
PENSACOLA, FLORIDA 32507
TEL: 850.453.4700
KEITH@WETLANDSCIENCES.COM

PROJECT NAME: PK Lighting Survey

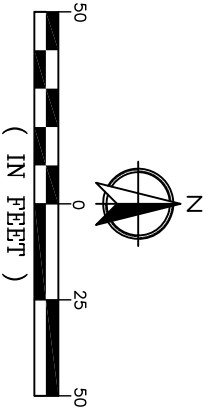
Index #5

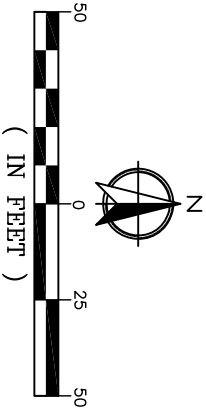
PROJECT NO.: 2014-466

DRAWN BY: KDJ

DATE: 05/04/15

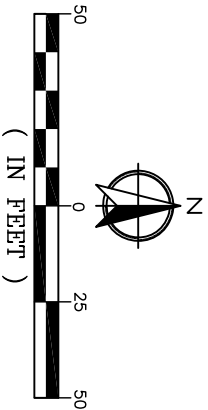
SHEET: 7 OF 31

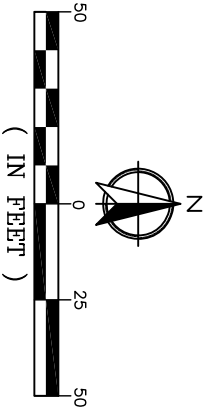


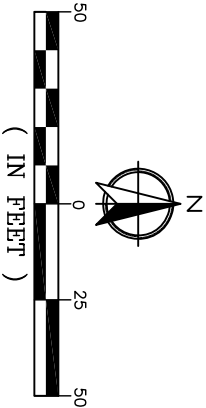
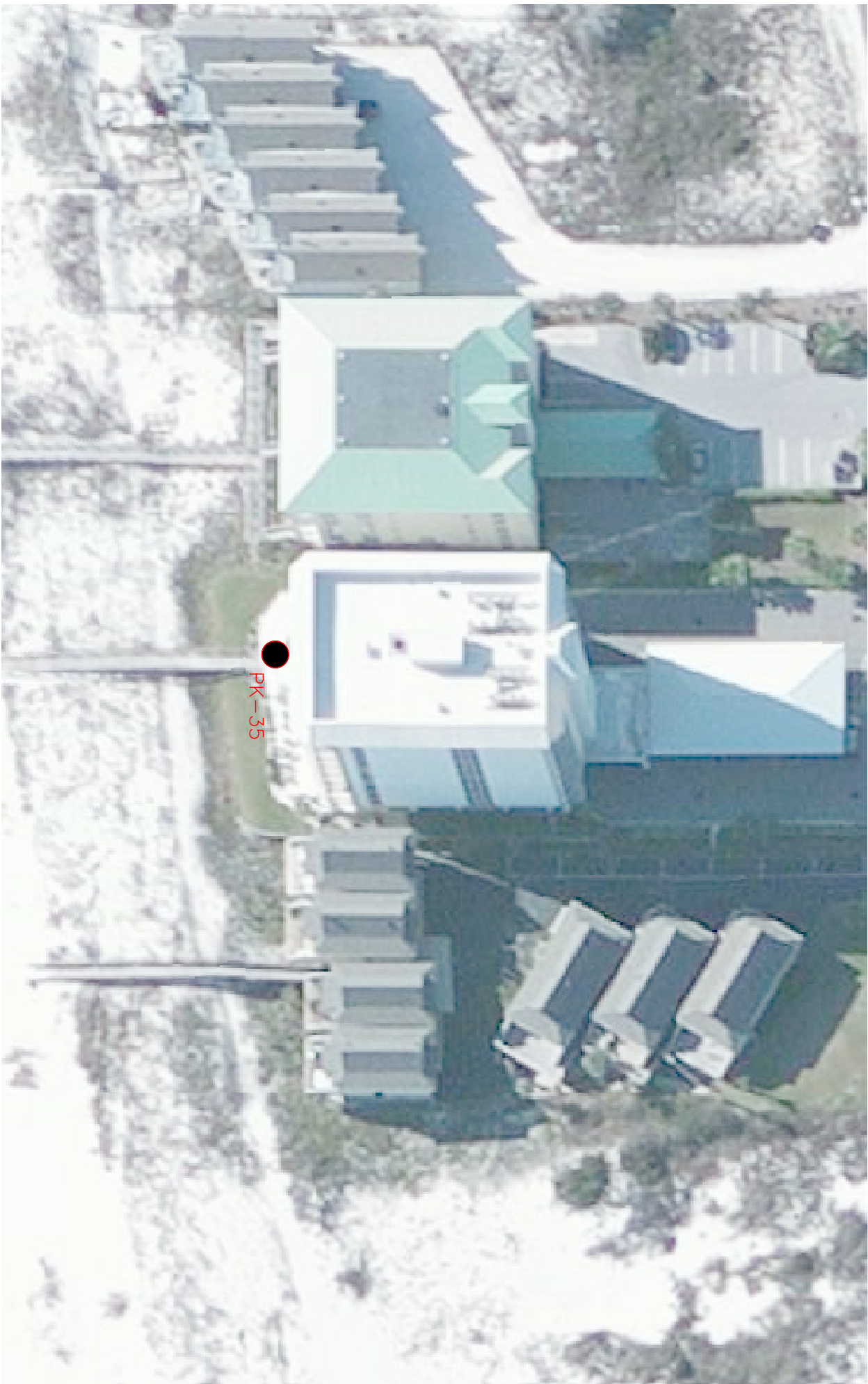




●
PK-30

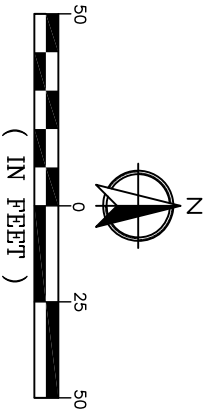


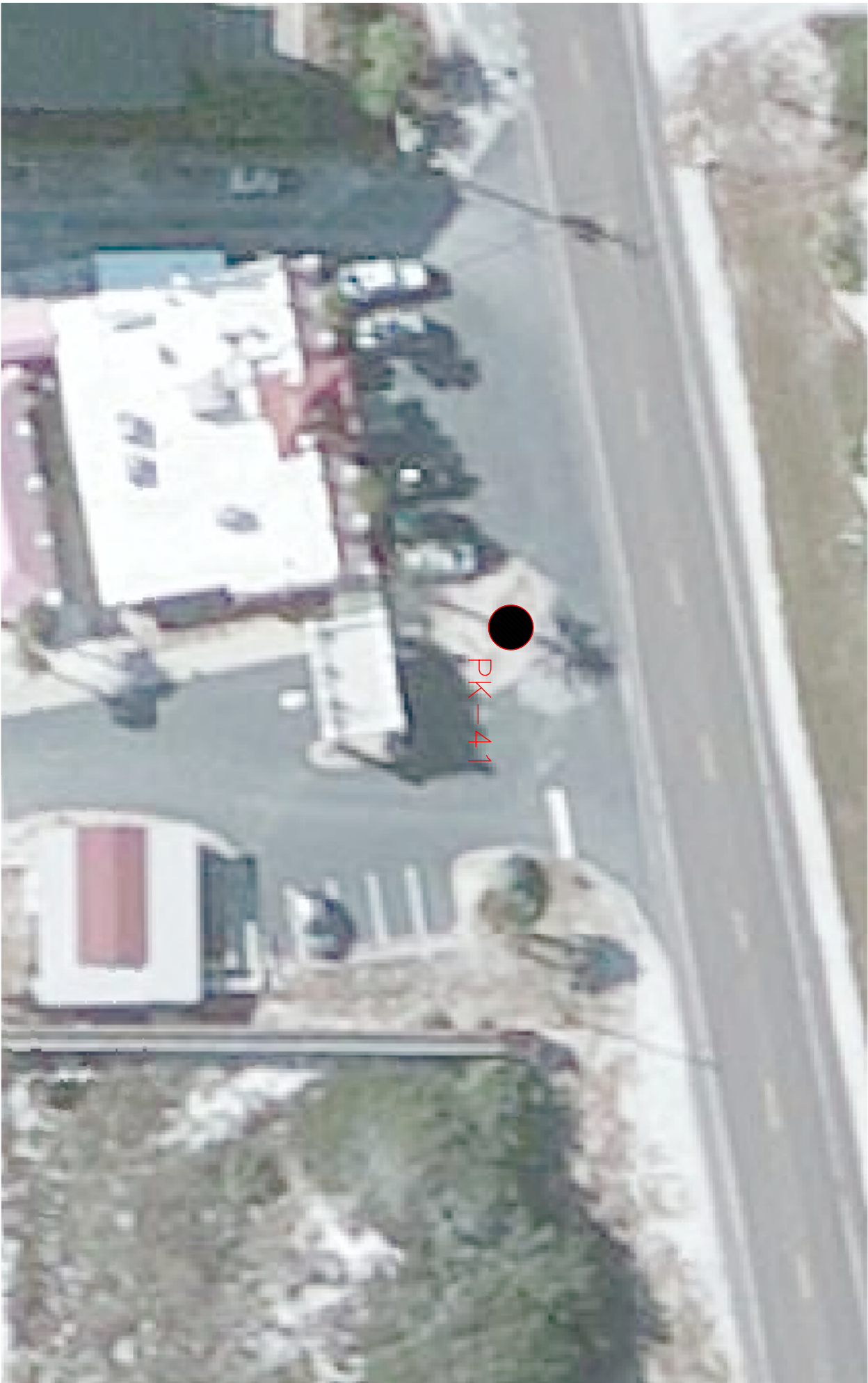




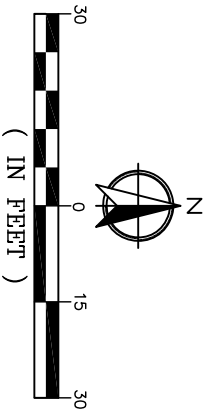


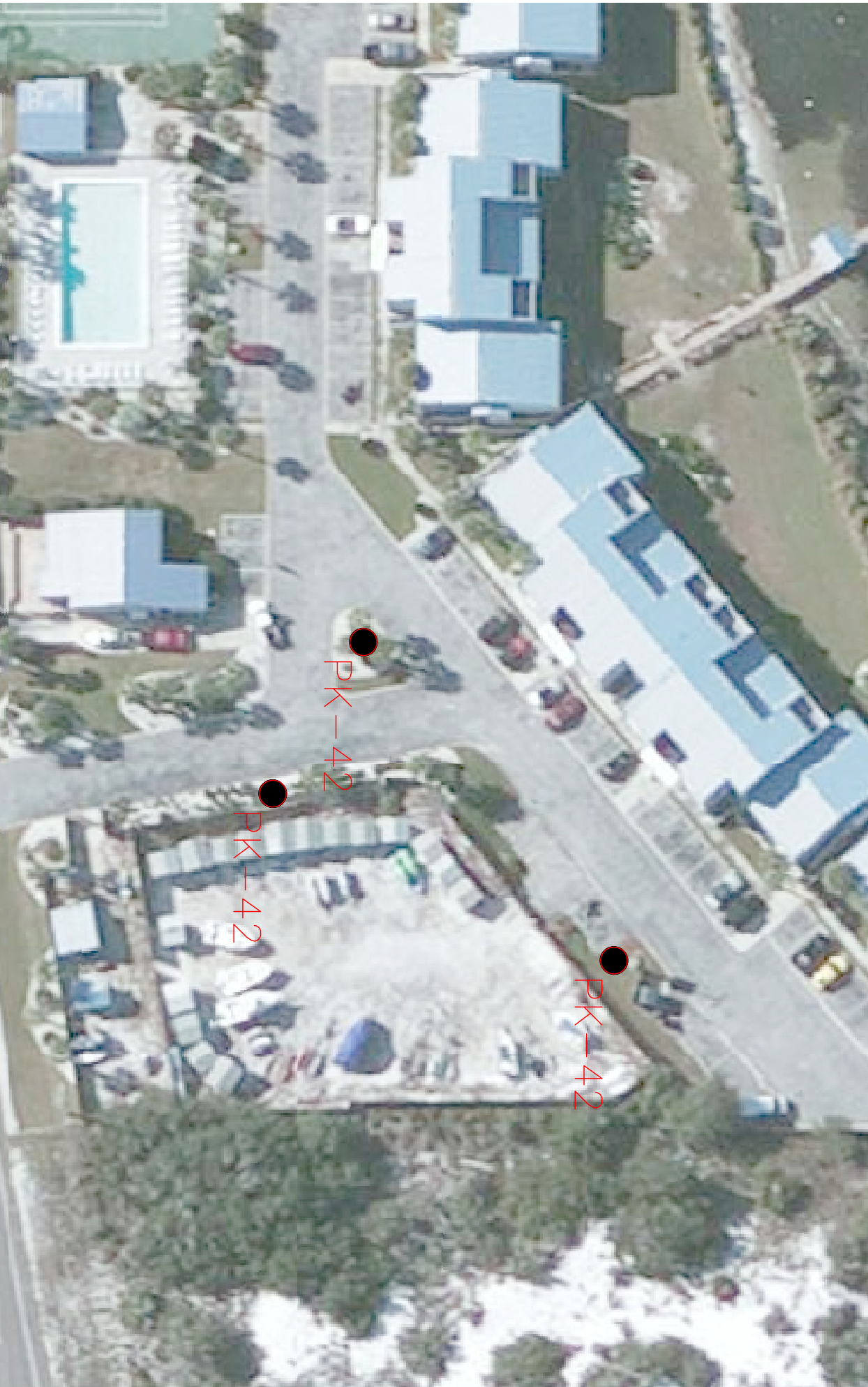
PROJECT NAME: PK Lighting Survey	
Insert #10	
PROJECT NO.: 2014-466	
DRAWN BY: KDJ	DATE: 05/04/15
SHEET: 11 OF 31	



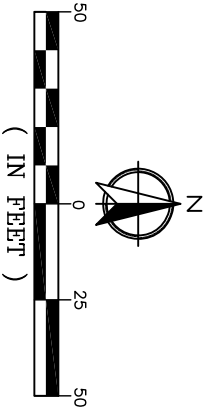


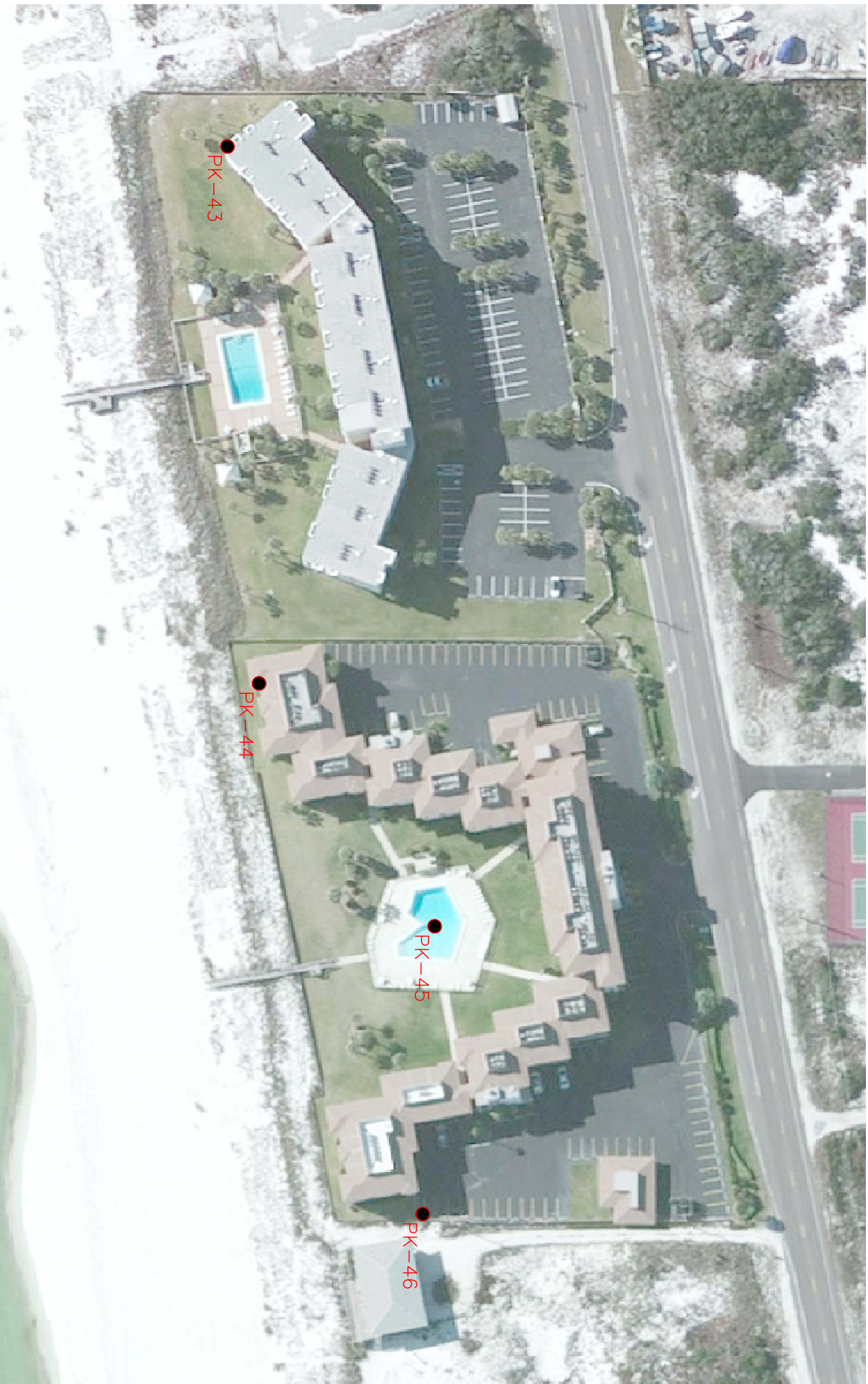
PK--41





PROJECT NAME: PK Lighting Survey	
Insert #12	
PROJECT NO.: 2014-466	
DRAWN BY: KDJ	DATE: 05/04/15
SHEET: 13 OF 31	





ENVIRONMENTAL CONSULTANTS

3308 GULF BEACH HWY
PENSACOLA, FLORIDA 32507
TEL: 850.453.4700
KEITH@WETLANDSCIENCES.COM

PROJECT NAME: PK Lighting Survey

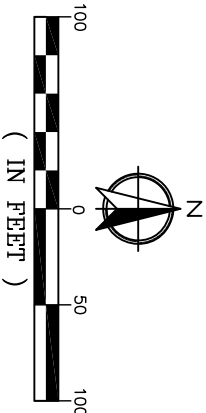
Insert #13

PROJECT NO.: 2014-466

DRAWN BY: KDJ

DATE: 05/04/15

SHEET: 14 OF 31

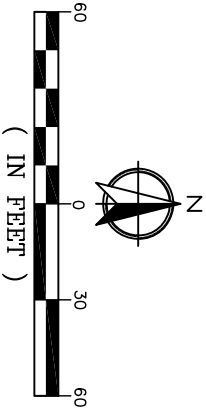


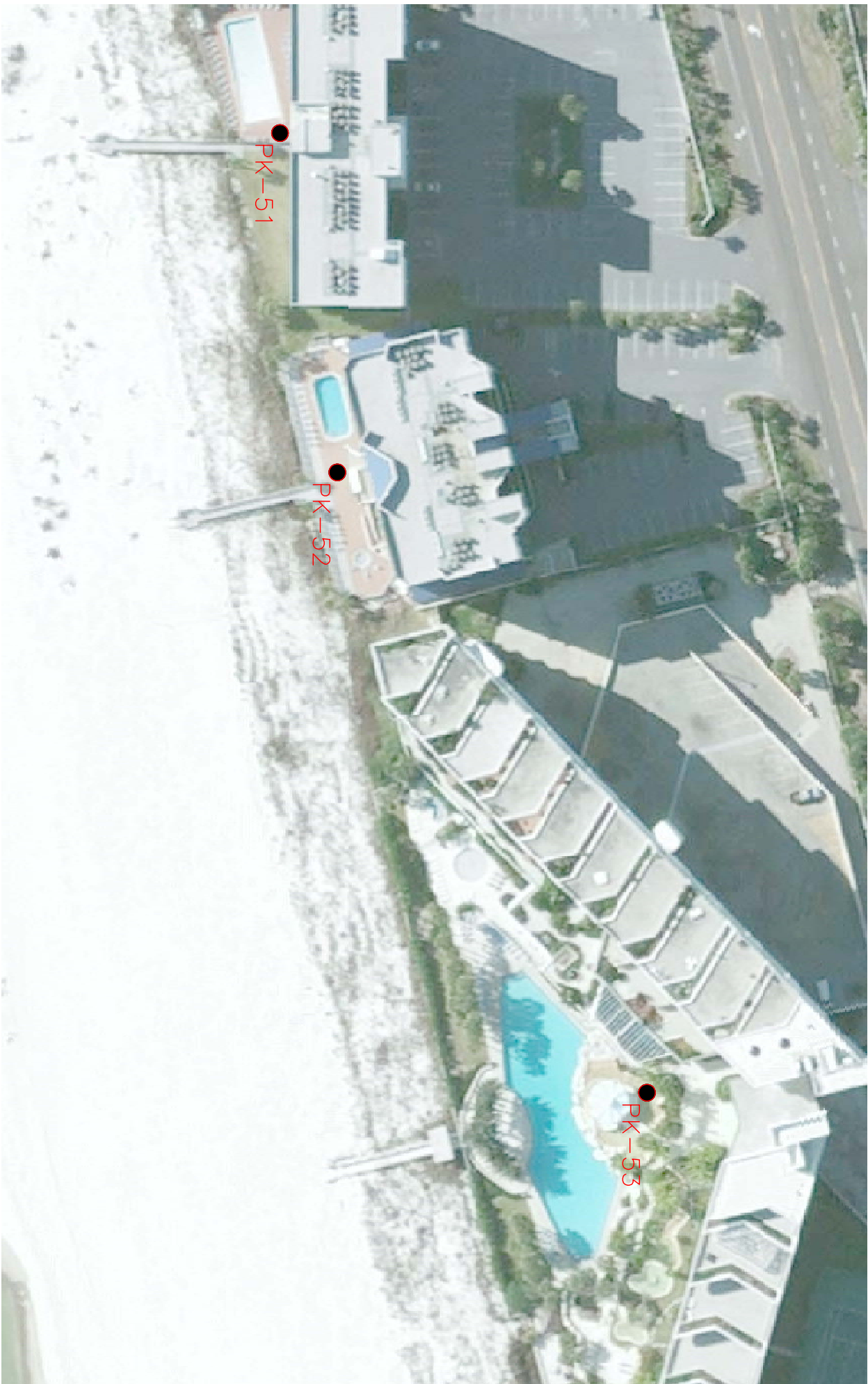


ENVIRONMENTAL CONSULTANTS

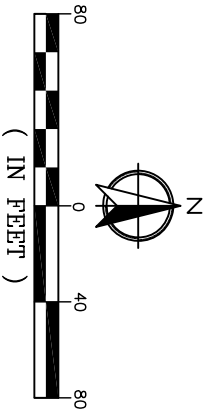
3308 GULF BEACH HWY
PENSACOLA, FLORIDA 32507
TEL: 850.453.4700
KEITH@WETLANDSCIENCES.COM

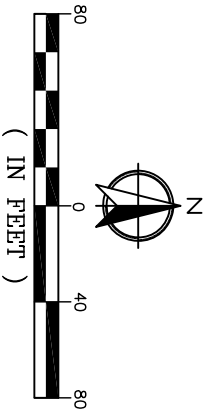
PROJECT NAME: PK Lighting Survey	
Insert #14	
PROJECT NO.: 2014-466	
DRAWN BY: KDJ	DATE: 05/04/15
SHEET: 15 OF 31	

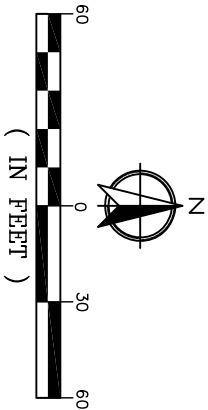


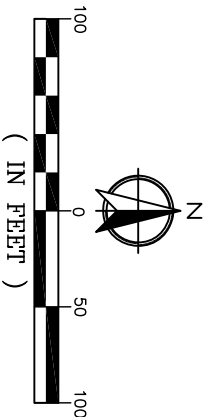


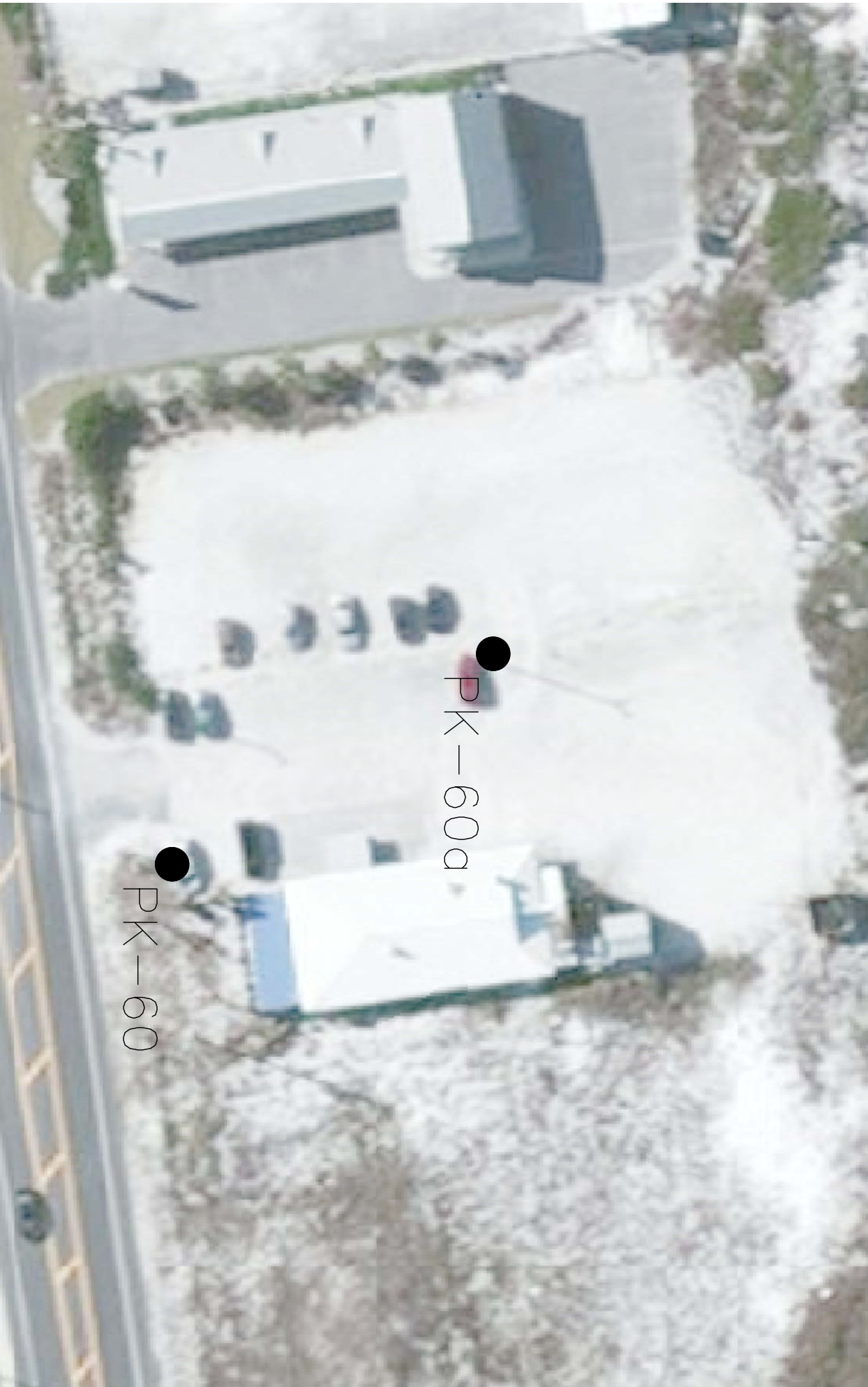
PROJECT NAME: PK Lighting Survey	
Insert #15	
PROJECT NO.: 2014-466	
DRAWN BY: KDJ	DATE: 05/04/15
SHEET: 16 OF 31	











ENVIRONMENTAL CONSULTANTS

3308 GULF BEACH HWY
PENSACOLA, FLORIDA 32507
TEL: 850.453.4700
KEITH@WETLANDSCIENCES.COM

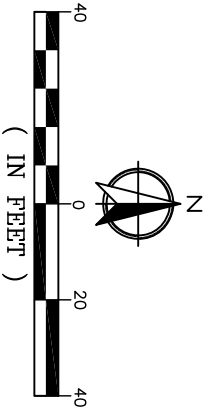
PROJECT NAME: PK Lighting Survey

Insert #19

PROJECT NO.: 2014-466

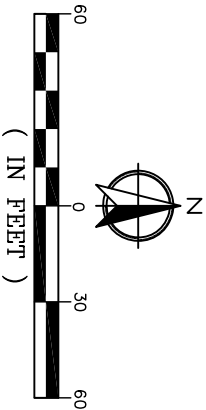
DRAWN BY: KDJ DATE: 05/04/15

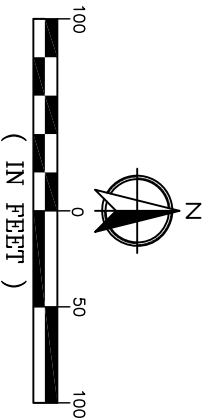
SHEET: 20 OF 31

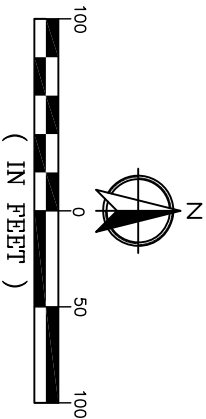




PROJECT NAME: PK Lighting Survey	
Insert #20	
PROJECT NO.: 2014-466	
DRAWN BY: KDJ	DATE: 05/04/15
SHEET: 21 OF 31	

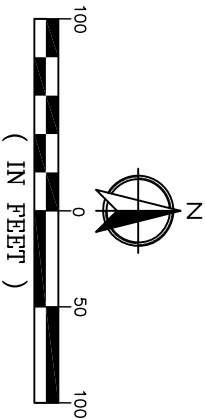


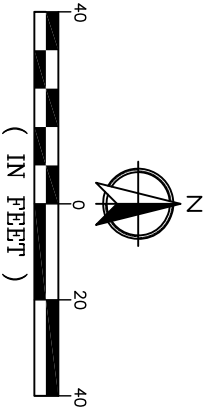






PROJECT NAME: PK Lighting Survey	
Index #23	
PROJECT NO.: 2014-466	
DRAWN BY: KDJ	DATE: 05/04/15
SHEET: 24 OF 32	







PK-77

PK-78

PK-79

PK-81

ENVIRONMENTAL CONSULTANTS

3308 GULF BEACH HWY
PENSACOLA, FLORIDA 32507
TEL: 850.453.4700
KEITH@WETLANDSCIENCES.COM

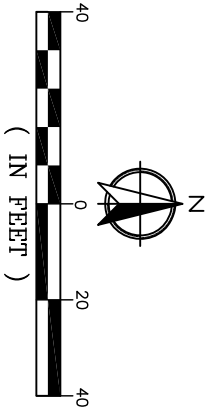
PROJECT NAME: PK Lighting Survey

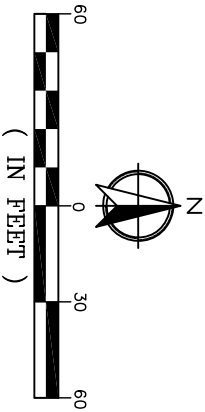
Insert #25

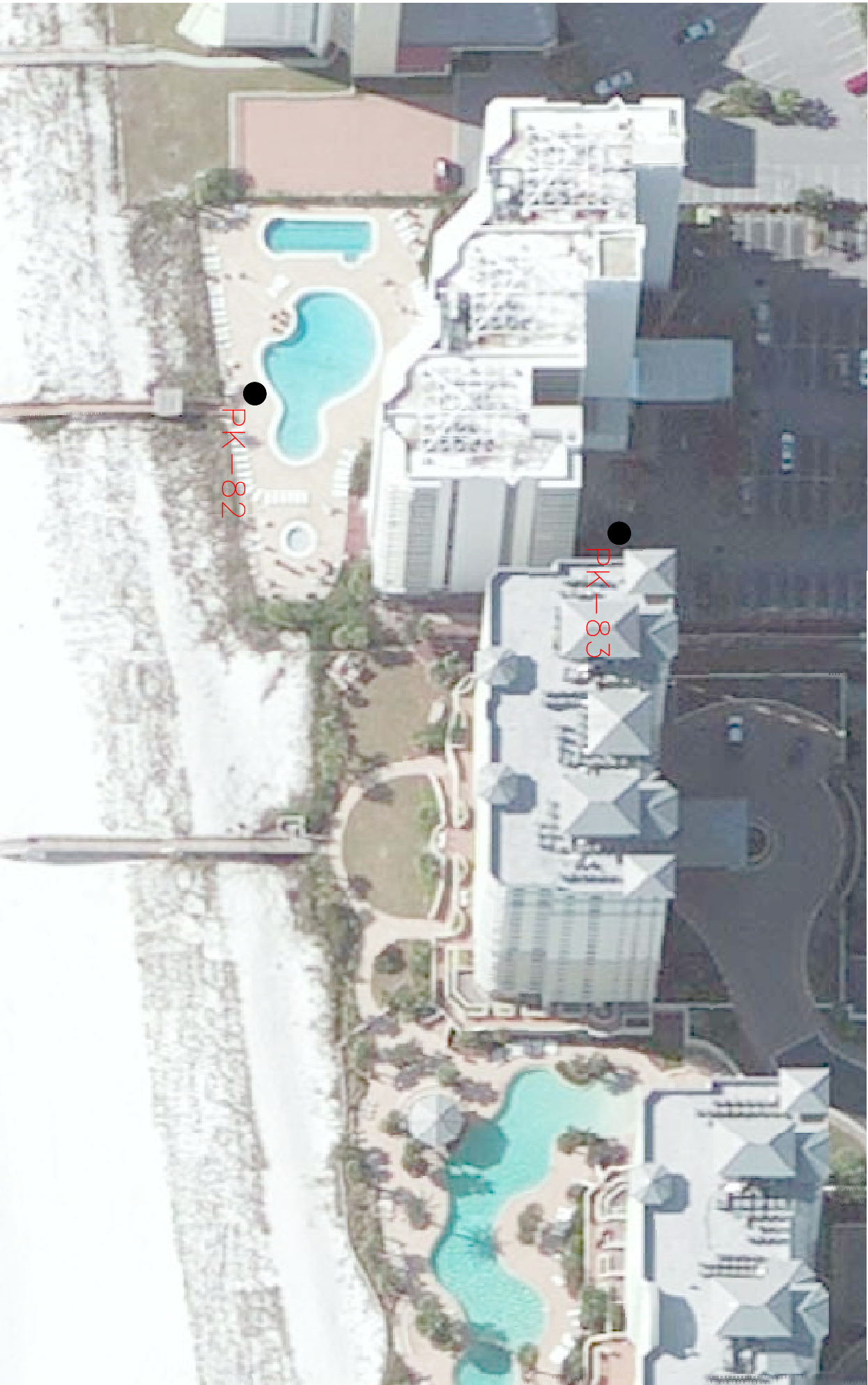
PROJECT NO.: 2014-466

DRAWN BY: KDJ DATE: 05/04/15

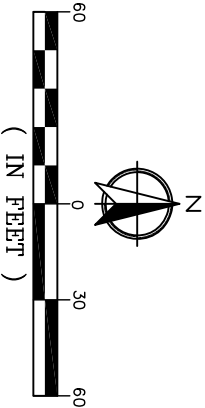
SHEET: 26 OF 31







PROJECT NAME: PK Lighting Survey	
Index #28	
PROJECT NO.: 2014-466	
DRAWN BY: KDJ	DATE: 05/04/15
SHEET: 28 OF 31	





ENVIRONMENTAL CONSULTANTS

3308 GULF BEACH HWY
PENSACOLA, FLORIDA 32507
TEL: 850.453.4700
KEITH@WETLANDSCIENCES.COM

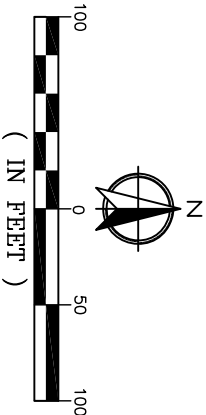
PROJECT NAME: PK Lighting Survey

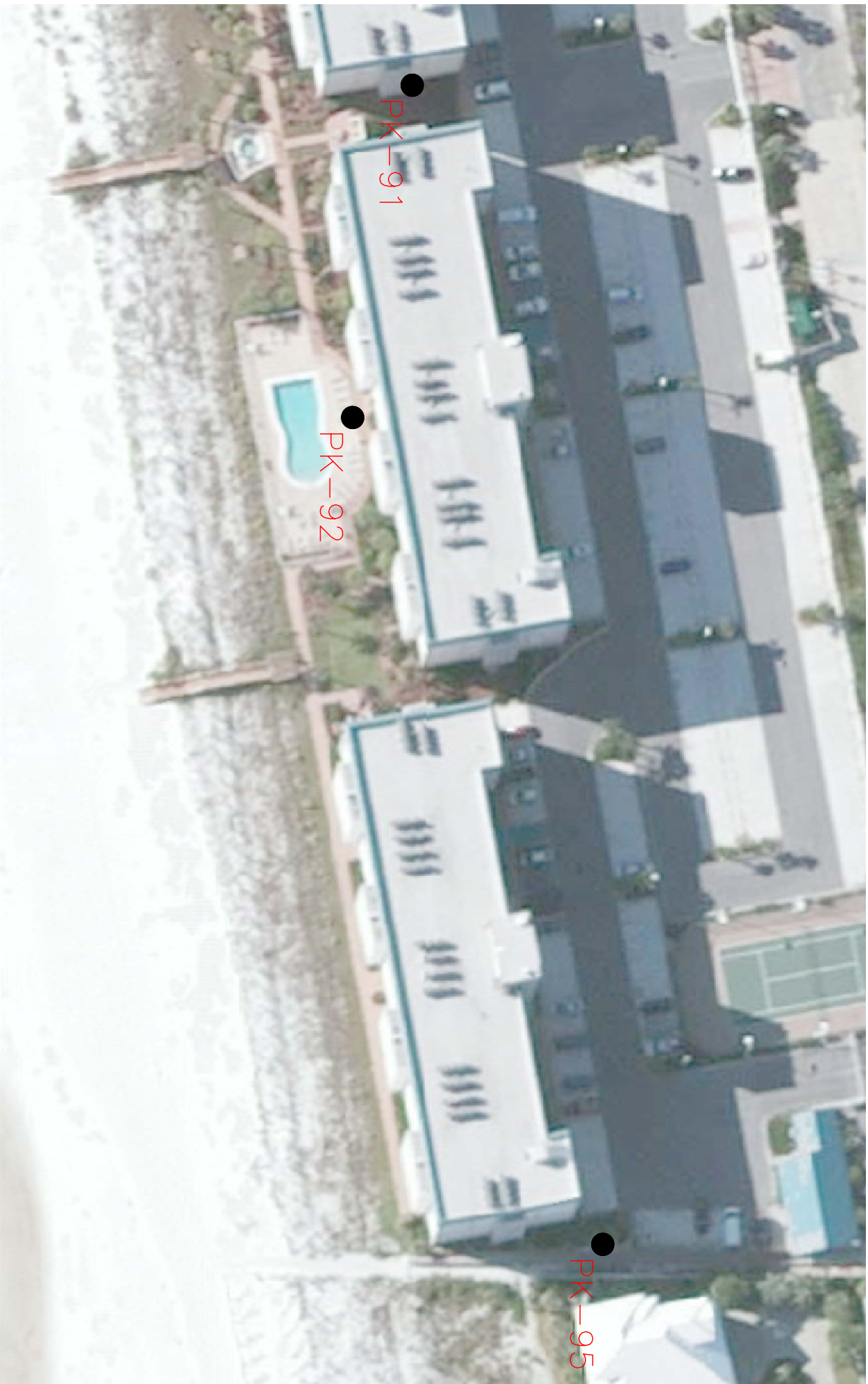
Insert #28

PROJECT NO.: 2014-466

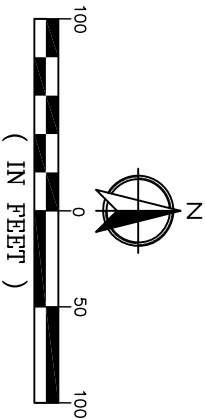
DRAWN BY: KDJ DATE: 05/04/15

SHEET: 29 OF 31





PROJECT NAME: PK Lighting Survey	
Insert #29	
PROJECT NO.: 2014-466	
DRAWN BY: KDJ	DATE: 05/04/15
SHEET: 30 OF 31	





ENVIRONMENTAL CONSULTANTS

3308 GULF BEACH HWY
PENSACOLA, FLORIDA 32507
TEL: 850.453.4700
KEITH@WETLANDSCIENCES.COM

PROJECT NAME: PK Lighting Survey

Insert #30

PROJECT NO.: 2014-466

DRAWN BY: KDJ DATE: 05/04/15

SHEET: 31 OF 31

