

# Applicant Presentations

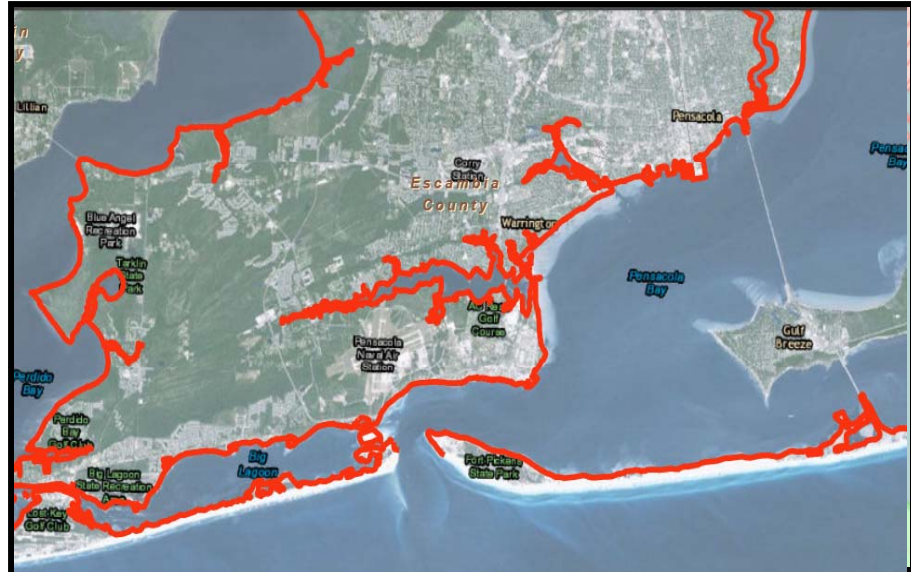
01-25-2016

## 67 – Shoreline Habitat and Resilient Coasts (SHaRC)

**Dewberry Score: 41**

**RAC Score: TBD**

**Budget: \$98,000**



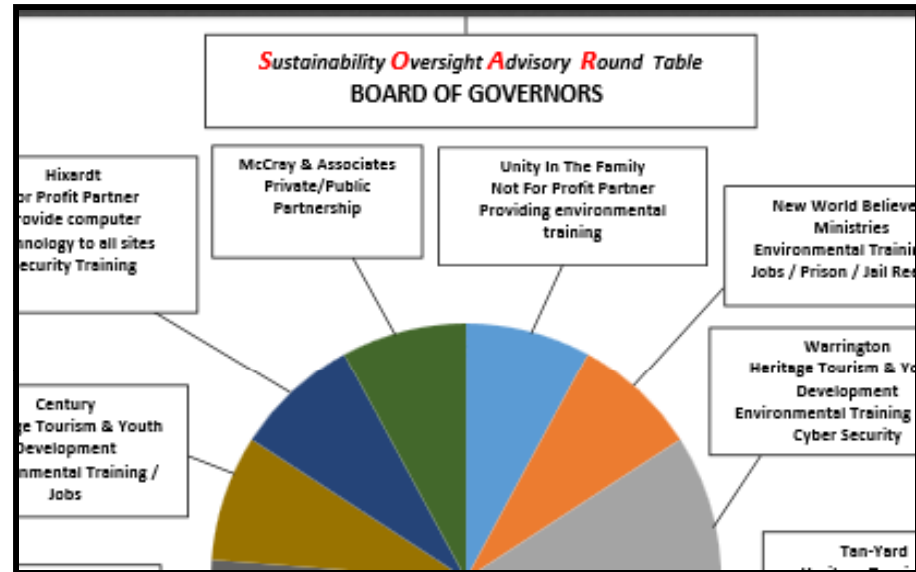
**Description:** The estuarine shoreline (approximately 216 miles) of Escambia County will be evaluated using a customized, Geographic Information System (GIS) platform to identify the need for and prioritize future shoreline restoration/stabilization with marsh planting, and/or low-profile oyster reefs projects. Site access, preliminary design, permitting, leveraging, final design and construction will come in later phases.

## 24 – SOAR WITH RESTORE

**Dewberry Score: 52**

**RAC Score: TBD**

**Budget: \$750,000**



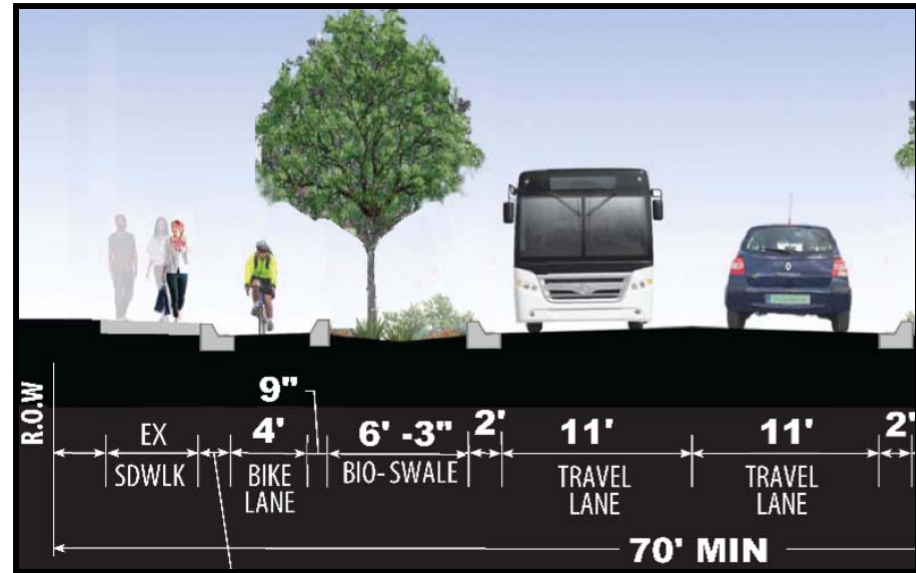
**Description:** SOAR” with Restore project focus is to offer opportunities for disadvantaged underserved persons in low income areas of minority concentration. Our mission is to develop and implement a strategic plan embracing Heritage Tourism, Workforce Development, Business Development, Environmental Justice, and Infrastructure Resiliency to secure that future.

## 14 – North Palafox St Road Diet and Beautification

**Dewberry Score: 50**

**RAC Score: TBD**

**Budget: \$3,938,767**



**Description:** This project is a three-phase modification of 1.1 miles of North Palafox Street from four lanes with a middle left/right turn lane to a two lane facility with protected bicycle lanes, shaded sidewalks and thousands of feet of bioswales. This is technically a beautification project however the net effect will be less stormwater flowing downstream in already maxed out infrastructure. In a large enough rain event the stormwater that does go into the pipe will pass through several biofilters designed into the facility.

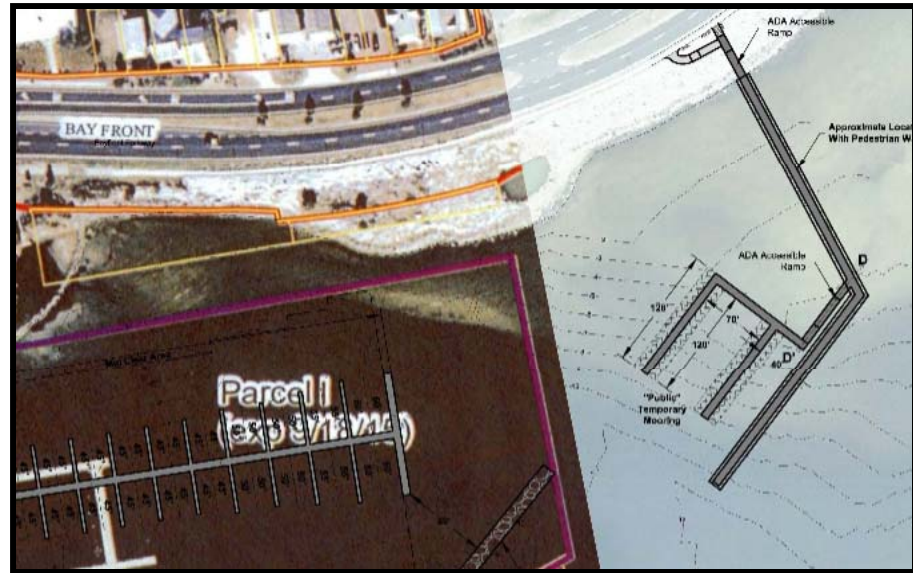
## 41 – Seville Harbor Breakwater

**Dewberry Score:** 46

**RAC Score:** TBD

**Budget:** \$4,556,708

**Phase I:** \$142,500



**Description:** The project is to be constructed on submerged land owned by the City of Pensacola. The design has been refined to include the transient docking facilities, a 160-foot long entrance breakwater to effectively attenuate waves within the marina basin, and the northern 520-foot long breakwater to protect the marina from waves out of the northeast.



## 89 – Veterans Memorial Park Improvements

**Dewberry Score:** 43

**RAC Score:** TBD

**Budget:** \$495,000



**Description:** This project will greatly enhance the Veterans Memorial Park as a tourist venue by correcting some infrastructure deficiencies, improving its accessibility to disabled citizens (particularly aging and severely wounded veterans), adding facilities that support the large and small group visits by veteran tourists, reunions, individual tourists, and other community civic groups by adding a stage area, restrooms and an education center.

## 104 – Project AIMS

**Dewberry Score:** 40

**RAC Score:** TBD

**Budget:** \$1,566,253



**Description:** The overarching goal for Phase One is to expand overall training opportunities, provide 400 participants, including 100 eligible low-income individuals from targeted areas who will receive additional wraparound supportive services, with the education and training necessary to enter and advance in high skill, wage and demand AIMS/STEM professions in order to attain economic self-sufficiency.

## 109 – Perdido Key Multi-Use Path

**Dewberry Score:** 40

**RAC Score:** TBD

**Budget:** \$800,000



**Description:** This project will provide the design work for a 10-foot wide paved, multi-use path on the north side and 5-foot collector sidewalks at various locations along the south side of Perdido Key Dr. Along the path and the sidewalks will be natural beach restoration plantings for wildlife preservation, reduction of sand migration and beautification. It will also include three ADA accessible beach access points complete with dune walkovers, with one of the access points providing ADA accessibility to waters edge.

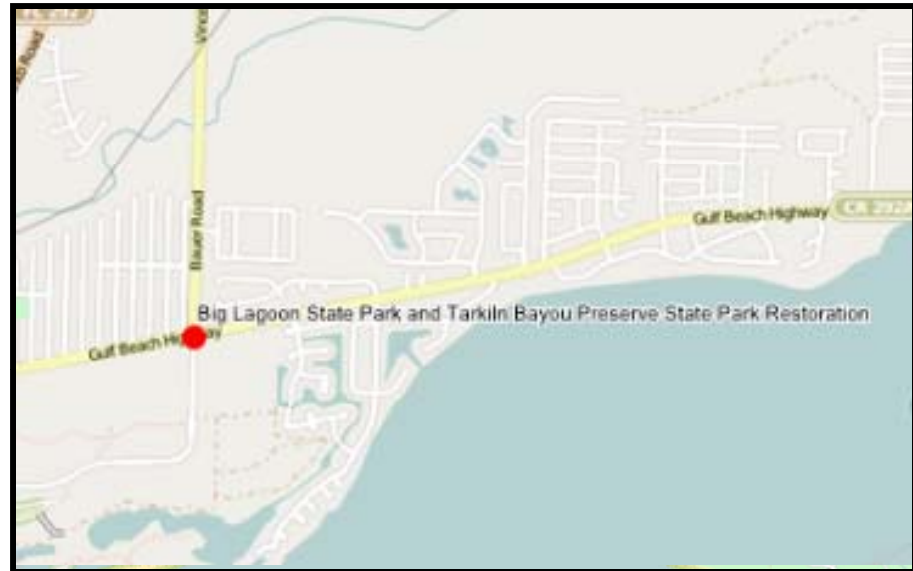


## 20 – Big Lagoon State Park & Tarkiln Bayou Preserve State Park Restoration

**Dewberry Score:** 38

**RAC Score:** TBD

**Budget:** \$118,000



**Description:** These parks include a range of natural communities that are fire dependent. The safe use of prescribed fire requires trained and skilled personnel and dependable equipment used in rough conditions and in environmentally sensitive areas. The purchase of a MarshMaster will allow much improved prescribed fire access and control in wet natural communities during periods when prescribed fires need to occur in Escambia County. Such a low impact piece of equipment will also assist in protecting environmentally sensitive lands and reducing wildfires.

## 90 – Chimney Park Stormwater Improvements

**Dewberry Score:** 43

**RAC Score:** TBD

**Budget:** \$685,000



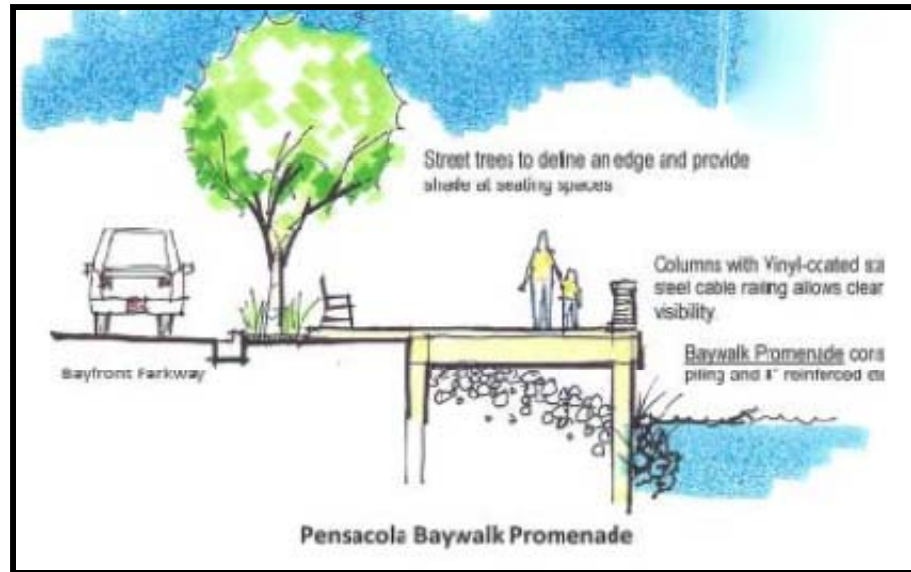
**Description:** This project includes funding to restore the old brick Chimney, provide stormwater management for the entire property, specifically the parking areas, repair areas of the existing parking lot, provide additional flood-free stabilized parking areas, provide a stormwater pollutant separator for the inlet that drains directly to Pensacola Bay, and to develop a program for outreach and volunteer engagement for park maintenance/clean-up.

## 63 – Baywalk Promenade

**Dewberry Score: 41**

**RAC Score: TBD**

**Budget: \$300,000**



**Description:** This project is designed to be a hybrid infrastructure enhancing the resilience of our coastal community, the local economy and the ecosystem by bringing the public closer to nature. It will address coastline protection issues by hardening the shoreline with the placement of a wide concrete promenade hiding the rock surfaces in place from the land to the shoreline high water mark and the planting of emergent plants along the seaward edge.

## 103 – Big Lagoon Ecosystem Restoration

**Dewberry Score:** 47

**RAC Score:** TBD

**Budget:** \$16,250,000

**Phase I:** \$4,000,000



- **Description:** The work for the Big Lagoon Ecosystem Restoration Project will be performed on the state's sovereign bottom lands of Big Lagoon, Escambia County, Florida by depositing sufficient rock and/or riprap to create a system of inshore reef. This project intends to protect existing habitat, shelter stressed habitat, and create new habitat.

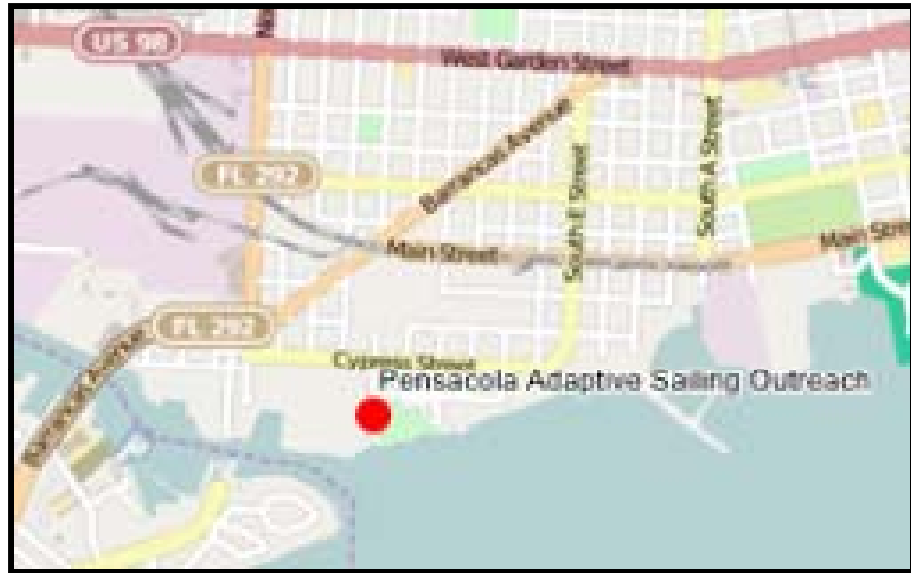
## 18 – Pensacola Adaptive Sailing Outreach

**Dewberry Score:** 42

**RAC Score:** TBD

**Budget:** \$1,000,000

**Phase I:** \$500,000



**Description:** Needs, goals, and benefits of PASO center around community mental health and providing equal leisure opportunities. Two specific needs are to support veterans who are at risk of suicide, and provide healthy activities / outlets for inner city youth and other under served groups (seniors, cancer patients, people with developmental disabilities). By pairing veterans with able bodied members of the Pensacola community the PASO program strives to provide the healing process of sailing to help citizens help themselves.

## 55 – Riparian Zone Preservation

**Dewberry Score:** 42

**RAC Score:** TBD

**Budget:** \$1,000,000

**Phase I:** \$100,000



**Description:** This project will identify and secure undeveloped riparian areas along vulnerable waterways such as Carpenter Creek, Jack's Branch, and Bayou Grande. The vision of this proposal is to protect surface water quality and water quantity by improving and expanding riparian buffers of at least 100'; identify lands in sensitive areas that should remain undeveloped; develop an incentive program for willing private and commercial land owners for conservation easements; and pursue avenues to purchase available parcels for the establishment of greenways



## 27 – Cooperative Invasive Species Management

**Dewberry Score:** 45

**RAC Score:** TBD

**Budget:** \$1,530,604



**Description:** The proposed work includes creation of a team of dedicated restoration professionals, and would operate with existing management plans and established goals and objectives of the Florida State Parks, and other land-holding agencies in the GCPEP Partnership in Escambia County. Invasive species control and ecological restoration would be the two primary focuses of this team of professionals, with demonstrated sensitivity to protecting natural resource values in complex ecosystems.