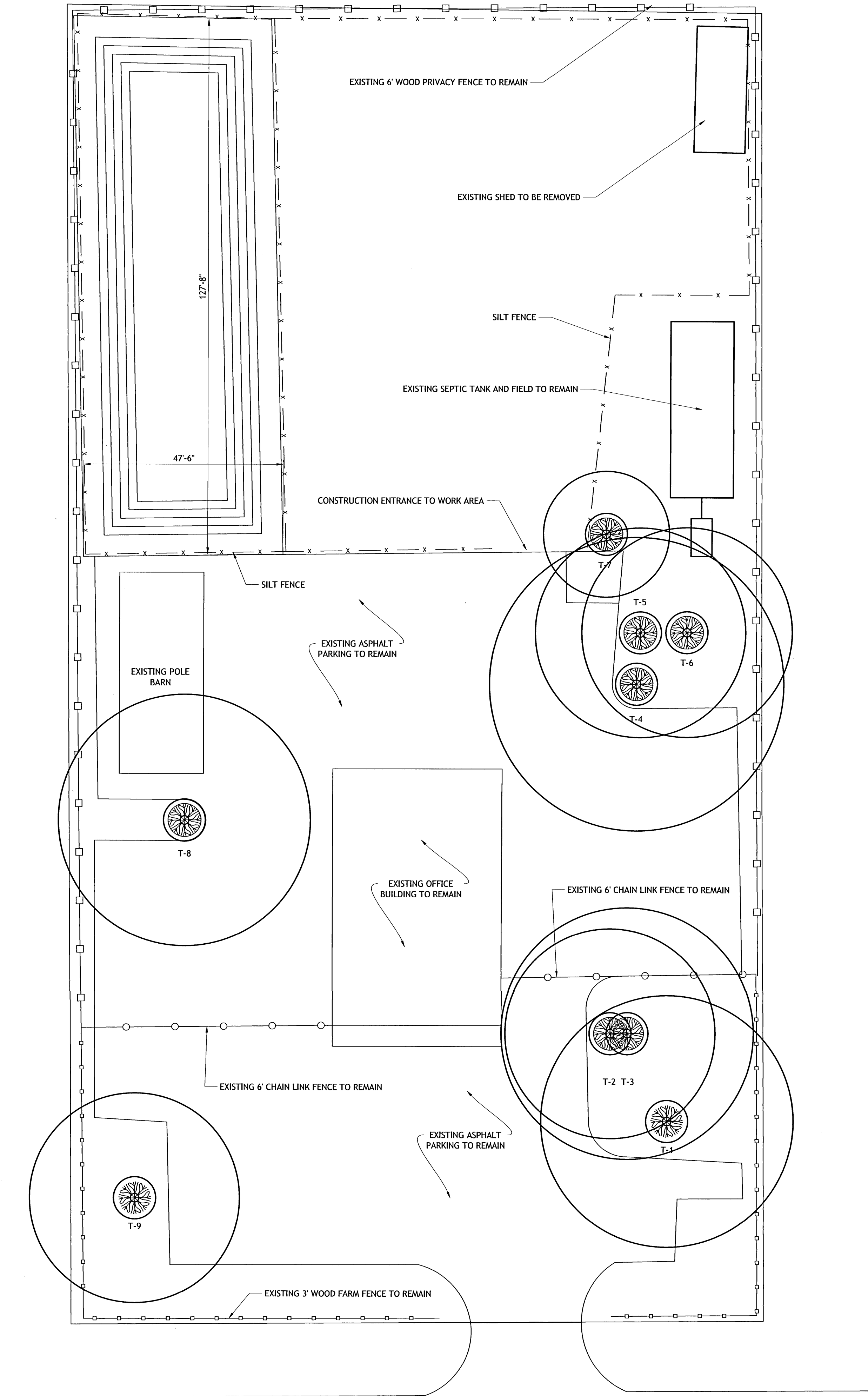
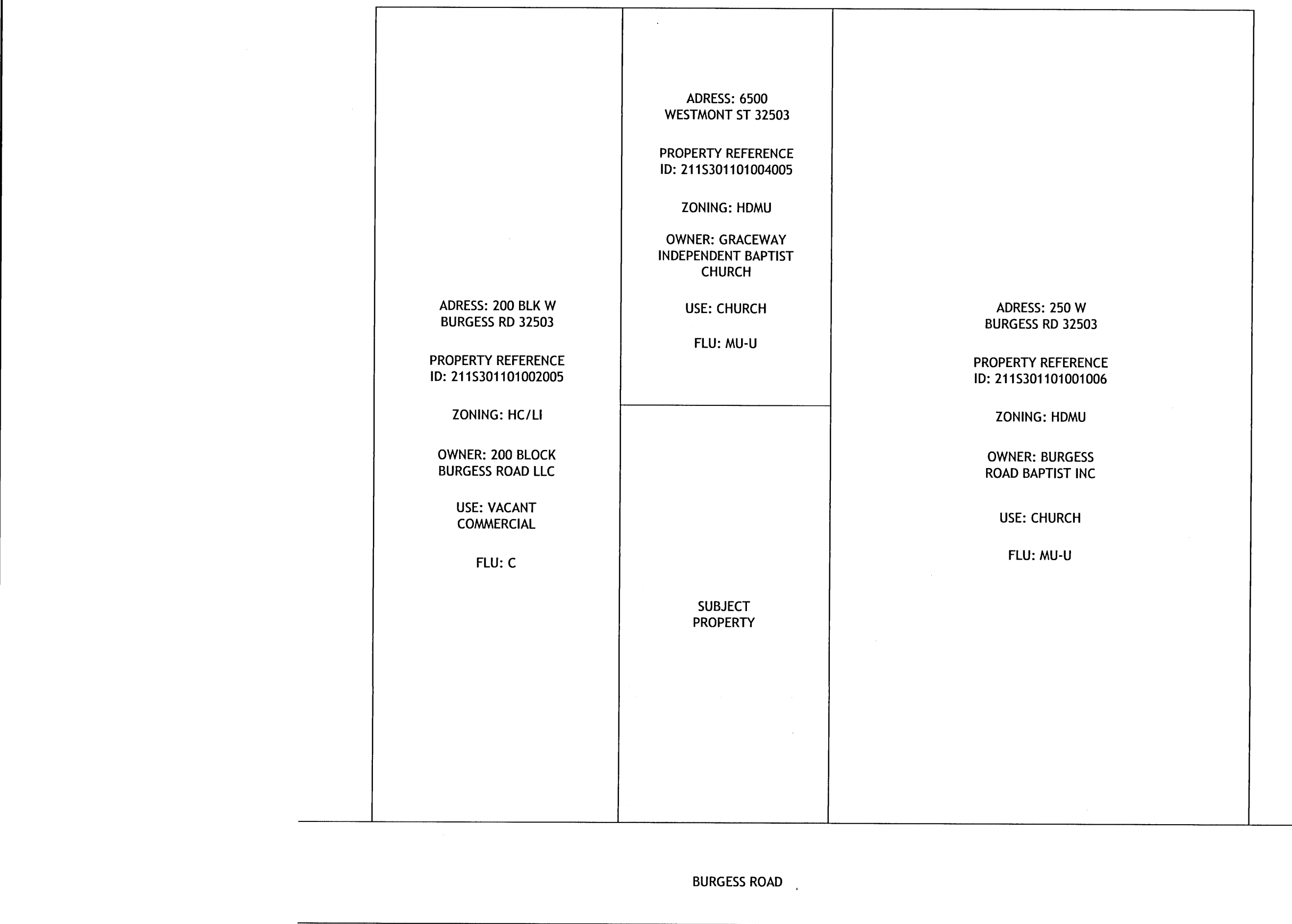


C1-1 EXISTING SITE CONDITIONS W/ DEMOLITION
SCALE: 1/16" = 1'-0"



C1-2 SURROUNDING PROPERTIES
SCALE: 1/800



LEGEND

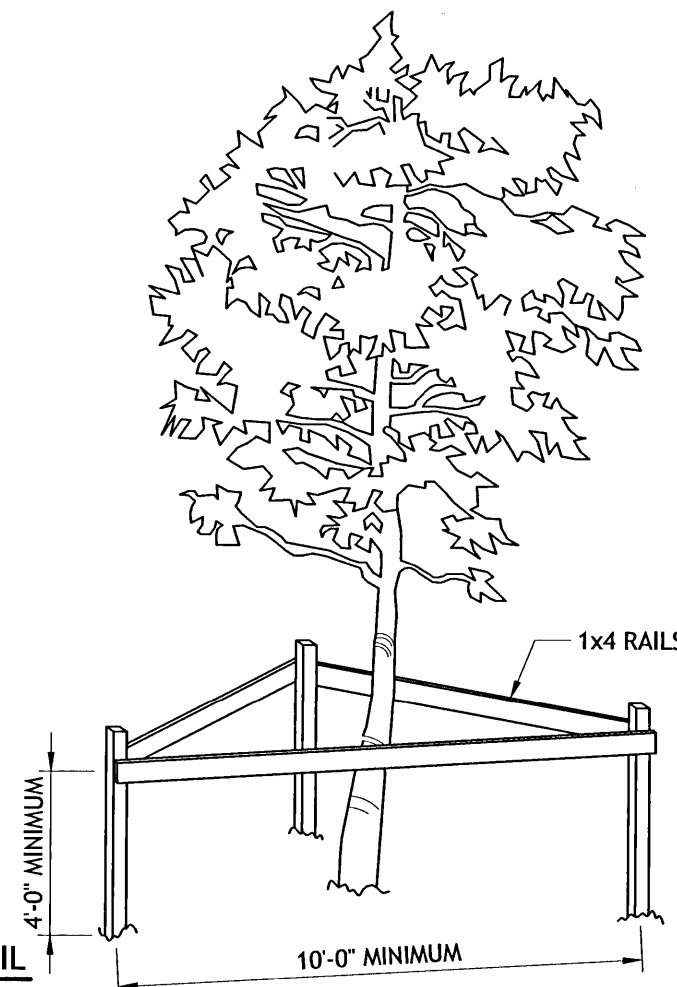
- -FOUND 1/2" CAPPED IRON ROD L.S. #6421
 - ⊙ -FOUND PLAIN 5/8" IRON ROD
 - ⊙ -FOUND PLAIN 1/2" IRON ROD
 - ⊙ -FOUND PLAIN 1" CRIMPED IRON PIPE
 - ⊙ -FOUND PLAIN 1" IRON PIPE
 - ⊙ -FOUND PLAIN 1/2" IRON PIPE
 - ⊙ -FOUND PLAIN "X" CUT IN CONCRETE
 - ⊙ -SET PLAIN "X" CUT IN CONCRETE
 - ⊙ -SET 1/2" CAPPED IRON ROD L.B. #7919
 - ⊙ -POWER POLE WITH GUY ANCHOR
 - — — — — OVERHEAD UTILITY LINES
 - ⊙ -BELL SOUTH MANHOLE
 - PSM PROFESSIONAL SURVEYOR AND MAPPER
 - L.B. LICENSED BUSINESS
 - R/W RIGHT-OF-WAY
 - PC POINT OF CURVATURE
 - P PLAT
 - F FIELD
 - W WATER METER
 - — W — — APPROXIMATE LOCATION OF WATER LINE
 - — SS — — APPROXIMATE LOCATION OF SANITARY SEWER LINE
- NOTE: CONTRACTOR TO VERIFY LOCATIONS OF WATER AND SEWER TAP.

TREE LEGEND

- ⊙ EXISTING TREE TO REMAIN
- ⊙ EXISTING TREE TO BE REMOVED

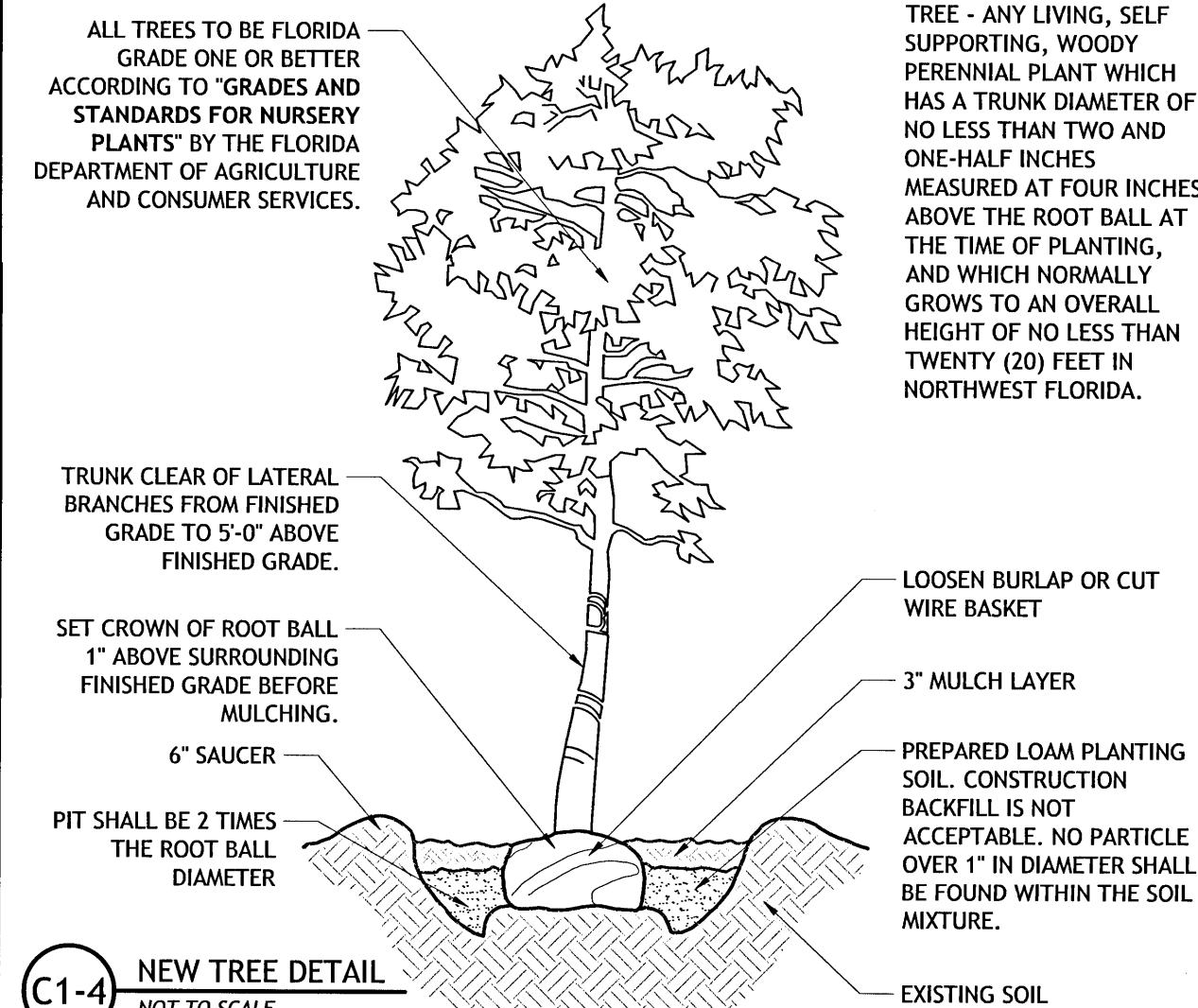
- NOTES:
- ALL ADEQUATE TREE PROTECTION MEASURES AND BARRICADES SHALL BE INSTALLED PRIOR TO SITE DISTURBANCE AND MAINTAINED IN GOOD WORKING ORDER UNTIL PROJECT IS COMPLETE AND SITE BECOMES STABILIZED. BARRICADES SHALL BE POSITIONED NO CLOSER TO THE TREE THAN 50% OF THE CRITICAL ROOT ZONE (CRZ) AS SHOWN ON THE DRAWINGS. CRZ IS DEFINED AS 1' RADIUS PER 1" TREE DIAMETER.
 - NO POTENTIALLY HARMFUL ACTIVITY SHALL OCCUR WITHIN PROTECTIVE BARRIER UNLESS SPECIFICALLY APPROVED BY THE COUNTY.

C1-3 TREE BARRICADE DETAIL
NOT TO SCALE

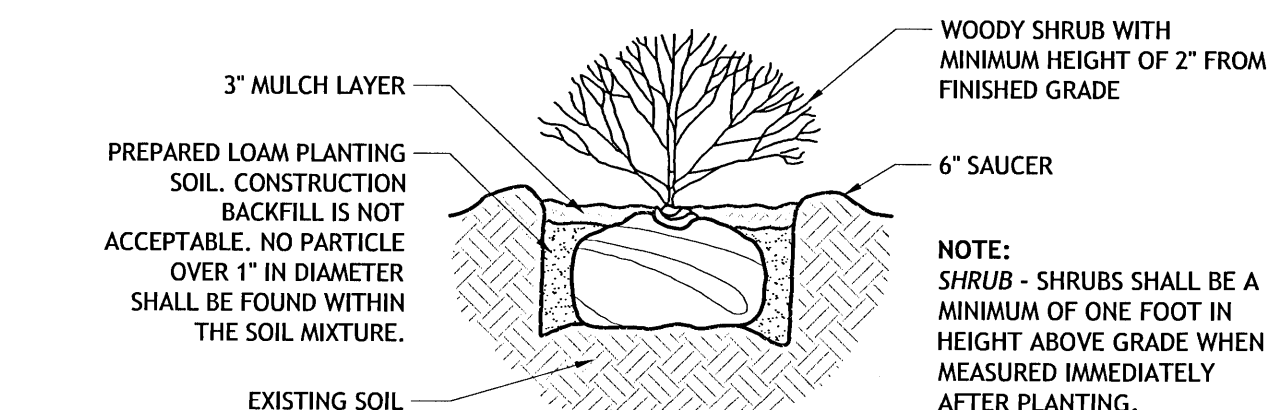


TREE CHART

TREE #	DIAMETER	TYPE	SPREAD	NOTES
T-1	49"	LIVE OAK	30'	TO REMAIN
T-2	28"	LIVE OAK	25'	TO REMAIN
T-3	27"	LIVE OAK	30'	TO REMAIN
T-4	36"	LIVE OAK	35'	TO REMAIN
T-5	28"	LIVE OAK	30'	TO REMAIN
T-6	30"	LIVE OAK	25'	TO REMAIN
T-7	30"	LIVE OAK	15'	TO REMAIN
T-8	47"	LIVE OAK	30'	TO REMAIN
T-9	35"	LIVE OAK	25'	TO REMAIN



C1-4 NEW TREE DETAIL
NOT TO SCALE



C1-5 NEW SHRUB DETAIL
NOT TO SCALE

PRINTED: 2019-11-25
If this document is digitally signed, printed copies are not considered signed and sealed and the SHA authentication code must be verified on any electronic copies.

Title: **SITE PLAN**
OFFICE / WAREHOUSE BUILDING
370 W BURGESS ROAD
PENSACOLA, FL 32503
Prepared for: **PUMP & PROCESS EQUIPMENT INC.**

VOELKEL
ENGINEERING
103 Bay Bridge Dr. Gulf Breeze, FL 32561
Office: (850) 288-0333
www.voelkelengineering.com
FL CA: 35333

Date: _____
Revision: _____

FOR REVIEW ONLY
without signature and seal.

J. Christian Voelkel
FLPE 82229

Designed By: JCV / DLK
Checked By: JCV
Project #: 000-211043

Scale: As Noted

Sheet: C1

If this document is digitally signed, printed copies are not considered signed and sealed and the SHA authentication code must be verified on any electronic copies.

Title: **SITE PLAN**
OFFICE / WAREHOUSE BUILDING
370 W BURGESS ROAD
PENSACOLA, FL 32503
Prepared for: **PUMP & PROCESS EQUIPMENT INC.**

VOELKEL
ENGINEERING

103 Bay Bridge D, Gulf Breeze, FL 32561

Office: (850) 288-0333
www.VoelkelEngineering.com

FL CA: 33538

Date _____

Revision

FOR REVIEW ONLY
without signature and seal.

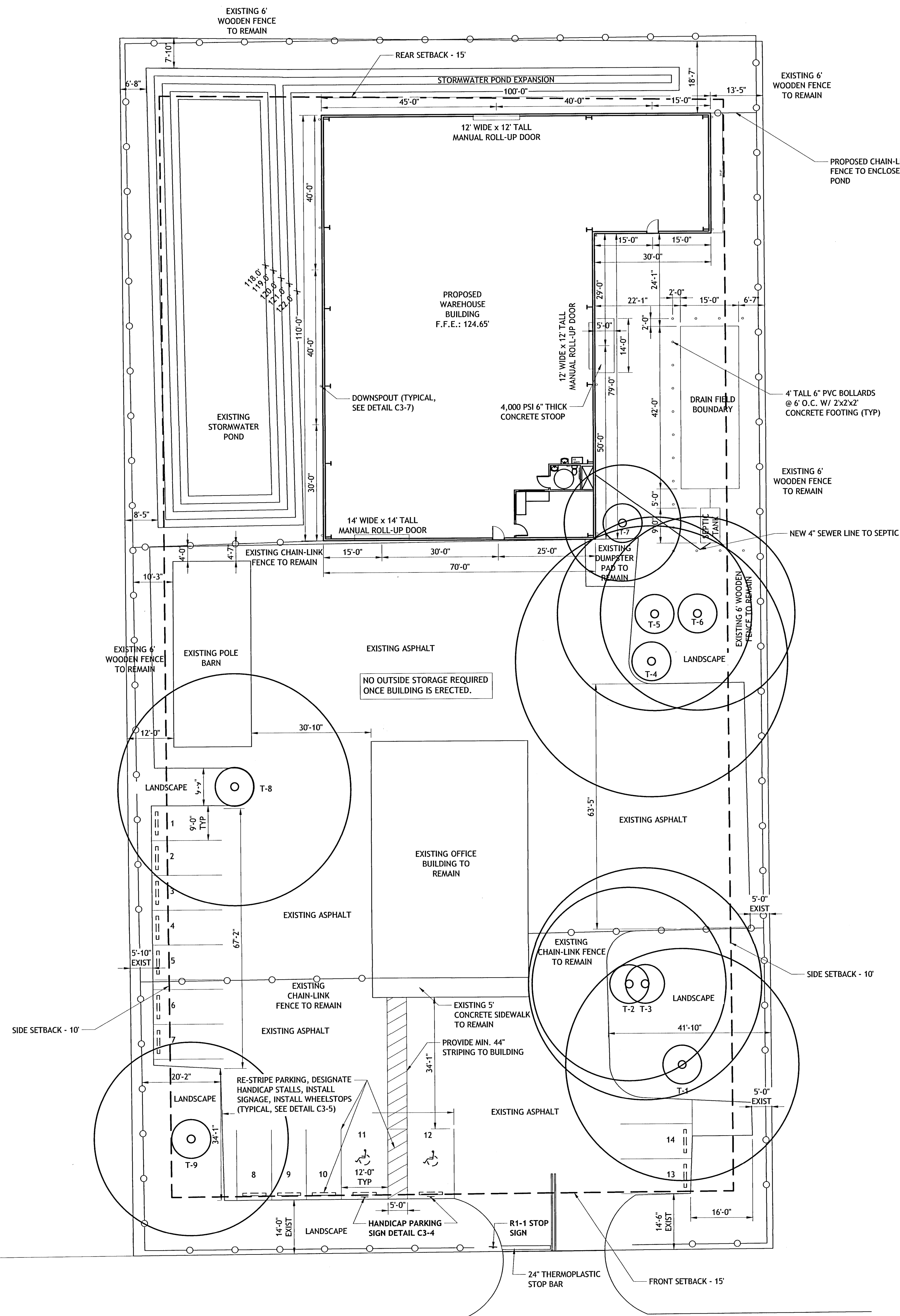
8/11/22

J. Christian Voelkel FLPE 8222

Designed By: JCV / DLK
Checked By: JCV
Project #: 000-211043

Scale: As Noted

Sheet: C2



EXISTING FIRE HYDRANT #2147.
TEST DATE JULY 26, 2019
FLOW: 1190GPM
STATIC PRESSURE: 60PSI RESIDUAL: 52PSI
LOCATED 437' FROM FURTHEST CORNER
OF NEW BUILDING "AS THE HOSE LIES".

C2-1 PROPOSED SITE PLAN
SCALE: 1/16" = 1'-0"

