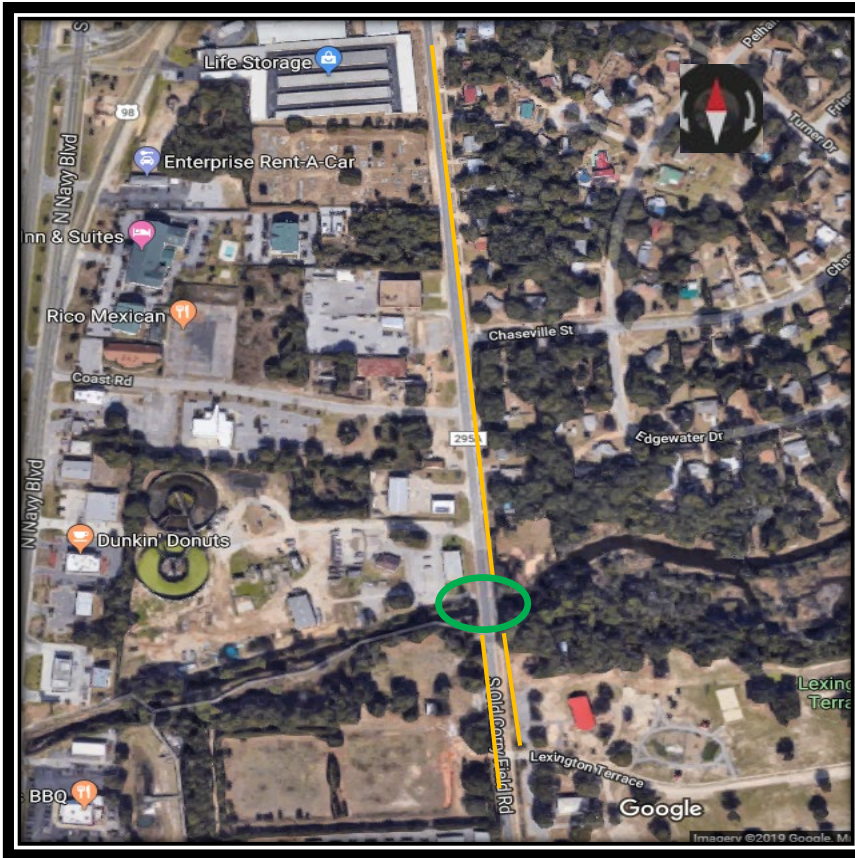


South Old Corry Field Rd Bridge Replacement, Drainage and Sidewalk Improvements

02/20/2019



Location	Length	Construction Cost	Funding Source	
S Old Corry Fld Rd from Warrington Middle school to Lexington Terrace	2375ft	\$3,355,256.19	LOST	\$3,406,316.92

The project includes the installation of curb & gutter, drives, drainage, and sidewalk improvements along the eastern right-of-way of CR 295A (South Old Corry Field Road) from just south of Warrington Middle School to the Bridge, both sides to the entrance to the park south of the Bridge, and the demolition of the existing box culvert along with existing roadway and construction of a new precast concrete bridge with raised roadway.