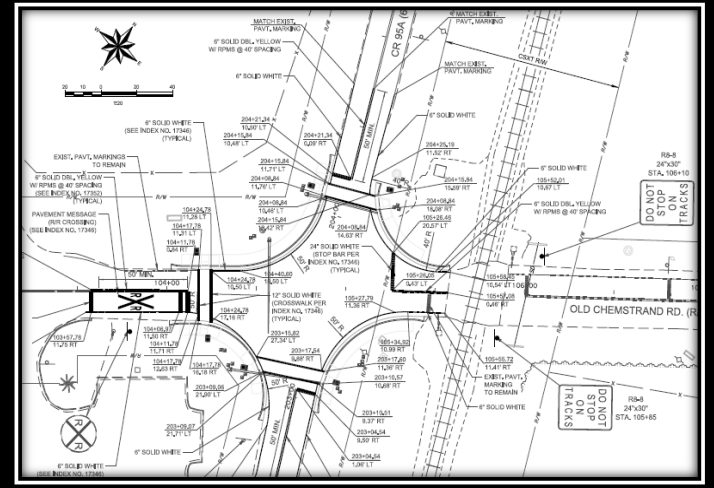
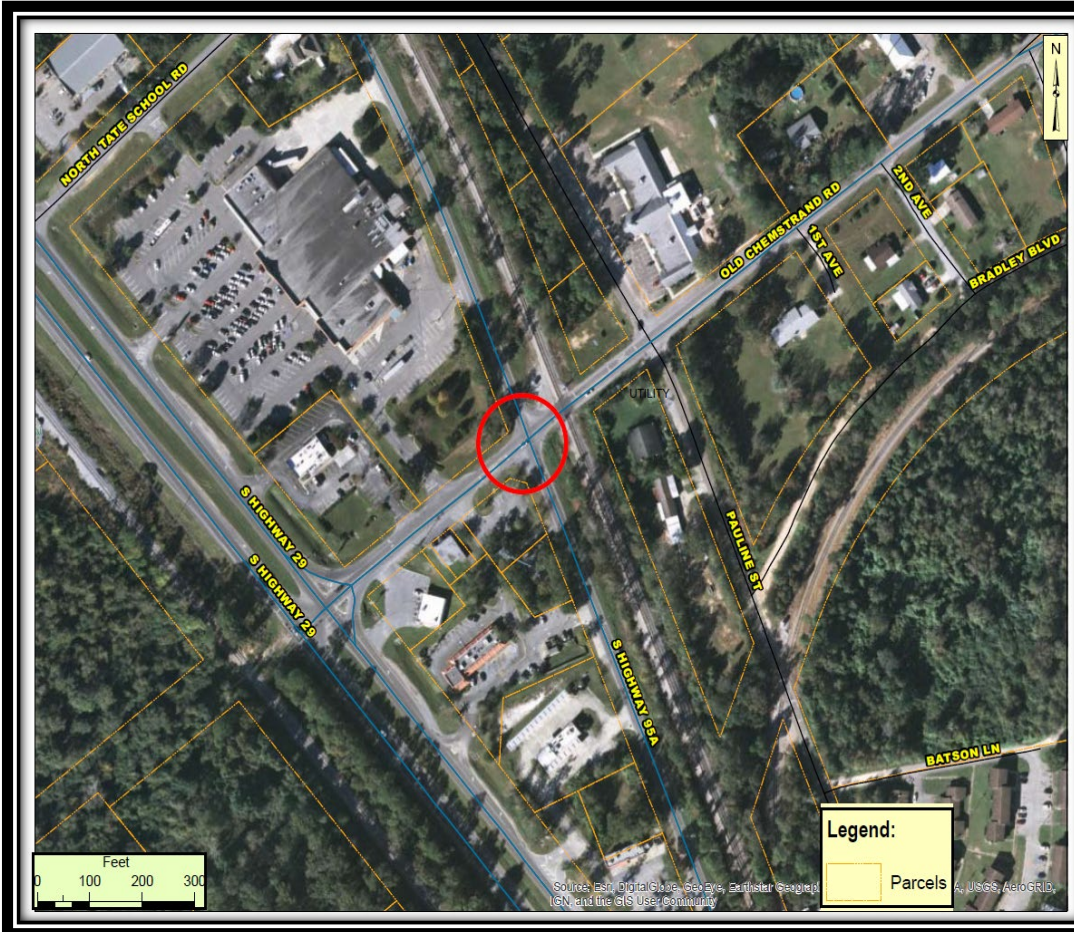


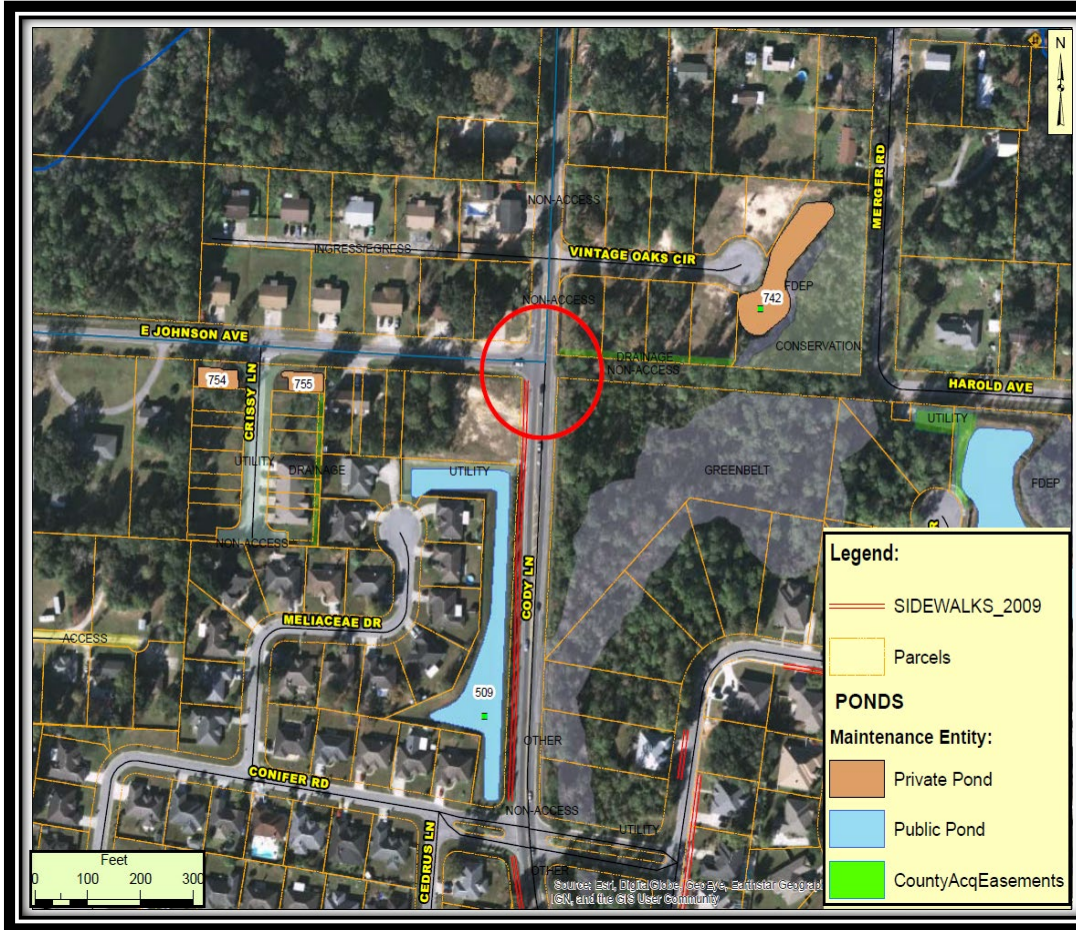
CR95A AT OLD CHEMSTRAND SIGNALIZATION



Location	Length	Construction Est	Funding Source	
Intersection of CR95A at Old Chemstrand Road	142ft	\$325,000	LOST	\$330,000

The project includes the signalization upgrades at the intersection of CR95A at Old Chemstrand Road. This project also includes the coordination and permitting with CSX Railroad and the installation of ADA compliant sidewalk features in each quadrant for future expansion.

EAST JOHNSON AVENUE AT CODY LANE SIGNALIZATION



Location	Length	Construction Est	Funding Source	
Intersection of Johnson Avenue and Cody Lane	558ft	\$300,000	LOST	\$1,260,000*
				*Shared with Detroit

The project includes the signalization upgrades at the intersection of East Johnson Avenue and Cody Lane. This project also includes the installation of an ADA compliant sidewalk from Chrissy Lane to East Johnson Avenue.