

**BOARD OF COUNTY COMMISSIONERS  
ESCAMBIA COUNTY, FLORIDA**

**OFFICE OF PURCHASING**

213 PALAFOX PLACE, 2<sup>nd</sup> Floor  
P.O. BOX 1591  
PENSACOLA, FL 32591-1591  
TELEPHONE (850)595-4980  
(SUNCOM) 695-4980  
TELEFAX (850)595-4805

<http://www.myscambia.com/business/solicitations>

CLAUDIA SIMMONS  
Purchasing Manager



October 14, 2016

To: All Known Prospective Proposers

**ADDENDUM NUMBER 1:**

Re: Automated Fuel Management System  
Specification Number: PD 15-16.104

Bidders:

We recently sent you a Request for Proposal on the above mentioned specification.

This Addendum #1 provides for:

**Response to Questions**

1. Question – Would Escambia County confirm the number of fuel island controllers and dispensing hoses to be controlled and communications at each of the sites?

Response – See the following response to the graph provided:

Site Name	Fuel Islands Controllers	Dispensing Hoses	Communication To be Proposed
Century Facility	1	2 Gasoline	Fiber Optic to Network
Fleet Maintenance	1	8 <u>4</u> Diesel, 4 <u>4</u> Gasoline	Fiber Optic to Network
Public Safety	1	1 Diesel, <u>1</u> Gasoline	Fiber Optic to Network
Road Department/Cantonment	1	2 Diesel, 2 Gasoline	Fiber Optic to Network
Road Department/McDavid	1	4 Diesel	Fiber Optic to Network
Sheriff Garage	1	5 Gasoline	Fiber Optic to Network
Sheriff/Big Lagoon	1	2 <u>1</u> Diesel, 1 Gasoline	<del>Cell Phone</del> <u>Advanced LTE</u> <u>cellular Gateway</u>
Solid Waste	1	4 Diesel, 2 Gasoline	Fiber Optic to Network
Transit Facility	<del>3</del> <u>1</u>	2 Diesel, <u>2</u> Gasoline	Fiber Optic to Network

From the solicitation, page 40.

Item	Fuel Control Heads	Name	Fuel Type	Dispenser Type	Auto Tank Gauge
Bulk Tank	1	Transit Facility	Gasoline	2 ea Gilbarco Single	VR TLS-350
Bulk Tank		Transit Facility	Diesel	2 ea Gilbarco Single	VR TLS-350
Bulk Tank	1	Road Dept., Cantonment	Diesel	2 ea Gilbarco Single	VR TLS-350
Bulk Tank		Road Dept., Cantonment	Gasoline	2 ea Gilbarco Single	VR TLS-350
Bulk Tank*	1	Sheriff Garage	Gasoline	2 ea Gilbarco Dual, 1ea Gilbarco Single	None
Bulk Tank*	1	Road Dept., McDavid	Diesel	2 ea Gilbarco Dual	None
Bulk Tank*	1	Century Facility	Gasoline	2 ea Gilbarco Single	None
Bulk Tank*	1	Solid Waste, Perdido Landfill	Diesel	2 ea Tokheim Dual	None
Bulk Tank*		Solid Waste, Perdido Landfill	Gasoline	1 ea Tokheim Dual	None
Bulk Tank	1	Fleet Maintenance	Diesel	4 ea Gilbarco Dual	VR TLS-350
Bulk Tank		Fleet Maintenance	Gasoline		VR TLS-350
Bulk Tank*	1	Sheriff, Big Lagoon	Diesel	2 ea Gilbarco Single	None
Bulk Tank*		Sheriff, Big Lagoon	Gasoline		None
Bulk Tank	1	Public Safety	Diesel	1 ea Tokheim Single	VR TLS-350
Bulk Tank		Public Safety	Gasoline	1 ea Tokheim Single	VR TLS-350

2. Question – What type of file format can Lucy provide and accept for import/export purposes?

Response – Lucy can accept flat files (ASCII) such as a CSV. However, an ODBC, SQL Server Native, or similar connection, to one or more tables or views that be used instead of file import/export is preferred. The County expects to work with selected vendor to make necessary adjustments for proper function of the interface with Lucy. Lucy exports through a report module in ODBC, Excel, Word (editable), RTF, Adobe Acrobat, Crystal Reports and CSV.

3. Question – What type of file format is required for the Clerk of Court's Pentamantion software?

Response – Pentamantion accepts flat files such as a CSV or txt. Please see Section O for an example format.

4. Question – Is this project budgeted and funded in the 2016 year?

Response – Project to be budgeted and funded January 2017

5. Question – What Accounting software are you using for section O. accounting export file? What kinds of file formats can this software accept for import?

Response – The export file is created by a County created middleware which the county desires to sunset upon completion of the Statement of Work. The Accounting export file example, in Section O, is an example of the type of data and format that is required by the accounting system, Pentamation. Also, please see response to question #3 above.

6. Question – Section P- Sample Invoice- is this sample invoice from your accounting system? What does this represent in regards to what is needed in the RFP?

Response – No, the Sample Invoice file is created by a County created middleware which the county desires to sunset upon completion of the Statement of Work. The invoice sample is for content only. The delivered invoice needs to contain the same information, but the format may vary. Please see bottom of page 31 in the Solicitation regarding the invoice.

7. Question – For the 500 small engine devices, Can you provide an overview of how you are fueling these today?

Response – The small engine fleet consists of both mixed (2 cycle) fuel and unleaded. The smaller units in the field are fueled using containers that are filled at our fuel islands using a “miscellaneous” key-- the larger units may be filled from our fuel trucks.

8. Question – #17- When referencing dipping and reconciliation, please elaborate on what this means to the County.

Response – Our fuel tanks are checked manually/electronically (dipped) periodically for fuel levels. Is there a method to correct (reconcile) any discrepancies (gains or losses) between actual fuel levels and those reported in the system?

9. Question – #29- Could you elaborate on how the County transfers fuel as briefly described in this question? What scenarios would entail fuel transfer in these methods?

Response – We currently have five tanker trucks that pump fuel from the underground tanks into their respective tanks—a transfer from one tank to another. The tanker trucks then “issue” the fuel into assets in the field. However, the tanker trucks also transfer fuel into other auxiliary tanks as well. We are interested in how the system accounts for these tank transfers.

10. Question – Please clarify wireless versus fiber optic? Is fiber to the fuel island the only option or is wireless Ethernet an option we can also pursue?

Response – See **Clarification of network requirements in response to questions posed during site visits** below.

11. Question – Is the equipment required to be made in the USA?

Response – Yes

12. Question – Would Escambia County confirm the number of vehicles to be equipped with RFID/Tag components and the number of vehicles to be identified using vehicle keys?

Response – the County is interested in placing RFID's on approximately 700 vehicles(considered as an option) the total # of vehicles approximates 1400, which should be considered as keyed units if the RFID option is not exercised.

13. Question – Would Escambia County confirm the number of personnel to be identified using existing proximity cards and the number of proximity cards and type to be proposed?

Response – The total number of employees utilizing the system will be approximately 1600. At present, all have ID cards, but only some have the proximity feature installed. The Sheriff Dept., who will also utilize the system, uses the “swipe” type card. For proposal purposes, let's anticipate 1000 cards.

14. Question – Would Escambia County confirm that the bid bond will not be required, but that a performance bond will be required?

Response – A Bid Bond is not required, but a Performance and Payment Bond will be required of the awarded firm.

15. Question – Would Escambia County provide a diagram reflecting network access (approximate distance between fuel island and nearest network access) at each site where Conduit for Fiber Optic will be required

Response – It will be up to the proposer to determine the route and distances of the conduit that will contain the fiber optic cabling. Find attached diagrams of each location depicting endpoint and existing structures.

16. Question – Would Escambia County provide a diagram reflecting network access (approximate distance between location of existing and proposed location of Veeder-Root systems and nearest network access) at each site

Response – It will be up to the proposer to determine the route and distances of the conduit that will contain the fiber optic cabling. Find attached diagrams of each location depicting endpoint and existing structures.

17. Question – what is the total amount of vehicles in the fleet that will be using the FMS

Response – Approximately 1400

18. Question – What are the total employees that will be using system

Response – Approximately 1600

19. Question – What are the total amount of vehicles requiring RFID

Response – Approximately 700

### **Fiber Optic Locations**

Please find attached from Google Map showing approximate locations and sites of fiber optic requirements.

1. Road Dept./Cantonment – needs fiber and picture attached
2. Century Facility – needs fiber and picture attached
3. Road Dept./McDavid – needs fiber and picture attached
4. Solid Waste – needs fiber and picture attached
5. Fleet Maint. 9 mile – Needs Fiber, existing fiber does not run all the way to fuel Island but may be used. It is unknown whether existing run is viable for this purpose.
6. Public Safety – needs fiber and picture attached
7. Transit Facility – To be proposed. County network available in same structure.
8. Sheriffs Garage – needs fiber and picture attached
9. Sheriff/Big Lagoon – No Fiber. Advanced LTE cellular Gateway. County will coordinate/provision cellular service.

### **Correction**

On Section F. 1. Para 5 (bottom of page 31) there is a correction. Currently, it is “An sample invoice is provided in appendix XX.”.

It needs to corrected to read

“A sample invoice is provided in Section P”

**Clarification of network requirements in response to questions posed during site visits:**

- Use of any existing fiber optic runs must be approved by the county. Existing strands must be tested and certified.
- Any communications cabling connecting to the county network that penetrates any building's foundation or exterior wall shall be fiber optic.
- All fiber will be terminated in lockable LIU's on a wall, or fiber shelf in a network rack on either end of the link. If outside, a lockable, weatherproof LIU will be required unless termination is made in a lockable, weatherproof cabinet where all strands may be properly terminated and protected.
- All cabling should be run to a main communications demarcation point in an associated building or where the county has existing network switching resources located. All fiber cabling will have a minimum of six strands. Each of these six strands will be terminated and tested. LC connectors should be used where switching resources are available. County Staff expects to work with vendor to determine proper fiber optic termination type for each installation.
- Direct burial of fiber optic cabling will not be acceptable. Conduit shall be used. Pull string in each conduit shall be provided for future use.
- Any penetration of rated walls and structure need to be installed and/or sealed in accordance with applicable building and electrical codes.
- In the Public Safety building, fiber termination for the Escambia county network will be made in room 407. If needed, two, three inch conduits are available in tower building. One conduit is being used by existing fiber cable that terminates in room 407. Actual conduit endpoints are unknown. Pull strings are available in both conduits. If Conduit in tower is used, a minimum of 12 strand fiber will be run between the tower building and the termination point in the public safety building.
- As Veeder-Root systems will be part of the fuel system. The same communications installation requirements as the fuel islands apply.

This Addendum Number 1 is furnished to all known prospective Proposers. Please sign and return one copy of this Addendum, with original signature, with your proposal as an acknowledgement of your having received same. You may photo copy for your record.

Sincerely,



Paul Nobles, CPPO, CPPB, FCCM, FCN  
Senior Purchasing Coordinator

SIGNED: \_\_\_\_\_

COMPANY: \_\_\_\_\_

PRN



601 Highway 297A, Cantonment, FL 32533

Anticipated Network  
Connection

Veeder-Root

Fuel Island





Fuel Island

Anticipated Network  
Connection

Century Volunteer  
Fire Department

er Rd

Tedder Rd

Tedder Rd

Tedder Rd

10 Tedder Road, Century, FL 32535



4901 Camp Road, McDavid, FL 32535

County Network  
Connection

Existing Pump  
controller

Fuel Pump

Camp Rd

Camp Rd

Camp Rd

Camp Rd

Camp Rd

Camp Rd



13009 Beulah Road, Cantonment, FL 32533

Fuel Island

Anticipated Network Connection





1651 East Nine Mile Road, Pensacola, FL 32514

Escambia County  
Parks Department

County Network  
Connection

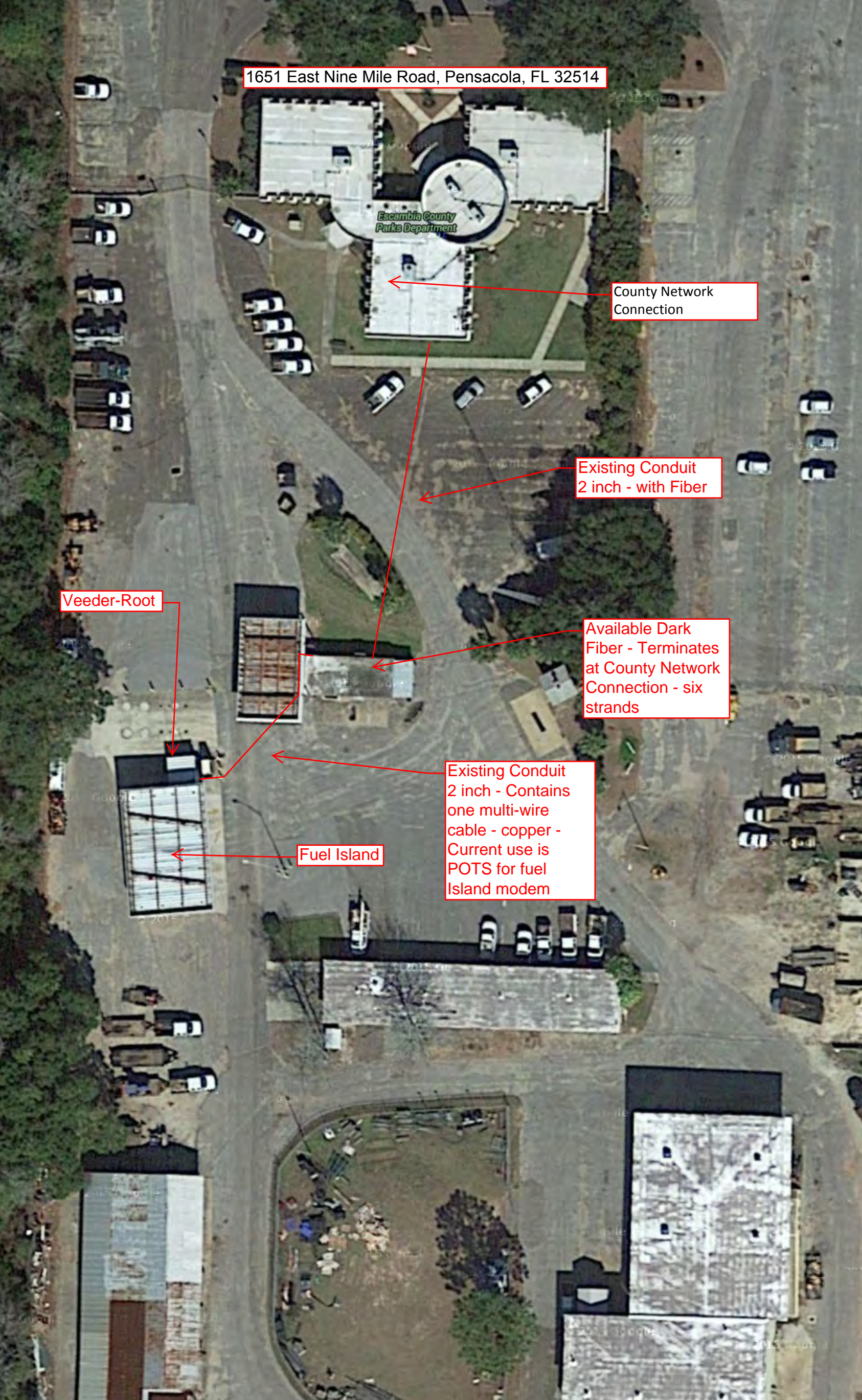
Existing Conduit  
2 inch - with Fiber

Veeder-Root

Available Dark  
Fiber - Terminates  
at County Network  
Connection - six  
strands

Existing Conduit  
2 inch - Contains  
one multi-wire  
cable - copper -  
Current use is  
POTS for fuel  
Island modem

Fuel Island





6575 North "W" Street, Pensacola, FL 32505

Fuel Island

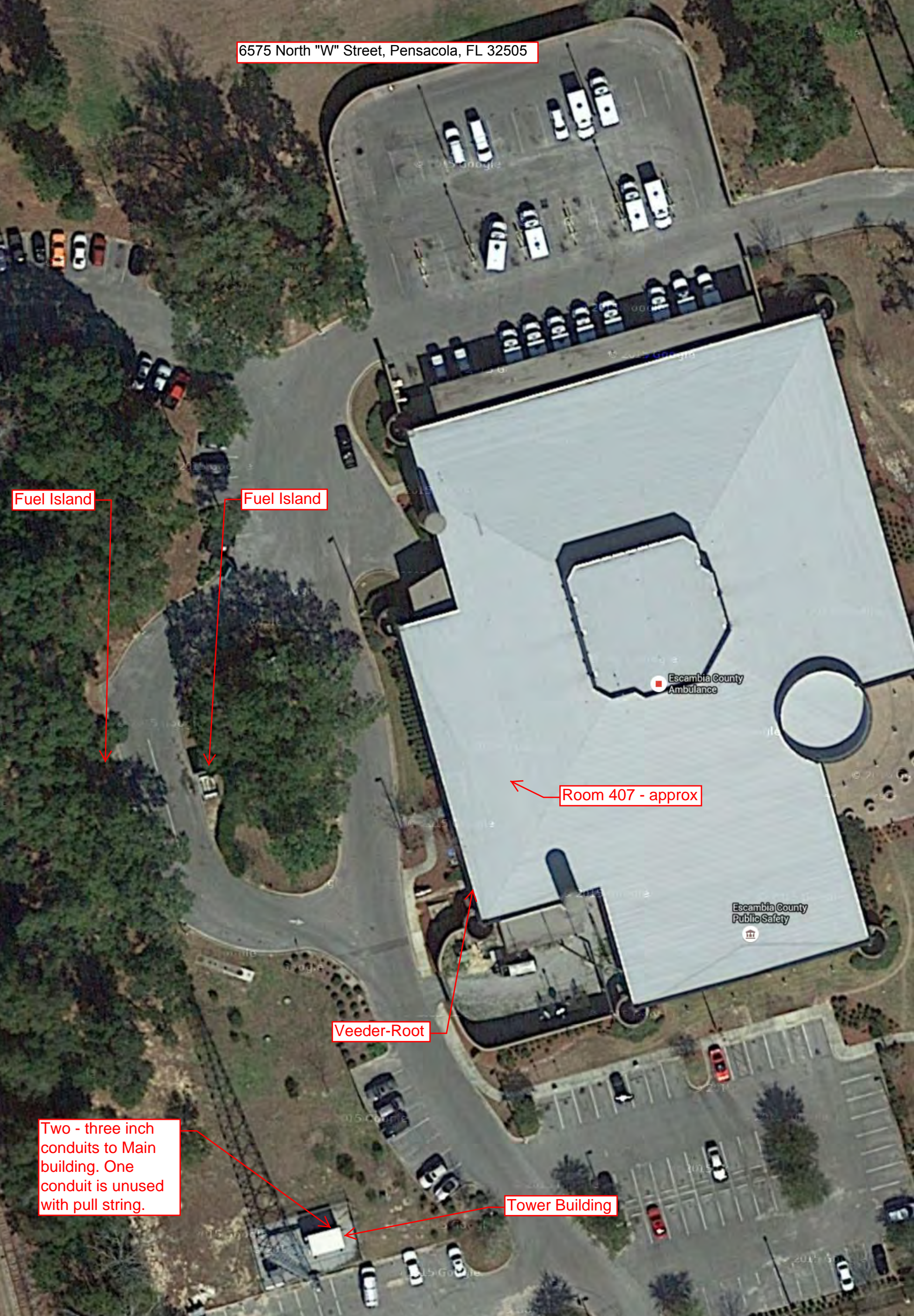
Fuel Island

Room 407 - approx

Veeder-Root

Two - three inch conduits to Main building. One conduit is unused with pull string.

Tower Building







1515 West Fairfield Drive, Pensacola, FL 32501

Fuel Island

Veeder-Root

County Network  
Connection

Fuel Island



Fuel Island

Anticipated Network  
Connection

1700 West Leonard Street, Pensacola, FL 32501





Anticipated  
Advanced LTE Cellular  
Gateway

Fuel Island

12950 Gulf Beach Highway, Pensacola, FL 32507