

Carpenter Creek Bacteria Pollution Control Plan (BPCP)

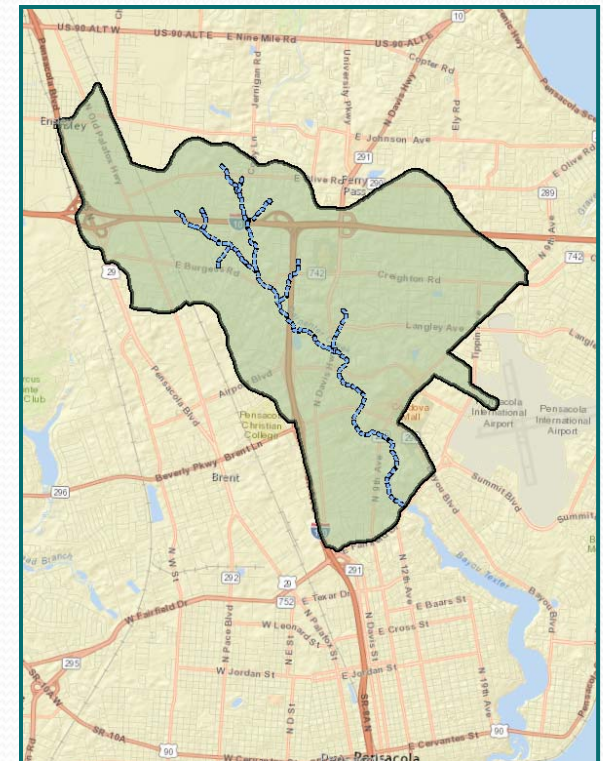
Maps on the Table Planning Meeting

Wednesday, August 30, 2017

1:00 – 3:00pm

Escambia County Central Office Complex – Room 104

3363 West Park Place, Pensacola, FL 32505



Maps on the Table (MOT)

Meeting Agenda

- Welcome & Introductions
- Carpenter Creek BPCP Update
 - Where we are in the process
 - Recent bacteria data
 - How MOT will work
- Break out into Maps Tables
- Brief report from tables
- Next Steps
 - Website and survey
 - Walk the WBID proposed date

Carpenter Creek BPCP

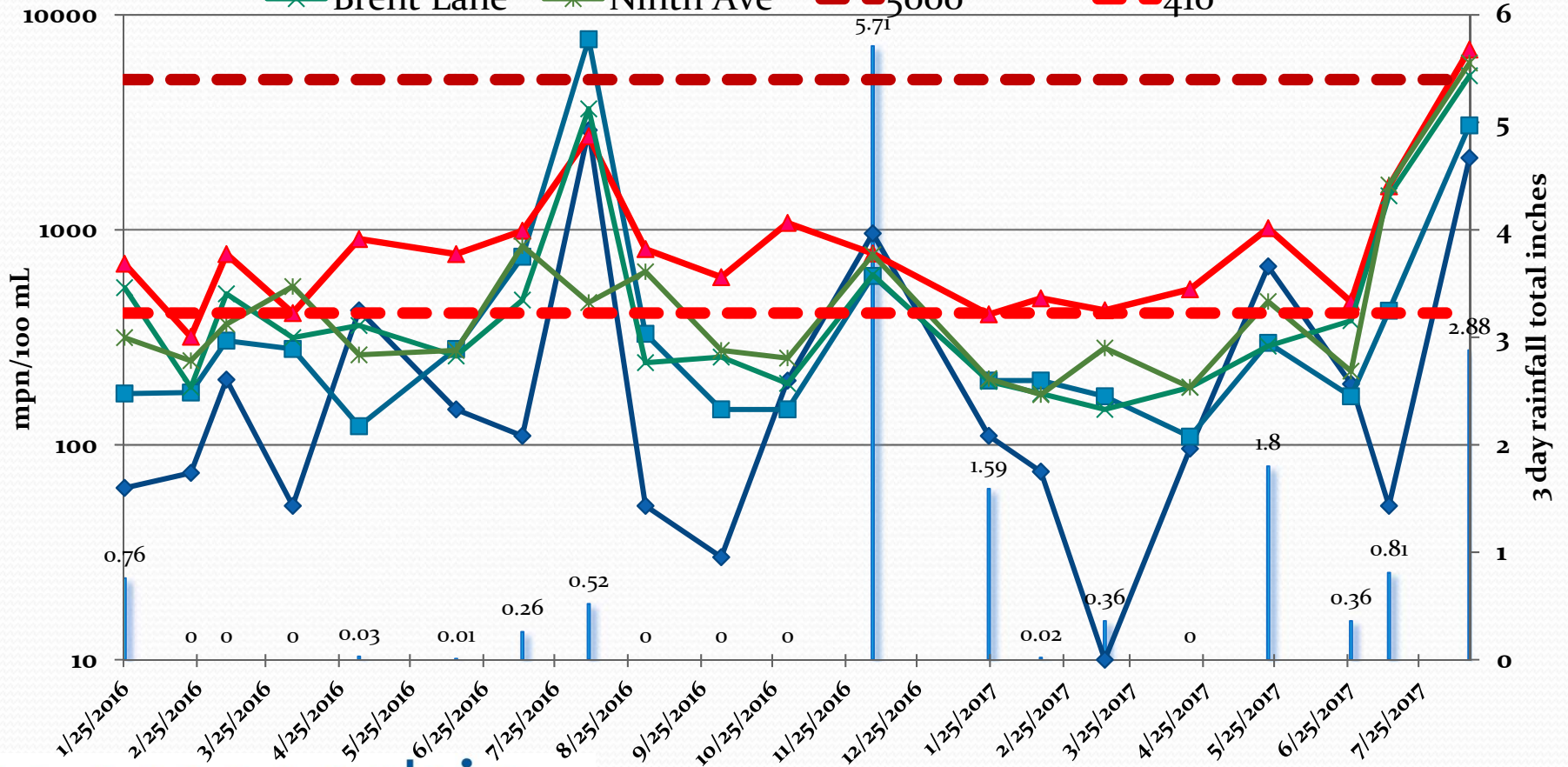
Executive Summary (excerpt)

With the cooperation of FDEP and area stakeholders the BPCP will:

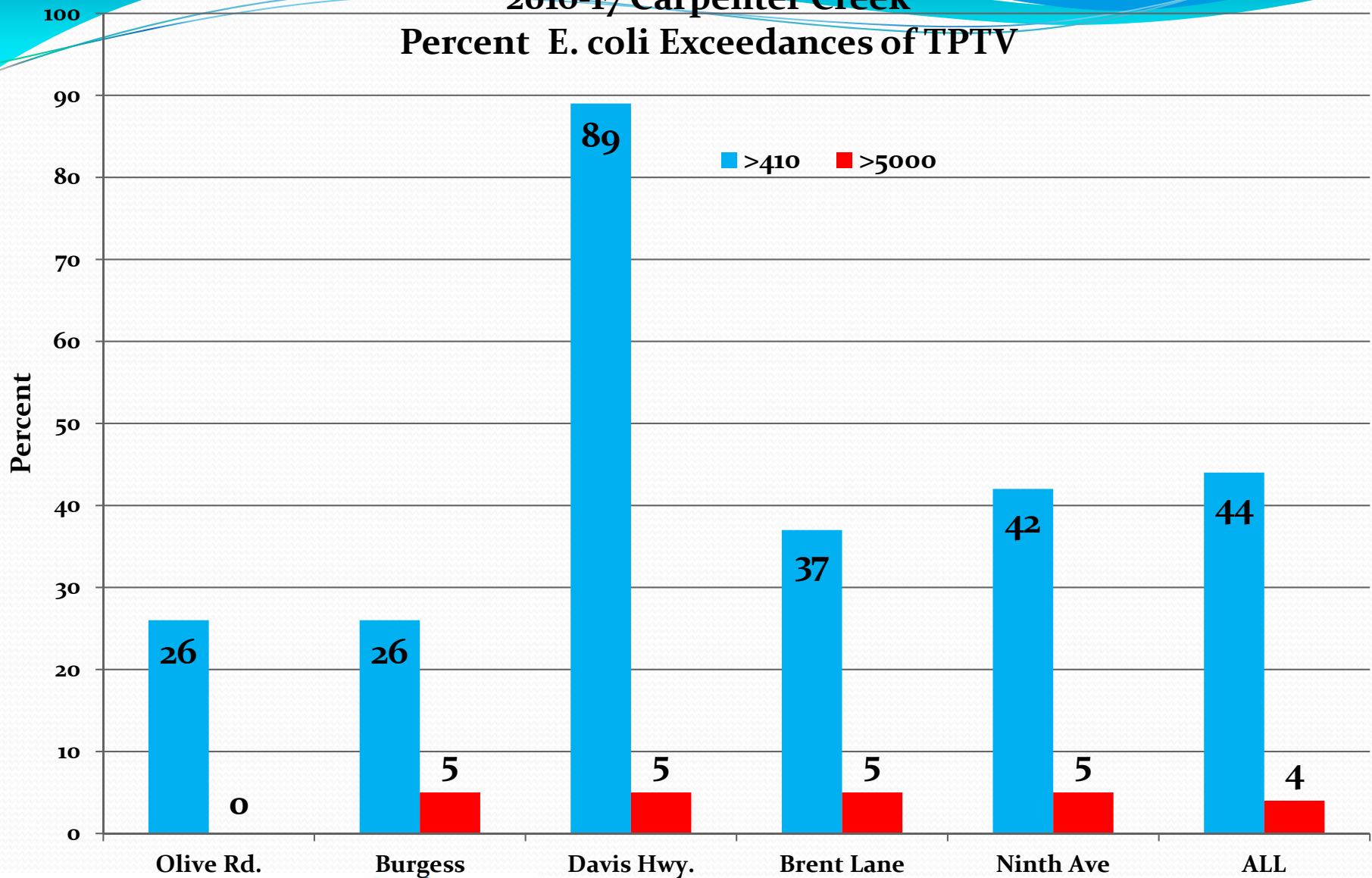
- Establish a water quality monitoring program for Carpenter Creek. ✓
- Employ microbial source tracking (MST) tools.
 - *FDEP assistance this summer*
- Assess the watershed using a “Walk the WBID” field assessment approach.

Carpenter Creek E. coli 2016-17

■ 3D Rain
 ◆ Olive Rd.
 ■ Burgess
 ▲ Davis Hwy.
✕ Brent Lane
✱ Ninth Ave
- - - 5000
- - - 410

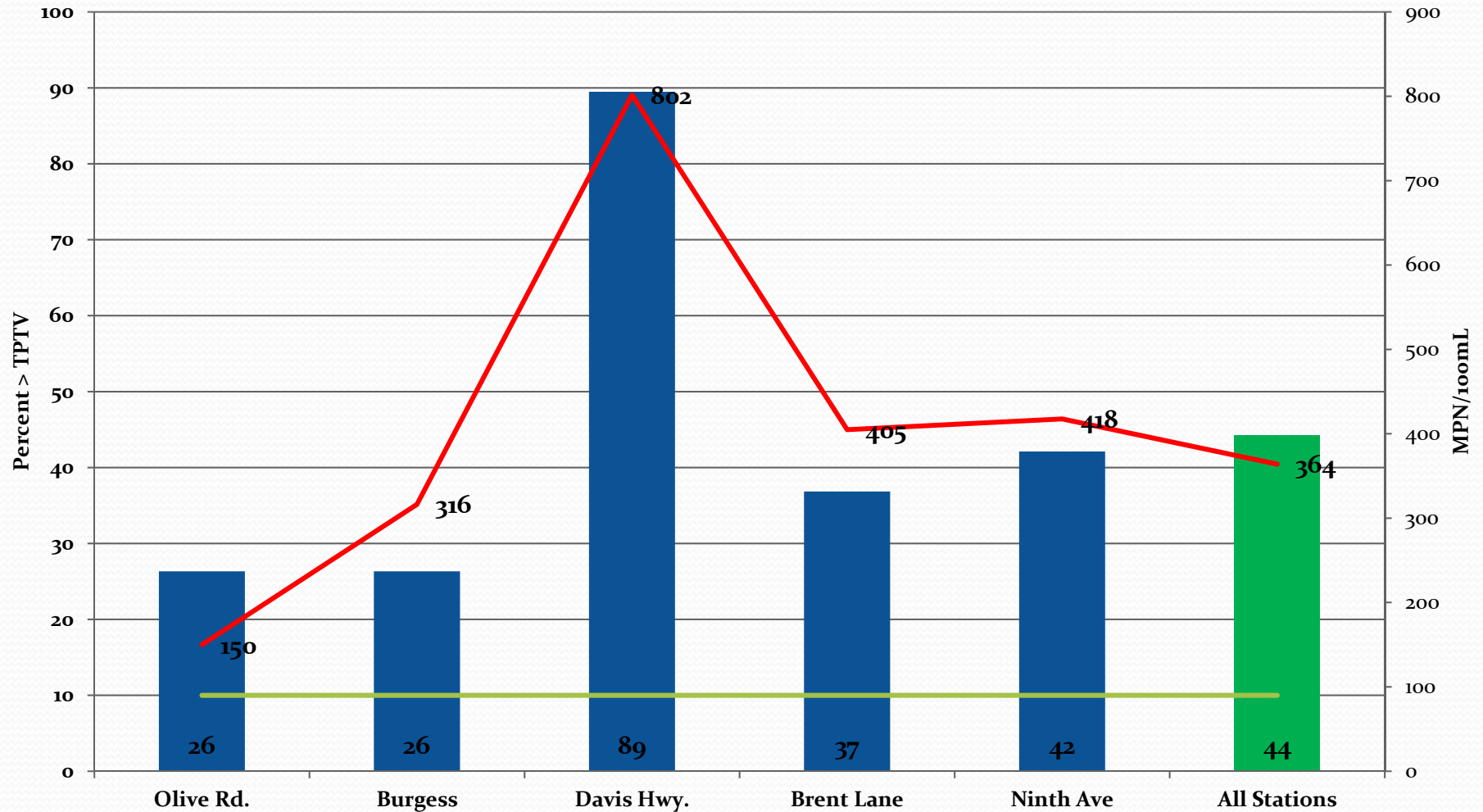


2016-17 Carpenter Creek Percent E. coli Exceedances of TPTV



Percent Exceedances of TPTV and Geometric Means 2016 - August 2017

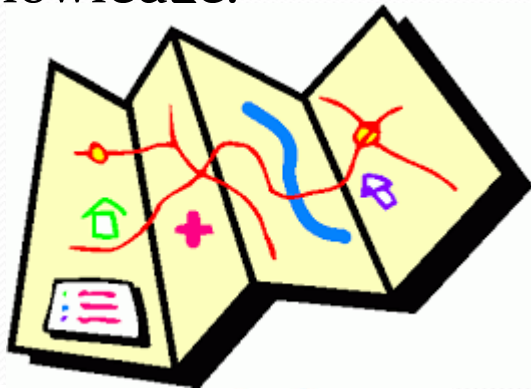
■ Percent >TPTV — GOAL — Geomean



Carpenter Creek BPCP

Today.....

- Maps on the Table Meeting...
 - Stakeholders that collect water quality data.
 - Entities with asset responsibilities (sanitary or storm sewer).
 - Regulatory agencies.
 - Environmental advocacy organizations.
 - Concerned property owners & citizens with first hand knowledge.



my escambia



Carpenter Creek BPCP

TODAY.....

- Maps on the Table Meeting.
 - Preparation for Walk the WBID.
 - Review all bacteria data.
 - Identify potential sources.
 - Mark up large scale maps.

Large Map



Carpenter Creek BPCP

NEXT STEPS.....

- Walk the WBID.....
 - Field Reconnaissance to gain better understanding of the watershed.
 - Hydrology
 - Infrastructure
 - Potential problems
 - When problems identified assign action to appropriate agency.
 - Track problem resolution.
 - Collect samples as warranted

Private Sewage Lift-Station



Carpenter Creek BPCP

NEXT STEPS.....

- Walk the WBID.....Who?
 - Asset managers with field personnel.



Carpenter Creek BPCP

NEXT STEPS.....

- Walk the WBID.....
 - Sampling personnel.



Carpenter Creek BPCP

NEXT STEPS.....

- Walk the WBID.....
 - Regulatory inspectors



Carpenter Creek BPCP

NEXT STEPS.....

- Walk the WBID.....
 - Citizens with specific knowledge.



Carpenter Creek BPCP

NEXT STEPS.....

4. County website for BPCP.
5. Walk the WBID
6. E-mail project list template..
7. Continue monitoring.



Carpenter Creek BPCP

Thank You!!

We look forward to working with you.....

For more information or answers to questions

Please contact Dana Morton:

595-1865

dmorton@myescambia.com

my escambia

