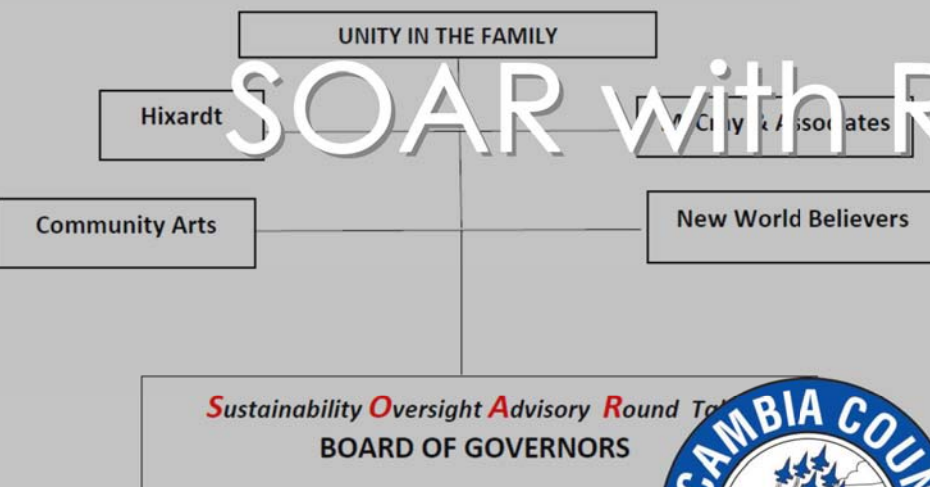


# SOAR with RESTORE



## OVERALL PROJECT DESCRIPTION

SOAR with RESTORE is a workforce development project which will stand up a workforce development program managed by Escambia County. The program will provide training to underserved communities such as Community Redevelopment Areas (CRAs) and minority communities. The program will focus on three main workforce development areas, including environmental hazard remediation, cybersecurity, and re-entry training for developing financial/social skills. These programs and skills were identified by a group of non-profit and for-profit organizations as well as Florida's Great Northwest as valuable skill sets to introduce underserved or re-entry individuals into the workforce. Escambia County will manage the program and work with partner community organization, to provide workforce training courses. The program will work with existing workforce development programs to fill training gaps and avoid program redundancy.

## PROJECT DETAILS

**2016-17 MYIP ACTIVITIES - \$900,000**  
*Program Establishment and Implementation for 2 Years*

- Workforce Training
- Heritage Tourism
- Program Monitoring
- Outreach

**Primary Eligible Activity: Workforce Development and job creation.**

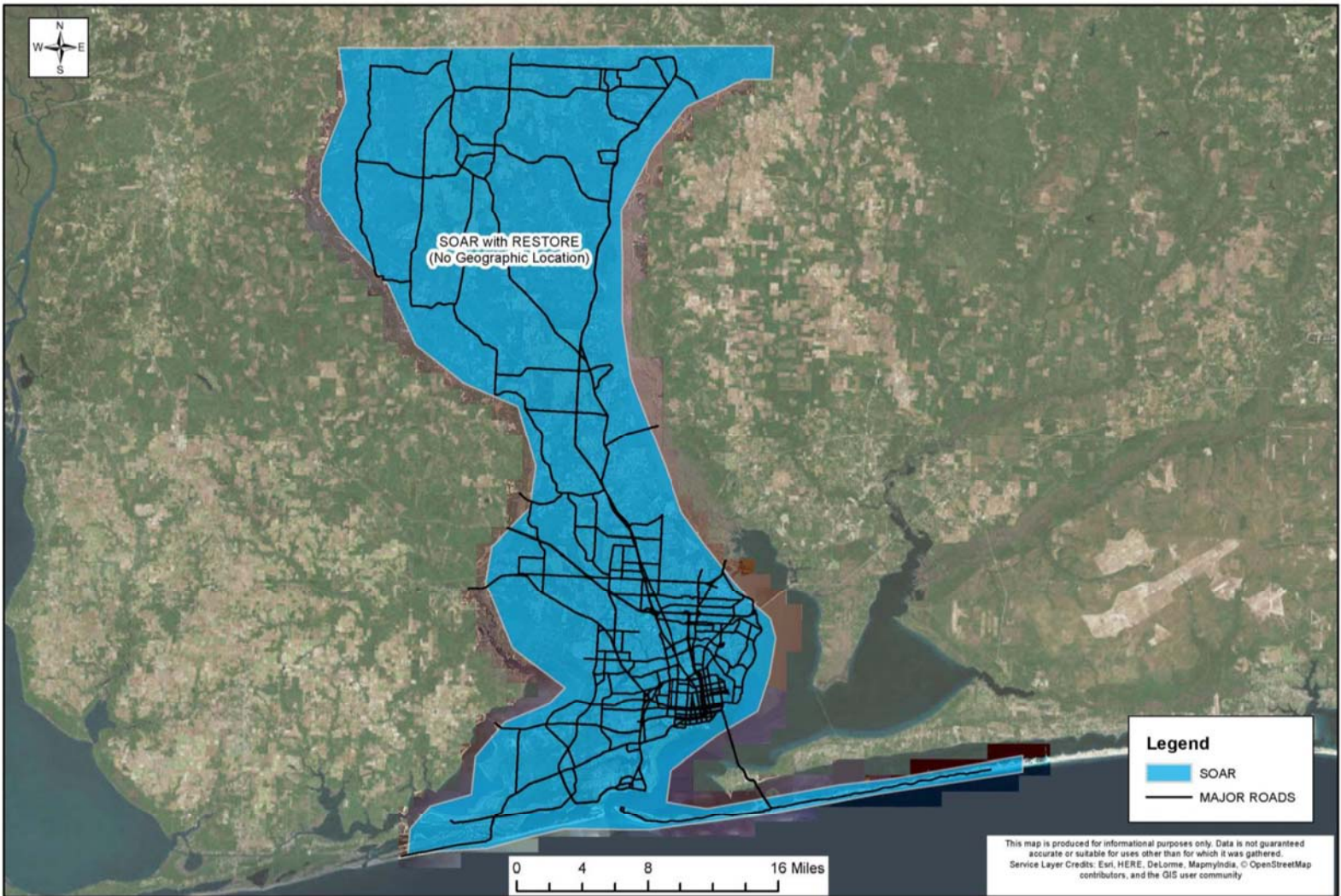
**\*FUTURE ACTIVITIES - \$2,020,000**  
*Program Implementation Continued*

- Workforce Training
- Financial & Social Skills Training
- Heritage Tourism Marker Construction

Total Project Cost: \$2,920,000  
 Leverage: \$1,499,120 (\$600,000-Unity in the Family Ministry, \$399,120-New World Cleaning, \$500,000-Hixardt Technologies)

*\*Future activities are not funded by the 2016-17 MYIP but could be funded in future multi-year plans*

"SOAR WITH RESTORE"



**Overall Project Benefits:**

- Workforce Development
- 25/yr Environmental Worker Training
- 25/yr At-Risk Re-entry Participants Trained in Finance & Social Skills
- 25/yr Educated in Cybersecurity
- Increase Organized Efforts to Expand and Enhance Program
- Involve Multiple Community Organizations

**Best Available Science:**

Addresses Need for Workforce Training Programs  
(See Reference Page)