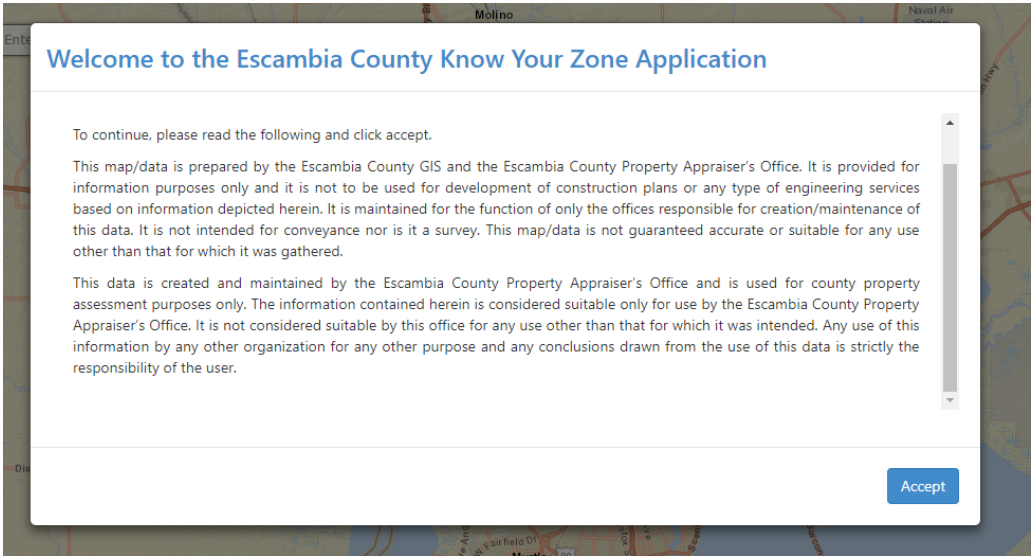
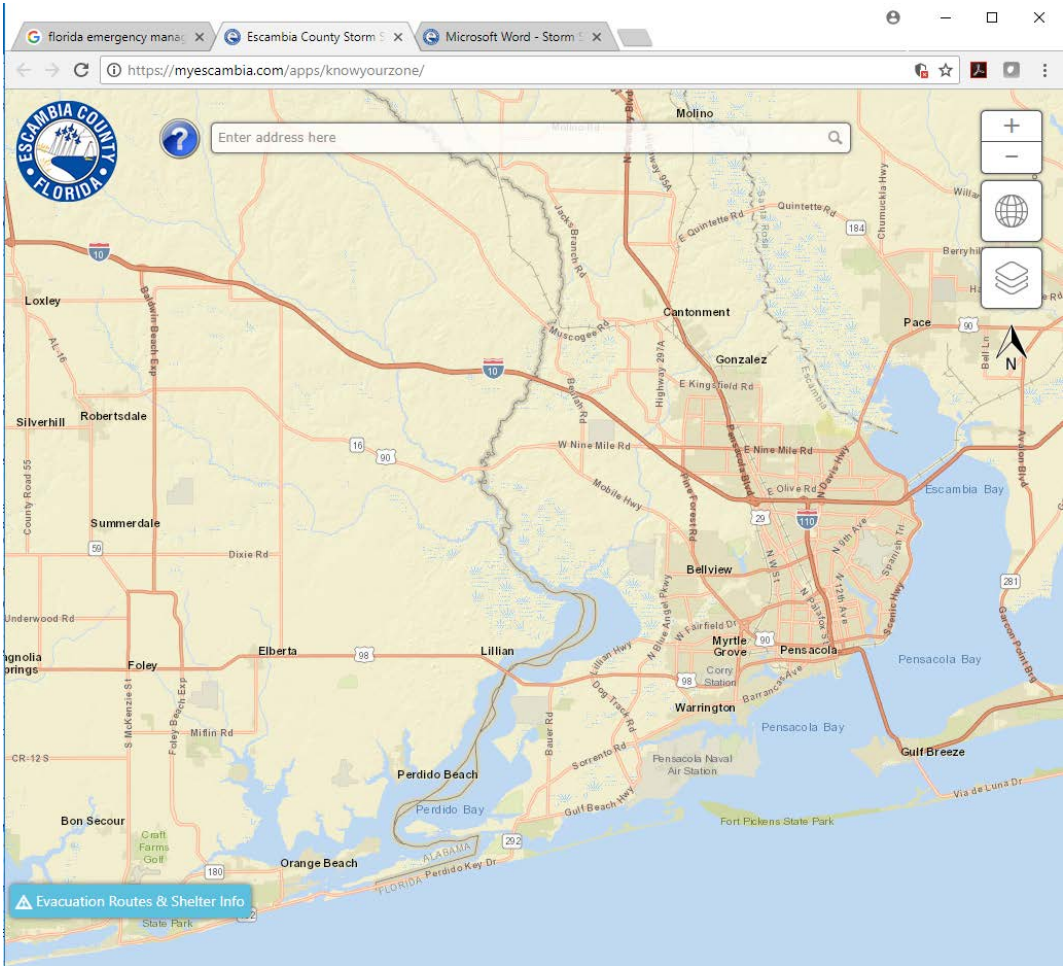


Know Your Zone Application

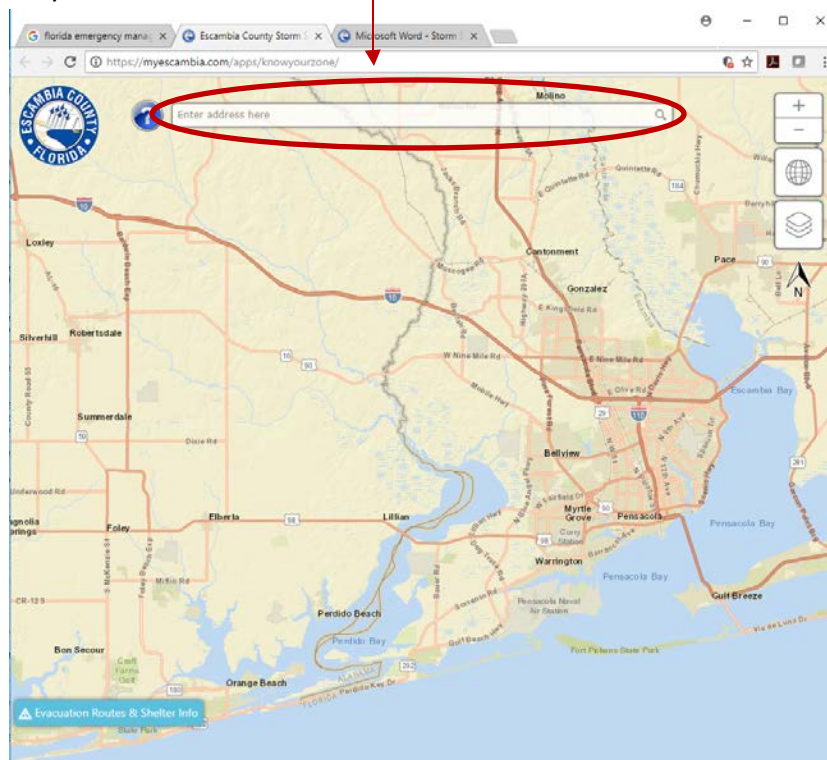
1. Click on the link: <https://myescambia.com/knowyourzone>



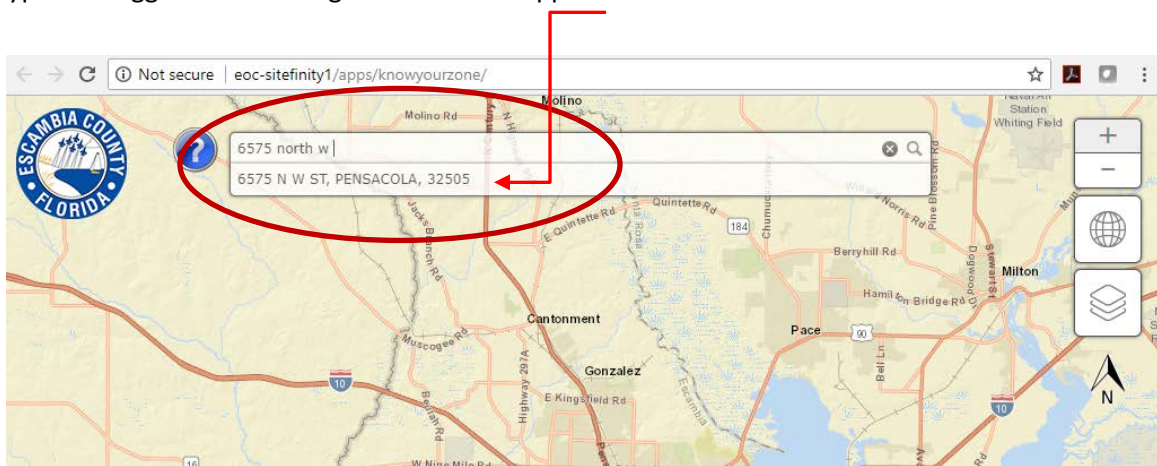
- 2. Accept the Disclaimer
- 3. The application will open as shown below



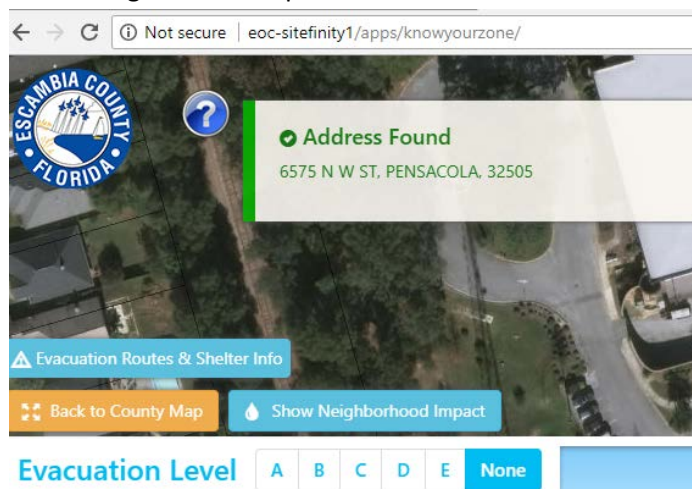
4. Enter an Escambia County address in the search box



5. As you type the suggested matching addresses will appear



6. Select the address you were searching for. The map will zoom to that location.



7. The parcel searched for will indicated by a red dot

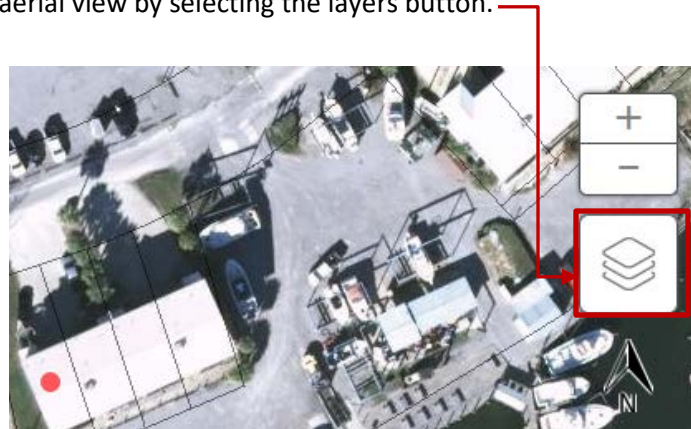
The screenshot shows a web application interface for Escambia County, Florida. At the top left, there is a logo for Escambia County, Florida. Below it, there is a search bar and a 'Show Neighborhood Impact' button. A red box highlights the 'Show Neighborhood Impact' button, with an arrow labeled 'C' pointing to it. Below the search bar, there is a panel titled 'Evacuation Level' with buttons for 'A', 'B', 'C', 'D', 'E', and 'None'. The 'B' button is selected. Below this panel, there is a section titled 'Surge Depth of 3 Feet' and a 3D rendering of a house partially submerged in water. A red box highlights the 'Evacuation Level' panel, with an arrow labeled 'A' pointing to it. Another red box highlights the 3D rendering, with an arrow labeled 'B' pointing to it. A red dot on the map indicates the searched parcel, with an arrow labeled 'C' pointing to it.

8. The results are shown in 3 panels (A, B, C)

- a. The parcel evacuation level and amount of surge in feet, above ground level will be indicated.
 - i. This parcel is at the minimum Evacuation level of an 'B' but it is vulnerable for to all the other evacuation levels and thus higher surge depths.
 - ii. To see this vulnerability, select the evacuation level buttons of **C, D, or E**.
 - iii. Further information on the effects of storm surge are displayed.
- b. Users can also zoom in and pan around the building image by mousing over building image.
 - i. The application building type code and property use code will not always match 100%. The building image is meant to be representative to show scale and water depth for each property
 - ii. Users can pan around to see the Surge effects.
- c. Neighborhood Impact can be seen by clicking on the '**Show Neighborhood Impact**' button.
 - i. Users can toggle between the Neighborhood Impact and the Parcel impacts by clicking the Hide Neighborhood Impact button.

9. To start another address search users can select '**Back to County Map**'.

10. Users can turn on/off the aerial view by selecting the layers button.





11. Users can zoom in or out of the neighborhood view by using the plus/minus buttons

